

 **Combimate**
GUARANTEED LIMESCALE PREVENTION
SIL20
Combiphos
Refill Pack



Combimate SIL20 Combiphos Refill Pack Installation Guide

[Home](#) » [Combimate](#) » Combimate SIL20 Combiphos Refill Pack Installation Guide 

Contents

- [1 Combimate SIL20 Combiphos Refill Pack](#)
- [2 Product Usage Instructions](#)
- [3 Installation](#)
- [4 FAQs](#)
- [5 Documents / Resources](#)
 - [5.1 References](#)



Combimate
GUARANTEED LIMESCALE PREVENTION

Combimate SIL20 Combiphos Refill Pack



Specifications

- For use with Combimate limescale prevention device
- Single appliance protection: Place 400g of Combiphos on the tray
- Complete system protection: Fill dome with 800g of Combiphos after removing the Divider Tray

Product Usage Instructions

Removing the Cover

Depress the two red buttons and pull the cover away from the unit. Water flow through the unit is shut off when the cover is removed.

Refilling Process

1. Place a bowl under the unit to catch any residue.
2. Unscrew the red filler plug using the provided spanner.
3. Unscrew and remove the aluminum ring.
4. Remove the dome from the base, empty exhausted Combiphos, and clean the base.
5. Fit a new 'O' ring seal, refit the dome and aluminum ring.
6. Refill with new Combiphos through the hole in the dome.
7. Refit the red filler plug and replace the front cover. Hang the spanner on the hook.

Contact Information: 0118 969 1611 | sales@combimate.co.uk | www.combimate.co.uk

From CRL/1 A-02

FOR USE WITH COMBIMATE LIMESCALE PREVENTION DEVICE

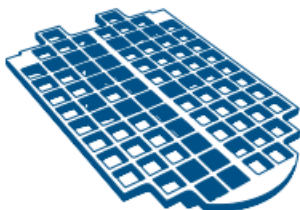
Your Combimate can be used to offer two different levels of protection, complete system protection or single appliance protection. Inside the dome is a removable Divider Tray which allows you to select the quantity of Combiphos that the Combimate can hold.

Single appliance protection

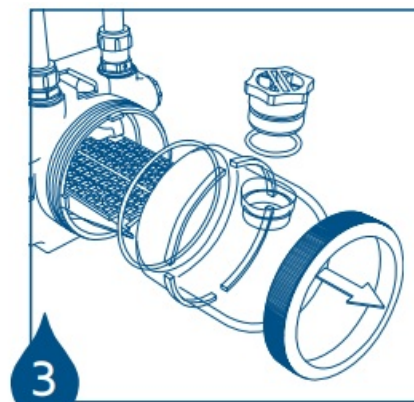
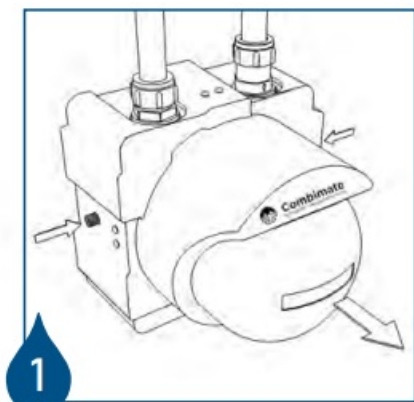
Divider Tray to remain in place (place 400g of Combiphos on to tray)

Complete system protection

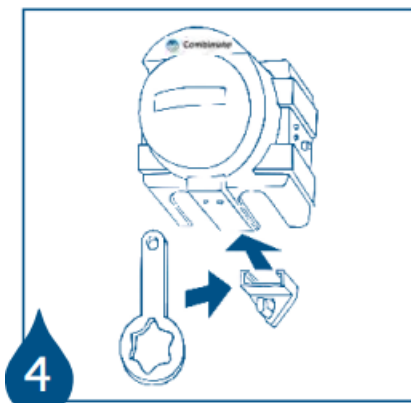
Divider Tray must be removed (fill dome with 800g of Combiphos)



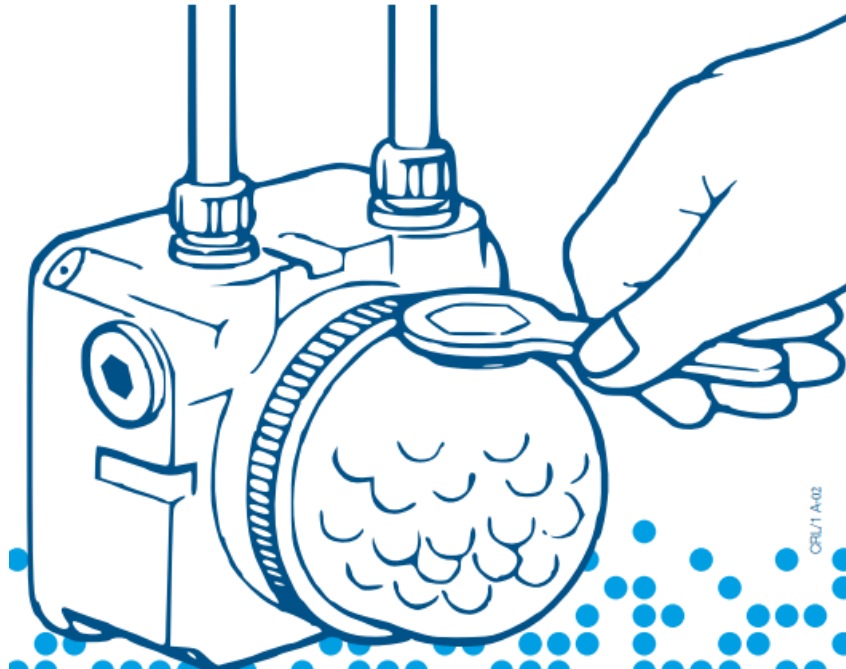
Installation



1. Depress the two red buttons and pull the cover away from the unit (Water flow through the unit is shut off when the cover is removed).
2. Place a bowl under unit to catch any residue. Unscrew red filler plug using the spanner provided. Unscrew and remove aluminium ring.
3. Remove dome from base, empty exhausted Combiphos and clean base. Fit new 'O' ring seal, refit dome and aluminium ring. Refill with new Combiphos through hole in dome.



4. Refit red filler plug and replace front cover. Hang spanner on hook.



0118 969 1611 | sales@combimate.co.uk | www.combimate.co.uk

FAQs

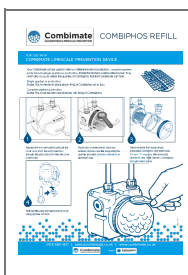
Q: How often should I refill the Combiphos?

A: The frequency of refilling depends on your water hardness and usage. Generally, it is recommended to check and refill every 6-12 months.

Q: Can I use any other substance instead of Combiphos?

A: It is recommended to use only Combiphos as other substances may not provide the same level of protection against limescale buildup.

Documents / Resources



[Combimate SIL20 Combiphos Refill Pack](#) [pdf] Installation Guide
SIL20, SIL20 Combiphos Refill Pack, SIL20, Combiphos Refill Pack, Refill Pack, Pack

References

- [User Manual](#)

[Manuals+](#), [Privacy Policy](#)

This website is an independent publication and is neither affiliated with nor endorsed by any of the trademark owners. The "Bluetooth®" word mark and logos are registered trademarks owned by Bluetooth SIG, Inc. The "Wi-Fi®" word mark and logos are registered trademarks owned by the Wi-Fi Alliance. Any use of these marks on this website does not imply any affiliation with or endorsement.