



## colorways CW-ACC10BKBL Wireless Mouse and Keyboard Set Instruction Manual

[Home](#) » [colorways](#) » colorways CW-ACC10BKBL Wireless Mouse and Keyboard Set Instruction Manual 



Instruction Manual



CW-ACC10BKBL Wireless Mouse and Keyboard Set

### Contents

- [1 Before You Begin](#)
- [2 Getting Started](#)
- [3 FCC Information](#)
- [4 Warranty Information](#)
- [5 Documents / Resources](#)
- [6 Related Posts](#)

## Before You Begin

### In the Box

- Wireless Keyboard
- Wireless Mouse
- User Manual

### Tech Specs

- Keyboard: 2.4 GHz Wireless
- Dimensions: 14.8 x 5.7 x 1 in (376 x 14.5 x 2.5 cm)
- Mouse: 2.4 GHz Wireless
- Dimensions: 4 x 2.7 x 1.4 in (10.3 x 6.9 x 3.5 cm)

### Battery Requirements

1x AAA battery for keyboard

1x AA battery for mouse

### Caution

To ensure safe and proper use, read all safety information before using the devices. Only use with manufacturer-approved batteries, chargers, accessories, and supplies.

- THIS DEVICE IS NOT ATOY, do NOT allow children or pets to use or play with these devices.
- Do not disassemble, modify, or repair the devices.
- Do not submerge in water.
- Do not expose the units to extreme temperatures (heat or cold), open flames, humid, or wet conditions.
- Do not allow the USB ports, power Jack or other inputs of the devices to be exposed to dust, or water, or come into contact with any conductive materials such as liquids, metallic powders, etc.

## Getting Started

### Keyboard Single Use



Bluetooth channel 1, Pairing Name: CW-ACC10-KY 1



Bluetooth channel 2, Pairing Name: CW-ACC10-KY2



2.4G channel

### Pairing Bluetooth Keyboard

Step 1: Install 1 AAA battery (not included) and hold down the FN + Bluetooth channel 1 button or FN+Bluetooth channel 2 button (for more than 3 seconds) to enter Bluetooth mode. The indicator flashes blue.

Step 2: Open the Bluetooth of the device and search, and the device will search by itself to find the name of the KEYBOARD (Bluetooth name:

CW-ACC10-KY1 or CW-ACC10-KY2), and click Connect.

Step 3: A successful connection will be displayed and the indicator will be off.

#### **Requirements:**

Operating Systems: Windows 8, Windows 10, Android 5.0 or later, iOS13 or later, macOS X 10.10 or later.

Hardware's: Bluetooth 4.0 or later.

Pairing 2.4G Keyboard without Bluetooth

Step 1: Remove the USB receiver from the slot below the keyboard and insert the receiver into an available USB port on your computer.

Step 2: Open the battery compartment and insert 1 AAA battery (not included). Once the LED indicator flashes, the keyboard enters standby-mode.

Step 3: Press the FN + 2.4G key for 2 seconds to enter the 2.4G mode, After a successful connection, the power indicator will blink before turning off.

#### **Using Mouse Only (via Bluetooth)**

Step 1: Install 1 AA battery, then push the on/off button on the bottom of the mouse. Once the LED indicator flashes blue, the mouse is ready for pairing in Bluetooth mode,

Step 2: Turn on the Bluetooth of the device and search, and the device finds the mouse name by itself (Bluetooth name: CW-ACC10-Mouse).

Step 3: A successful connection will be displayed on your device.

#### **Requirements:**

Operating Systems: Windows XP Windows7, Windows8, Windows10 and later, Android 4.4 and later, iOS13 ,Mac OS X 10.5 or later, Linux Kernel 2.6+2, Chrome OS

Hardware's: USB port, Bluetooth 4.0 or later.

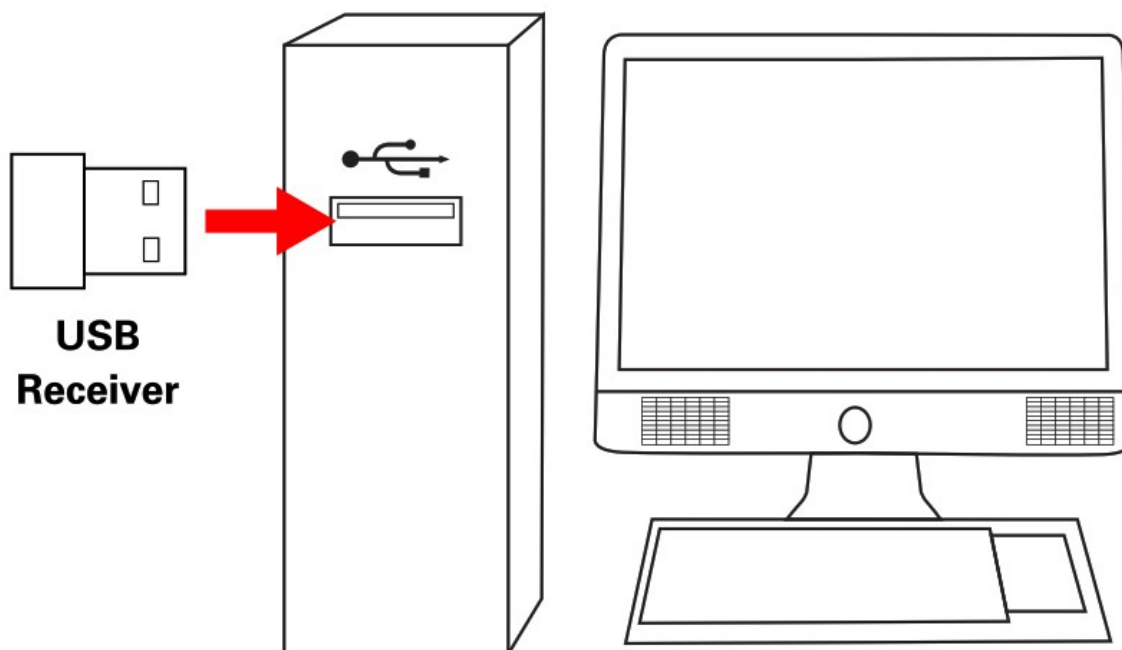
#### **Using Keyboard And Mouse Together**

Step 1: Remove the USB receiver from the slot below the keyboard and insert the receiver into an available USB port on your computer.

Step 2: Turn on the mouse and flash the red light, that is 2.4G mode, If the blue light flashes, press the right button scroll wheel for 3 seconds to switch to 2.4G mode,

Note: The flash red light is 2.4G mode, and the flash blue light is Bluetooth mode.

Step 3: Press FN+2.4G button for 2 seconds to enter 2.4G channel. The wireless keyboard and mouse are now ready to use.



#### **NOTE:**

- If you lose connection between the USB receiver and your wireless mouse or keyboard: Remove the batteries from the wireless mouse or keyboard, wait one minute, then put the batteries back in the wireless mouse or keyboard.
- If the keyboard and mouse are used together, after both devices are put into the battery to start, the keyboard switching mode can be used 2.4G, but the mouse cannot be used. At this time, you can press the right button+ scroll wheel for 3 seconds.
- If you need to use the 2.4G mouse on its own, power off the keyboard or select the keyboard bluetooth mode.

## FCC Information

### **This device complies with Part 15 of the FCC Rules.**

Caution: Any changes or modifications not expressly approved could void the user's authority to operate the equipment.

NOTE: This equipment has been tested and found to comply with the limits for a Class B digital device, pursuant to part 15 of the FCC Rules. These limits are designed to provide reasonable protection against harmful interference in a residential installation. This equipment generates, uses and can radiate radio frequency energy and, if not installed and used in accordance with the instructions, may cause harmful interference to radio communications. However, there is no guarantee that interference will not occur in a particular installation. If this equipment does cause harmful interference to radio or television reception, which can be determined by turning the equipment off and on, the user is encouraged to try to correct the interference by one or more of the following measures:

- Reorient or relocate the receiving antenna.
- Increase the separation between the equipment and receiver.
- Connect the equipment into an outlet on a circuit different from that to which the receiver is connected.
- Consult the dealer or an experienced radio/TV technician for help.

This device complies with Part 15 of the FCC Rules. Operation is subject to the following two conditions: (1) This device may not cause harmful interference, and (2) this device must accept any interference received, including interference that may cause undesired operation.

### **Radiation Exposure Information**

This device has been evaluated to meet general RF exposure requirements. The device can be used in portable exposure conditions without restriction.

## Warranty Information

### **90-Day Limited Warranty**

Territory: United States

### **LIMITED WARRANTY TO ORIGINAL CONSUMER**

This product as supplied and distributed new by an authorized retailer is warranted by Southern Telecom, Inc. to the original consumer purchaser against defects in materials and workmanship ("Warranty") as follows:

#### **To obtain warranty service:**

Visit our customer support portal: [www.customersupport123.com](http://www.customersupport123.com) and select "Support" © Select the brand, fill out the corresponding form (exchanges require dated proof of purchase from an authorized retailer) then submit your request.

Your product will be repaired or replaced, at our option, for the same or similar model of equal value if examination by the service center determines this product is defective. Products received damaged as a result of shipping will require you to file a claim with the carrier.

Warranty service not provided

This warranty does not cover damage resulting from accident, misuse, abuse, improper installation or operation, lack of reasonable care, unauthorized modification including software modifications such as the installation of custom firmware. This warranty is voided in the event any unauthorized person opens, alters or repairs this product. All products being returned to the authorized service center for repair must be suitably packaged.






NO WARRANTIES, WHETHER EXPRESS OR IMPLIED, INCLUDING, BUT NOT LIMITED TO, ANY IMPLIED WARRANTIES OF MERCHANTABILITY OR FITNESS FOR A PARTICULAR PURPOSE, OTHER THAN THOSE EXPRESSLY DESCRIBED ABOVE SHALL APPLY.

DISTRIBUTOR FURTHER DISCLAIMS ALL WARRANTIES AFTER THE EXPRESS WARRANTY PERIOD STATED ABOVE. NO OTHER EXPRESS WARRANTY OR GUARANTY GIVEN BY ANY PERSON, FIRM OR ENTITY WITH RESPECT TO THE PRODUCT SHALL BE BINDING ON DISTRIBUTOR. REPAIR, REPLACEMENT, OR REFUND OF THE ORIGINAL PURCHASE PRICE – AT DISTRIBUTOR’S SOLE DISCRETION – ARE THE EXCLUSIVE REMEDIES OF THE CONSUMER. IN NO EVENT WILL DISTRIBUTOR OR ITS MANUFACTURERS BE LIABLE FOR ANY INCIDENTAL, DIRECT, TO, DAMAGES FOR LOSS OF PROFITS, BUSINESS, SAVINGS, DATA OR RECORDS) CAUSED BY THE USE, MISUSE OR INABILITY TO USE THE PRODUCT. EXCEPT AS STATED HEREIN, NO OTHER WARRANTIES SHALL APPLY.

NOTWITHSTANDING THE FOREGOING, CONSUMER’S RECOVERY AGAINST DISTRIBUTOR SHALL NOT EXCEED THE PURCHASE PRICE OF THE PRODUCT SOLD BY DISTRIBUTOR. THIS WARRANTY SHALL NOT EXTEND TO ANYONE OTHER THAN THE ORIGINAL CONSUMER WHO PURCHASED THE PRODUCT AND IS NOT TRANSFERABLE.

Some countries, states or provinces do not allow the exclusion or limitation of incidental or consequential damages or allow limitations on warranties, so limitation or exclusions may not apply to you. This warranty gives you specific legal rights, and you may have other rights that vary from state to state or province to province. Contact your authorized retailer to determine if another warranty applies.


## Rating Label Definitions

	Direct current symbol.
	This symbol signifies the product must not be discarded as household waste, and should be delivered to an appropriate collection facility for recycling. Proper disposal and recycling helps protect natural resources, human health and the environment.
	This symbol represents FCC Declaration of Conformity and compliance.
	This symbol signifies and declares that this equipment has battery charging which complies with California CEC and energy efficiency.
	This symbol signifies that this is a wireless device powered by Bluetooth® technology. The Bluetooth® word mark and logos are registered trademarks owned by Bluetooth SIG, Inc. used under license.

All product names, trademarks, and registered trademarks are property of their respective owners. All company, product, and service names used in this document are for identification purposes only. Use of these names, trademarks, and brands does not imply endorsement.

**Printed in China**  
**V1. 01-2023**

## Documents / Resources

	<a href="#">colorways CW-ACC10BKBL Wireless Mouse and Keyboard Set</a> [pdf] Instruction Manual CW-ACC10BKBL, CW-ACC10BKBL Wireless Mouse and Keyboard Set, Wireless Mouse and Keyboard Set, Mouse and Keyboard Set, Keyboard Set
---	---