



Colorlight A2K LED Screen High-Definition Player User Manual

[Home](#) » [Colorlight](#) » Colorlight A2K LED Screen High-Definition Player User Manual 

Contents

- [1 Colorlight A2K LED Screen High-Definition Player User Manual](#)
- [2 Safety Precautions](#)
- [3 Overview](#)
- [4 Appearance](#)
- [5 Detailed Setup Steps](#)
- [6 Description of Program Window Type](#)
- [7 Documents / Resources](#)
- [8 Related Posts](#)



Colorlight A2K LED Screen High-Definition Player User Manual



Safety Precautions

Before use of the equipment, please read all safety precautions to ensure safe and correct use of the product!

- **Do not open the cover**

In order to prevent personal accidents, people rather than the Company's technical personnel may not open the upper cover of the equipment.

- **Please use the power supply and accessories approved by the manufacturer**

The power supply of this product supports DC 5V-12V power input. Please use the power cord attached with the package of this product or use the power cord conforming to the standard.

- **Avoid all functional interfaces from contacting live objects**

This product is an electronic product. If the functional interface contacts a live object, it may cause damage to the circuit components, thus affecting normal use of the product.

- **Keep away from inflammable, explosive and other dangerous goods**

Keep away from inflammables and explosives. Do not use this product in inflammable and explosive environment!

- **This product does not support waterproof design.** Do not directly have it contact liquid or use it in humid environment

Safety Protection Measures

In all installation programs of A2K networking player, please follow the safety rules to avoid personal injury and equipment damage.

Unpacking and Inspection

Before opening the packing box of A2K networking player, please check whether it is damaged. If there is any damage, please inform the carrier in time to confirm the compensation. After unpacking, please confirm again according to the packing list. If any parts are found incomplete, please contact the corresponding sales personnel in time.

Overview

A2K is a new-generation cloud networking player that supports 4K H265/H264 hardware decoding and 1080P HD output. Based on the powerful Colorlight cloud service platform, it provides functions such as device monitoring, program producing, program scheduling, program centralized publishing, and multi-level management.

The A2K player supports 4G, WiFi, wired network and other various networking methods, and can be deployed rapidly to achieve intelligent cloud management function, and multi-screen, multi-business and cross-regional unified management. It also supports using the PlayerMaster software for editing and publishing programs, arbitrarily laying out multiple windows, and playing various materials such as videos, pictures, texts, sheets, weather and clock. It can widely apply to various commercial LCD display fields, such as the screen of chain stores, retail stores and advertisement players.

Features

- High-definition output of 1080P
- Support multi-level management of cloud server and role-based program publishing
- Strong processing performance, supporting H265/H264 4K high-definition video hardware decoding and playback
- Dual band WiFi, with stable connection and fast transmission rates, supporting configuration of WiFi Station or

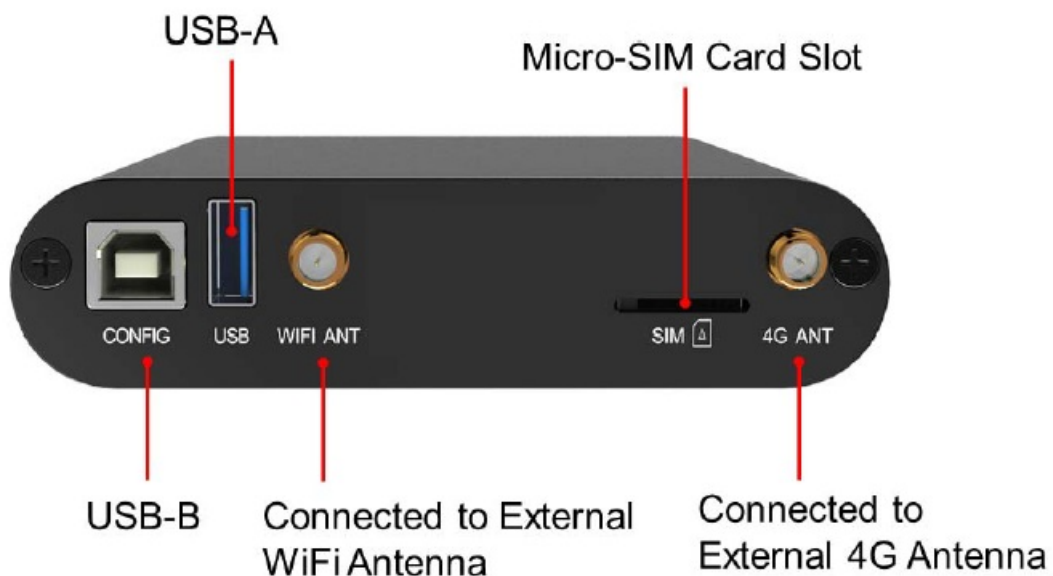
WiFi AP

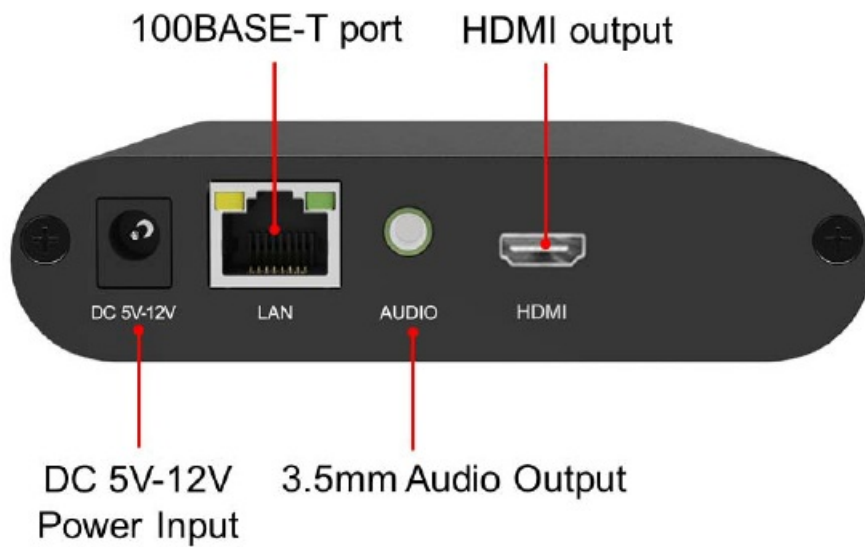
- 8GB storage
- **Multiple playback modes**
 - Support USB drive plug and play, and program update via USB drive
 - Synchronous playback of multiple screens
 - Program and command schedules
- **Window and materials**
 - Support playing multiple program pages (32 pages at most)
 - Rich media materials, such as pictures, videos, texts and clocks, supporting video and picture scaling
 - Support playback and overlay of multiple windows, whose size and location can be freely adjusted
 - Support playing up to two high-definition windows or one 4K video window simultaneously
- **Comprehensive control scheme**

Support control and management from various platforms, such as LED Assistant for smartphones and tablets, and PlayerMaster for PC.
- **Network communication**
 - Dual band and dual mode WiFi, supporting WiFi 2.4G and 5G band, WiFi hotspot mode or WiFi client mode1
 - LAN, supporting DHCP mode and static mode
 - 4G communication, supporting 4G network in various countries (optional)
 - GPS positioning (optional)

The signal stability and quality of WiFi hotspot and WiFi client is related to the transmission distance, wireless network environment and WiFi band.

Appearance





Quick Start Guide

You can learn how to use the A2K player after you master the following three steps:

Step 1: Properly connect the player with the LCD.

Step 2: Configure network parameters.

Step 3: Configure other parameters.

Step 4: Edit and publish programs.

Note

1. Go to the next chapter to learn detailed configuration methods.
2. Download related software from www.colorlightinside.com.

Detailed Setup Steps

Step 1: Properly connect the player with the LCD.



Step 2: Configure network parameters.

Standalone players do not need network configuration. In LAN mode, you can select a network connection method from LAN, WiFi and WiFi hotspot for configuration. In cloud mode, you can select a network connection method from LAN, WiFi and 4G for configuration.

To configure network parameters, do the following

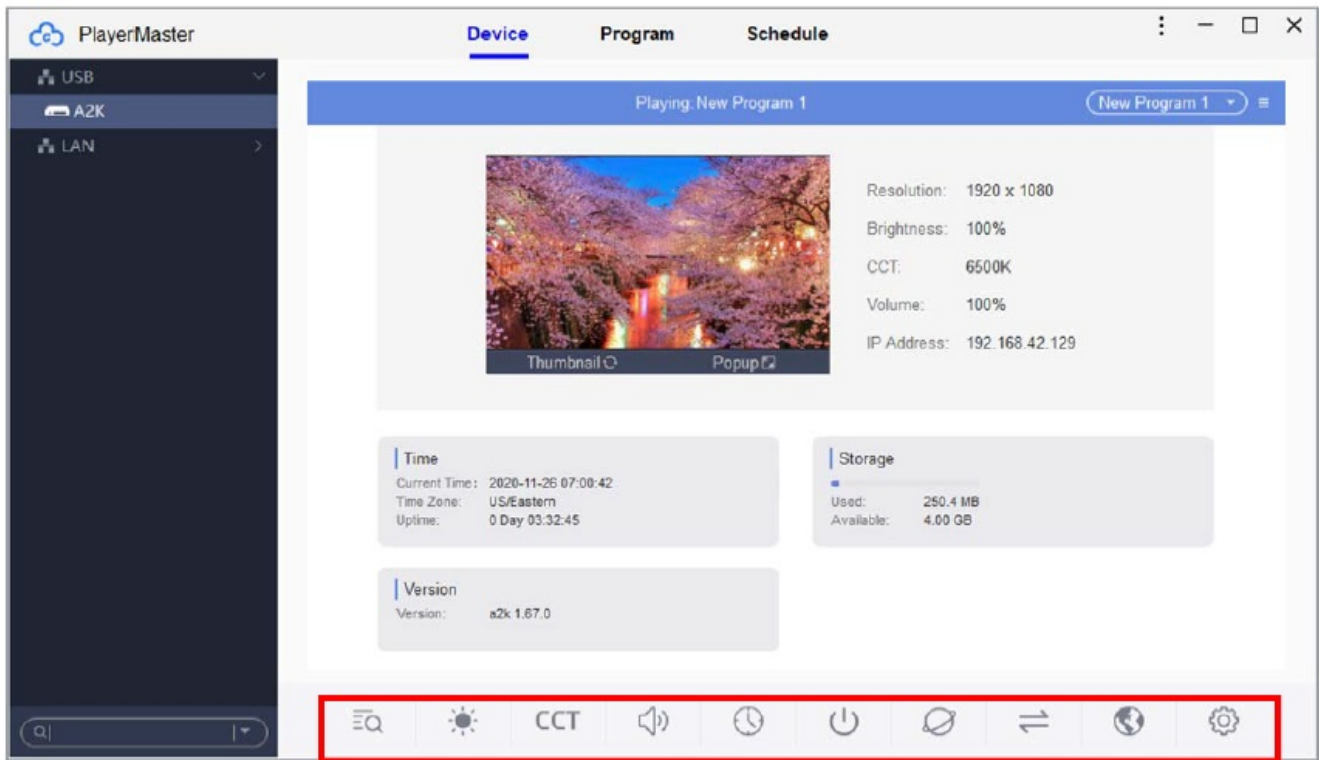
1. Connect the A2K player with the computer via USB cable.
2. Open PlayerMaster, and select the device connected to the USB port.
3. On the Device page, click the network setting icon to enter the following interface (Take LAN as an example, the player will automatically obtain IP address after connecting to Ethernet cable), and then click Apply.

The screenshot shows the 'Net' settings screen. At the top, there's a blue header with a back arrow and the title 'Net'. Below the header, there are four network options: 'WiFi', 'WiFi Hotspot', 'LAN' (which is selected with a blue checkmark), and '4G'. The 'LAN' option is highlighted with a dashed border. Below these options is a large white box containing the LAN configuration settings. Inside this box, there's a tab labeled 'LAN'. The settings include two radio buttons: 'Automatically Obtain IP Address' (selected) and 'Use Following IP Address'. To the right of these radio buttons is a blue button labeled 'Details..'. Below the radio buttons are five input fields: 'IP Address', 'Subnet Mask', 'Gateway', 'Primary DNS', and 'Secondary DNS'. Each of these fields contains the default value '0 . 0 . 0 . 0'. At the bottom of the white box, there are three blue buttons: 'Update', 'Apply', and 'Test Network State'.

After setting, you can produce and publish programs, and manage the device via this communication method.

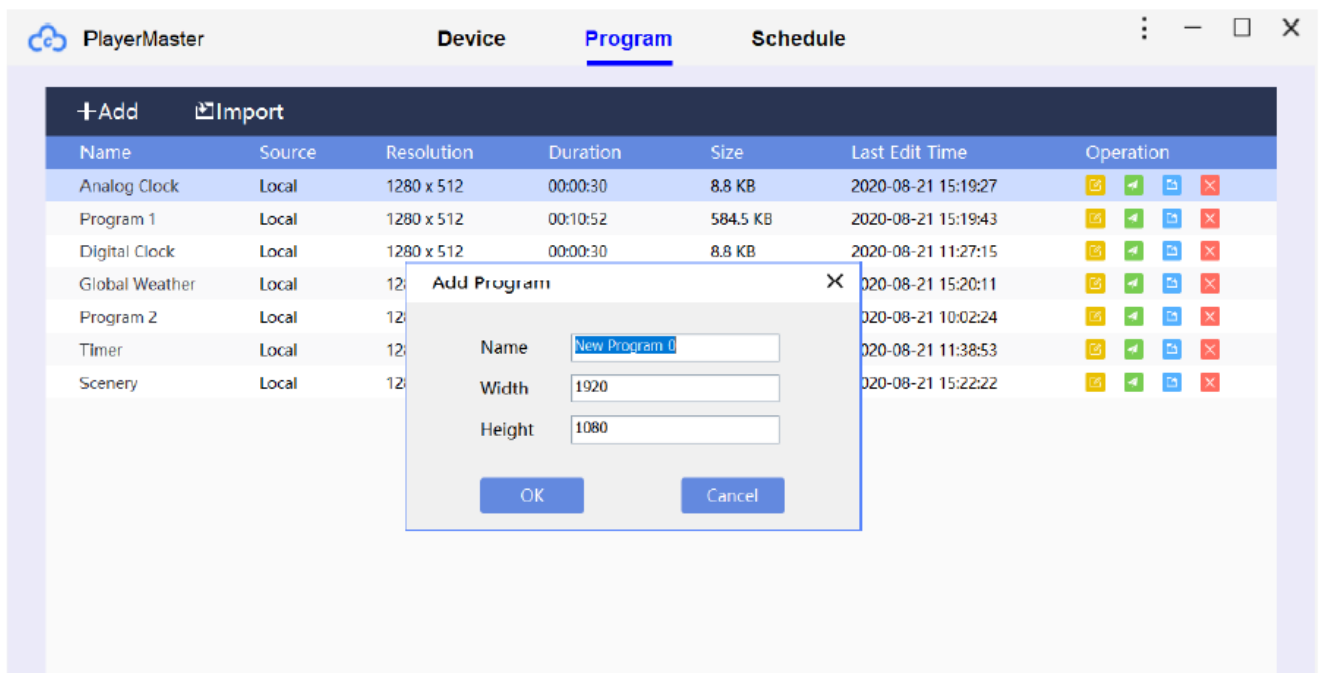
Step 3: Configure other parameters.

Other functions: viewing schedules, brightness settings, volume settings, time settings, power settings, device language settings, advanced settings.



Step 4: Edit and publish programs

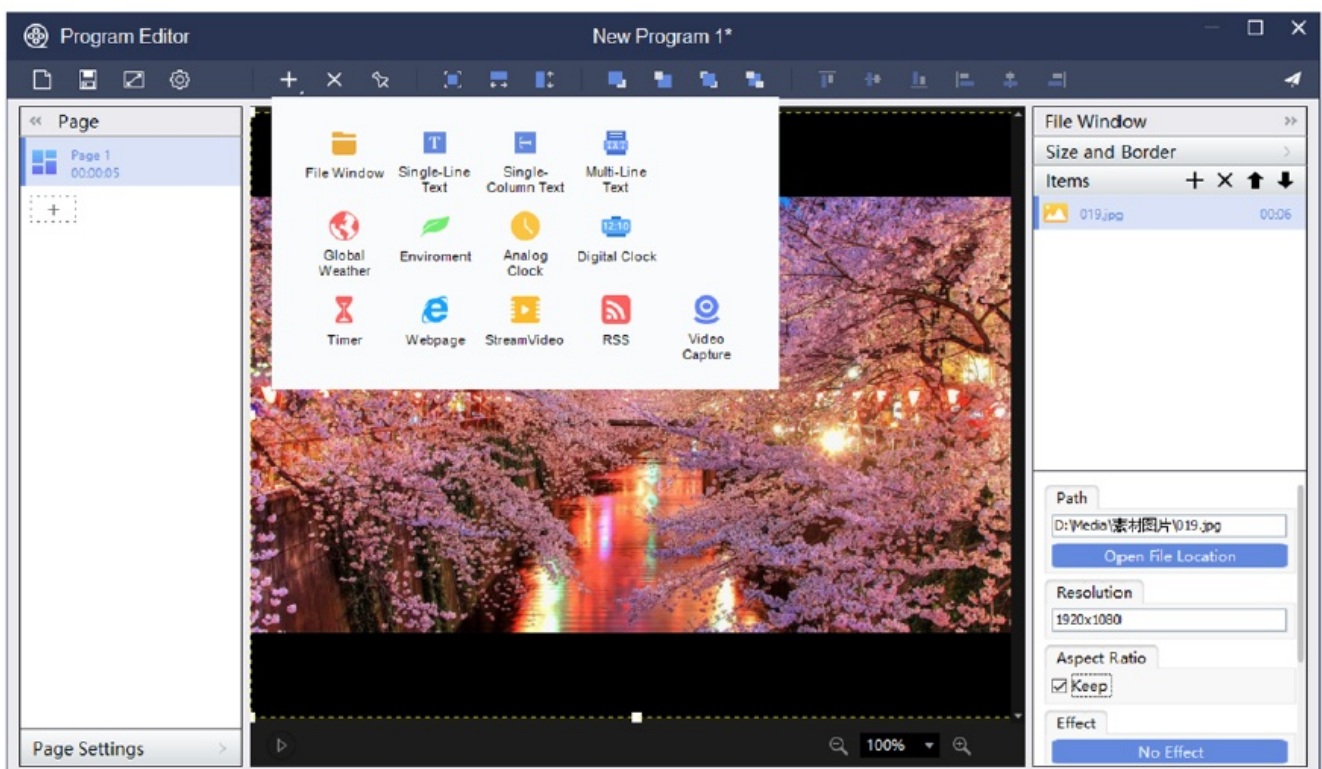
1. On the Program page, click , and set program resolution (the same as screen resolution generally), and then click OK to enter the Program Editor window.



Program	Programs can be separately sent to the player for playing.
Page	If you want different window layouts in the same program, you can set the layouts in different program pages.
Window	You can add more than one window to one page. The content of windows on the same page will play simultaneously. You can set the layout of a program by adjusting the location and size of windows.
Items	It refers to the content displayed on the LCD display, including the video, picture, Gif, text file and Office file.

Note: Program pages in the same program and contents in the same window both play successively, while contents in different windows on the same program page play simultaneously

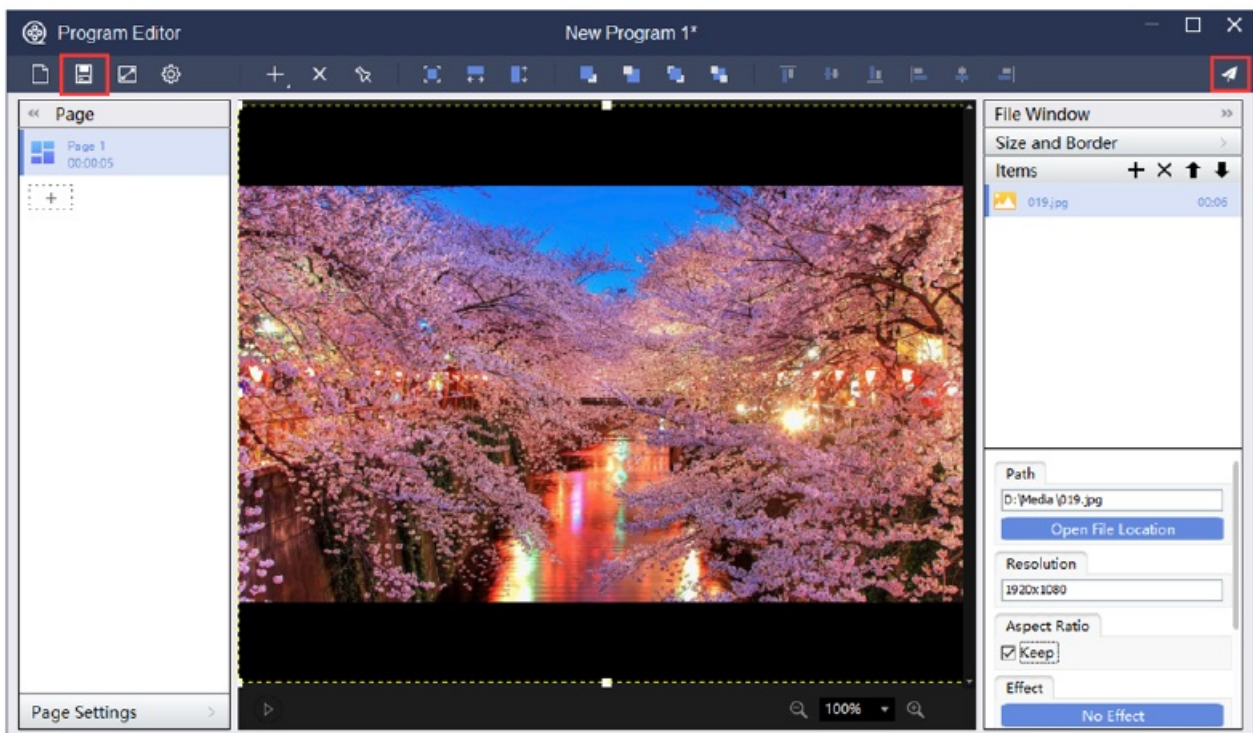
2. Click to add different types of windows.



Description of Program Window Type

No.	Type	Description
1	File Window	Video, picture, Gif, Txt file, RTF file, Office file Word Excel PPT
2	Single-Line Text	Txt file, manually entered text
3	Single-Column Text	Txt file, manually entered text
4	Multi-Line Text	Txt file, RTF file, Word file, manually entered text
5	Global Weather	Global city weather
6	Analog Clock	Round analog clock
7	Digital Clock	Digital clock
8	Timer	Count up, count down
9	Webpage	Manually enter a website, such as "www.colorlightinside.com"
10	StreamVideo	Streaming media website program
11	RSS	News subscription

Select different windows and items that you wish to add to your program. After editing the program, click to save the program, and click to publish the program.



After sending the program, the LCD display will display the content you have just published.

Publish Details					
<div> <div>Program</div> <div>Program Schedule</div> <div>Command Schedule</div> </div>					
Name	Device/Gro...	Size	Comple...	Progress	Date Published
New Program 1	A2K	819.4 KB	819.4 KB	100% <div></div>	2020-11-26 20:09:34

Note

Now you have mastered the basic functions of the A2K player. You can refer to the PlayerMaster User Manual for a detailed description of advanced functions or contact our technical staff for more information.

FCC Caution

This device complies with part 15 of the FCC rules. Operation is subject to the following two conditions: (1) this device may not cause harmful interference, and (2) this device must accept any interference received, including interference that may cause undesired operation.

Changes or modifications not expressly approved by the party responsible for compliance could void the user's authority to operate the equipment.

Important NOTE: This equipment has been tested and found to comply with the limits for a Class B digital device, pursuant to part 15 of the FCC Rules. These limits are designed to provide reasonable protection against harmful interference in a residential installation. This equipment generates uses and can radiate radio frequency energy and if not installed and used in accordance with the instructions, may cause harmful interference to radio communications. However, there is no guarantee that interference will not occur in a particular installation. If this equipment does cause harmful interference to radio or television reception, which can be determined by turning the equipment off and on, the user is encouraged to try to correct the interference by one or more of the following measures:


- Reorient or relocate the receiving antenna.
- Increase the separation between the equipment and receiver.
- Connect the equipment into an outlet on a circuit different from that to which the receiver is connected.
- Consult the dealer or an experienced radio/TV technician for help important announcement

This equipment complies with FCC radiation exposure limits set forth for an uncontrolled environment. This equipment should be installed and operated with minimum distance 20cm between the radiator and your body. This transmitter must not be co-located or operating in conjunction with any other antenna or transmitter.

RF Exposure Statement

To maintain compliance with FCC's RF Exposure guidelines, This equipment should be installed and operated with minimum distance of 15cm the radiator your body. This device and its antenna(s) must not be co-located or operation in conjunction with any other antenna or transmitter.

Documents / Resources

 The image shows the cover of a user manual for the Colorlight A2K LED Screen High-Definition Player. The cover is white with a blue header containing the Colorlight logo. Below the logo is a photograph of the device, which is a black rectangular unit with two antennas. To the right of the photograph, the word 'INSTRUCTIONS' is written vertically. At the bottom of the cover, the text 'A2K Player' and 'USER MANUAL' are visible.	<p>Colorlight A2K LED Screen High-Definition Player [pdf] User Manual A202CLT, 2AVV2A202CLT, A2K, LED Screen High-Definition Player, A2K LED Screen High-Def inition Player</p>
---	---

Manuals+.