



ColorEdge CS2400S Color Management LCD Monitor User Manual

[Home](#) » [ColorEdge](#) » ColorEdge CS2400S Color Management LCD Monitor User Manual 

Contents

[1 ColorEdge CS2400S Color Management LCD Monitor User Manual](#)

- [1.1 Important](#)
- [1.2 Information for Radio Interference](#)
- [1.3 Declaration of compliance with India RoHS](#)
- [1.4 Product Information Sheet](#)

[2 Documents / Resources](#)

[3 Related Posts](#)

ColorEdge CS2400S Color Management LCD Monitor User Manual

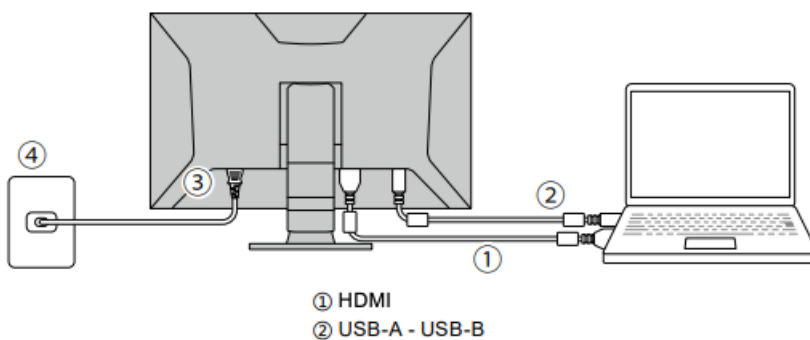
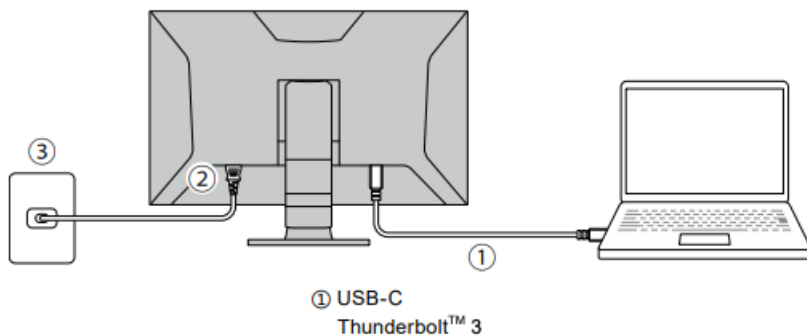
Important

Please read PRECAUTIONS, this Setup Guide and the User's Manual carefully to familiarize yourself with safe and effective usage. Please retain this guide for future reference.

1



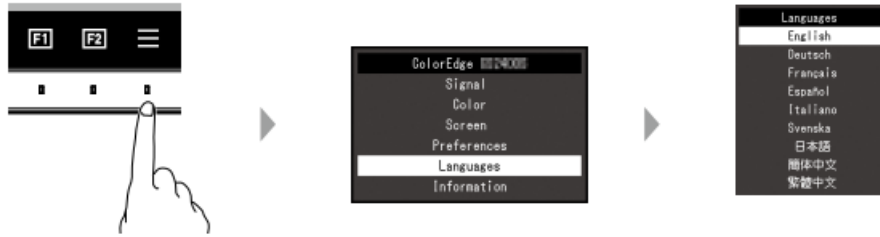
2



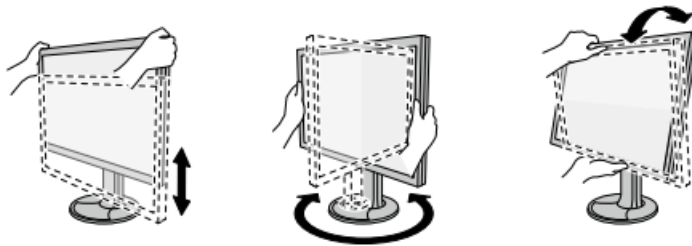
3



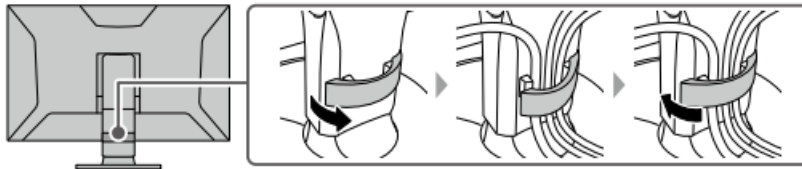
4



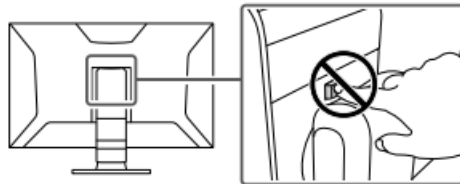
5



6



CAUTION / VORSICHT /
ATTENTION / ВНИМАНИЕ /

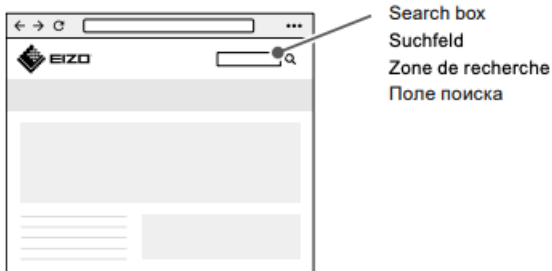


The lock button is only used to remove the stand from the monitor. In other cases, using the lock button may result in product damage or personal injury due to the monitor becoming detached from the stand.

Install ColorNavigator 7 or Quick Color Match on the computer. For the latest product information including ColorNavigator 7, Quick Color Match, and "User's Manual" of this monitor, refer to our web site:

www.eizo.com

7



ColorNavigator 7

Using the sensor and ColorNavigator 7, you can calibrate the monitor and create/edit the adjustment target.

Please take note that the sensor is not included with the monitor. It is sold separately.

Quick Color Match

You can easily match the colors on the monitor screen with the colors used for photo printing. A printer and retouching software that are compatible with this software are required.

Information for Radio Interference

For U.S.A., Canada Only

FCC Supplier's Declaration of Conformity

We, the Responsible Party

EIZO Inc.
5710 Warland Drive, Cypress, CA 90630
Phone: (562) 431-5011

declare that the product

Trade name: EIZO
Model: ColorEdge CS2400S

is in conformity with Part 15 of the FCC Rules. Operation of this product is subject to the following two conditions: (1) this device may not cause harmful interference, and (2) this device must accept any interference received, including interference that may cause undesired operation.

This equipment has been tested and found to comply with the limits for a Class B digital device, pursuant to Part 15 of the FCC Rules. These limits are designed to provide reasonable protection against harmful interference in a residential installation. This equipment generates, uses, and can radiate radio frequency energy and, if not installed and used in accordance with the instructions, may cause harmful interference to radio communications. However, there is no guarantee that interference will not occur in a particular installation. If this equipment does cause harmful interference to radio or television reception, which can be determined by turning the equipment off and on, the user is encouraged to try to correct the interference by one or more of the following measures.

- Reorient or relocate the receiving antenna.
- Increase the separation between the equipment and receiver.
- Connect the equipment into an outlet on a circuit different from that to which the receiver is connected.
- Consult the dealer or an experienced radio/TV technician for help.

Changes or modifications not expressly approved by the party responsible for compliance could void the user's authority to operate the equipment.

Note

Use the attached specified cable below or EIZO signal cable with this monitor so as to keep interference within the limits of a Class B digital device.

- AC Cord

- Shielded Signal Cable (enclosed)

Canadian Notice

This Class B information technology equipment complies with Canadian ICES-003.

Declaration of compliance with India RoHS

We, EIZO Corporation, hereby declare and guarantee that this product has been designed and manufactured in compliance with the E-Waste management rule 2016 which prohibit the inclusion of the following substances except for the exemptions listed in schedule II.

- Lead, Mercury, Hexavalent Chromium, Polybrominated Biphenyls or Polybrominated Diphenyl Ethers exceeding a concentration of 0.1% by weight in homogeneous materials
- Cadmium exceeding a concentration of 0.01% by weight in homogeneous materials

For information on proper disposal and recycling of the product, please refer to the following website.

eizo.co.in/e-waste.php

Product Information Sheet

COMMISSION DELEGATED REGULATION (EU) 2019/2013 with regard to energy labelling of electronic displays

