



COLOR KINETICS FlexElite IntelliHue RGBW RGBA IntelliWhite Instruction Manual

[Home](#) » [COLOR KINETICS](#) » COLOR KINETICS FlexElite IntelliHue RGBW RGBA IntelliWhite Instruction Manual



Contents

- [1 COLOR KINETICS FlexElite IntelliHue RGBW RGBA IntelliWhite](#)
- [2 FlexElite](#)
- [3 INSTALLATION](#)
- [4 Confirm all components received](#)
- [5 Make sure power is OFF](#)
- [6 FCC STATEMENT](#)
- [7 Documents / Resources](#)
 - [7.1 References](#)
- [8 Related Posts](#)

COLOR KINETICS

COLOR KINETICS FlexElite IntelliHue RGBW RGBA IntelliWhite

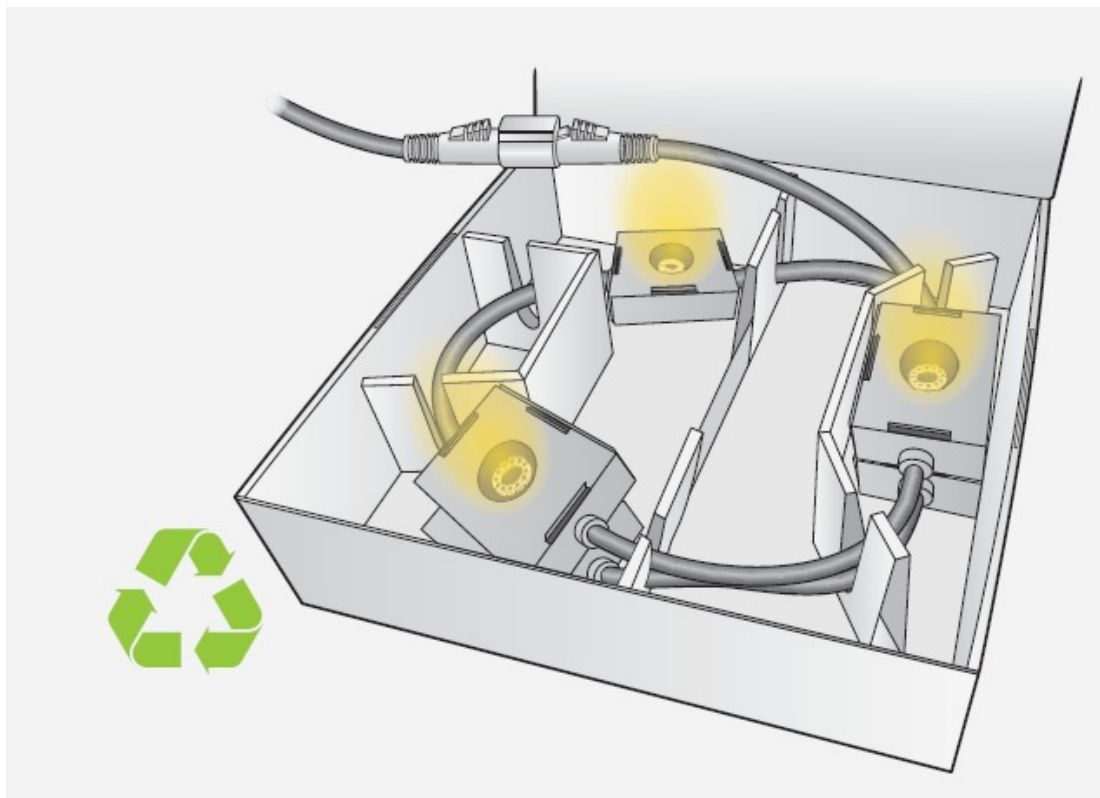


FlexElite

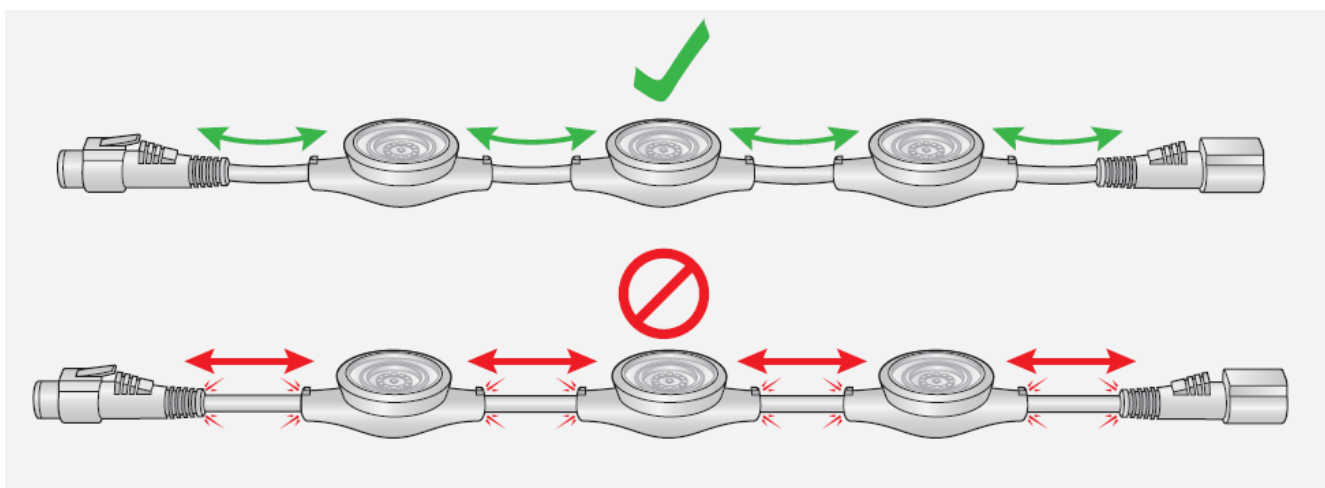
IntelliHue, RGBW, RGBA, IntelliWhite

IMPORTANT

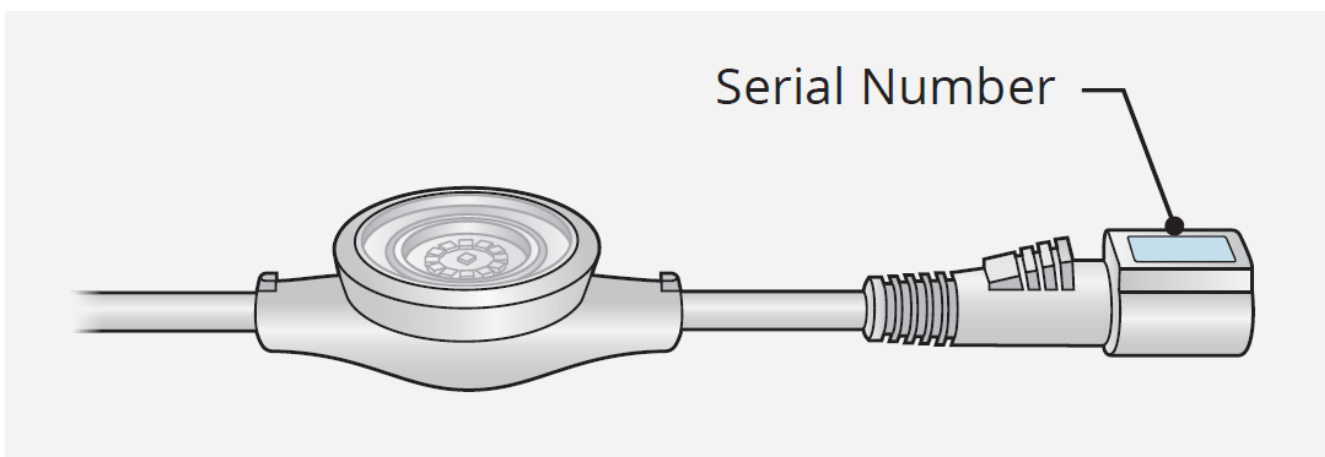
- A Must be installed by a qualified electrician in accordance with all national and local electrical and construction codes and regulations.
- Before installing this product, please visit the product page at www.colorkinetics.com for the latest version of the installation instructions. Due to continuous improvements and innovations, installation instructions may change without notice.
- FlexElite LED node system must be powered and controlled through a Power/Data Supply such as the PDS-400 48V CA4, CM-550 48V CA4 or other approved hardware.
- Keep nodes in protective packaging shells until final installation.
- Pre-testing of node sections can be performed in the shipping box.



- Do not hot swap node sections



- Do not overstretch node sections.
- Record location and a serial number of each node section.

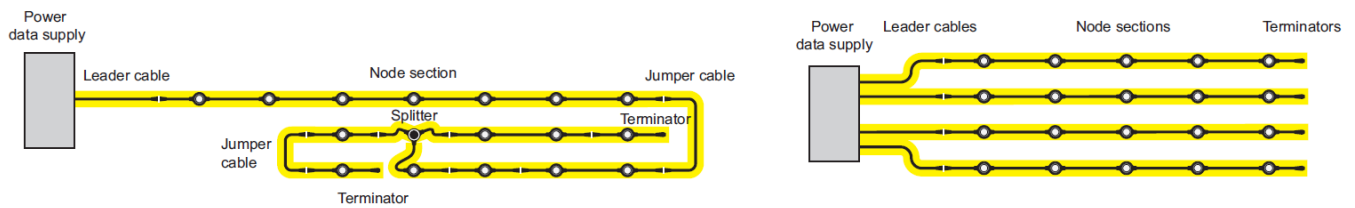


- Ensure that main power supply is off before installing or wiring a luminaire.

- Luminaires have no user-serviceable parts. Do not attempt to open them.
- Do not use a luminaire if the lens, housing, or power cables are damaged
- Do not attempt to install or use a luminaire until you read and understand the installation instructions and safety labels.
- The luminaire is suitable for direct mounting on flammable structural materials, i.e., wood, etc.
- The luminaire shall, under no circumstance, be covered with insulating material of any kind.
- Do not hot swap luminaires. Ensure that power to the series is off before connecting or disconnecting individual luminaires.

INSTALLATION

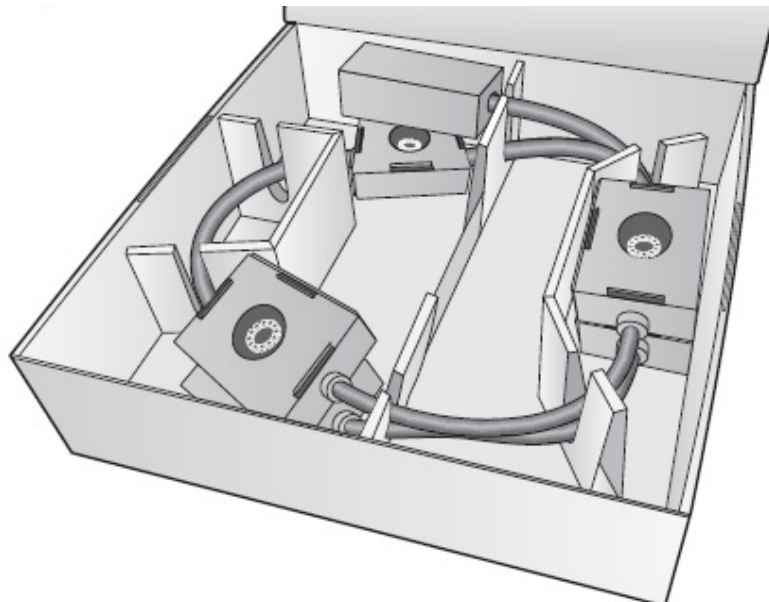
Verify the electrical plan and all necessary surge protection requirements



1. 128 nodes maximum per Power/Data Supply
2. Minimum node spacing: 305 mm (12 in) on-center
3. 91.4 m (300 ft) maximum per run (PDS to terminator)
4. Maximum splitter count: 8 levels per port

For configurations exceeding these limits: www.colorkinetics.com/global/how-to-buy

Confirm all components received



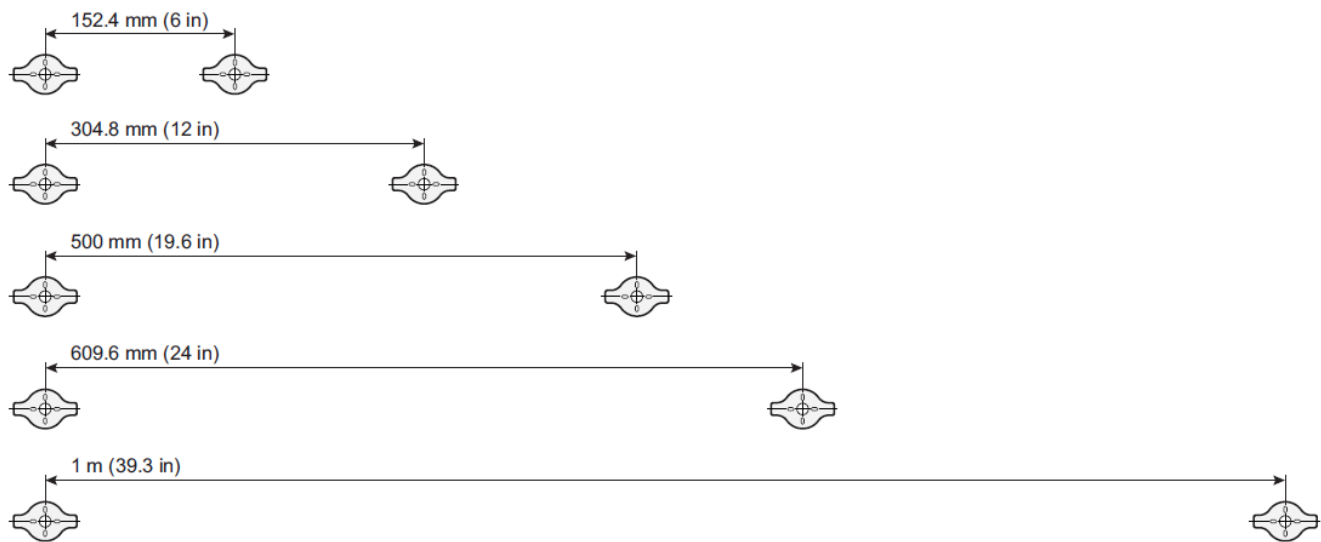
Keep node sections boxed until final installation



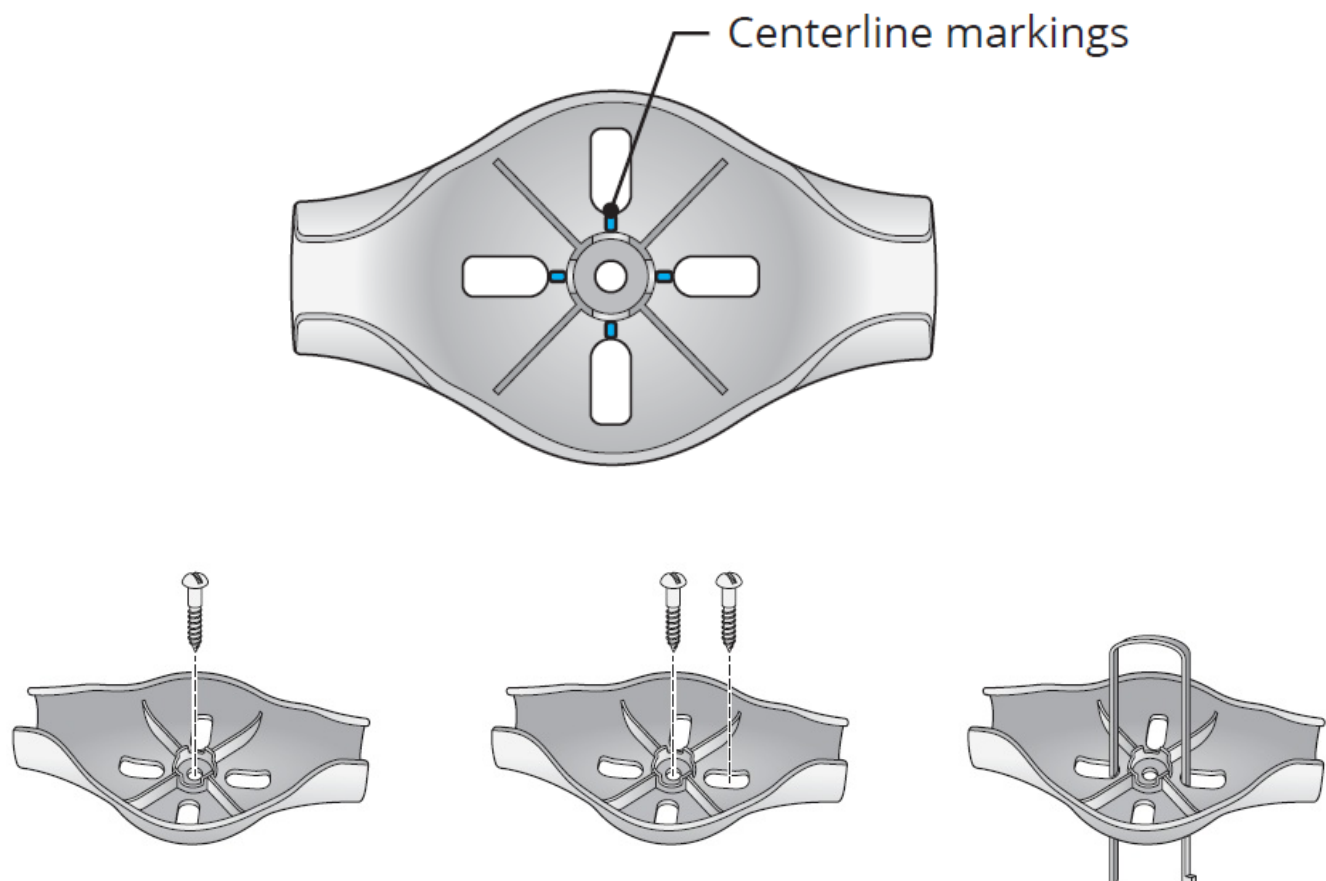
1. Leader cable with terminator
2. Jumper cable (optional)
3. Node mounting clips (optional)
4. Dome lens (optional)
5. Splitter (optional)

Install node mounting clips

Mounting clip spacing



Do not over stretch node sections.

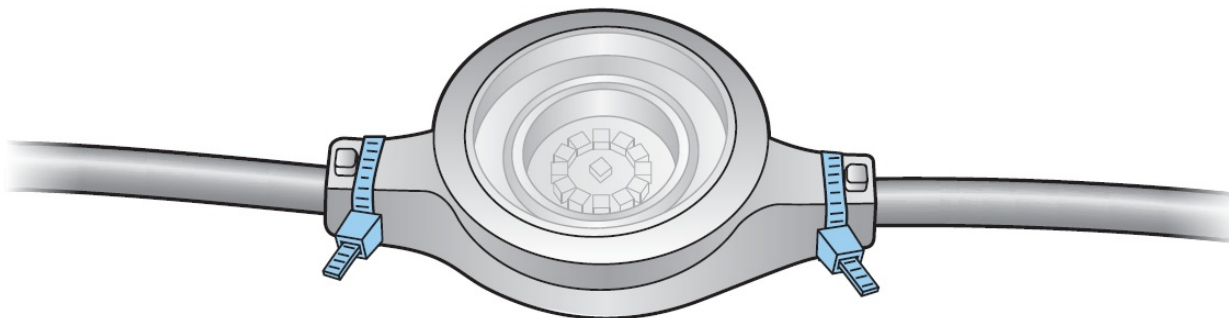


1. Center screw
2. Two screws
3. Zip tie

Install node without mounting clip

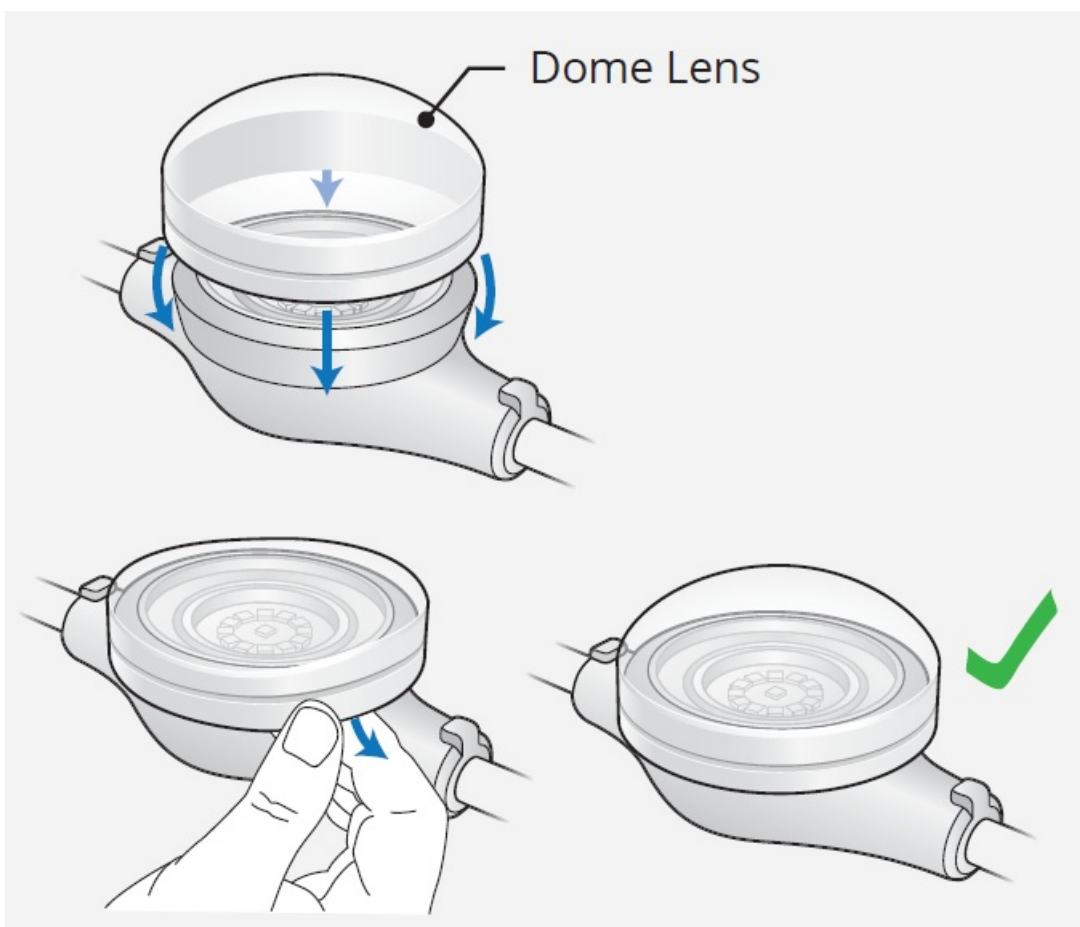
Mounting hardware customer supplied

Zip tie

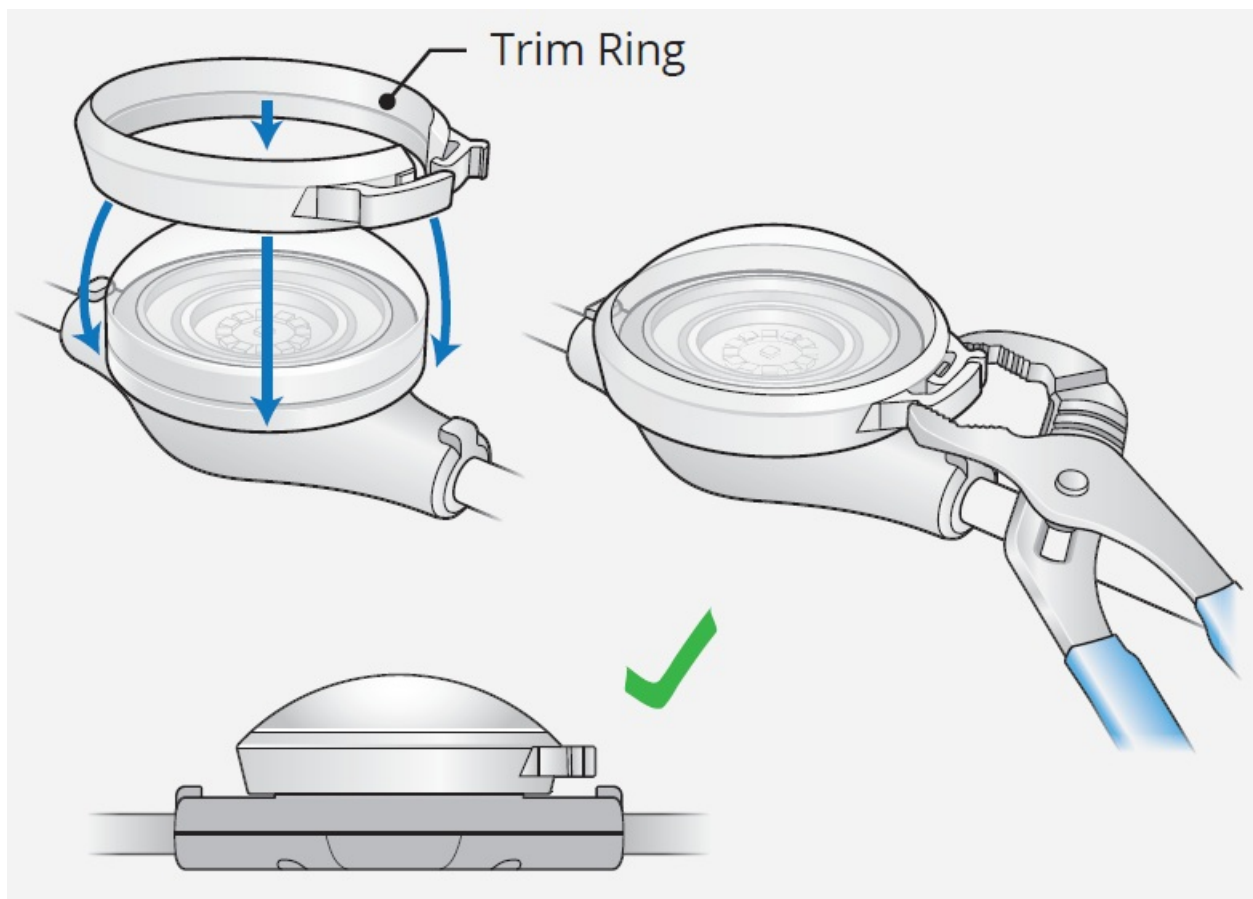


Attach optional Dome Lens accessory

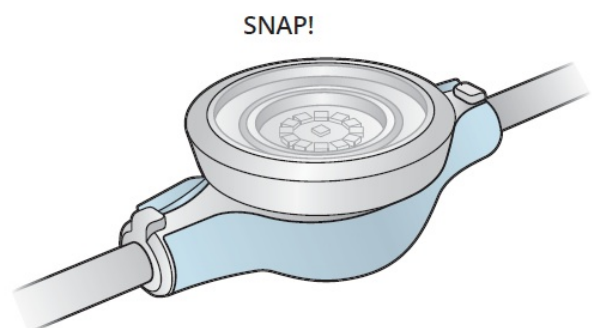
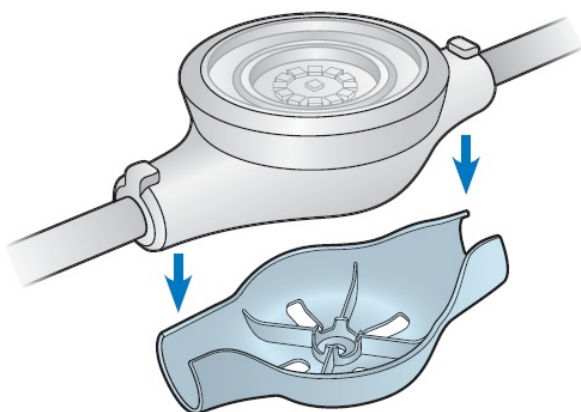
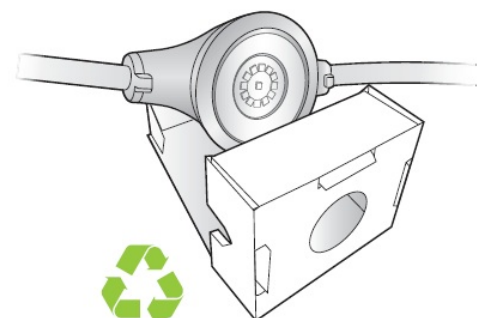
- Release air vacuum to restore dome shape



- Trim Ring can not be repositioned after clamping

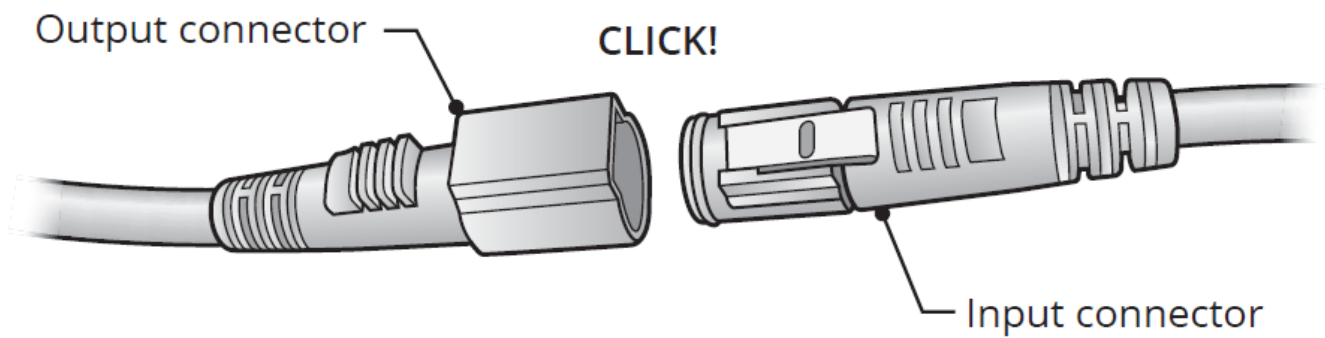


Remove node from protective packaging shell and secure into mounting clip



Make sure power is OFF

Connect node sections



- Leader cable to node sections



- Jumper cable to node sections



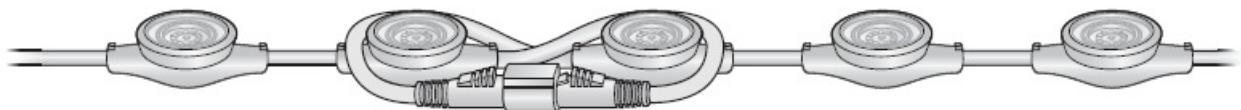
- Direct connect node sections



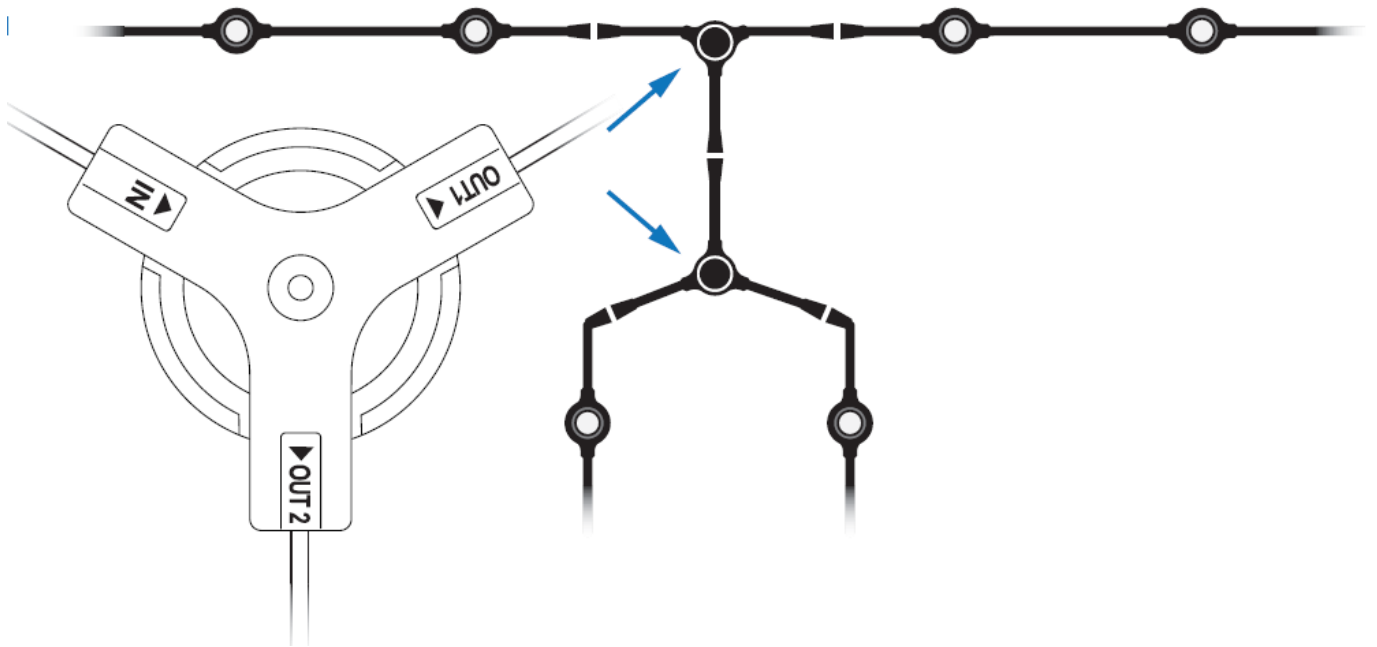
- Jumper cable to jumper cable



- Connecting node strings while maintaining 152.4 mm (6 in) or 304.8 mm (12 in) node spacing

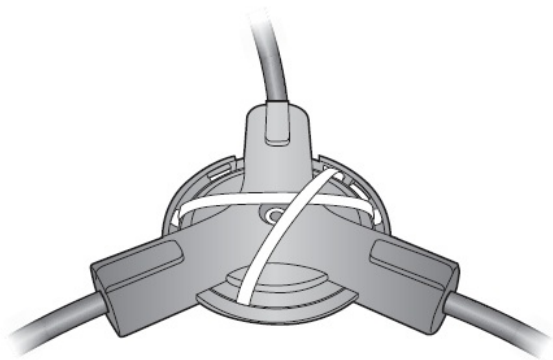


Connect optional Splitter

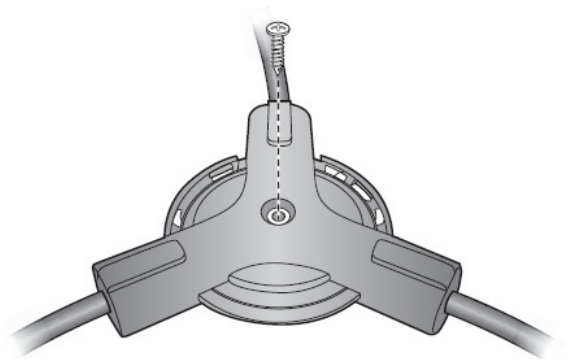


Don't stress connectors. Mount Splitter before attaching node sections.

Mounting options



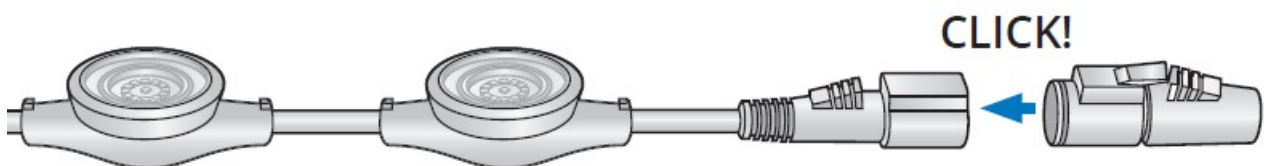
Zip tie



Center screw

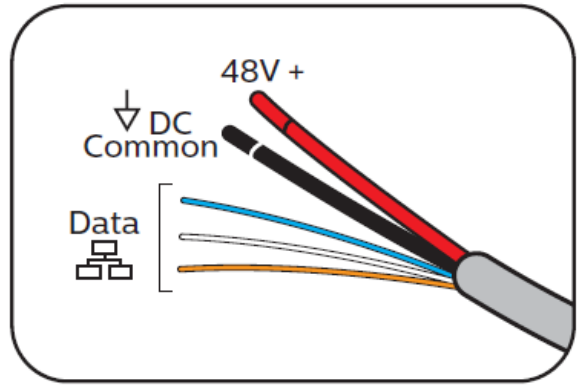
1. Zip tie
2. Center screw

Attach Terminator



Terminator required at the end of each complete run

Connect leader cable to Power/data supply



48V +	Voltage Tension Tensión Tensione Spanning Spannung 電圧 電壓	↓ DC Common	DC Common commune à courant continu común de corriente continua comune corrente continua gelijkspanning gemeenschappelijke Gleichspannungs gemeinsame 直流コモン 直流通用	Data	Data Données Datos Dati Data Daten データ 数据
-------	---	-------------	---	------	--

Refer to PDS-400 48V CA4 or CM-550 48V CA4 Installation Instructions for specific mounting and wiring instructions.

Turn the power ON

Test system when installation is complete

Address luminaires with QuickPlay Pro 2 software

FCC STATEMENT

This device complies with Part 15 of the FCC Rules. Operation is subject to the following two conditions: (1) this device may not cause harmful interference, and (2) this device must accept any interference received, including interference that may cause undesired operation. This equipment has been tested and found to comply with the limits for a Class A digital device, pursuant to Part 15 of the FCC Rules. These limits are designed to provide reasonable protection against harmful interference when the equipment is operated in a commercial environment. This equipment generates, uses, and can radiate radio frequency energy and, if not installed and used in accordance with the instruction manual, may cause harmful interference to radio communications. Operation of this equipment in a residential area is likely to cause interference in which case the user will be required to correct the interference at his own expense.

1. This Class A digital apparatus complies with Canadian ICES-003. Cet NMB-003 du Canada.
2. This product contains a light source of energy efficiency class
3. For additional Energy Efficiency Class Information, please refer to

<https://colorkinetics.helpdocs.io/article/cviis2p8qq>

© 2021 Signify Holding. All rights reserved. Specifications are subject to change without notice. No representation or warranty as to the accuracy or completeness of the information included herein is given and any liability for any action in reliance thereon is disclaimed.

Address and Configure: <https://www.colorkinetics.com/global/support/qpp2>

Documents / Resources

	<p>COLOR KINETICS FlexElite IntelliHue RGBW RGBA IntelliWhite [pdf] Instruction Manual FlexElite IntelliHue RGBW RGBA IntelliWhite</p>
---	--

References

- [Color Kinetics Official Website | Homepage](#)
- [How to Buy | Color Kinetics](#)
- [Understanding Surge Protection For LED Lighting Systems - Knowledgebase](#)
- [Color Kinetics Energy Label information - Knowledgebase](#)
- [QuickPlay Pro 2 | Color Kinetics](#)

[Manuals+.](#)