



Colmol TIDY SOMMIER WITH STORAGE AVEC RANGEMENT Instruction Manual

[Home](#) » [Colmol](#) » Colmol TIDY SOMMIER WITH STORAGE AVEC RANGEMENT Instruction Manual 

Contents

- [1 Colmol TIDY SOMMIER WITH STORAGE AVEC RANGEMENT](#)
- [2 Product Information](#)
- [3 Product Usage Instructions](#)
- [4 OVERVIEW](#)
- [5 INSTALLATION](#)
- [6 CONTACT](#)
- [7 Documents / Resources](#)
 - [7.1 References](#)



Colmol TIDY SOMMIER WITH STORAGE AVEC RANGEMENT



Product Information

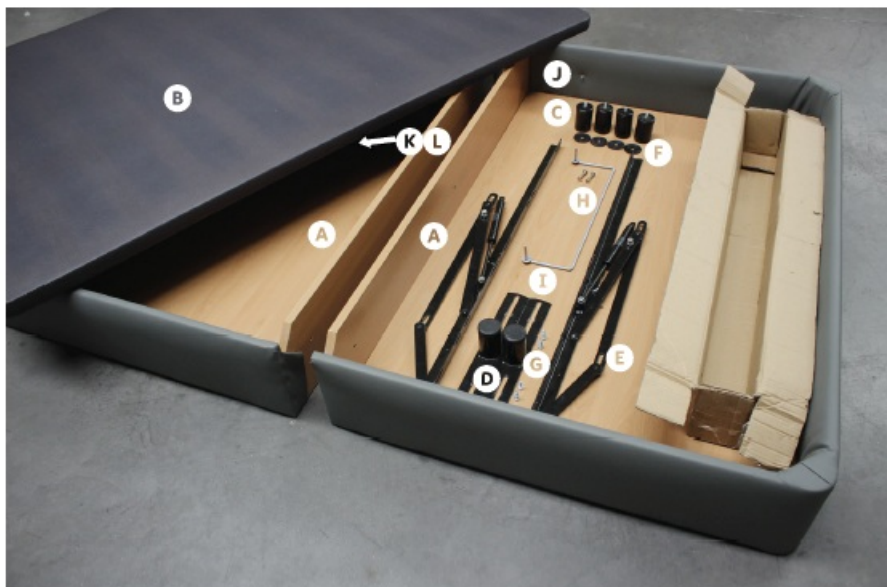
The Tidy Sommier is a bed designed for organized individuals, providing an attractive design, high comfort, and ample storage space. It is manufactured by Colmol, a company dedicated to ensuring the quality of your rest and helping you keep your home tidy and organized.

Product Usage Instructions

1. **Base Box Union:** Connect the 2 base boxes by placing and tightening the screws (H) with their nuts in the 2 holes on each side of the boxes.
2. **Feet Placement:** Place 1 foot (C) in each corner of the joined base boxes. Each foot is equipped with a screw that must be screwed into the holes with nuts located in each corner. Insert a plastic washer (F) between each foot and the base box. No tools are required for this action.
3. **Final Appearance:** After applying the components, the bottom of the base boxes will have a final appearance. Refer to the image provided in the user manual for visual guidance.
4. **Fixing the Mattress Retaining Beacon:** Insert the 2 ends of the mattress retaining beacon (I) into the holes on the top, next to the headboard (the same side where the joints are attached). Use a wooden or plastic mallet to perform this task. If a mallet is not available, a hammer can be used, but ensure to place a piece of thick cardboard between the hammer and the beacon to avoid damaging the metal surface.

Congratulations on your new Tidy Sommier! Follow these instructions to set it up and enjoy an improved quality of sleep/rest. If you have any doubts or need further information, please contact Colmol's Customer Support line at suporte@colmol.pt or call +351 300 600 110. For more information, visit Colmol's website: www.colmol.pt.

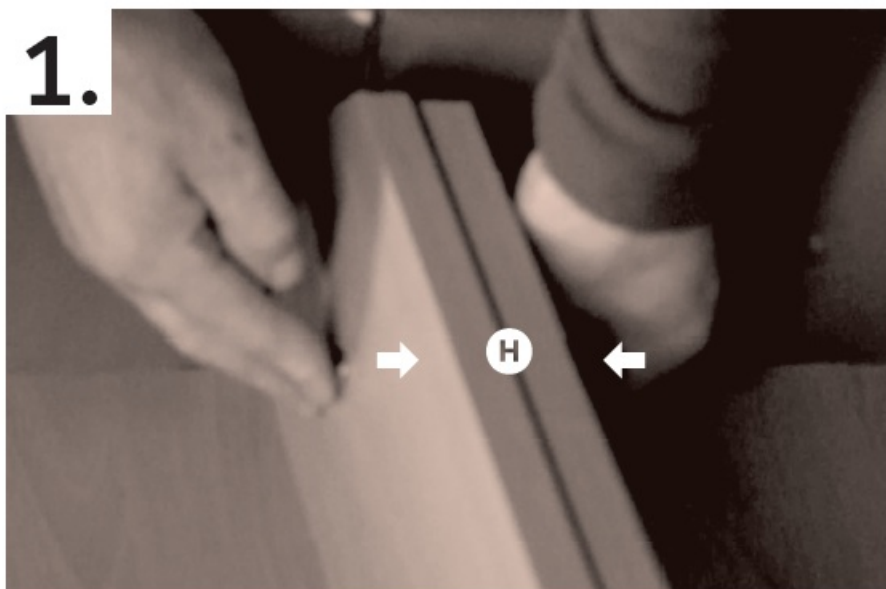
OVERVIEW



LIST OF COMPONENTS

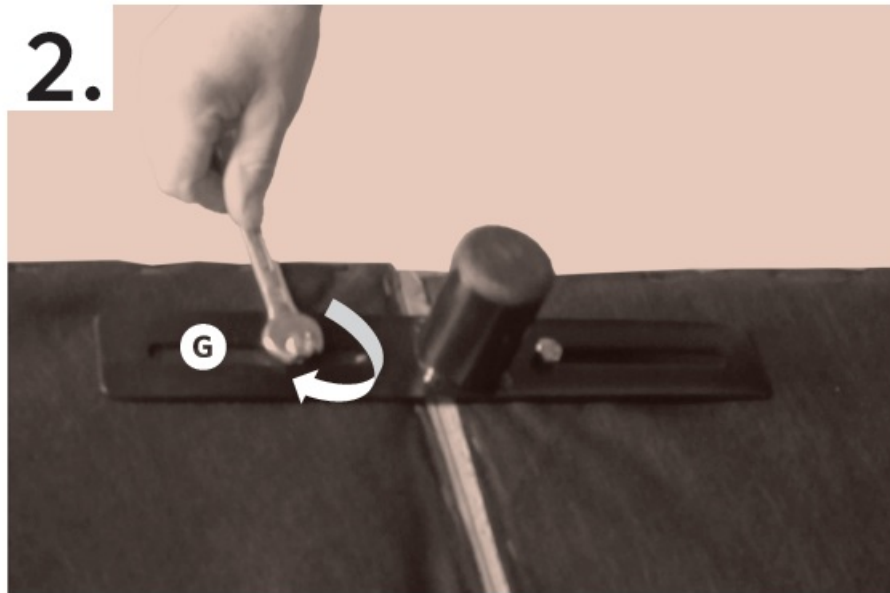
- A Base box ×2
- B Lid ×1
- C Feet ×4
- D Connection feet ×2
- E Metal hardware ×2
- F Feet washers ×4
- G Connection feet fixing screws ×4
- H Screws/nuts base boxes union ×2
- I Mattress retaining beacon ×1
- J Metal hardware fixing screws / nuts ×4
- K Top fixing screws ×6
- L Top fixing nuts ×6

INSTALLATION



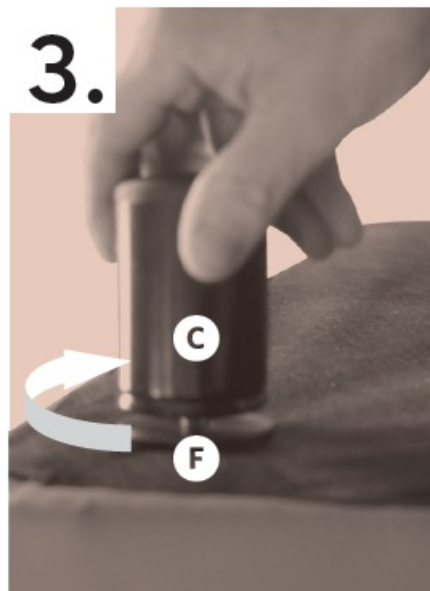
BASE BOX UNION (2X)

Connect the 2 base boxes by placing and tightening the screws with their nuts (H) in the 2 holes on each side of the boxes.



UNION FEET PLACEMENT (2x)

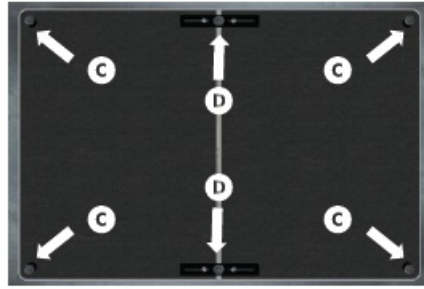
- Place 1 connecting foot (D) on each side of the joined boxes. In each of the two slots, insert and tighten 1 screw (G) using spanner n°13.
- This action not only fixes the joining feet but also guarantees the solidity of the set. The connecting feet must be adjusted to be centered between the base boxes.



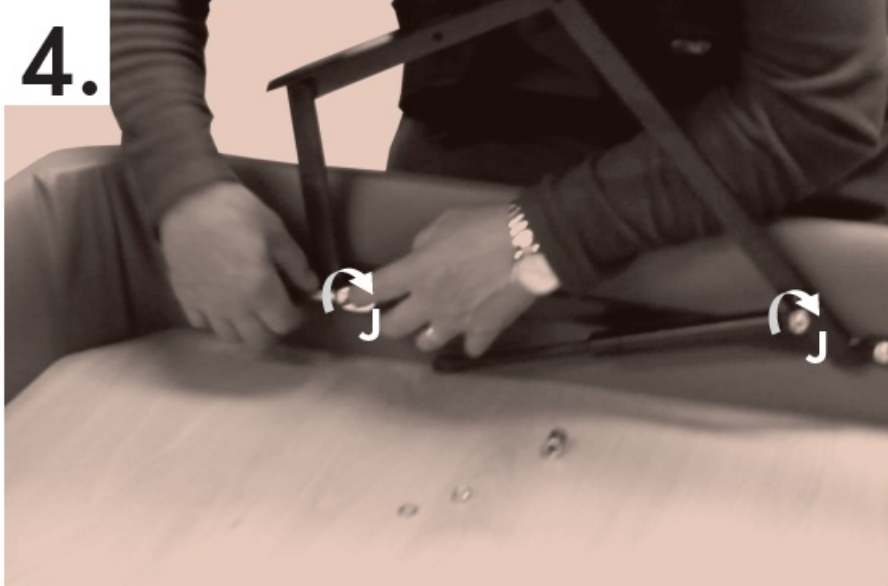
FEET PLACEMENT 4X)

- Place 1 foot (C) in each corner of the joined base boxes.
- Each foot is equipped with a screw that must be screwed into the holes with nuts, located in each corner.
- A plastic washer (F) must be inserted between each foot and the base box. This action does not require a tool.

Final appearance of the base boxes bottom after applying the components



4.



METAL HARDWARE PLACEMENT (2×)

The metal hardware must be attached to the base box on the headboard side by placing and tighten 2 nuts on the screws (J) previously installed on each side of the box using spanner n°13.

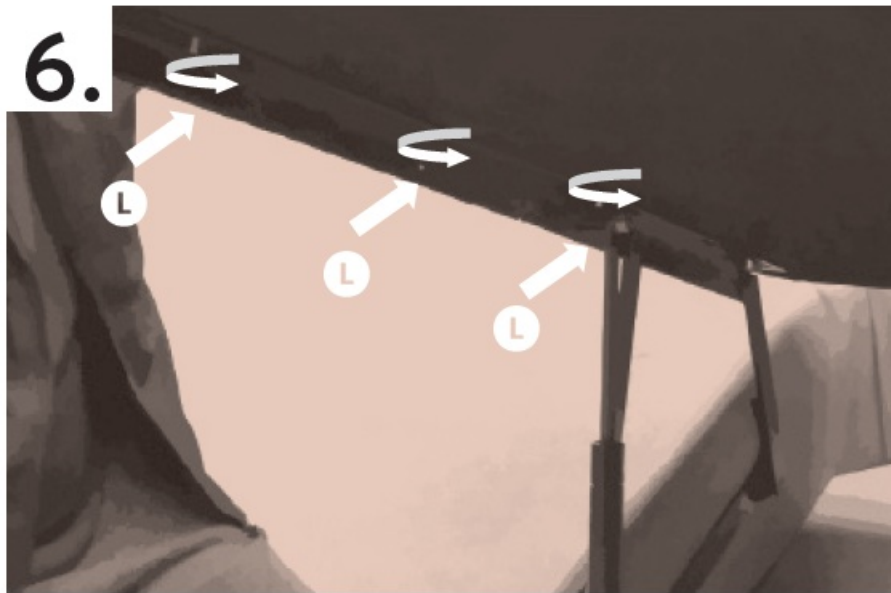
Note: The side of the hardware to be attached to the box has 2 screw holes , while the upper side of the hardware, which joins the top, has 3 screw holes.

5.



DAMPERS FIXATION (2×)

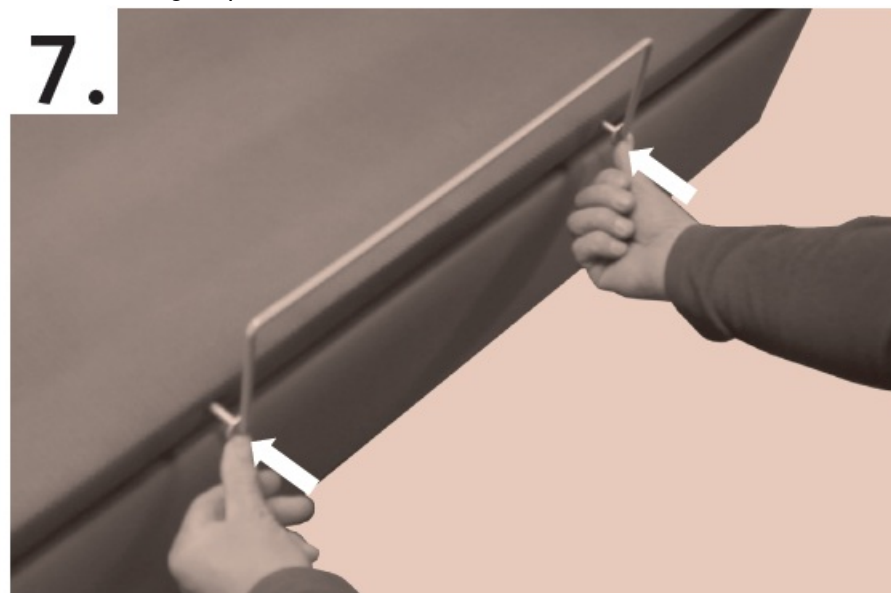
The dampers are previously fixed on the bottom of the fittings and must be joined to the upper side of the metal hardware by placing and tightening the 2 nuts (previously screwed on the screws installed on the upper side of each metal hardware). To perform this task, a spanner n°13 must be used. You need to open each hardware the screw can be easily inserted into its respective hole in each damper.



LID FIXATION (2×)

The lid must be placed on the raised joints. The 6 screws (K) previously built into the lid must match the holes in the upper bars of the joints. Subsequently, 6 nuts (L) must be placed and screwed on the screws that are embedded in the top. These nuts are originally screwed on the lid screws.

Note: This work must be performed by 2 people: one to place and keep the top in the correct position, the other to place and tighten the 6 nuts using a spanner #10..



FIXING THE MATTRESS RETAINING BEACON

The 2 ends of the mattress retaining beacon (I) must be inserted into the holes on the top, next to the headboard (the same side where the joints are attached).

To perform this task, a wooden or plastic mallet should be used. If you do not have this tool, you can use a hammer, but be careful to place a piece of thick cardboard between the hammer and the beacon to avoid damaging the metal surface of the beacon.



The ideal bed for those who wish to have extra storage space in their room.


Congratulations!

You now have a Tidy sommier, which is the dream of any organized person . Besides its attractive design and high comfort, this bed also provides plenty of storage space. Colmol cares about the quality of your rest and helps you keep your home tidy and organized. If you have doubts or need more information, call Colmol's Customer Support line. We will be happy to assist you in setting up your Tidy Sommier. Follow the instructions in this manual and enjoy your new sommier. It will help improve the quality of your sleep/rest.

CONTACT

- www.colmol.pt.
- suporte@colmol.pt.
- Tel. +351 300 600 110

Documents / Resources

 <p>Colmol® TIDY SOMMIER COM ARMADILHA WITH STORAGE AVEC RANGEMENT</p> <p>Manual de Instruções - Instruction Manual - Manual d'Instructions</p>	<p>Colmol TIDY SOMMIER WITH STORAGE AVEC RANGEMENT [pdf] Instruction Manual TIDY SOMMIER WITH STORAGE AVEC RANGEMENT, TIDY, SOMMIER WITH STORAGE AVEC RANGEMENT, WITH STORAGE AVEC RANGEMENT, STORAGE AVEC RANGEMENT, AVEC RANGEMENT, RANGEMENT</p>
--	---

References

- [COLMOL - O Melhor Colchão para o teu Descanso](#)
- [User Manual](#)

