



## Colesma Smart Watch Application User Guide

[Home](#) » [Colesma](#) » Colesma Smart Watch Application User Guide 

# Colesma

### User Guide

#### Contents

- [1 Smart Watch Application](#)
- [2 Documents / Resources](#)
  - [2.1 References](#)
- [3 Related Posts](#)

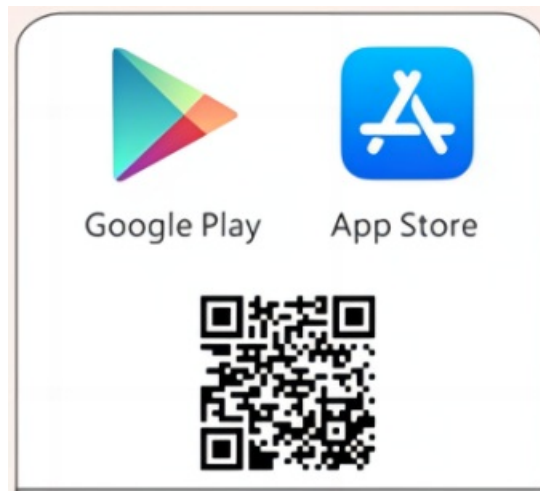
### Smart Watch Application

Turn on your mobile phone Bluetooth, connect our smart watch to the “FitCloudPro” App.

1.



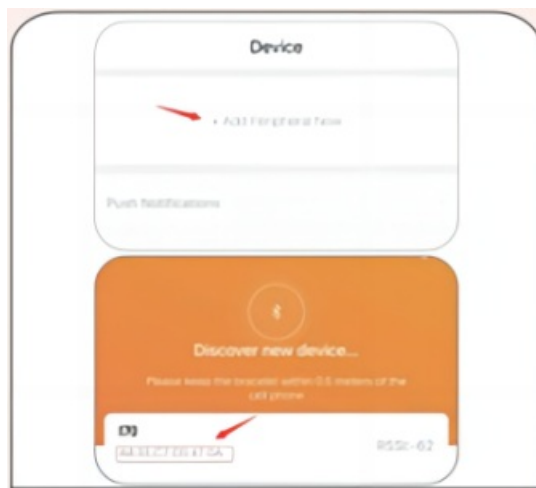
Turn on the “Bluetooth” function of your phone.



2. Open “Google Play” or the “App Store”.



3. Search for the “FitCloudPro” App and download it.



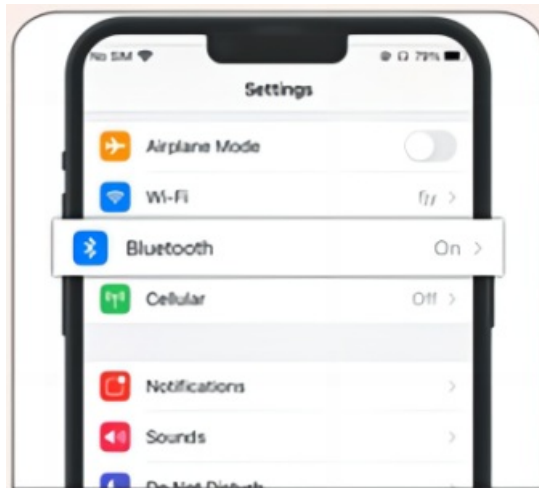
4. Open the App, click “Device”, find ” 170 “and \bind it.

### TIPS to enable the answer/call function

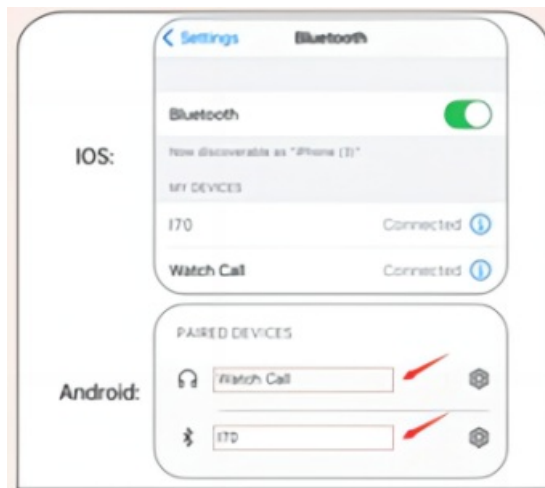
1.



Open the drop- down menu of the watch, and light UP the “Call” function icon.



2. Open the phone “Settings”and turn on the “Bluetooth” function.



3. Find “Watch Call” and click to connect it.




4. Once connected, you could use the watch to answer/make calls anytime.

# Colesma

---

## Documents / Resources

	<a href="#">Colesma Smart Watch Application</a> [pdf] User Guide Smart Watch Application, Smart Watch, Application
---	---

## References

- [User Manual](#)