



**Contents** [ [hide](#) ]

- [1 Cokunst PSB-4 Portable Lid Juice Extractor](#)
- [2 Product Components](#)
- [3 Installation of The Portable Lid](#)
- [4 Technical Specifications](#)
- [5 Instructions before Use](#)
- [6 How to Use](#)
- [7 Cleaning and Maintenance](#)
- [8 TROUBLESHOOTING](#)
- [9 Documents / Resources](#)
  - [9.1 References](#)

*Cokunst*

## **Cokunst PSB-4 Portable Lid Juice Extractor**

**Notice:**

Please do not immerse water into the USB charging port.

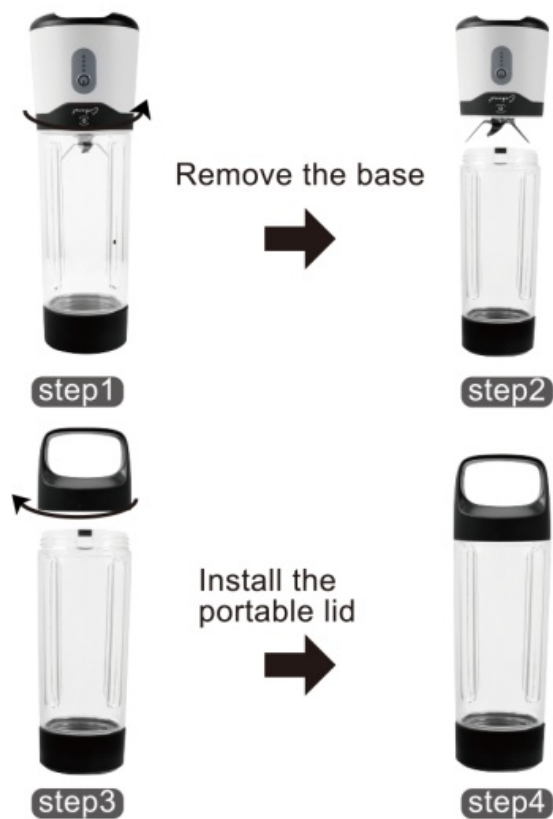
The blender can't be disinfected by microwave or hot water above 122°F.

Please keep the product away from children and the mentally ill.

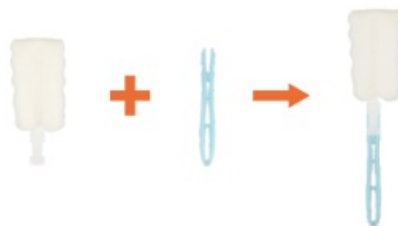
**Product Components**

Model	PSB-4	PSB-6	PSB-7
portable Lid			
Top Lid			
Bottle			
Base	 <div> <p>100% Power •</p> <p>75% Power •</p> <p>50% Power •</p> <p>25% Power •</p> </div>		

## Installation of The Portable Lid



## Assembly of Cleaning Brush



## Technical Specifications

Model	PSB-4	PSB-6	PSB-7
Capacity	18oz	18oz	15.2oz
Recommended Max Capacity	16oz	16oz	13.5oz
Bottle Material	PCTG Food Grade		
Blade Material	304 Stainless Steel		
Motor Revolving Speed	18000-22000rpm		
Working Current	12-20A		

Working Voltage	DC7.4V
Battery Volume	18650 Lithium ion battery 4000mAh

## ATTENTION

- Please charge at least once a month, otherwise the battery will be damaged.
- Please do not use the steel ball, corrosivity cleanser or dishwasher to clean the blender , otherwise the elements will be damaged.
- Please do not put the base into the refrigerator or water,otherwise the battery will be damaged.
- This product is exclusive for juice making, not suitable for blending hard objects such as meat, nuts or beans.
- The blender can't be disinfected by microwave or hot water above 122°F,otherwise the accessories will be deformed.
- Please keep the product away from children and the mentally ill.

## Instructions before Use

- Please clean the blender before use.
- Please click the button once to check the power to ensure the battery is fully charged.
- Please align the arrow on the bottle with the switch when installing the bottle and base.
- Please check the light indication instructions:

## Lighting Instructions

Blender Status	Lighting
<p>Bottle not properly tightened at startup (a rrow on bottle not aligned with switch).</p> <p>Aller spinning the bottle</p> <p>into the base until tightened.</p>	<p>Lights alternately flash red and blue.</p>

When spinning the bottle out of the base.	
Click the button once to check the power status.	Blue light is on. One blue light represents 25% power.
When blending.	All indicator lights will continuously flash upwards in blue.
Low power while blending.	All indicator lights will flash in red.
Out of power while double click the button.	All indicator lights in red or off.
When charging.	Indicator light(s) will flash slowly at current battery level.
When fully charged.	All indicator lights will light up in blue.
Blades gets stuck.	Red light flashes quickly for Bs.

## How to Use

### STEP 1

Tighten the bottle to the base until the arrow on the bottle aligns with the “COKUNST” logo on the base.



### STEP 2

Click the button to check the power. One blue light represents 25% power. Please fully charge the blender before use.



### Step 3

Open the top lid, and put the fruit into the bottle (It is recommended to cut the fruit into 0.6\*0.6 inch sizes. The fruit takes up 20% of the capacity).



### Step 4

Pour in milk or pure water(The liquid takes up 60% of the capacity, fruit plus liquid can not exceed the Max line).



### Step 5

Slightly tilt the blender and double-click the switch button to start, then shake the blender to make sure the fruit is completely mixed with the milk or water.



### Step 6

The blender will auto-stop blending after 30 seconds. Turn the blender upside down, unscrew the base, then screw on the portable lid, and enjoy it at anytime.



### How to Clean

#### METHOD 1:

Add 80% of water, and double-click the button to clean automatically .

## **METHOD 2 :**

If the stain is strong, unscrew the lid and bottle , and clean with the included cleaning brush.(Cover the waterproof cover of the charging port before cleaning!

Do not touch the blade with your hands!)



## **Cleaning and Maintenance**

- Make sure the blades stop running before cleaning.
- Do not use dishwasher steel balls, abrasive cleaners, or corrosive liquids (such as gasoline, or acetone) to clean this product, it is recommended to use the included cleaning brush to clean the blade.
- The host part can be cleaned quickly with flowing water, please dry it in time after cleaning, do not place it in water or other liquids soaked.
- When storing, please ensure that the product is clean, dry and placed in a dry and ventilated place without direct sunlight.

## **Warm Tips**

- To meet the shipping requirements, the blender is shipped with only 60% power, it is recommended to be fully charged before use to ensure battery life .
- It is recommended to recharge in time when the power is below 50% to ensure that the blender has enough power to work.

## **Safety Features**

- Nothing Inside for 5 Seconds – Auto Power-off



- Bottle and Base Separation – Auto Power-off
- Battery is being charged – Auto Power-off
- Gravity Sensing Device
- Indicator Light
- No 100% Power Consumption
- BPA-free Food-grade Material

## TROUBLESHOOTING

Malfunction	Analysis	Solution
Not working	Low power	Click the button once to check power status. When the power is less than 25%, please charge it.
	Bottle not properly tightened to the base	Retighten until the arrow on the bottle is aligned with the switch (Refer to step 1 of use).
	Blades get stuck	Hold the blender upside down and double-click the switch to turn it on, then turn it back and shake gently
	Ingredients added are above the MAX line	Remove some ingredients until below the MAX line and use as usual.
	Worked many times marginally	Wait 20 minutes and then use it normally.
	Base and bottle are separated	The blender has security protection. If the base is separated from bottle, the blades will not rotate.

	Operation is incorrect	One-click to check the power, quick double-click to turn on.
	Not charged over a month	Please charge the blender at least once a month, otherwise the battery will be easily damaged.
Leakage	Ingredients added are above the MAX line	Remove some ingredients until below the MAX line and use as usual.
	Bottle not properly tightened to the base	Retighten until the arrow on the bottle is aligned with the switch (Refer to step 1 of use).

If the solutions above can't solve the problem, please scan the COKUNST after-sales QR to get help.

NINGBO NINHUA. SCM CO., LTD

ADD: 21 JIANGXIA ST., NINGBO 315000

P.R. of CHINA

### **After-Sale Service:**

[cokunstaftersale@gmail.com](mailto:cokunstaftersale@gmail.com)


[www.facebook.com/COKUNST.Official](https://www.facebook.com/COKUNST.Official)

[www.instagram.com/cokunst.official](https://www.instagram.com/cokunst.official)

Scan for Online Support



## Documents / Resources

	<a href="#">Cokunst PSB-4 Portable Lid Juice Extractor [pdf]</a> User Manual PSB-4 Portable Lid Juice Extractor, PSB-4, Portable Lid Juice Extractor, Lid Juice Extractor, Juice Extractor, Extractor
---	--

## References

- [User Manual](#)

📁 COKUNST

🔍 COKUNST, Extractor, Juice Extractor, Lid Juice Extractor, Portable Lid Juice Extractor, PSB-4, PSB-4 Portable Lid Juice Extractor

---

## Leave a comment

Your email address will not be published. Required fields are marked \*

Comment \*

Name

Email

---

Website

☐ Save my name, email, and website in this browser for the next time I comment.

**Post Comment**

**Search:**

**Search**

[Manuals+](#) | [Upload](#) | [Deep Search](#) | [Privacy Policy](#) | [@manuals.plus](#) | [YouTube](#)

This website is an independent publication and is neither affiliated with nor endorsed by any of the trademark owners. The "Bluetooth®" word mark and logos are registered trademarks owned by Bluetooth SIG, Inc. The "Wi-Fi®" word mark and logos are registered trademarks owned by the Wi-Fi Alliance. Any use of these marks on this website does not imply any affiliation with or endorsement.