



# Codnida Wireless WiFi Solar Powered Smart Camera User Manual

[Home](#) » [Codnida](#) » Codnida Wireless WiFi Solar Powered Smart Camera User Manual 

## Contents

- [1 Codnida Wireless WiFi Solar Powered Smart Camera](#)
- [2 PRODUCTS & PACKING LIST](#)
  - [2.1 Packing List](#)
  - [2.2 Quick Setup](#)
- [3 PHONE APP INSTALLATION](#)
  - [3.1 APP REGISTRATION](#)
- [4 WI-FI CONNECTION](#)
- [5 DEVICE SETTINGINSTALLATION](#)
- [6 SPECIAL NOTES!](#)
- [7 FAQ](#)
- [8 Documents / Resources](#)
- [9 Related Posts](#)

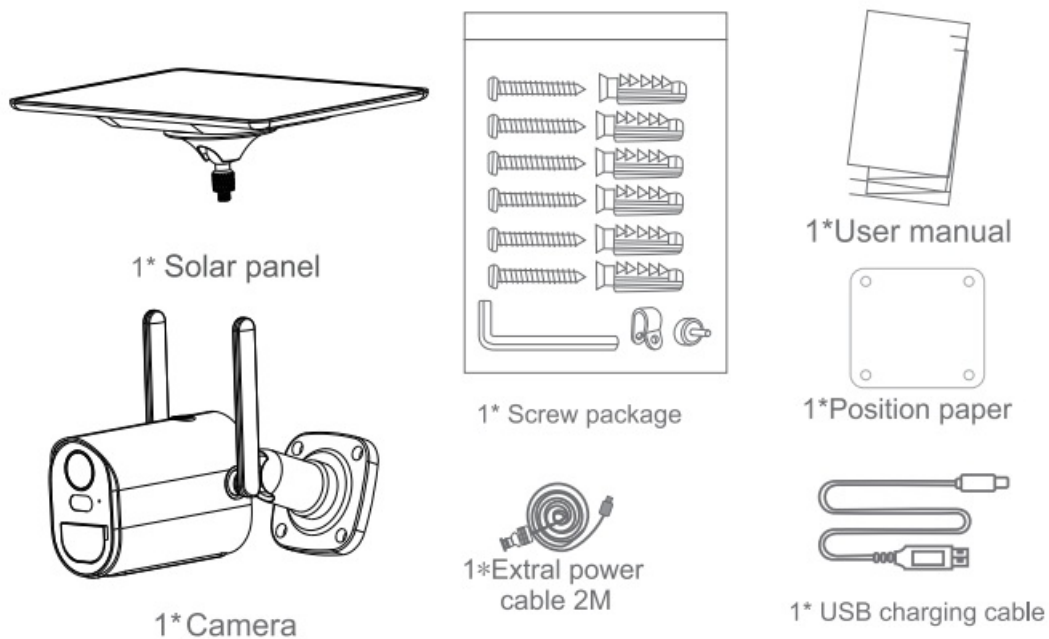


**Codnida Wireless WiFi Solar Powered Smart Camera**



## PRODUCTS & PACKING LIST

### Packing List

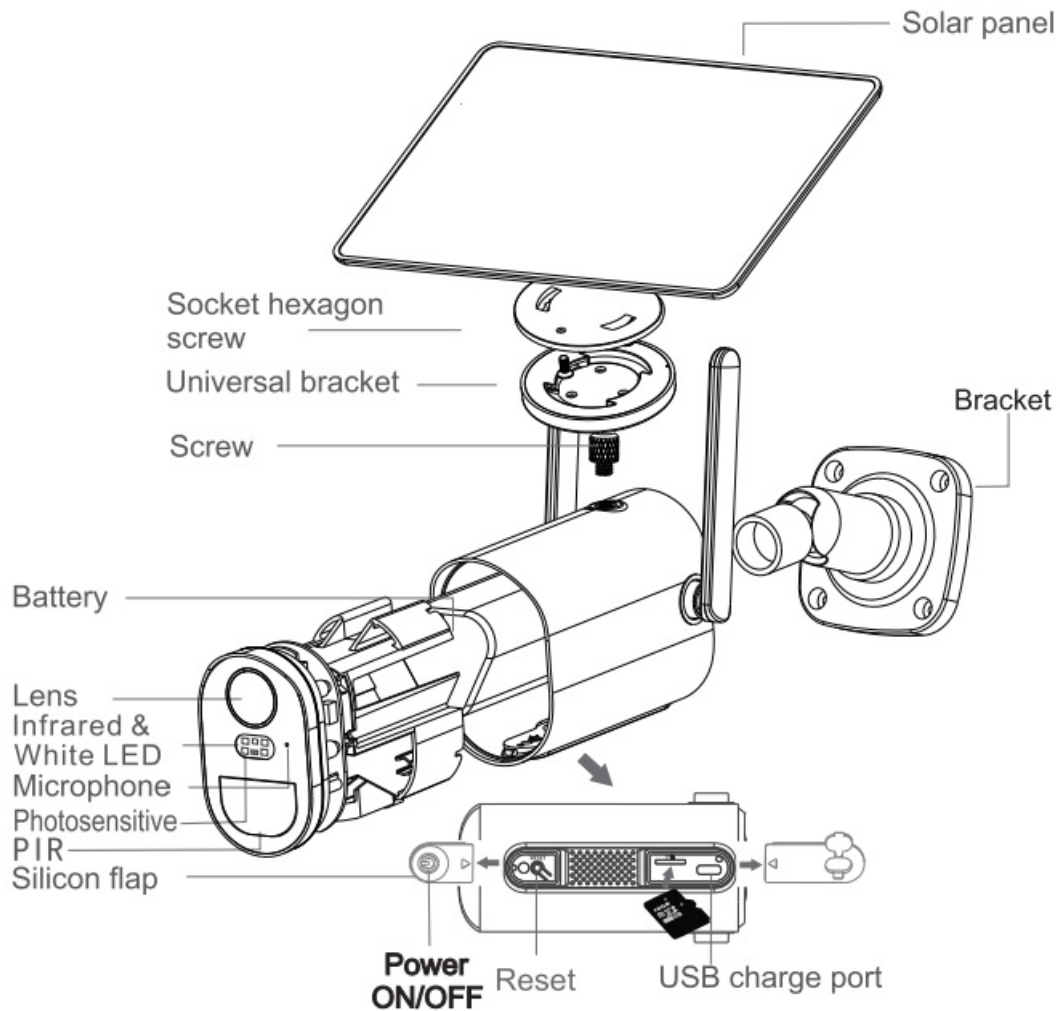


### Quick Setup

- Insert the USB cable of the solar panel to the “USB” Silicon Flap on the bracket base for battery charging.
- Press the Power switch to turn ON/OFF the camera,
- Wait the voice prompt step by step for pairing the camera with the APP.

### Note

- Before the first time to use the camera, make sure the camera has enough power. You can use the USB cable to fully charge the camera, or you can connect the solar panel to the camera and place the camera in the sun for two hours.
- If use the SD card and please insert it into the camera before turning on.
- After you turn on the camera, please close the silicon flap to avoid rain leakage.
- When pairing the devices, make sure your phone is connecting to the 2.4Ghz WiFi (Don't support 5G WiFi), and please keep the phone, camera and WiFi router within 30-100cm.



## PHONE APP INSTALLATION

Scan the following QR codes or search for "UBox" from the APP Store (for iOS devices) or Google Play Store (for Android smart phone) to download and install the APP.



UBox

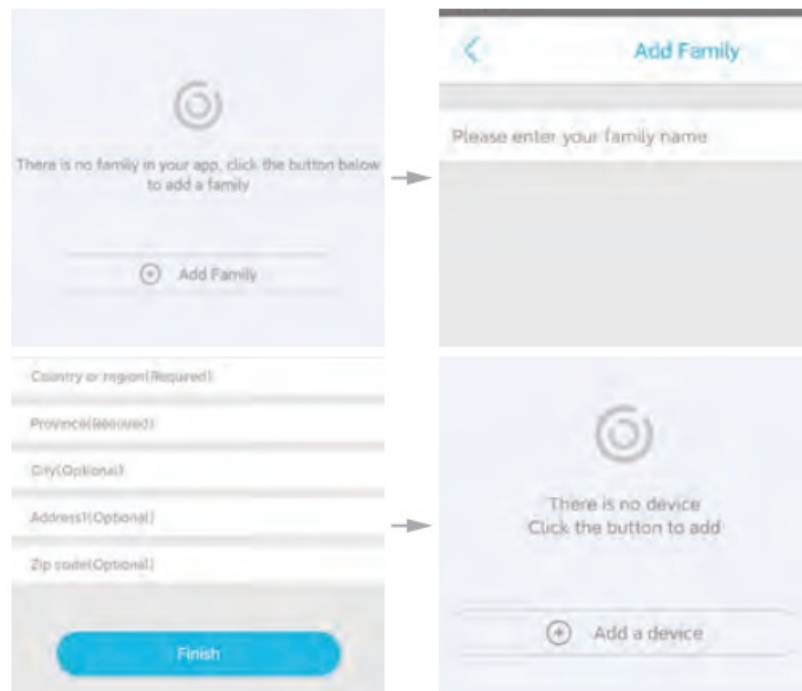
## APP REGISTRATION

- Open the app, input your email address then press “Register”.
- Check and select to agree the agreement then your email box will get a verification code. (For a better user experience, please allow to open all permissions to avoid missing any notifications from the app.)
- Input the “Verification code” and press “Next”.(If you not found the mail and you might find the code in your email spam box.)
- Set the login password and confirm the login password. Then press “Register” to next step.(For your password safety, the password requires more than 8 characters plus a combination of letters.)
- Enter your email address and input your login password, the press “Login”.

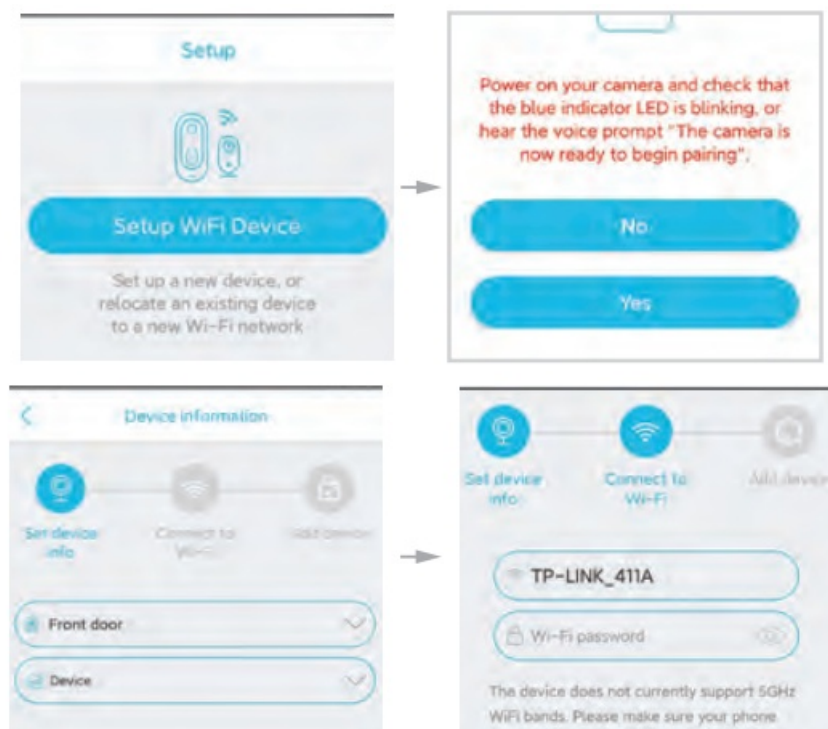


## WI-FI CONNECTION

- Press “Add Family” then set the room or position as per reminders.
- Enter your family name and the press “Next”.
- Input the necessary information just like Country, Province, then press “Done”.
  - Press “Add a device” to add a smart device.



- QR code configuration: Select the QR code configuration then the phone display a QR code. Use the lens of the camera to scan the QR code 10cm away from the phone.
- Select the family name or device location then press “Done”.
- The device will enter to the device list automatically. Setup success! The device is ready to use.



**Note About PIR Detection:**

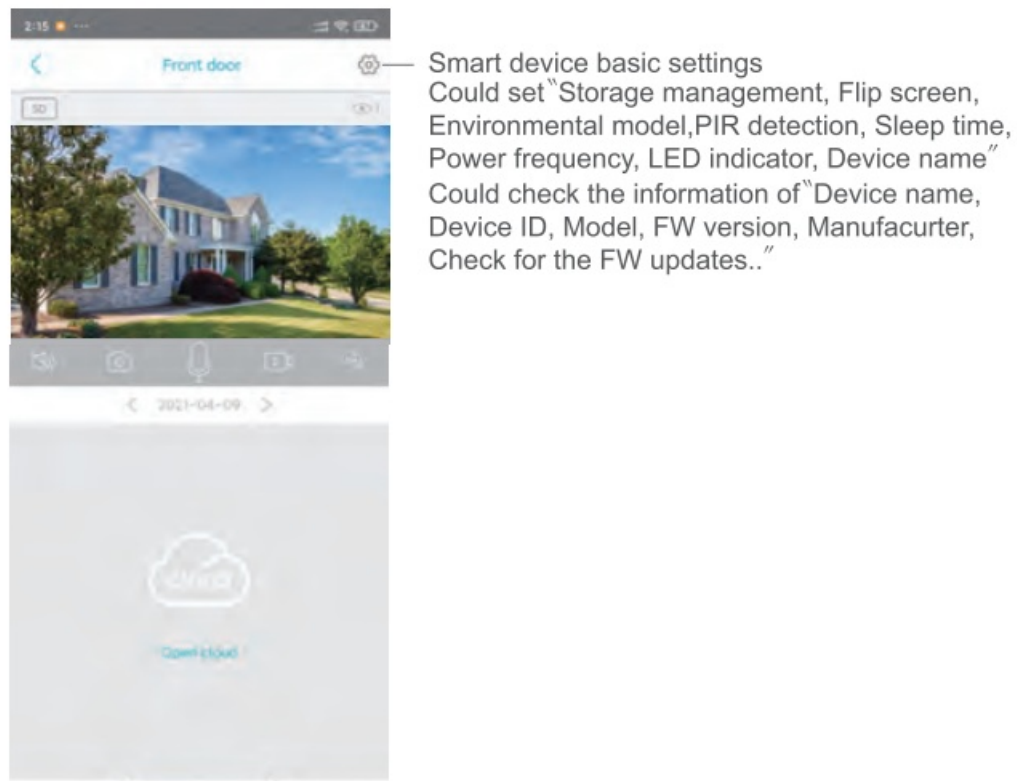
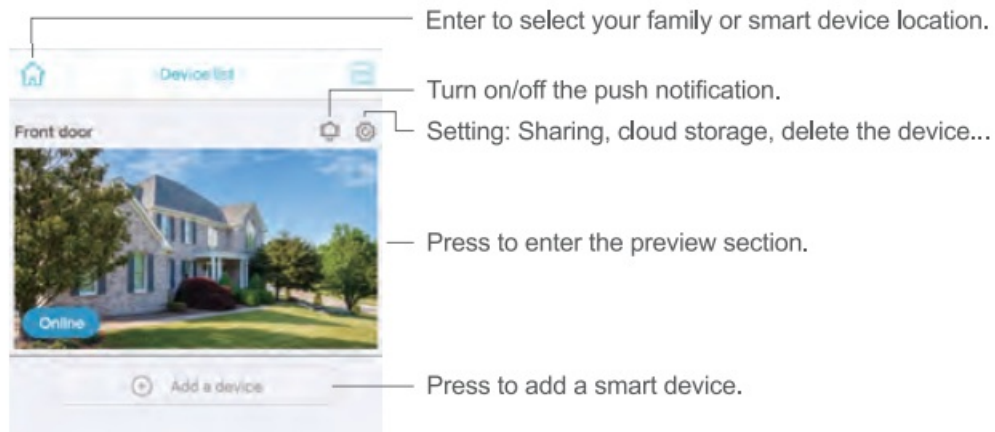
User can change the PIR detection sensitivity in device setting on the phone APP. We recommend to set sensitivity at "Disabled" or "Low" to reduce false alert and save the battery power. Disable: disabled PIR detection.

**Low:** Delay 7 seconds PIR detects a moving.

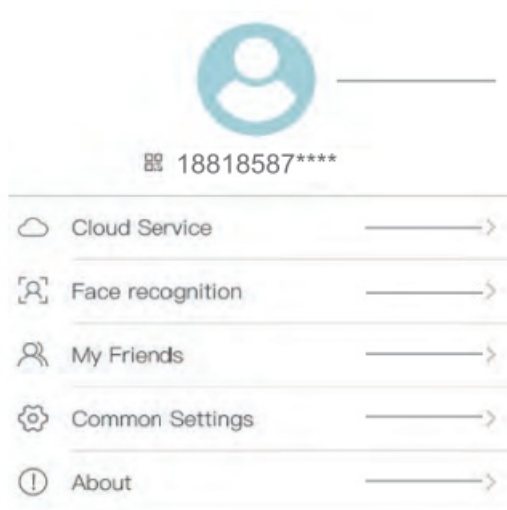
**Medium:** Delay 5 seconds PIR detects a moving.

**High:** Delay 1 seconds PIR detects a moving.

**DEVICE SETTING**







Check "my account" name and change password;

Check and purchase the Cloud storage;

Check and purchase the AI Cloud Facial Recognition;

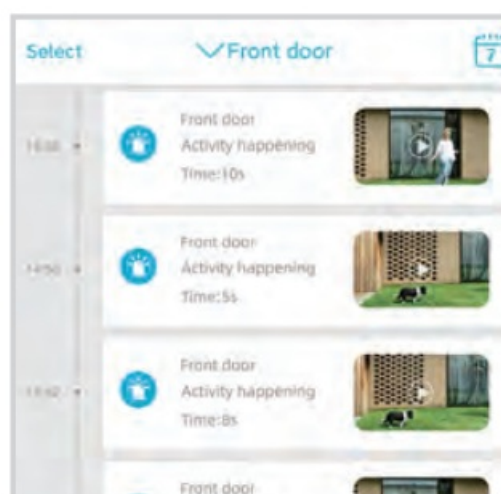
Check and add my friends list and permission;

Set the default voice and resolution for the devices;

Press to add a smart device



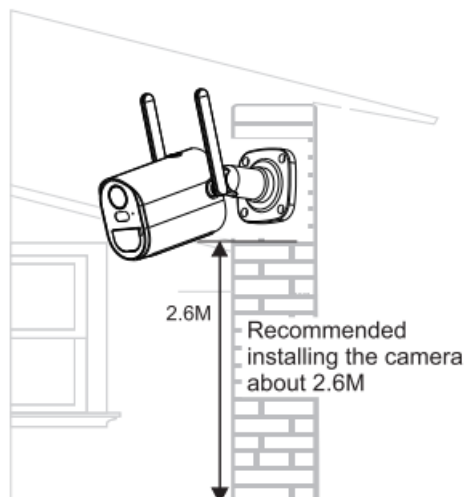
Click the "Calendar" icon on the right top corner, then choose the date to playback the voices from cloud storage.



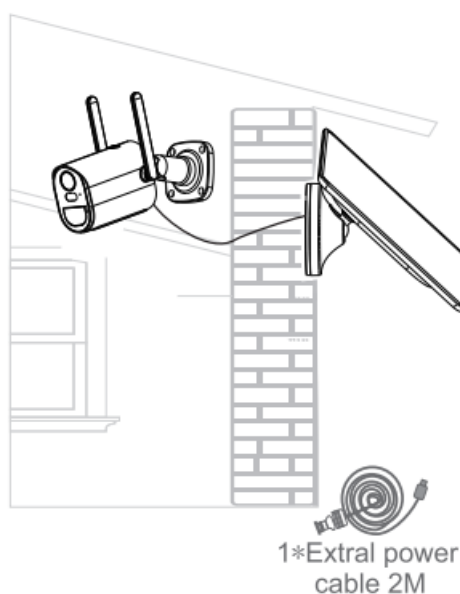
Choose the desired date to check all videos from the cloud.

## INSTALLATION

### Intergrated installation



### Separated installation





### Separated installation:

Accessories need(not standard configuration). The extra power cable is 2m, please place the camera and the solar panel in the range.

## SPECIAL NOTES!

- The device is equipped with a rechargeable lithium battery. The battery life will be affected by the device wake-up time and the number of wake-ups. Therefore, if the PIR sensor alarm detection function is used in an environment with a lot of people, it is recommended to set the low sensitivity to reduce device wake-up and call times to extend battery life. When the battery is low, please charge the battery immediately.
- Make sure the device is placed close to the Wi-Fi router, the distance is within 100m. If there has to be thick or insulated objects between the device and the Wi-Fi router, which may lead to weak Wi-Fi signal, please make sure the Wi-Fi signal is in good level before you start using the device.
- It is a delicate device with low power consumption design. Every time the device is awakened and will work for few seconds. After that, the device will enter standby mode to save power. You can set the work time in the app settings.
- Please open the app's self-starting function in your phone to receive push messages.
- This device provides one month of free cloud storage services. If you need to continue using value-added services after the trial period expires, you need to purchase them in the app.

## FAQ

### • What should I do, the camera is offline?

Check if the camera has power or the charging cable correctly connect the solar panel and the camera. Restart the power and restart the camera.

Check if the distance between the camera and the wifi router is within 100m.


### • How to do if don't connect the camera to phone?

Check if your phone is connecting to 2.4G wifi and you can reset the camera then connect again.

### • Why can't the camera recognize the SD card?

- This camera supports FAT32 format Class 6, Class 10 SD card, max supports 128GB.
- If you insert the SD card into the camera after the camera is turned on, the camera may not be able to recognize the SD card. Please turn off the camera, then insert the SD card into it, then power on the camera again and it will automatically recognize the SD card after restarting.

## Documents / Resources

	<a href="#">Codnida Wireless WiFi Solar Powered Smart Camera</a> [pdf] User Manual camapp365, Wireless WiFi Solar Powered, Smart Camera, WiFi Solar Powered
---	--