



# CODELOCKS CL160 Easy Code Mechanical Deadlock Silver Instruction Manual

[Home](#) » [CODELOCKS](#) » CODELOCKS CL160 Easy Code Mechanical Deadlock Silver Instruction Manual 

## Contents

- [1 CODELOCKS CL160 Easy Code Mechanical Deadlock Silver](#)
- [2 Product Information](#)
- [3 Product Usage Instructions](#)
- [4 Contents](#)
- [5 Tools required for installation:](#)
- [6 Special Notes](#)
- [7 Check the Hand of Your Door](#)
- [8 Apply the Template](#)
- [9 Latch Support Post](#)
- [10 Disable Hold Open Feature](#)
- [11 Positioning the Spindle](#)
- [12 Fixing the Lock](#)
- [13 Fitting the Strike Plate](#)
- [14 Documents / Resources](#)
- [15 Related Posts](#)



**CODELOCKS CL160 Easy Code Mechanical Deadlock Silver**



## Product Information

The CL160 is a lock designed for installation on doors. It includes features such as a latch, strike plate, and spindle. The lock is suitable for both right-handed and left-handed doors.

## Product Usage Instructions

1. Before starting the installation process, familiarize yourself with the instructions provided.
2. Check the hand of your door to determine if it is right-handed or left-handed. To do this, view the door from the outside and observe the position of the hinges. If the hinges are on the right, the door is right-handed. If the hinges are on the left, the door is left-handed.
3. Apply the template provided with the lock to the door. Ensure it is positioned correctly and fix it in place using tape.
4. Position and fix the latch support post according to the instructions provided.
5. Disable the hold open feature by lifting out the snib block, flipping it over, and reseating it. Refit the fixing plate, but do not fit the blue handing screw.
6. Position the spindle according to the instructions.
7. Fix the lock onto the door using the appropriate screws and fasteners.
8. Fit the strike plate onto the surface of the frame using one screw only. Close the door and ensure that the latch bolt enters the aperture easily without too much play. Once satisfied, draw around the final position of the strike plate, remove it, and cut a 1 mm (1/16) rebate to enable it to fit flush. Re-fix the strike plate with both screws.

For more detailed information and visual instructions, please refer to the [CL160 Installation Instructions](#) provided by Codelocks Support Portal.

## Contents

1. Front plate

2. Backplate
3. Neoprene seals x 2
4. Spring loaded spindle
5. Latch 60mm (2 3/8") backset
6. Strike plate
7. Wood screws x 4 – Use with
8. Latch & strike plate
9. 3ams or polis
10. 30mm (1 1/8") bolts x2
11. 45mm (1 3/8") bolts x 2
12. Fixing posts x 2
13. Code card
14. Code change tool

### **Tools required for installation:**

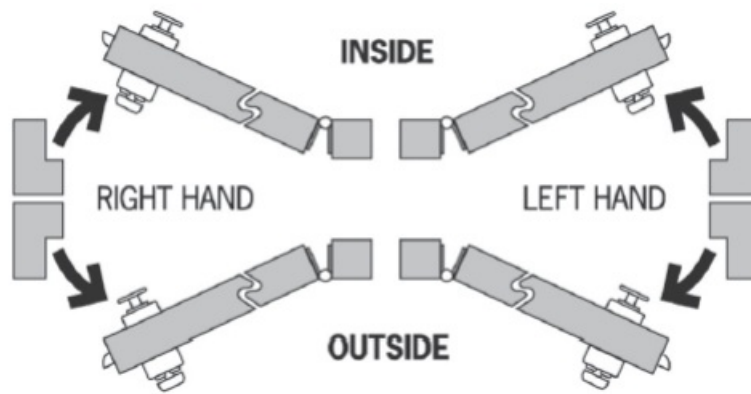
- Power drill
- Drill bits 10mm (3/8") 13mm (1/2") 25mm (1")
- Tape measure
- Stanley knife
- Adhesive tape
- Pencil

### **Special Notes**

You are advised to familiarise yourself with the instructions before starting work.

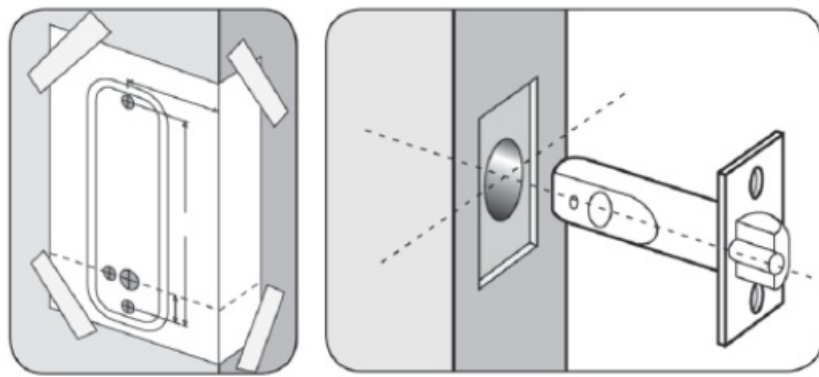
- As standard, locks are supplied as a “hold open’ function with a snib on the back plate. This enables the latch bolt to be held open when required.
- When using the ‘hold open’ function please note that the back plate is fitted with a blue screw to stop the handle moving in the wrong direction. The screw should be in the left-hand hole for a right-hand door or the right-hand hole for a left-hand door.
- To disable the ‘hold open’ see Note 4 – Disable ‘hold open’ function.
- Make sure that the lever handle of the back plate moves freely. If your lock is a ‘hold open’ model then check that the snib will engage and hold the handle in the ‘latch open’ position.
- Check that the latch bolt moves freely by pressing at the end and also by turning the spindle in the latch cam.
- Please ensure you fold the template on the correct backset line, 60mm (2 3/8") is standard, and 50mm (2") and 70mm (2 3/4") latches are available. Ensure you drill the hole in the center of the door edge to the correct depth to accept your chosen latch.

### **Check the Hand of Your Door**



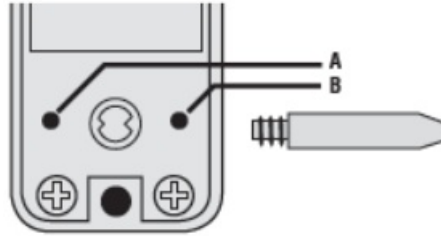
Viewed from the outside, a door is right-handed if the hinges are on the right, and left-handed if the hinges are on the left.

## Apply the Template



- Crease the template along the 'fold along the door edge' dotted line that suits your latch backset, and tape it to the door.
- Mark the 13mm (1/2") hole and the 3 x 10mm (3/8") holes. Mark the center line of the latch in the middle of the door edge. Now apply the template to the other side of the door, aligning it with your first mark in the middle of the door edge.
- Mark the 4 holes again. Keeping the drill level and square to the door, drill holes from both sides to avoid splintering out of the door face. Positioning and fixing the latch
- Mark a central point on the 'center line of latch' on the door edge.
- Mark the depth of 85mm (3 3/8") on the drill bit with tape to act as a visible depth limit. Drill a 25mm (1") hole, 85mm (3 3/8") deep, keeping the drill level and square to the door.
- Insert the latch into the hole, and with the edges parallel to the door, draw around the faceplate.
- Remove the latch. Score the pencil line with a Stanley knife to avoid splitting prior to chiseling. Chisel a 3mm (1/8") rebate to fit the latch face flush to the door edge.
- Fix the latch with the wood screws, with the bevel towards the door frame.

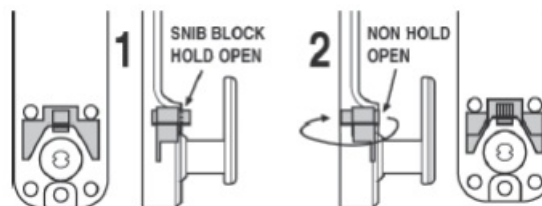
## Latch Support Post



- Fit the Latch Support Post in the back of the front plate:
  - Hole A for a right-hand door
  - Hole B for a Left Hand Door
- Fit the Latch Support Post in the back of the front plate: Hole A for a Right Hand Door. Hole B for a Left Hand Door.

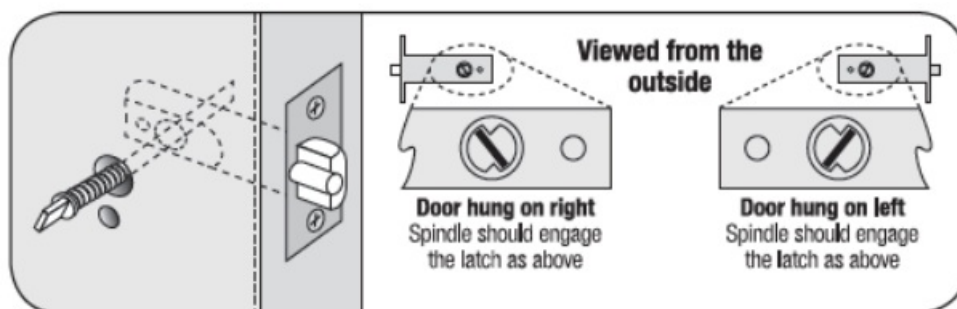
## Disable Hold Open Feature

- If required the hold open feature can be disabled as follows: Remove fixing plate by removing the four fixing screws and blue handing screw.



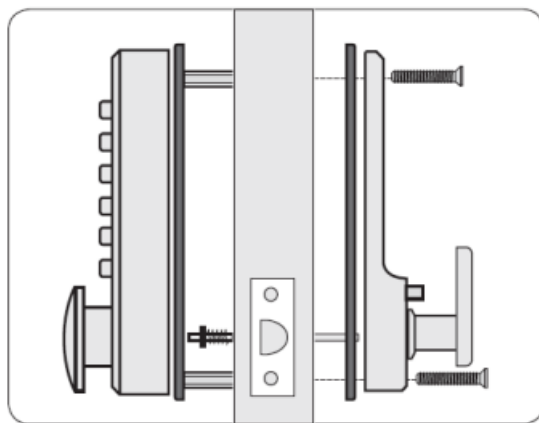
1. Lift out the snib block.
2. Flip over and repeat. Refit the fixing plate.  
Do not fit the blue handing screw.

## Positioning the Spindle



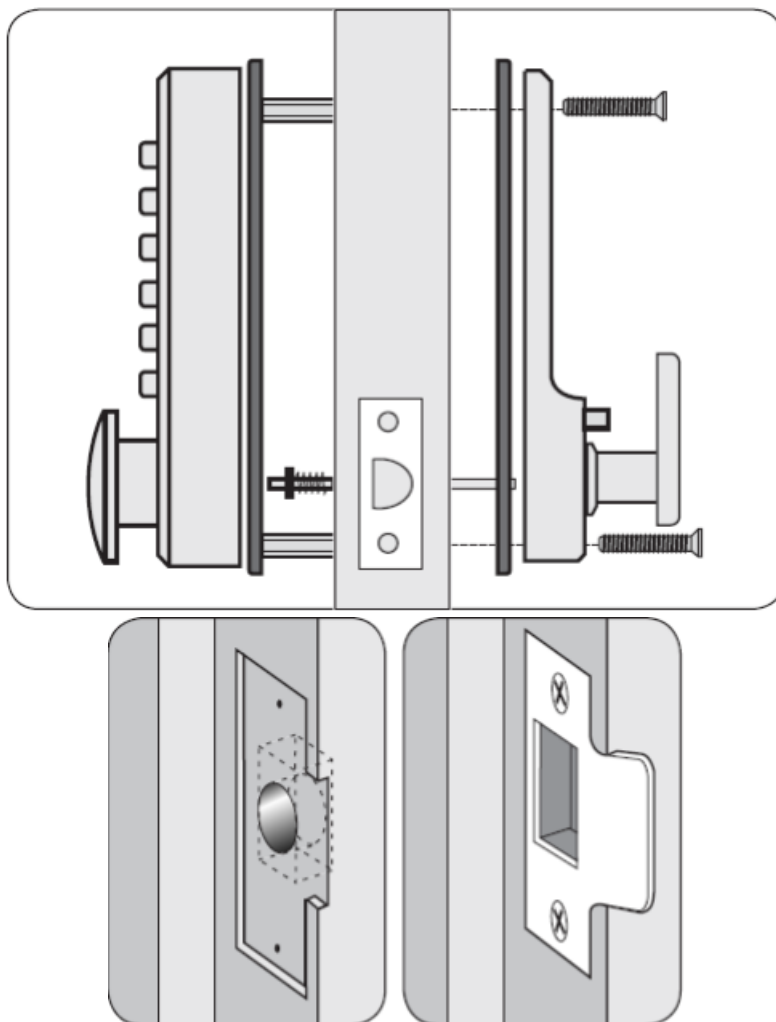
- The spring-loaded spindle will fit doors between 35mm (1 3/8") and 60mm (2 3/8") thick. For doors less than 50mm (2") thick break off the 15mm (5/8") section at the end of the spindle. The spring keeps the spindle firmly engaged in the outside handle when the lock is assembled on the door.
- Insert the spindle, with the spring on the code side, through the 13mm (1/2") hole in the door, and make sure that it engages the latch correctly for the hand of the door (see inset diagram).

## Fixing the Lock

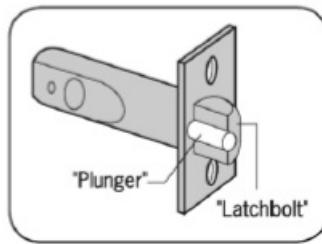


- Select the correct pair of fixing bolts to suit your door thickness.
  - Secure the fixing posts into the back of the keypad.
  - Hold the front plate and the back plate, with the seals, onto the door with the spindle in position.
  - Using the fixing bolts screw everything together through the top and bottom holes of the back plate. Before final tightening make sure that the lock is vertical, and test the mechanism to ensure that it is all moving easily.
- DO NOT CLOSE THE DOOR UNTIL YOU ARE SURE THAT THE CODE WORKS
- DO NOT over-tighten the fixing bolts as this may cause distortion and lead to poor operation.

## Fitting the Strike Plate



**NB** The plunger beside the latch bolt deadlocks the latch bolt and protects it against manipulation. IT MUST NOT enter the strike plate aperture when the door is closed.



- Ensure that there are no obstructions to prevent the door closing properly into its frame, such as litter trapped in the hinge side.
- Position the strike plate on the door frame so that the aperture lines up with the flat of the latch bolt, NOT THE PLUNGER.
- Draw around the aperture of the strike plate. Chisel out the aperture 15mm (58") deep to receive the latch bolt. Fix the strike plate to the surface of the frame with one screw only. Close the door and ensure that the latch bolt enters the aperture easily, and is held without too much 'play'. When satisfied, draw around the final position of the strike plate, remove it, and cut a 1mm (116") rebate to enable it to fit flush. Re-fix the strike plate with both screws


I-CL160ML-v1:0218

© 2019 Codelocks Ltd. All rights reserved.

<https://desk.zoho.eu/portal/codelocks/en/kb/articles/cl160-installation-instructions>

---

## Documents / Resources

|   |  |
|---|--|
|  | <p><a href="#">CODELOCKS CL160 Easy Code Mechanical Deadlock Silver</a> [pdf] Instruction Manual CL160 Easy Code Mechanical Deadlock Silver, CL160, Easy Code Mechanical Deadlock Silver, Code Mechanical Deadlock Silver, Mechanical Deadlock Silver, Deadlock Silver, Silver</p> |
|---|--|