



# CODELOCKS CL100 Mechanical Deadlock With Surface Deadbolt Instruction Manual

[Home](#) » [CODELOCKS](#) » CODELOCKS CL100 Mechanical Deadlock With Surface Deadbolt Instruction Manual 

## Contents

- [1 CODELOCKS CL100 Mechanical Deadlock With Surface Deadbolt](#)
- [2 Product Information](#)
- [3 Product Usage Instructions](#)
- [4 CONTENTS](#)
- [5 Tools required for installation](#)
- [6 SPECIAL NOTES](#)
- [7 CHECK THE HAND OF YOUR DOOR](#)
- [8 OUTSIDE KNOB LOCKING ACTION](#)
- [9 POSITIONING THE LOCK](#)
- [10 FIXING THE LOCK](#)
- [11 Documents / Resources](#)
  - [11.1 References](#)
- [12 Related Posts](#)



**CODELOCKS CL100 Mechanical Deadlock With Surface Deadbolt**



## Product Information

- The CL100/CL200 is a surface deadbolt lock designed for installation on doors. It comes with various components including a front plate, back plate, neoprene seals, packaging pieces, spring-loaded spindle, mortice keeper, surface keeper, surface keeper packing pieces, wood screws, tweezers, fixing bolts, tumblers, code card, and 2 keys for key override options.
- The lock is suitable for both right-handed and left-handed doors. A door is considered right-handed if the hinges are on the right when viewed from the outside, and left-handed if the hinges are on the left.
- The lock allows for outside knob locking action without using the code.
- Proper positioning and fixing of the lock are essential for installation.
- The product user manual/instructions can be found [here](#).

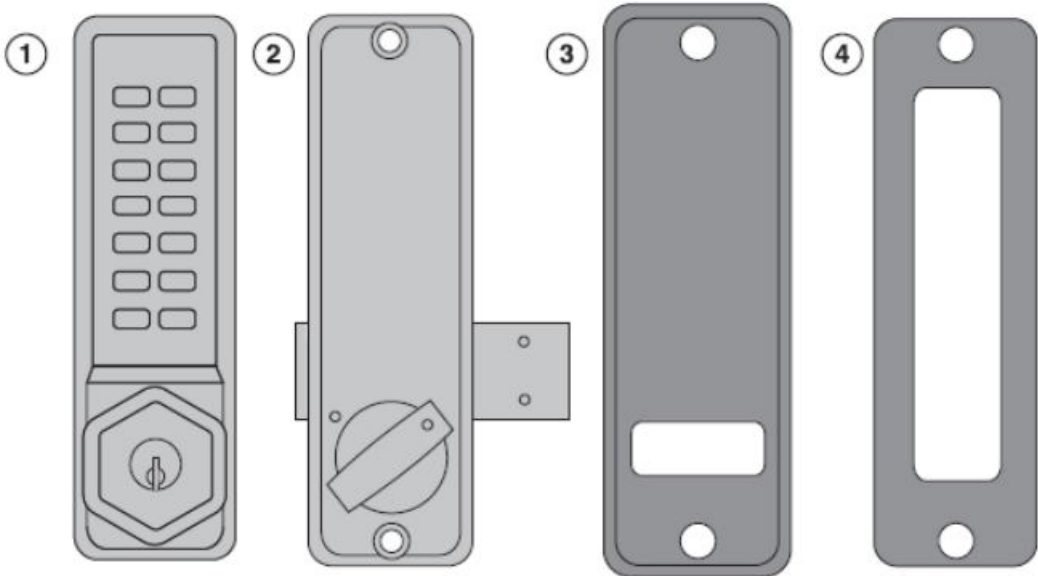
## Product Usage Instructions

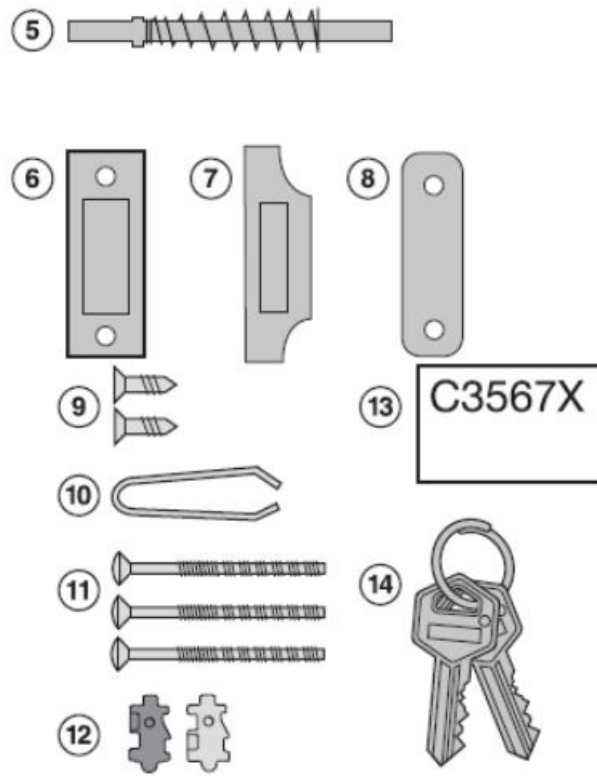
1. Check the hand of your door to determine if it is right-handed or left-handed.
2. To enable the locking of the bolt from the outside without using the code, follow the instructions provided in the manual.
3. Position the lock correctly according to the instructions.
4. Fix the lock in place using the provided fixing bolts. Start with the top fixing bolt and screw everything together.
5. Fit the keeper using the wood screws and follow the instructions in the manual.

## CONTENTS

CL100 CL200

1	Front Plate (Key override option shown)	✓	✓
2	Back plate (bolt is packed separately)	✓	✓
3	Neoprene seals x 2	✓	✓
4	Packaging pieces x 2	✓	✓
5	Spring loaded spindle	✓	✓
6	Mortice keeper	✓	✓
7	Surface keeper	✓	✓
8	Surface keeper packing pieces x 1	✓	✓
9	Wood screws x 2 (to use with keeper)	✓	✓
10	Tweezers	✓	✓
11	Fixing bolts - 3 supplied (spare x 1)	✓	✓
12	Tumblers (spare x 2)	✓	✓
13	Code card	✓	✓
14	2 keys - key override options only	✓	✓





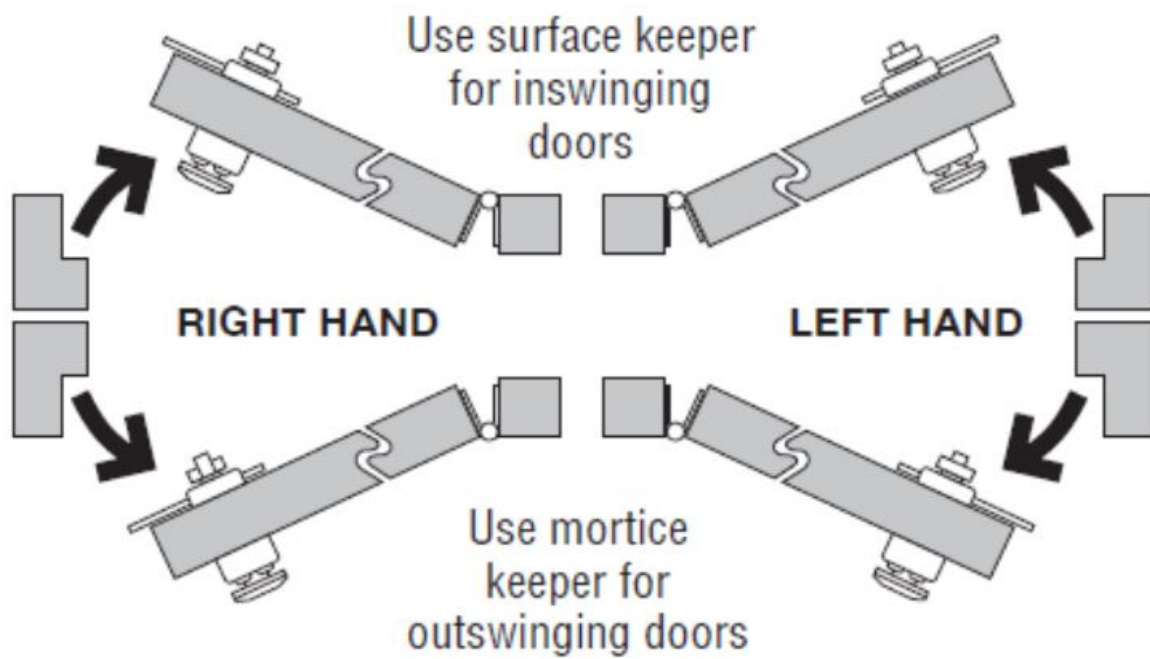
## Tools required for installation

- Power Drill
- Drill bits
- 10mm (3/8") & 13mm (1/2")
- Bradawl
- Phillips screwdriver size 2
- Chisel – maximum 15mm (3/4")
- Tape measures
- Pendley knit

## SPECIAL NOTES

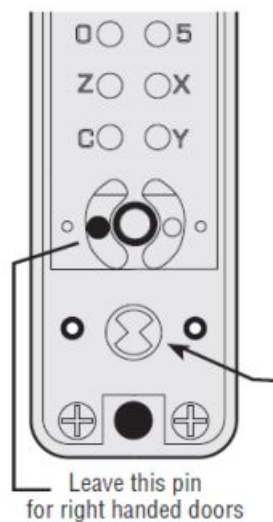
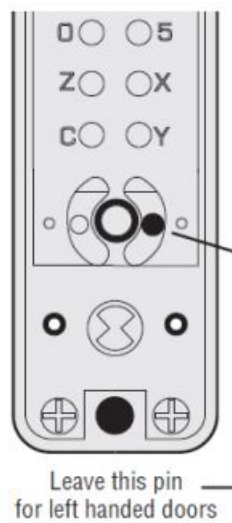
- Press the code according to the code card and the knob should then turn, in either direction, once only, and return easily under spring pressure.
- From inside the door, the bolt can be freely locked and unlocked using the knob. From outside the code is required both to lock and to unlock the bolt. If you would like to be able to LOCK your door from outside WITHOUT using the code then follow instruction 2.
- If you intend to change the code then, if it is convenient, you should do it before installing the lock. See the code change instructions in the separate leaflet.
- Note that the lock is supplied as standard with a bolt that projects 40mm (1 9/16") from the side of the lock. A shorter bolt which projects 20mm (1 3/16") is available by reversing the bolt.

## CHECK THE HAND OF YOUR DOOR



Viewed from outside, a door is right-handed if the hinges are on the right, and left-handed if the hinges are on the left.

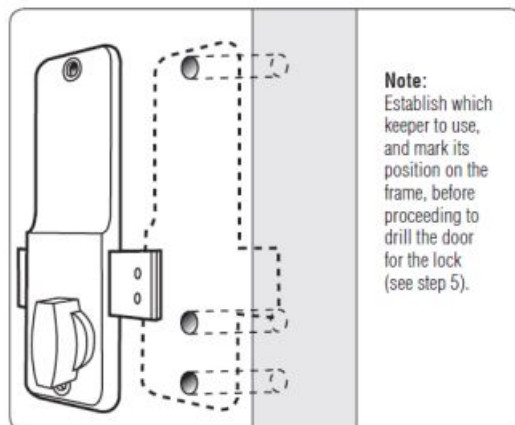
## OUTSIDE KNOB LOCKING ACTION



### To enable **LOCKING** of the bolt from outside **WITHOUT** using the code:

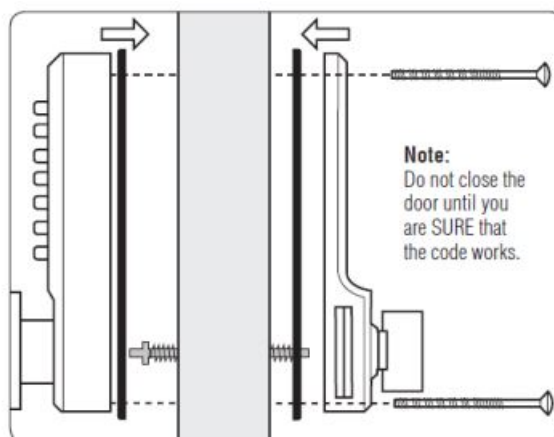
- Press the C button to reset the chamber and place the front plate on a flat surface with the buttons down.
- Remove the code chamber plate held in place with the two red screws.
- With the tweezers remove the right-hand pin for right-handed doors, or the left-hand pin for left-handed doors.
- Replace the cover plate.
- The outside knob will not feel loose and turn freely in one direction and will require the code to be used before it will turn in the other direction.

## POSITIONING THE LOCK



- Remove the inside cover plate from the back plate, and install the deadbolt according to the hand of your door. Note that the standard bolt projects 40mm (1 9/16") to the locking side. A shorter bolt which projects 20mm (1 3/16") is available by reversing the bolt.
- Set the back plate with the knob in the vertical position and hold it to the door with one end of the bolt against the frame where the keeper will be fitted (see step 5).
- Mark the position of the top fixing hole, and then using one of the packing pieces as a template mark the position of the lower fixing hole and the hole for the spindle. Drill 10mm (3/8") holes for fixing bolts and 13mm (1/2") hole for spindle.

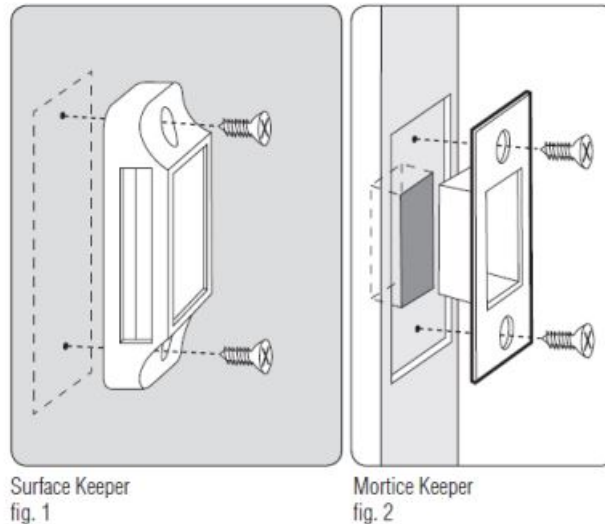
## FIXING THE LOCK



- The spring-loaded spindle will fit doors between 35mm (1 3/8") and 60mm (2 3/8") thick.

- For doors less than 50mm (2") thick break off the 15mm (5/8") section at the end of the spindle.
- For doors more than 60mm (2 3/8") thick ring the helpline for advice.
- The spring keeps the spindle firmly engaged in the outside handle when the lock is assembled on the door.
- Cut the fixing bolts to suit the door thickness, the length of bolts measured beneath the bolt head should be door thickness plus 15mm (5/8").
- Use the pliers' cutting jaws to crimp strongly several times around the bolt. The surplus end should now break off easily.
- Hold the front plate and the back plate, with the neoprene seals in place, onto the door with the spindle in position. Using the top fixing bolt first screw everything together.

## FITTING THE KEEPER

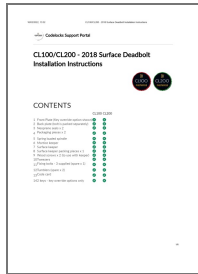


- First, select the appropriate keeper for your frame.
- Position the keeper on the frame so that it lines up with the deadbolt and mark the appropriate holes.
- If you are using the Surface Keeper simply screw it into place (see Fig. 1). Use the packing pieces as required.
- The Mortice Keeper will require cutting a small recess (see Fig. 2).

**CL100/200SD-v1:0218**

© 2019 Codelocks Ltd. All rights reserved.

<https://desk.zoho.eu/portal/codelocks/en/kb/articles/cl100-cl200-2018-surface-deadbolt-installation-instructions-13-6-2019>

	<p><a href="#"><b>CODELOCKS CL100 Mechanical Deadlock With Surface Deadbolt</b></a> [pdf] Instruction Manual CL100, CL200, CL100 Mechanical Deadlock With Surface Deadbolt, CL100, Mechanical Deadlock With Surface Deadbolt, Deadlock With Surface Deadbolt, Surface Deadbolt, Deadbolt</p>
--	--

References

- [\*\*Z\*\*desk.zoho.eu/portal/codelocks/en/kb/articles/cl100-cl200-2018-surface-deadbolt-](https://desk.zoho.eu/portal/codelocks/en/kb/articles/cl100-cl200-2018-surface-deadbolt-user-manual)
- [User Manual](#)