



[Home](#) » [Code 3](#) » **CODE 3 C3900 BLAZER Siren Speaker Installation Guide** 



Contents [[hide](#)]

- [1 CODE 3 C3900 BLAZER Siren Speaker](#)
- [2 Specifications](#)
- [3 Installation and Mounting](#)
- [4 Replacement Parts and Accesories](#)
- [5 Troubleshooting](#)
- [6 Warranty](#)
- [7 Documents / Resources](#)
 - [7.1 References](#)
- [8 Related Posts](#)



CODE 3 C3900 BLAZER Siren Speaker



IMPORTANT! Read all instructions before installing and using. Installer: This manual

must be delivered to the end user.

WARNING! Failure to install or use this product according to manufacturer's recommendations may result in property damage, serious injury, and/or death to those you are seeking to protect!

Do not install and/or operate this safety product unless you have read and understood the safety information contained in this manual.

1. Proper installation combined with operator training in the use, care, and maintenance of emergency warning devices are essential to ensure the safety of emergency personnel and the public.
2. Emergency warning devices often require high electrical voltages and/or currents. Exercise caution when working with live electrical connections.
3. This product must be properly grounded. Inadequate grounding and/or shorting of electrical connections can cause high current arcing, which can cause personal injury and/or severe vehicle damage, including fire.
4. Proper placement and installation is vital to the performance of this warning device. Install this product so that output performance of the system is maximized and the controls are placed within convenient reach of the operator so that they can operate the system without losing eye contact with the roadway.
5. Do not install this product or route any wires in the deployment area of an air bag. Equipment mounted or located in an air bag deployment area may reduce the effectiveness of the air bag or become a projectile that could cause serious personal injury or death. Refer to the vehicle owner's manual for the air bag deployment area. It is the responsibility of the user/operator to determine a suitable mounting location ensuring the safety of all passengers inside the vehicle particularly avoiding areas of potential head impact.
6. It is the responsibility of the vehicle operator to ensure daily that all features of this product work correctly. In use, the vehicle operator should ensure the projection of the warning signal is not blocked by vehicle components (i.e., open trunks or compartment doors), people, vehicles or other obstructions.
7. The use of this or any other warning device does not ensure all drivers can or will observe or react to an emergency warning signal. Never take the right-of-way for granted. It is the vehicle operator's responsibility to be sure they can proceed safely

before entering an intersection, drive against traffic, respond at a high rate of speed, or walk on or around traffic lanes.

8. This equipment is intended for use by authorized personnel only. The user is responsible for understanding and obeying all laws regarding emergency warning devices. Therefore, the user should check all applicable city, state, and federal laws and regulations. The manufacturer assumes no liability for any loss resulting from the use of this warning device.

Specifications

| | | |
|-----------------------|-------------|-----------------|
| Size: | FGs # | overall dims |
| | FGs # | overall dims |
| Weight: | FGs # | product weight |
| | FGs # | product weight |
| Input Voltage: | | product voltage |
| Input Current: | | startup current |
| | | current @ power |
| | | max current |
| Flash Rate: | First Mode | cycles/min |
| | Second Mode | cycles/min |

| | |
|----------------------|----------------|
| Output Power: | joules – mode |
| | joules – mode |
| Temp. Range: | -30°C to 50°C |
| | -22°F to 122°F |

Installation and Mounting

1. Consult the factory service manual to remove vehicle front fascia.
2. Locate and remove factory bolts from driver side bumper mount. See Figure 1.
3. Mount desired speaker onto desired bracket using supplied fasteners.
4. Position the bracket in front of the bumper mount. See Figure 2.

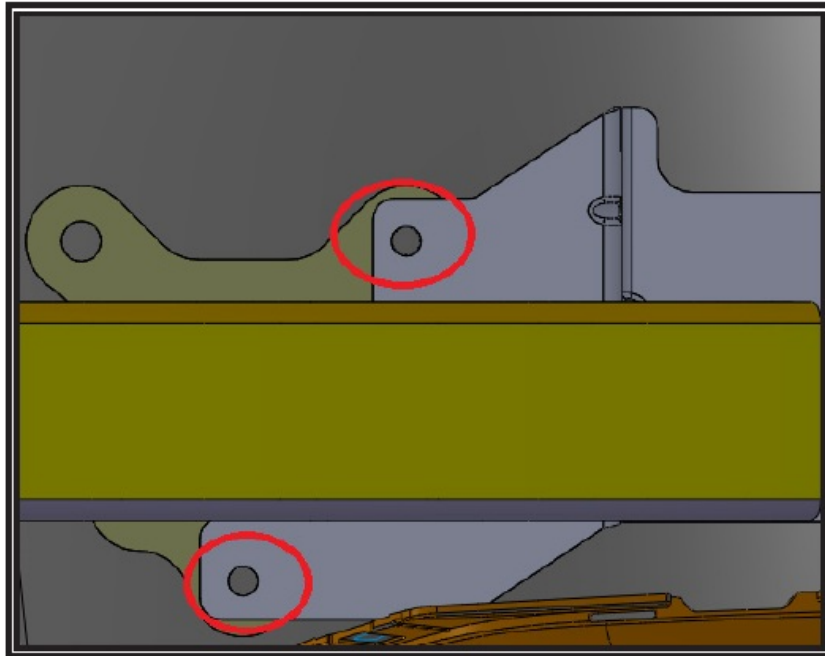


Figure 1

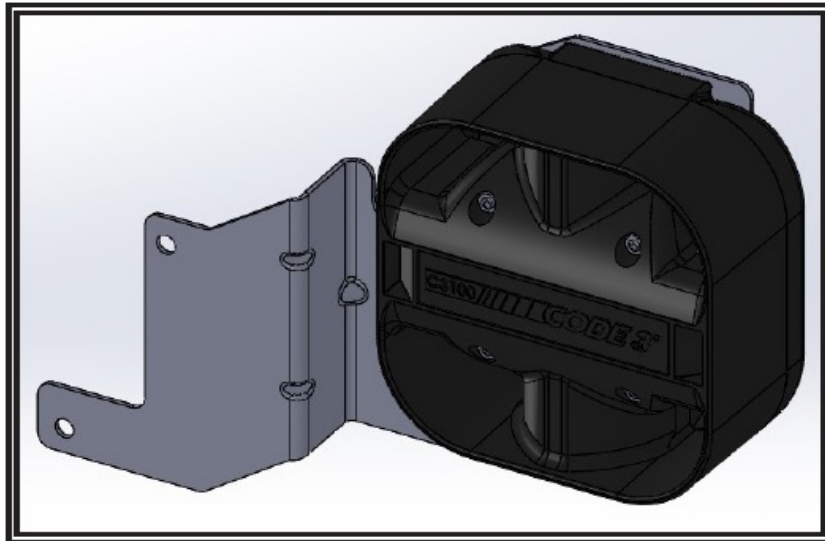


Figure 2

5. Mount the bracket using removed vehicle hardware onto the vehicle. See Figure 3*.
6. (For dual speaker applications) Repeat steps 2-4 to install speaker onto opposite side of vehicle.

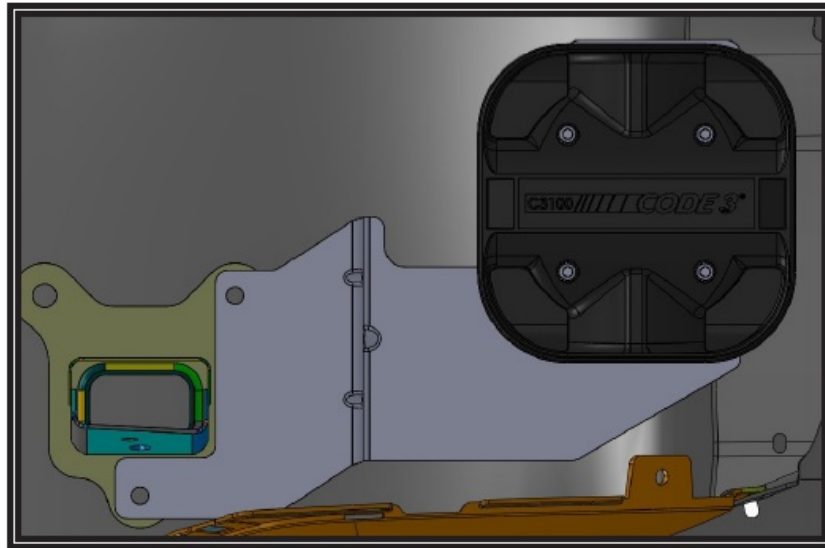


Figure 3

*Features have been removed from the photo to better show location of the installation

Replacement Parts and Accesories

All replacement parts and accessories pertaining to the product will be placed in a chart with their description and part numbers. Below is an example of a Replacement/Accessories chart.

| Description | Part No. | | |
|----------------------------------|-----------------|----------------------------------|---------|
| Flash Tube | R6501FT | Branch Cover (for use with 6750) | A6070BG |
| Lens, 4" (replacement for 6750P) | R6050LX* | Dust Cover (for use with 6750) | A6050DC |
| Lens, 6" (replacement for 6770) | R6070LX* | Dust Cover (for use with 6750) | A6070DC |

*where (X) indicates color:A = Amber

B = Blue

C = Clear

G = Green

R = Red

Troubleshooting

In this section, a list of simple problems that may occur from poor connections to transit damage and solutions to those problems will be provided by the Project Manager or CR Originator. Various warning boxes will need to be placed in this section. You can find a repository of frequently used warning boxes at the end of this manual.

Warranty

Manufacturer Limited Warranty and Limitation of Liability:

Manufacturer warrants that on the date of purchase, this product will conform to Manufacturer's specifications for this product (which are available from the Manufacturer upon request). This Limited Warranty extends for sixty (60) months from the date of purchase.

DAMAGE TO PARTS OR PRODUCTS RESULTING FROM TAMPERING, ACCIDENT, ABUSE, MISUSE, NEGLIGENCE, UNAPPROVED MODIFICATIONS, FIRE OR OTHER HAZARD; IMPROPER INSTALLATION OR OPERATION; OR NOT BEING MAINTAINED IN ACCORDANCE WITH THE MAINTENANCE PROCEDURES SET FORTH IN MANUFACTURER'S INSTALLATION AND OPERATING INSTRUCTIONS VOIDS THIS LIMITED WARRANTY.

Exclusion of Other Warranties:

MANUFACTURER MAKES NO OTHER WARRANTIES, EXPRESSED OR IMPLIED. THE IMPLIED WARRANTIES FOR MERCHANTABILITY, QUALITY OR FITNESS FOR A PARTICULAR PURPOSE, OR ARISING FROM A COURSE OF DEALING, USAGE OR TRADE PRACTICE ARE HEREBY EXCLUDED AND SHALL NOT APPLY TO THE PRODUCT AND ARE HEREBY DISCLAIMED, EXCEPT TO THE EXTENT PROHIBITED BY APPLICABLE LAW. ORAL STATEMENTS OR REPRESENTATIONS ABOUT THE PRODUCT DO NOT CONSTITUTE WARRANTIES.

Remedies and Limitation of Liability:

MANUFACTURER'S SOLE LIABILITY AND BUYER'S EXCLUSIVE REMEDY IN CONTRACT, TORT (INCLUDING NEGLIGENCE), OR UNDER ANY OTHER THEORY AGAINST MANUFACTURER REGARDING THE PRODUCT AND ITS USE SHALL BE,

AT MANUFACTURER'S DISCRETION, THE REPLACEMENT OR REPAIR OF THE PRODUCT, OR THE REFUND OF THE PURCHASE PRICE PAID BY BUYER FOR NON-CONFORMING PRODUCT. IN NO EVENT SHALL MANUFACTURER'S LIABILITY ARISING OUT OF THIS LIMITED WARRANTY OR ANY OTHER CLAIM RELATED TO THE MANUFACTURER'S PRODUCTS EXCEED THE AMOUNT PAID FOR THE PRODUCT BY BUYER AT THE TIME OF THE ORIGINAL PURCHASE. IN NO EVENT SHALL MANUFACTURER BE LIABLE FOR LOST PROFITS, THE COST OF SUBSTITUTE EQUIPMENT OR LABOR, PROPERTY DAMAGE, OR OTHER SPECIAL, CONSEQUENTIAL, OR INCIDENTAL DAMAGES BASED UPON ANY CLAIM FOR BREACH OF CONTRACT, IMPROPER INSTALLATION, NEGLIGENCE, OR OTHER CLAIM, EVEN IF MANUFACTURER OR A MANUFACTURER'S REPRESENTATIVE HAS BEEN ADVISED OF THE POSSIBILITY OF SUCH DAMAGES. MANUFACTURER SHALL HAVE NO FURTHER OBLIGATION OR LIABILITY WITH RESPECT TO THE PRODUCT OR ITS SALE, OPERATION AND USE, AND MANUFACTURER NEITHER ASSUMES NOR AUTHORIZES THE ASSUMPTION OF ANY OTHER OBLIGATION OR LIABILITY IN CONNECTION WITH SUCH PRODUCT.

This Limited Warranty defines specific legal rights. You may have other legal rights which vary from jurisdiction to jurisdiction. Some jurisdictions do not allow the exclusion or limitation of incidental or consequential damages.

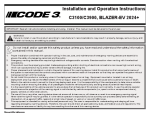
10986 North Warson Road, St. Louis, MO 63114 USA

Technical Service USA [314-996-2800](tel:314-996-2800)

c3_tech_support@code3esg.com

CODE3ESG.com

Documents / Resources



[CODE 3 C3900 BLAZER Siren Speaker \[pdf\]](#) Installation Guide

2024, C3900 BLAZER Siren Speaker, BLAZER Siren Speaker, Siren Speaker, Speaker

References

- [User Manual](#)

Related Posts



[Trust DIXXO Wireless Speaker Installation Guide](#)

Trust DIXXO Wireless Speaker Charging Wireless setup
1 setup 2 Troubleshooting Play music Phone call MP3
Player SD...



[ANCHOR Bigfoot Bluetooth Speaker Installation Guide](#)

BIGFOOT BLUETOOTH INSTALLATION

REQUIREMENTS: 8,000 or series 2 Go Getter unit with
I/O board at revision E (or...



[IKEA ENEBY Speaker Wall Bracket Installation Guide](#)

IKEA ENEBY Speaker Wall Bracket As wall materials
vary, screws for fixing to wall are not included. For...



[SALTO XS4 Code Locker Installation Guide](#)

SALTO XS4 Code Locker Installation guide Only for
doors > 40 mm [1-37/64"1 thickness. All contents are
current...

—Previous Post

CODE 3 MATRIX Compatible OBDII Interface Instruction Manual

Leave a comment

Your email address will not be published. Required fields are marked *

Comment *

Name

Email

Website

☐ Save my name, email, and website in this browser for the next time I comment.

Post Comment

Manuals+, Privacy Policy | @manuals.plus | YouTube

This website is an independent publication and is neither affiliated with nor endorsed by any of the trademark owners. The "Bluetooth®" word mark and logos are registered trademarks owned by Bluetooth SIG, Inc. The "Wi-Fi®" word mark and logos are registered trademarks owned by the Wi-Fi Alliance. Any use of these marks on this website does not imply any affiliation with or endorsement.