

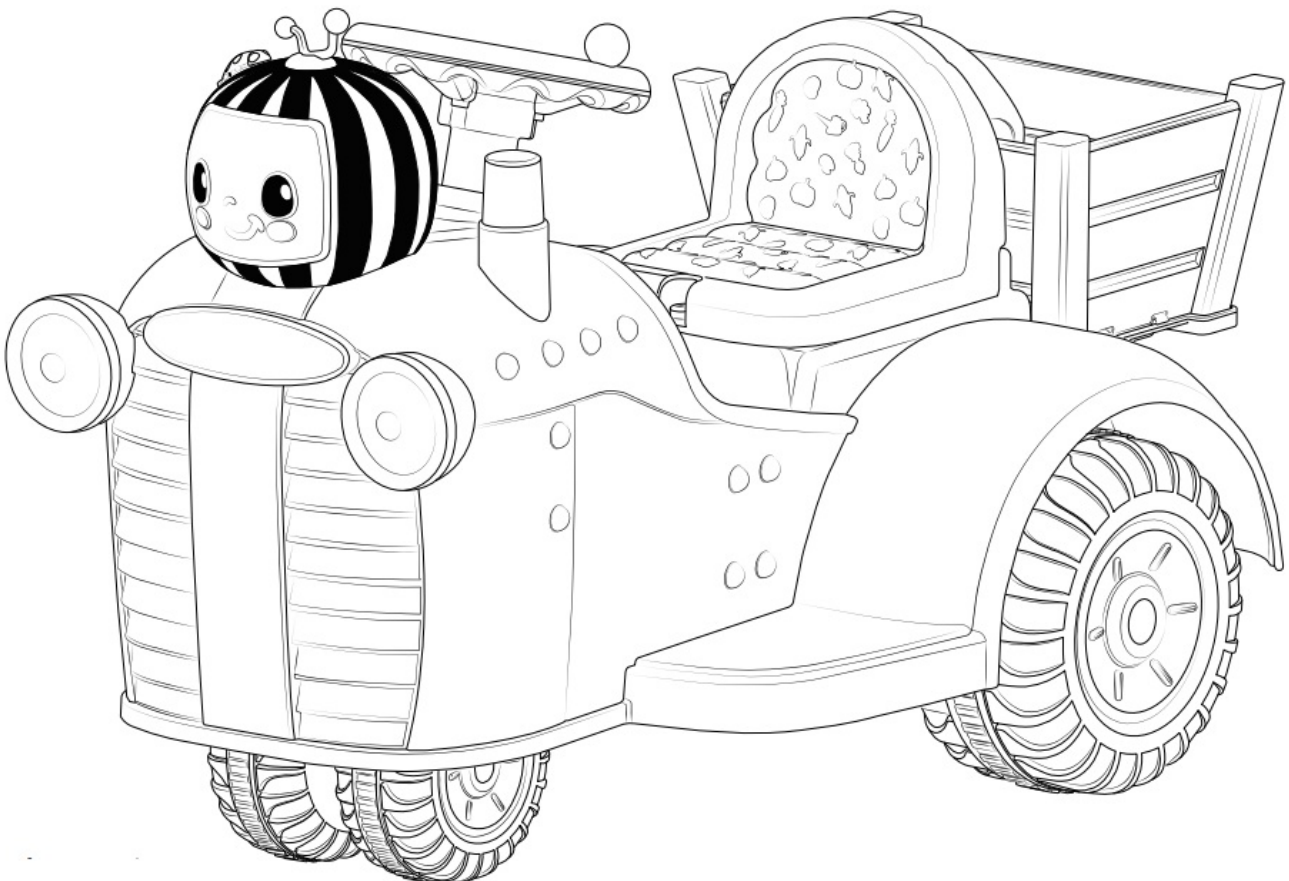


CoComelon 6V Ride On Interactive Tractor User Manual

[Home](#) » [CoComelon](#) » CoComelon 6V Ride On Interactive Tractor User Manual 

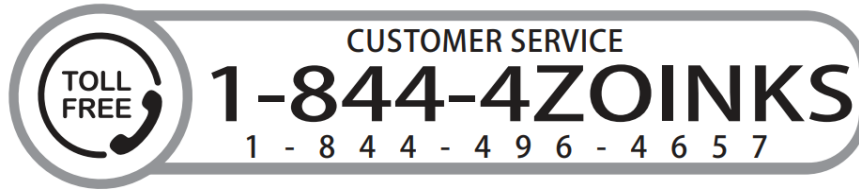


6V Ride On Interactive Tractor User Manual



CoComelon requires
2x "AA" (Not Included) Batteries

PROBLEMS? QUESTIONS?
DO NOT RETURN
PRODUCT TO STORE
Contact our friendly customer service:



70607

For Ages: 18-36 Months

Max Rider Weight: 40lbs (18kgs)

Maximum Speed: 1.6MPH (2.57KPH)

Battery: 6V4(3)AH



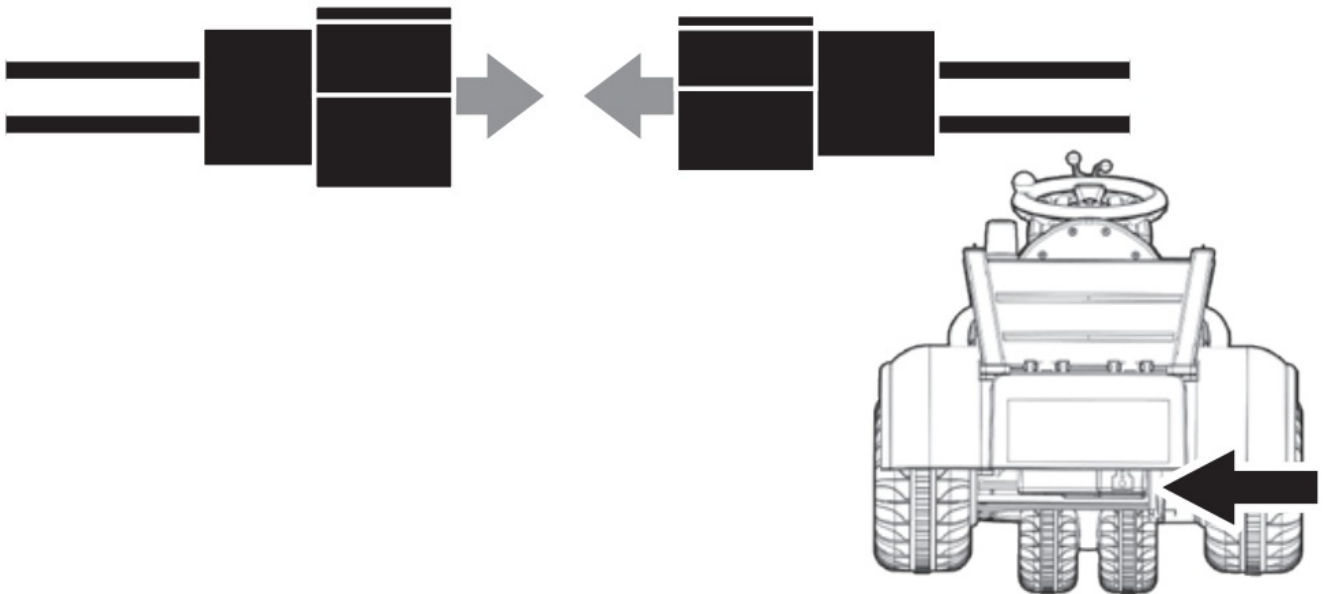
WARNING!

This manual contains important safety and use information. Keep this manual for future reference.

- An adult must read this entire manual
- Adult supervision is required at all times

The battery must be connected to the vehicle before charging for the first time.

BATTERY AND VEHICLE CONNECTORS ARE LOCATED UNDER THE SEAT



The external charging port is located under the rear of the vehicle.

Contents

- [1 Safety](#)
- [2 Assembly](#)
- [3 External Charging](#)
- [4 Controls & Functions](#)
- [5 Maintenance](#)
- [6 Documents / Resources](#)
- [7 Related Posts](#)

Safety



WARNING!

FAILURE TO FOLLOW THE SAFETY INSTRUCTIONS LISTED BELOW MAY RESULT IN SERIOUS INJURY OR DEATH.

The owners manual contains assembly, use, and maintenance instructions.

Child Safety Warnings

- Adults supervising children must read and understand this entire manual before allowing any child to use this product.
- Adults must evaluate their own children as to maturity, strength, judgment, and ability to follow safety rules. Published age guidelines are not a substitute for careful evaluation of your own child.
- Adults must teach children about thinking ahead while riding as this may be the first time a child has ever controlled a motorized ride-on toy. While you supervise, see through the child's eyes, and verbally teach them about steering and avoiding obstacles in the approved riding area.
- Riding a motorized ride-on toy can be a dangerous activity, even under the best of circumstances. Good choices regarding where and when to ride, constant adult supervision of riding, and practice and careful riding by the child can all help to minimize risk. However, this ride-on toy is intended to move, and therefore it is possible for the rider to lose control, fall off and/or get into dangerous situations that no amount of care, instruction, or expertise can eliminate.
- If this inherent risk is not acceptable, adults should not allow children to ride this ride-on toy.

Safe Riding Warnings

- Not to be used by children under eighteen (18) months of age or children over thirty-six (36) months of age
- Do not exceed the maximum weight capacity of 40 lbs (18 KG)
- Do not allow more than one (1) rider.

ADULTS AND SUPERVISORS, PLEASE NOTE

1. Always instruct all children of common sense rules and safe practices.
2. Be aware that flat, hard surfaces provide the safest experience for child riders.
3. Do not allow the child rider to operate the ride-on toy near streets, roads, sidewalks, walkways, or any other place where they may encounter other moving vehicles.
4. Never leave children unattended with this ride-on toy. Continuous adult supervision is required.
5. If necessary, adults and supervisors are always responsible for setting up gates and barriers to ensure a safe riding environment for the child rider.
6. Be aware that this ride-on toy does not have braking capabilities. Allowing the use of this ride-on toy in areas that require braking may cause rolls, crashes, serious injury, or death to the child rider.
7. Teach children not to allow other children to use this ride-on toy. Communicate this message to other adults and supervisors of fellow children with which your child interacts.
8. Sternly alert children that hands, legs, hair, and clothing can potentially get caught in moving parts. Ensure they never place a body part or piece of clothing near a moving part of the ride-on toy. Avoid loose clothing.
9. Instruct children to always wear shoes when using the ride-on toy.

10. Confirm that children do not have access to the charging equipment or come into contact with any part of the ride-on toy while it is charging.

11. Firmly instruct children to use the ride-on toy in a safe manner.

Unsafe behaviors include, but are not limited to:

- Traveling at unsafe speeds
- Not riding in the seated position
- Riding at night or in any conditions of low visibility
- Riding in any wet conditions including rain, snow, and ice
- Any kind of stunt riding: jumps, ramps, stairs, hills, sloped surfaces, or other actions involving any notable risk
- Any kind of off-road riding: rough terrain, dirt, mud, gravel, or any others that involve notable risk
- Riding near any pool or open body of water
- Pushing, pulling, or shoving the driver in any way while operating the ride-on toy
- Using the ride-on toy without the battery cover or any other safety cover fully closed
- Pulling or hitching the ride-on toy with other similar moving ride-on toys or products

Please take attention that changes or modifications not expressly approved by the party responsible for compliance could void the user's authority to operate the equipment. This device complies with part 15 of the FCC Rules.

Operation is subject to the following two conditions:

1. This device may not cause harmful interference, and
2. This device must accept any interference received, including interference that may cause undesired operation.



WARNING!

Battery and Charging Warnings

The following safety hazards may result in serious injury or death to the user of the ride-on:



Corrosive Material Warnings

- Battery posts, terminals and related accessories contain lead and lead compounds (acids) chemicals and are toxic and corrosive. Never open the battery.
- Contact or exposure to battery leakage (lead acid) may cause serious injury. If contact or exposure occurs with the skin or in the eyes, or if the chemical is swallowed, immediately call 911.



Flammable and Explosive Materials Warnings

- Use of a battery or charger other than the supplied rechargeable battery and charger may cause a fire or explosion. Only use the supplied rechargeable battery and charger with the ride-on toy.
- Do not charge the battery near heat or flammable materials.
- Using the rechargeable battery and charger for any other product may result in overheating, fire or explosion. Never use the rechargeable battery and charger with another product.
- Contact between the positive and negative terminals may result in fire or explosion. Avoid direct contact

between the terminals. Lifting the battery by the wires or charger can cause damage to the battery and may result in a fire. Always lift the battery by its case or handles.

- Plug the wall charger directly into a wall outlet. Do not use an extension cord when charging as the use of an extension cord can cause a fire.
- Liquids on the battery may cause fire or electric shock. Always keep all liquids away from the battery and keep the battery dry.

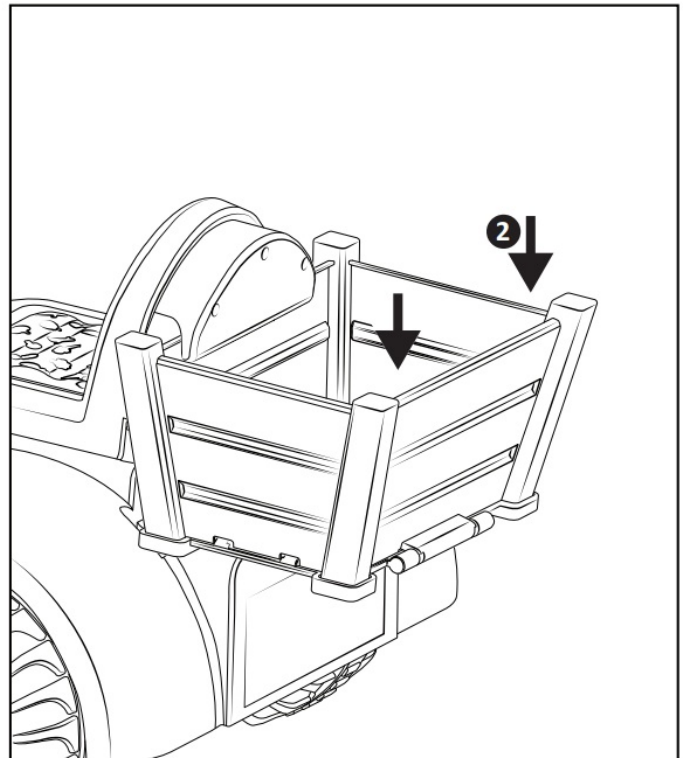
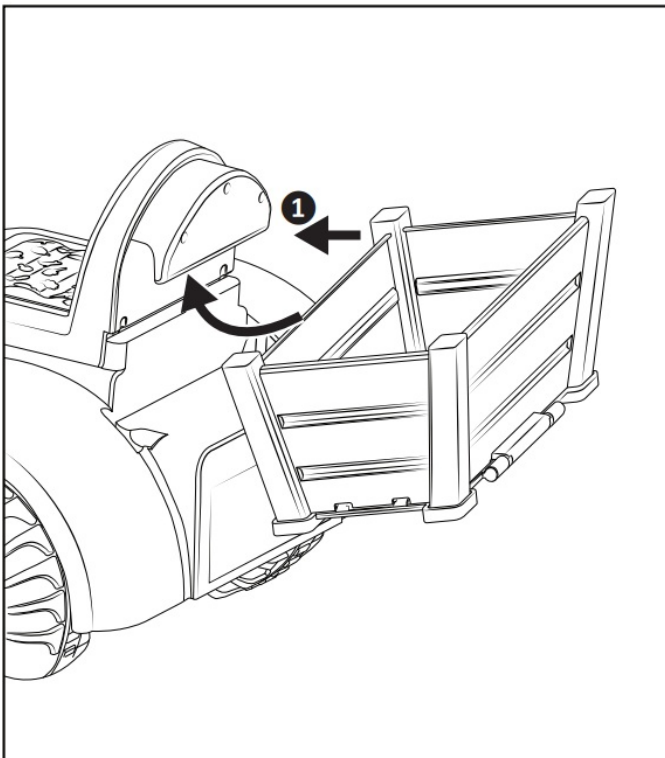


Electric Shock / Fire Warnings

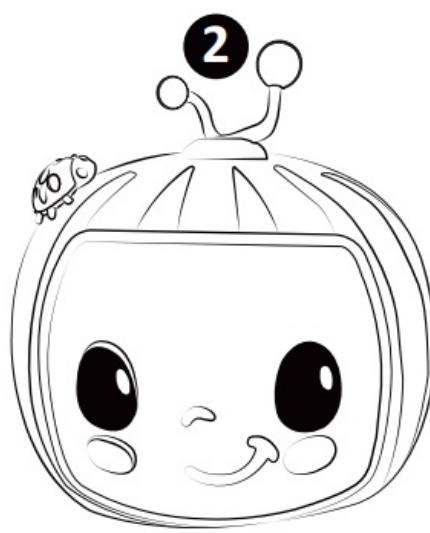
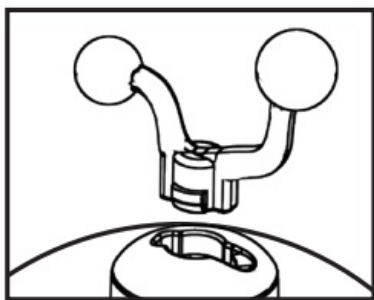
- Tampering or modifying the electric circuit system may cause a shock, fire, or explosion and permanently damage the system. Exposed wiring and circuitry in the charger may cause electric shock. Always keep the charger housing closed.
- Regularly check the charger, supply cord, and connector for wear and damage. Look for frayed or kinked wires, any exposed inner wires, and any missing insulation. If any damage is observed do not plug in the charger and do not charge the battery.
- Do not mix old and new batteries. Do not mix alkaline, standard(carbon-zinc), or rechargeable batteries.

Assembly

Box Assembly

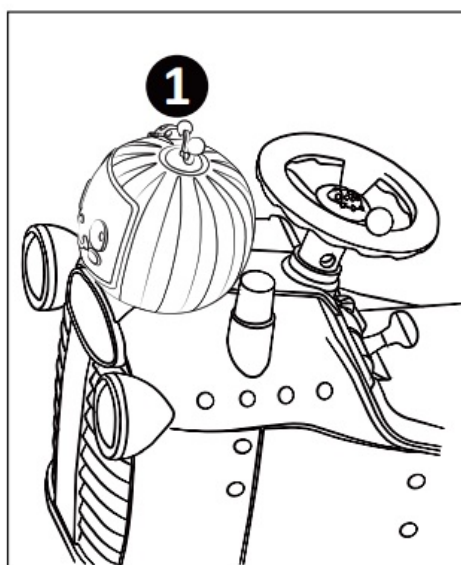


B. Antenna Installation

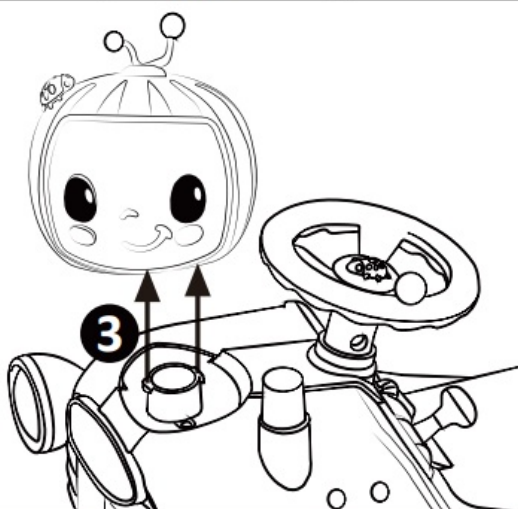


Antenna Installation: Press the antenna firmly into the CoComelon top until secure. The antenna will only install correctly in one position, as shown below:

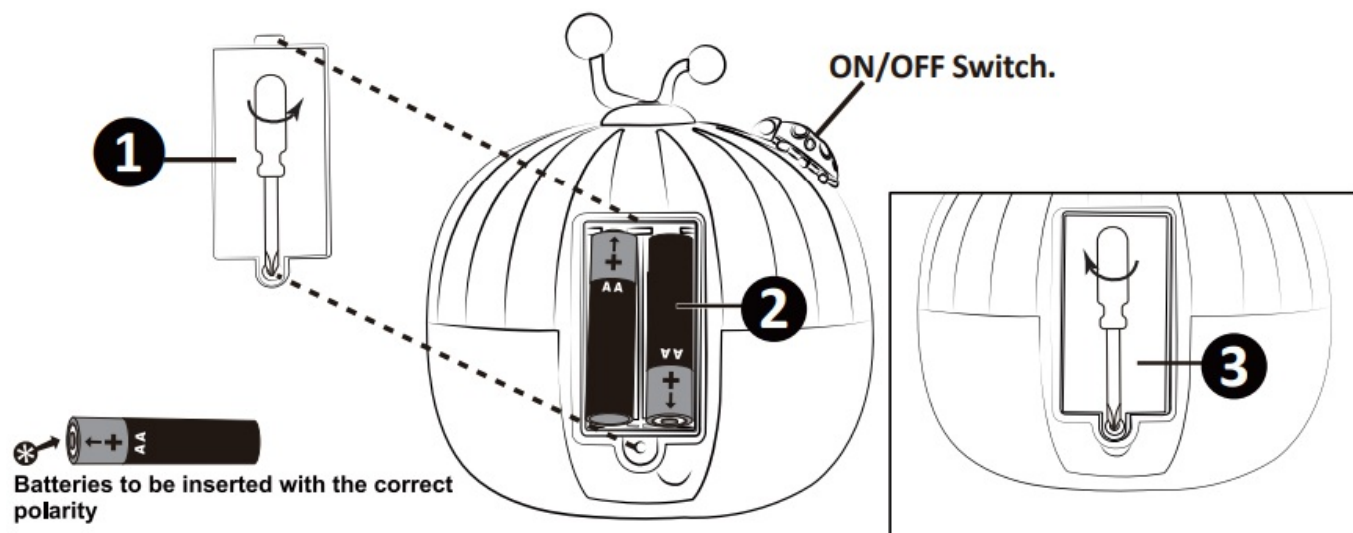
C. GO CoComelon Removal



Rotate the CoComelon 90 degrees counter clockwise to face the exhaust pipe.

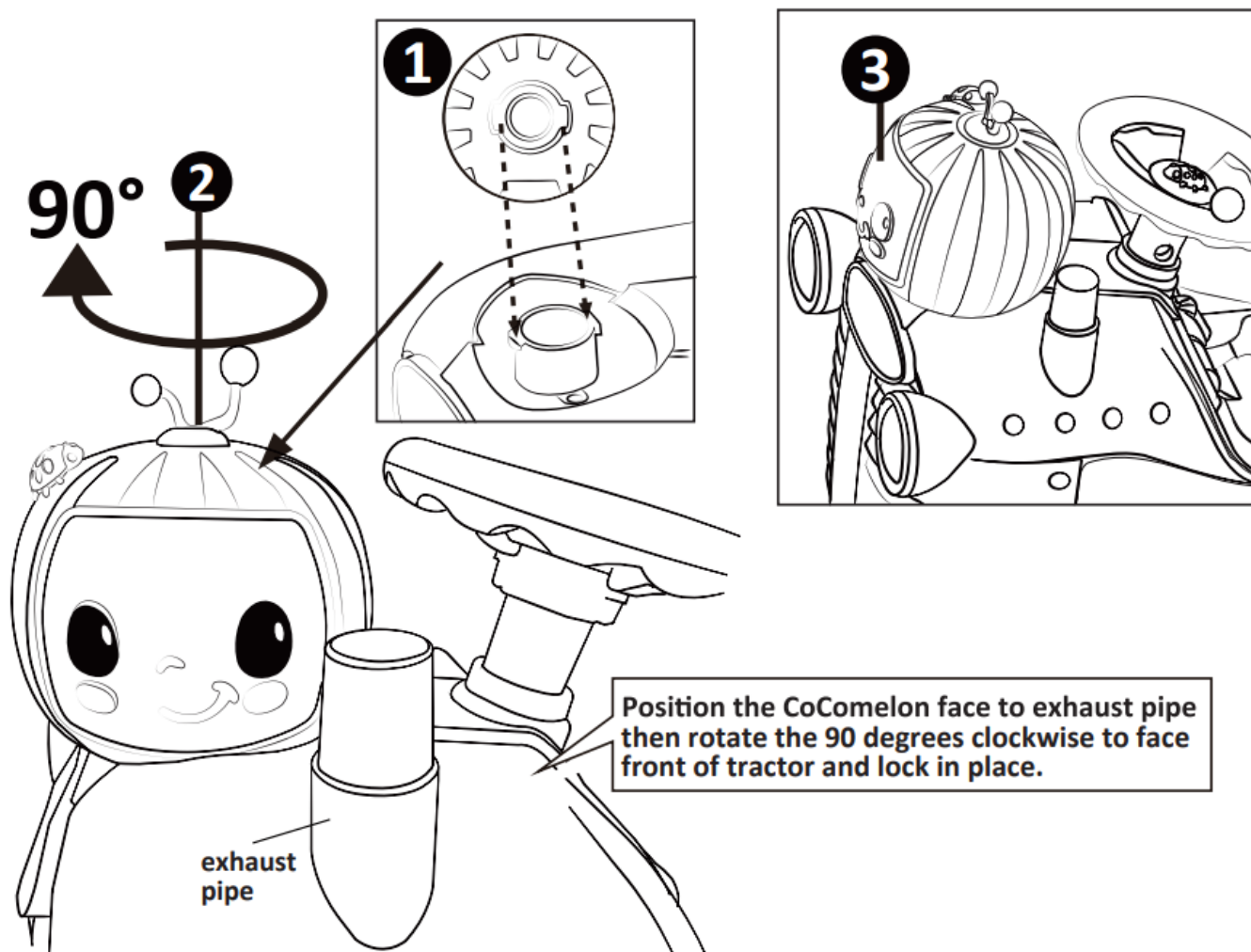


D. Battery Installation



Requires 2 "AA"(not included) batteries. Install new batteries as shown in the polarity diagram(+/-) inside the battery compartment.

E .CoComelon Installation



External Charging



- The battery contains hazardous material that may cause serious injury or death if handled, connected, or charged improperly. Only an adult who has read and understands the warnings and instructions in this manual should handle, connect, or charge the battery.




- Charging the battery for more than 20 hours could cause the battery to explode or ignite resulting in serious injury, death, or property damage. Do not charge the battery for more than 20 hours. Always disconnect the product from the charger after the battery is completely charged.
- A damaged supply cord, connector, or charger could cause burns to the skin, an electrical fire, serious injury, death, or property damage. Always inspect the supply cord, connector, and charger for damage. (e.g., frayed or kinked wires, exposed inner wires, missing insulation) before use. If damaged, do not use the supply cord, connector or charger for any purpose and properly dispose of.
- Connecting the battery and battery charger to an extension cord(s) could result in overheating, explosion, fire, serious injury, death, or property damage. Never charge the battery using an extension cord. Always plug the charger directly into a wall outlet.

NOTICE

- The average time to charge the battery is 10 hours. Failure to follow the instructions regarding charging the battery may result in permanent damage to the battery and void the warranty.
- The battery may become damaged if allowed to drain completely. Always keep the battery charged.

Charge the battery

Charge Times

First charge	Regular charge	No more than
		

3

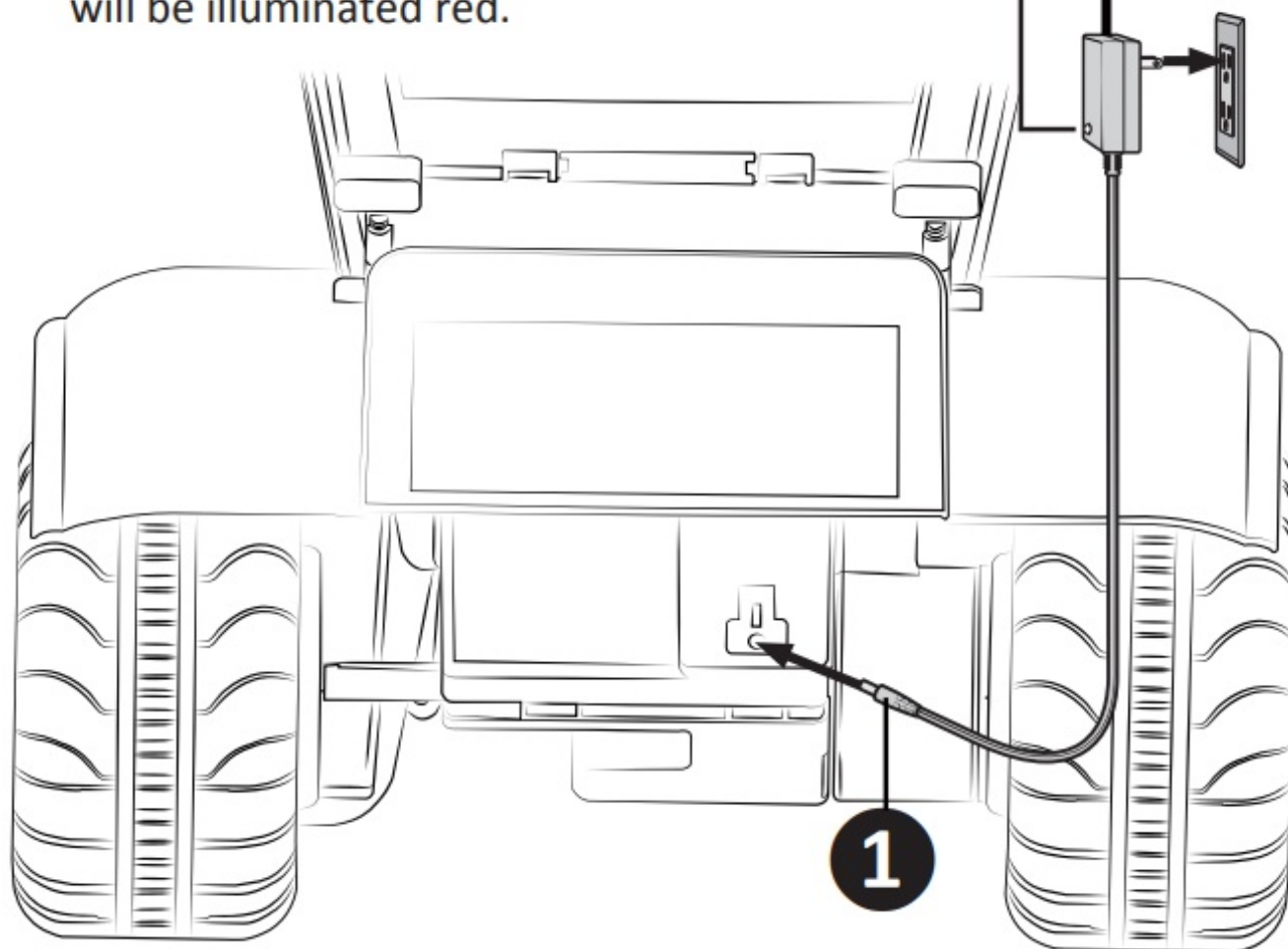


Note: The product will not turn on while plugged into the charger. Remove from charger prior to turning on.

Charge Indicator Light

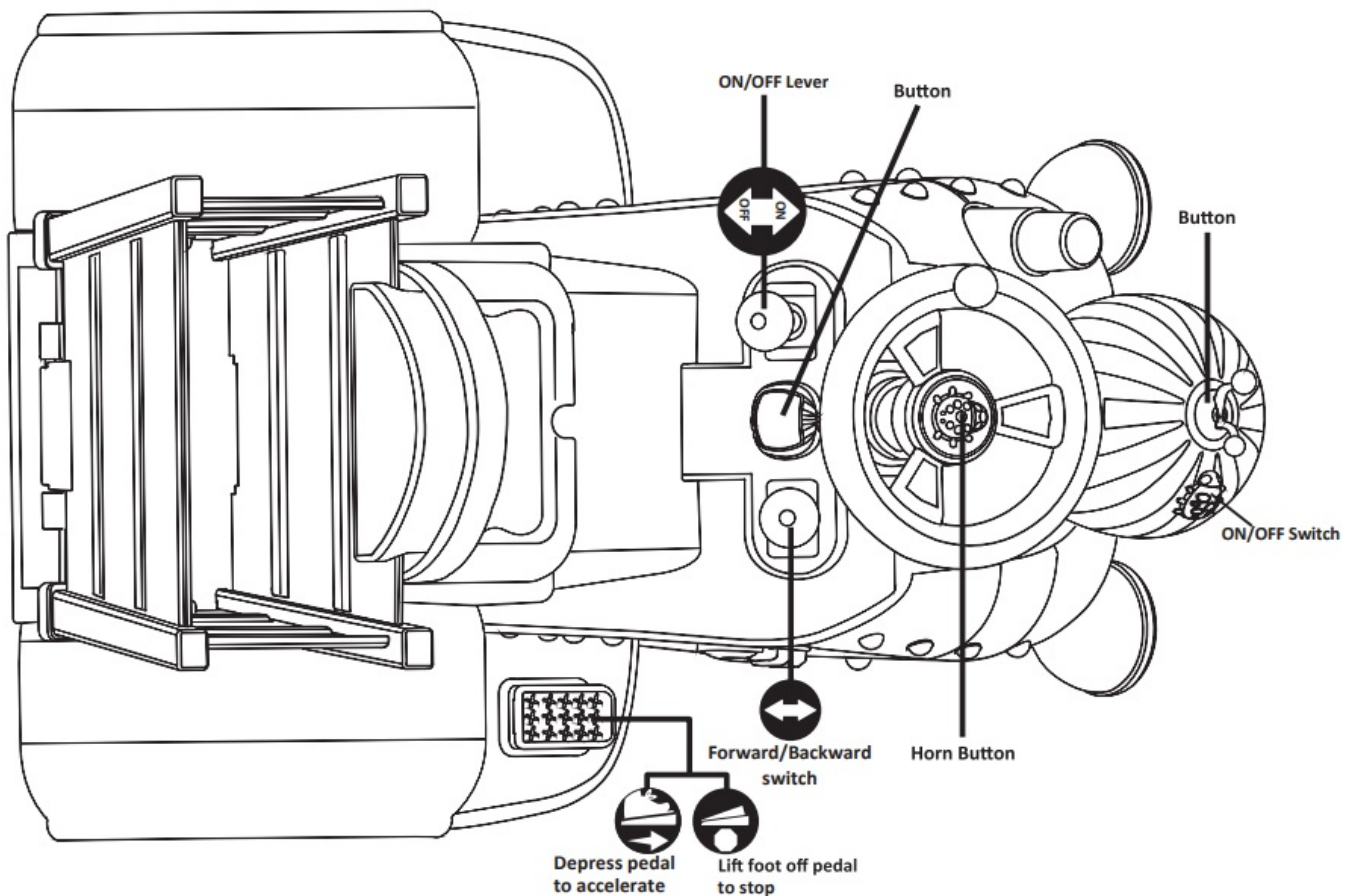
While charging, the charge indicator light will be illuminated red.

2



1

Controls & Functions



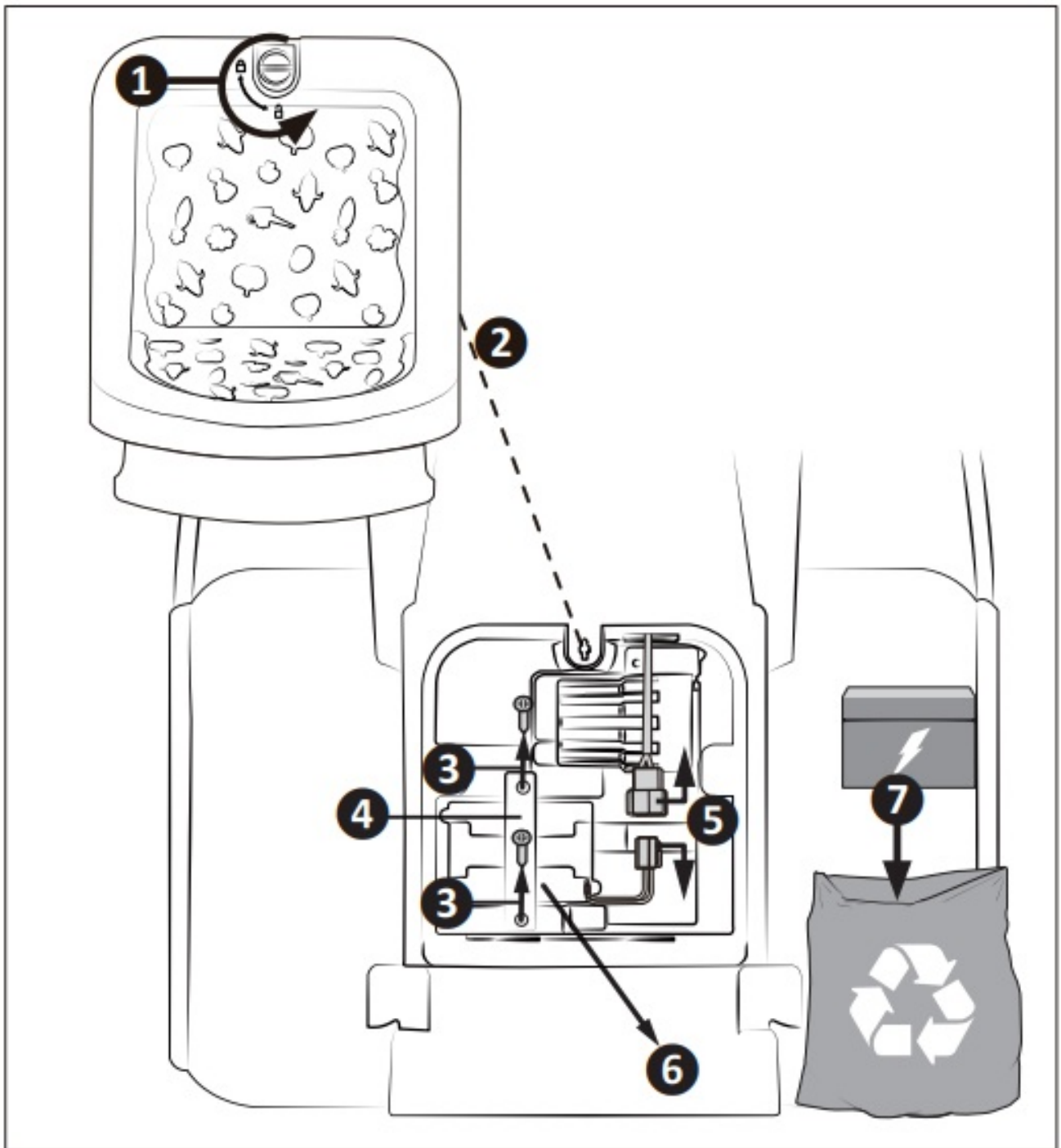
Maintenance

Battery Replacement and Disposal

The battery will eventually lose the ability to hold a charge. Depending on the amount of use, and varying conditions, the battery should operate for one to three years. Follow these steps to replace and dispose of the battery.

Important! Recycle the dead battery responsibly. The battery contains lead acid (electrolyte) and must be disposed of properly and legally. It is illegal in most areas to incinerate lead acid batteries or dispose of them in landfills. Take it to a federal or state-approved lead acid battery recycler, such as an authorized service center or your local automotive battery retailer. Do not throw the battery away with your regular household trash!

1. Twist the knob counterclockwise to unlock the seat.
2. Remove the seat from the tractor by pulling it straight up.
3. Using a Phillips screwdriver, remove 2 screws holding down the battery bracket.
4. Remove the battery bracket from the vehicle.
5. Depress retaining clip and disconnect wiring connectors by pulling apart.
6. Remove the battery from vehicle.
7. Dispose of the battery according to local regulations.



The vehicle should be checked for damage, missing, or badly worn parts before each use.

- Check the tightness of the fasteners before each use.
- Check the tightness of the wheels before each use.
- Ensure the battery is securely in place before each use.
- Clean the vehicle with a soft, dry cloth. To restore shine to plastic parts, use non-wax furniture polish. Do not use car wax, or abrasive cleaners or wash the vehicle with soap and water. Water will damage the motor, electrical system, and battery.
- Do not wash the vehicle with a hose.
- Do not wash the vehicle with soap and water
- Store the vehicle indoors or cover it with a tarp to protect it from the wet weather. Keep it away from sources of heat, such as stoves and heaters.
- Do not leave the vehicle in the sun for long periods of time or fading may occur. Store in the shade or cover

with a tarp.

CoComelon™ Copyright © 2022 Moonbug Entertainment.

All Rights Reserved.

MADE IN CHINA

PROBLEMS? QUESTIONS?


DO NOT RETURN

PRODUCT TO STORE

Contact our friendly customer service:



Documents / Resources

	<p>CoComelon 6V Ride On Interactive Tractor [pdf] User Manual 70607, 2A77470607, 6V Ride On Interactive Tractor, Interactive Tractor, Tractor, RC Tractor</p>
---	---

Manuals+.