




Cochlear Baha 5 Sound Processor User Manual

[Home](#) » [Cochlear](#) » Cochlear Baha 5 Sound Processor User Manual 

Contents

- [1 Cochlear Baha 5 Sound Processor](#)
- [2 Key to device](#)
- [3 Introduction](#)
- [4 Warranty](#)
- [5 Key to symbols](#)
- [6 Using your sound processor](#)
- [7 Statement](#)
- [8 Documents / Resources](#)
 - [8.1 References](#)
- [9 Related Posts](#)



Cochlear Baha 5 Sound Processor



Welcome

Congratulations on your choice of the Cochlear™ Baha® 5 Sound Processor. You are now ready to use Cochlear's highly advanced bone conduction sound processor, featuring sophisticated signal processing and wireless technology. This manual is full of tips and advice on how to best use and care for your Baha sound processor. By reading this manual and then keeping it handy for future reference, you will ensure that you get the most benefit out of your Baha sound processor.

Key to device

1. Microphones
2. Battery compartment door
3. Attachment point for the safety line
4. Plastic snap connector
5. Program button, Wireless audio streaming button

Note on figures: The figures included on the cover correspond to information specific to this model of sound processor. Please reference the appropriate figure when reading. The images shown are not to scale.

Introduction

To ensure optimal performance, your hearing care professional will fit the processor to suit your needs. Be sure to discuss any questions or concerns that you may have regarding your hearing or use of this system with your hearing care professional.

Warranty

The warranty does not cover defects or damage arising from, associated with, or related to the use of this product with any non-Cochlear processing unit and/or any non-Cochlear implant. See the "Cochlear Baha Global Limited Warranty card" for more details.

- **Contacting Customer Service**

- We strive to provide you with the best possible products and services. Your views and experiences with our products and services are important to us. If you have any
- comments you would like to share, please contact us.

- **Customer Service – Cochlear Americas 10350 Park Meadows Drive, Lone Tree CO 80124, USA**

- **Toll free** (North America) 1800 523 5798 **Tel:** +1 303 790 9010,
- **Fax:** +1 303 792 9025

- **E-mail:** customer@cochlear.com

- **Customer Service – Cochlear Europe**

- 6 Dashwood Lang Road, Bourne Business Park, Addlestone, Surrey KT15 2HJ, United Kingdom
- **Tel:** +44 1932 26 3400,
- **Fax:** +44 1932 26 3426

- **E-mail:** info@cochlear.co.uk

- **Customer Service – Cochlear Asia Pacific 1 University Avenue, Macquarie University, NSW 2109, Australia**

- **Toll free** (Australia) 1800 620 929
- **Toll free** (New Zealand) 0800 444 819 **Tel:** +61 2 9428 6555,
- **Fax:** +61 2 9428 6352 or
- **Toll free** Fax 1800 005 215
- **E-mail:** customerservice@cochlear.com.au

Key to symbols

The following symbols will be used throughout this document. Please refer to the list below for explanations:

- “Caution” or “Caution, consult accompanying documents”
- Audible signal
- CE mark and Notified Body number
- Manufacturer
- Batch Code
- Catalogue number
- “Caution” or “Caution, consult accompanying documents”
- Audible signal
- CE mark and Notified Body number
- Manufacturer
- Batch Code
- Catalogue number
- Made for iPod, iPhone, iPad
- Refer to instructions/booklet. Note: Symbol is blue.
- Recyclable material
- Radio compliance certification for Japan
- Made for iPod, iPhone, iPad
- Refer to instructions/booklet. Note: Symbol is blue.
- Recyclable material

- Radio compliance certification for Japan Bluetooth®
- Waste of Electrical and Electronic Equipment
- Radio compliance certification for Korea
- Radio compliance certification for Brasil

Using your sound processor

The button on your sound processor lets you choose from your pre-set programs and enable/disable wireless streaming. You can choose to enable the audio indicators to alert you of changes to the settings and processor status.

Your sound processor is programmed to be used as either a left or right-sided device. Your hearing care professional will have marked your processor(s) with a L or R indicator.

If you are a bilateral user, changes you make to one device will automatically apply to the second device.

On/off

See figure 2

Turn on your sound processor by completely closing the battery compartment.

Turn off your sound processor by gently opening the battery compartment until you feel the first “click”.

When your sound processor is turned off and then back on again, it will return to the default setting (program one).

Status indicator

See figure 3

Your sound processor is equipped with audible indicators. For a an overview of the audible indicators, refer to the table at the back of this section.

Your hearing care professional can disable the audio indicators if you prefer.



Change program/streaming

See figure 4

Together with your hearing care professional you will have selected up to four pre-set programs for your sound processor:

- Program 1: _____
- Program 2: _____
- Program 3: _____
- Program 4: _____
- These programs are suitable for different listening environments. Ask your hearing care professional to fill in your specific programs.
- To switch programs, press and release the button on your sound processor. If enabled, an audio indicator will let you know which program you are using: Program 1: 1
- beep
- Program 2: 2 beeps
- Program 3: 3 beeps
- Program 4: 4 beeps

Adjust volume

Your hearing care professional has set the volume level for your sound processor. You can adjust the volume level with the optional Cochlear Baha Remote Control, the Cochlear Wireless Phone Clip or an iPhone, iPad or iPod touch (see Made for iPhone section).

Wireless accessories

You can use Cochlear Wireless accessories to enhance your listening experience. Ask your hearing care professional to learn more about your options or visit www.cochlear.com.

To activate wireless audio streaming, press and hold the sound processor button until you hear a melody.

See figure 4

To end wireless audio streaming, press and release the button. The sound processor will return to the previous program.



Flight mode

See figure 8

When boarding a flight, wireless functionality must be deactivated because radio signals may not be transmitted during flights. To disable wireless operation:

1. Turn off the sound processor by opening the battery compartment.
2. Press the button and close the battery compartment at the same time.

To deactivate flight mode, turn the sound processor off and back on again. (by opening and closing the battery compartment).

Made for iPhone (MFi)

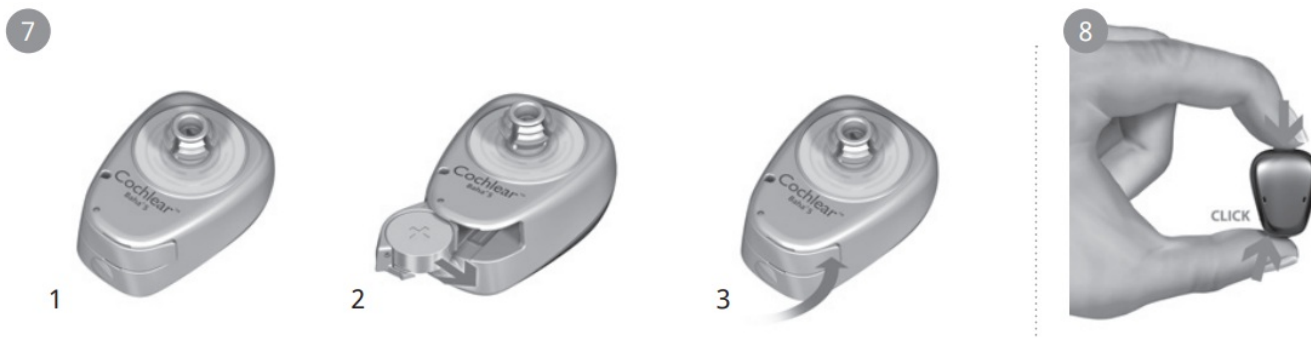
Your sound processor is a Made for iPhone (MFi) hearing device. This allows you to control your sound processor and stream audio directly from iPhone, iPad or iPod touch. For full compatibility details and more information visit www.cochlear.com.

1. To pair your sound processor turn on Bluetooth on your iPhone, iPad or iPod touch.
2. Turn off your sound processor and go to Settings > General > Accessibility on your iPhone, iPad or iPod touch.
3. Turn on your sound processor and select Hearing Aids in the Accessibility menu.

When displayed, tap on the sound processor name under “Devices” and press

Pair when prompted.

1. Hold the sound processor with the back facing upwards.
2. Gently open the battery compartment until it is completely open. Remove the old battery. Dispose of the battery according to local regulations. Remove the sticker on the + side of the new battery. Insert the new battery with the + sign facing upwards in the battery compartment.
3. Gently close the battery compartment until it is completely closed.



Battery tips

- Battery life decreases as soon as the battery is exposed to air (when the plastic strip has been removed).
- Battery life depends on daily use, the volume setting, the use of wireless audio streaming, the sound environment, the program setting, and battery strength.
- To maximise battery life, switch off the sound processor when its not in use.
- If a battery leaks, replace it immediately.

Optional tamper-proof battery door

To prevent the accidental opening of the battery door, an optional tamper-resistant battery door is available. This is particularly useful to prevent children, and other recipients in need of supervision, from accidentally accessing the battery. Contact your hearing care professional for a tamper-resistant battery door.

- To unlock the device, carefully insert the tip of a pen in the small hole on the battery door and gently open the battery compartment.
- To lock the device, gently close the battery compartment until it is completely closed.
- Before use, verify that the tamper-proof battery door is locked.

WARNING:

Batteries can be harmful if swallowed, put in the nose or in the ear. Be sure to keep your batteries out of reach of small children and other recipients in need of supervision. Before use, verify that the tamper-resistant battery door is properly closed. In the event a battery is accidentally swallowed, or stuck in the nose or in the ear, seek

immediate medical attention at the nearest emergency centre. Batteries can be harmful if swallowed, put in the nose or in the ear. Be sure to keep your batteries out of reach of small children and other recipients in need of supervision. Before use, verify that the tamper-resistant battery door is properly closed. In the event a battery is accidentally swallowed, or stuck in the nose or in the ear, seek immediate medical attention at the nearest emergency centre.

General care

Your Baha sound processor is a delicate electronic device. Follow these guidelines to keep it in proper working order:

- When not in use, turn off your sound processor and store it free from dust and dirt.
- If you will not be using your sound processor for a long period, remove the battery.
- During physical activities, secure your sound processor by using the safety line.
- Remove your sound processor before applying hair conditioners, mosquito repellent and or similar products.
- Avoid exposing your sound processor to extreme temperatures.
- Your sound processor is not waterproof. Do not use it when swimming and avoid exposing it to heavy rain.
- For cleaning your sound processor and snap coupling use the
- Baha sound processor Cleaning kit.

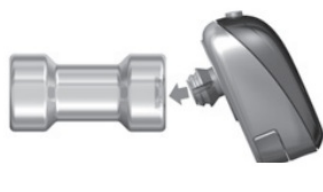
If the sound processor becomes very wet

1. Immediately open the battery door and remove the battery.
2. Put your sound processor in a container with drying capsules such as a Dri-Aid Kit, etc. Leave it to dry out overnight. Drying kits are available from most hearing care professionals.

9



10

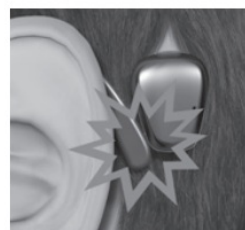


1



2

11



Feedback (whistling) problems See figure 11

Check to ensure that your sound processor is not in contact with items such as glasses or a hat, since that can cause feedback. Also ensure the sound processor is not in contact with your head or ear. Check that the battery compartment is closed. Check that there is no external damage to the sound processor.

Share the experience

See figure 10

Family members and friends can “share the experience” of bone conduction hearing. The test rod can be used by others to hear with the sound processor.

To use the test rod

Turn on your sound processor and snap it onto the test rod using the tilt technique. Hold the rod against the skull bone behind an ear. Plug both ears and listen.

To avoid feedback (whistling), the sound processor should not touch anything other than the test rod.

Functions and audible indicators		
Function	On the device	Audible indicator
Turn ON	Close battery compartment	●●●●●●●●●● 10 beeps
Turn OFF	Open battery compartment	None
Change program. Number of beeps indicates the number of the current program.	Short button press	● ● ● ● ● ● ● ● ● ● 1-4 beeps
Low battery warning		●●●● ●●●● 4 beeps 2 times
When using Cochlear Wireless Accessory or MFi		
Change volume	With Cochlear Baha Remote Control, Cochlear Wireless Phone Clip or with an iPhone, iPad or iPod touch	● 1 beep indicates volume increase/decrease
Volume limit reached	With Cochlear Baha Remote Control, Cochlear Wireless Phone Clip or with an iPhone, iPad or iPod touch	▬ 1 long beep
Wireless streaming activated	Long button press	♫ ♫ ♫ ♫ ♫ Ripple tone (melody in upward scale)
End wireless streaming	Short button press	● ● ● 1 beep for program 1 2 beeps for program 2 etc
Pairing confirmation	None	♫ ♫ ♫ ♫ ♫ Ripple tone (melody in upward scale)
Toggle between wireless accessories	Long button press	♫ ♫ ♫ ♫ ♫ Ripple tone (melody in upward scale)
Turn ON flight mode	Press button and close battery compartment	●● ●● ●● ●● ●● 10 x dual beeps

Note: Your hearing care professional may have disabled some or all of the audible indicators.

Theft and metal detection systems and Radio Frequency

ID (RFID) systems:

Devices such as airport metal detectors, commercial theft detection systems, and RFID scanners may produce strong electromagnetic fields. Some Baha users may experience a distorted sound sensation when passing through or near one of these devices. If this occurs, you should turn off the sound processor when in the vicinity of one of these devices. The materials used in the sound processor may activate metal detection systems. For this reason, you should carry the Security Control MRI Information Card with you at all times.

Electrostatic discharge

A discharge of static electricity can damage the electrical components of the sound processor or corrupt the program in the sound processor. If static electricity is present (e.g. when putting on or removing clothes over the head or getting out of a vehicle), you should touch something conductive (e.g. a metal door handle) before your sound processor contacts any object or person. Prior to engaging in activities that create extreme electrostatic discharge, such as playing on plastic slides, the sound processor should be removed.

General advice

A sound processor will not restore normal hearing and will not prevent or improve a hearing impairment resulting from organic conditions.

- Infrequent use of a sound processor may not enable a user to attain full benefit from it.
- The use of a sound processor is only part of hearing rehabilitation and may need to be supplemented by auditory and lip reading training.

Warnings

- Contains small parts that may present a choking hazard.
- Adult supervision is recommended when the user is a child
- The sound processor and other external accessories should never be brought into a room with an MRI machine, as damage to the sound processor or the MRI equipment could occur.
- The sound processor must be removed before entering a room where an MRI scanner is located.

Advice

- The sound processor is a digital, electrical, medical instrument designed for specific use. As such, due care and attention must be exercised by the user at all times.
- The sound processor is not waterproof!
- Never wear it in heavy rain, in the bath or shower!
- Do not expose the sound processor to extreme temperatures. It is designed to operate within the temperature ranges +5 °C (+41 °F) to +40 °C (+104 °F). In particular, battery performance deteriorates in temperatures under +5 °C. The
- This product is not suitable for use in flammable and/or explosive environments.
- If you are to undergo an MRI (Magnetic Resonance Imaging) procedure, refer to the MRI Reference Card included in the document pack.
- Portable and mobile RF (radio frequency) communications equipment can affect the performance of your sound processor.
- The sound processor is suitable for use in electromagnetic environments with mains power of typical commercial or hospital quality, and power frequency magnetic fields
- Interference may occur in the vicinity of equipment with the symbol to the right.
- Dispose of batteries and electronic items in accordance with your local regulations.
- Discard your device as electronic waste according to local regulations.
- When the wireless function is activated, the sound processor uses low-powered digitally coded transmissions in order to communicate with other wireless devices. Although unlikely, nearby electronic devices may be affected. In that case, move the sound processor away from the affected electronic device.
- When using wireless functionality and the sound processor is affected by electromagnetic interference, move away from the source of this interference.
- Be sure to deactivate wireless functionality when boarding flights.
- Turn off your wireless functionality by using the flight mode in areas where radio frequency emission is prohibited.
- Cochlear Baha wireless devices include an RF transmitter that operates in the range of 2.4 GHz–2.48 GHz.

- For wireless functionality, only use Cochlear Wireless accessories. For further guidance regarding e.g.
- No modification of this equipment is allowed.
- Portable RF communications equipment (including peripherals such as antenna cables and external antennas) should be used no closer than 30 cm (12 in.) to any part of your Baha 5, including cables specified by the manufacturer. Otherwise, degradation of the performance of this equipment could result.
- Use of accessories, transducers and cables other than those specified or provided by Cochlear could result in increased electromagnetic emissions or decreased electromagnetic immunity of this equipment and result in improper operation.

Sound processor type designations for models included in this User Manual are:

FCC ID: QZ3BAHA5, IC: 8039C-BAHA5, IC model: Baha® 5.

Statement

This device complies with Part 15 of the FCC Rules. Operation is subject to the following two conditions: (1) this device may not cause harmful interference, and (2) this device must accept any interference received, including interference that may cause undesired operation.

NOTE:

This equipment has been tested and found to comply with the limits for a Class B digital device, pursuant to part 15 of the FCC Rules. These limits are designed to provide reasonable protection against harmful interference in a residential installation. This equipment generates, uses and can radiate radio frequency energy and, if not installed and used in accordance with the instructions, may cause harmful interference to radio communications. However, there is no guarantee that interference will not occur in a particular installation. If this equipment does cause harmful interference to radio or television reception, which can be determined by turning the equipment off and on, the user is encouraged to try to correct the interference by one or more of the following measures:

- Reorient or relocate the receiving antenna.
- Increase the separation between the equipment and receiver.
- Connect the equipment into an outlet on a circuit different from the one in which the receiver is connected.
- Consult the dealer or an experienced radio/TV technician for help.
- Changes or modifications can void the user's authority to operate the equipment.

Intended use

The Cochlear™ Baha® 5 Sound Processor uses bone conduction to transmit sounds to the cochlea (inner ear). It is indicated for people with conductive hearing loss, mixed hearing loss and single sided sensorineural deafness (SSD). Furthermore it is indicated for bilateral and paediatric recipients. Fitting range up to 45 dB SNHL. It works by combining a sound processor and a small titanium implant that is placed in the skull behind the ear. The skull bone integrates with the titanium implant through a process called osseointegration. This allows sound to be conducted via the skull bone directly to the cochlea, which improves hearing performance. The sound processor can be used together with the Baha Softband. The fitting is to be done either at a hospital, by an audiologist, or in some countries, by a hearing care professional.

List of countries:

Not all products are available in all markets. Product availability is subject to regulatory approval in the respective markets.

The products are in compliance with the following regulatory requirements:

In EU: the device conforms to the Essential Requirements according to Annex I of Council Directive 93/42/EEC for medical devices (MDD) and essential requirements and other relevant provisions of Directive 2014/53/EU (RED). The declaration of conformity may be consulted at www.cochlear.com.

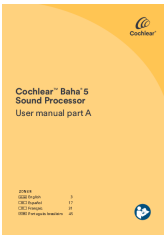
- Other identified applicable international regulatory requirements in countries outside the EU and US. Please refer to local country requirements for these areas.
- In Canada the sound processor is certified under the following certification number: IC: 8039C-BAHA5 and model no.: IC model: Baha® 5.
- This device complies with Industry Canada licence-exempt RSS standard(s).
- This Class B digital apparatus complies with Canadian ICES-003. Cet appareil numérique de la classe B est conforme à la norme NMB-003 du Canada.
- Operation is subject to the following two conditions: (1) this device may not cause interference, and (2) this device must accept any interference, including interference that may cause undesired operation of the device. L'exploitation est autorisée aux deux conditions suivantes : (1) l'appareil ne doit pas produire de brouillage, et (2) l'utilisateur de l'appareil doit accepter tout brouillage radioélectrique subi, même si le brouillage est susceptible d'en compromettre le fonctionnement.

Equipment includes RF transmitter.

NOTE:

The sound processor is suited for use in a home healthcare environment. The home healthcare environment includes locations such as homes, schools, churches, restaurants, hotels, cars, and airplanes, where equipment and systems are less likely to be administered by healthcare professionals.

Documents / Resources

	<p>Cochlear Baha 5 Sound Processor [pdf] User Manual Baha 5 Sound Processor, Baha 5, Sound Processor, Processor</p>
---	---

References

- [Cochlear Americas | Hear Now And Always | Cochlear Implants](#)
- [Sound Processor and App Compatibility](#)