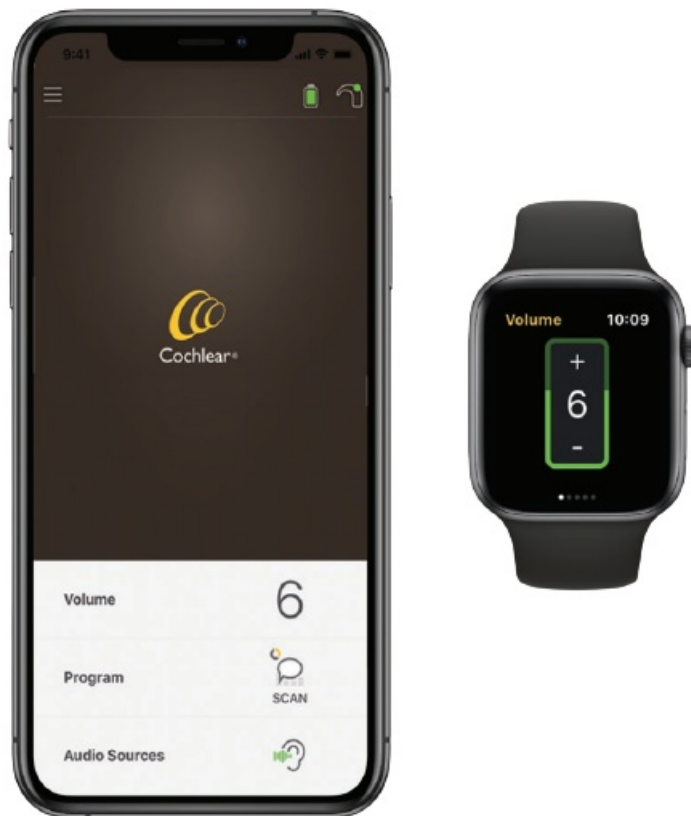




Cochlear Addendum to Nucleus Smart App for iPhone and iPod touch User Guide

[Home](#) » [Cochlear](#) » Cochlear Addendum to Nucleus Smart App for iPhone and iPod touch User Guide 





Addendum to Nucleus® Smart App for iPhone® and iPod touch®
P832154 Version 2.0

Front cover

Replace Version 2.0 with Version 3.0.

Replace image (Apple Watch added):



NUCLEUS SMART APP – APPLE WATCH ADDENDUM

Contents

- [1 Use Apple Watch](#)
- [2 Adjust volume](#)
- [3 Change program](#)
- [4 Stream audio](#)
- [5 Check status](#)
- [6 Notes](#)
- [7 Documents / Resources](#)
- [8 Related Posts](#)

Use Apple Watch

The Nucleus Smart App can be used on your Apple Watch if your watch is paired with your iPhone.*

After installation and set up of the Nucleus Smart App on your iPhone, check your Apple Watch to see if the Nucleus Smart App has been installed automatically. If not, use the Watch app on your iPhone to select and install the Nucleus Smart App.

To use the app on your Apple Watch:

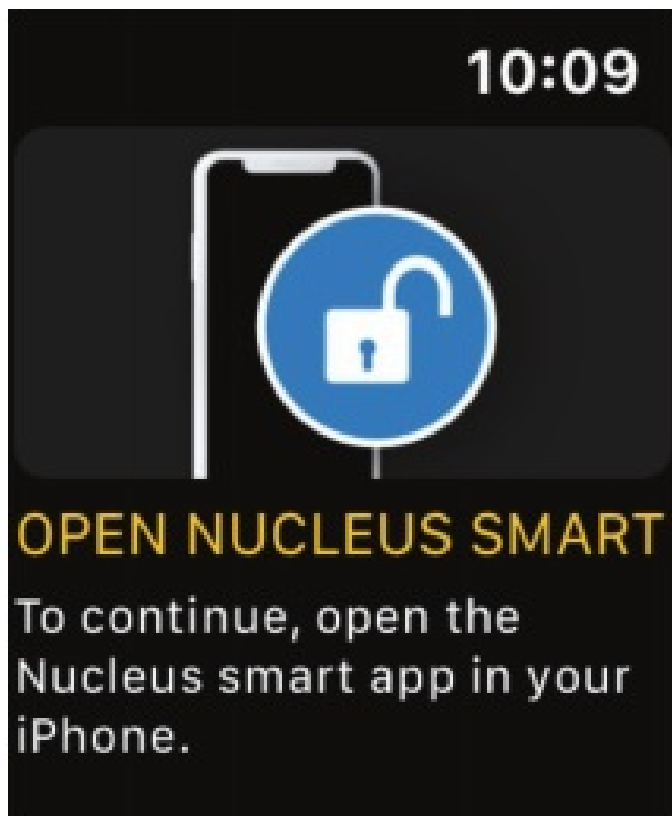
- start the app on your iPhone.
- keep your Apple Watch close to your

You can change available settings on your Apple Watch or your iPhone – a change on one will be reflected on the other. If your iPhone is dimmed, app alerts will show on your Apple Watch.

If your iPhone is turned off, the Apple Watch app displays a message.

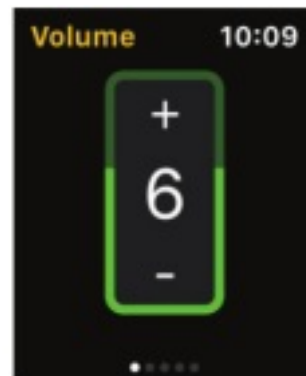
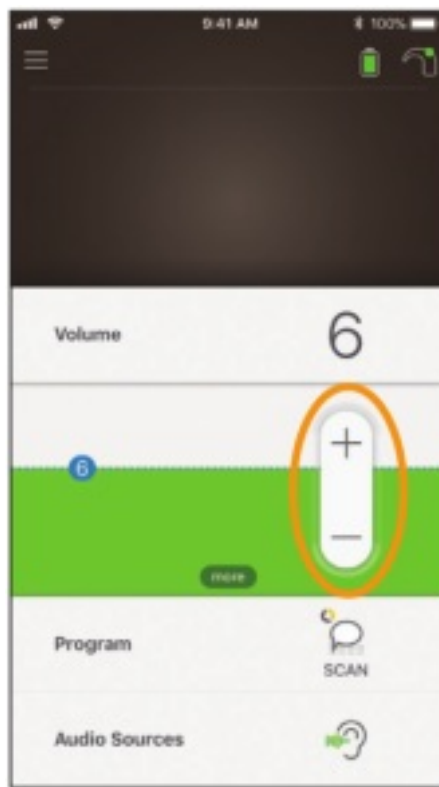
* Nucleus Smart App functions on Apple Watch are unavailable in some areas. If unavailable, a message displays in the app on your Apple Watch.

If your iPhone is turned on but the app isn't running, Apple Watch displays this message: A subset of Nucleus Smart App functions are available on your Apple Watch. Screens for Apple Watch are included where relevant on the following pages.



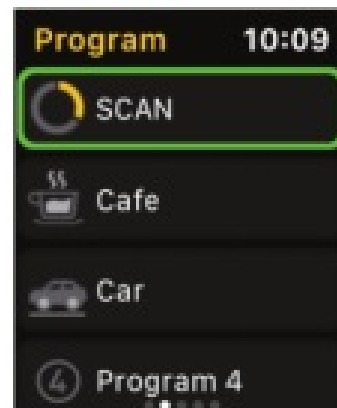
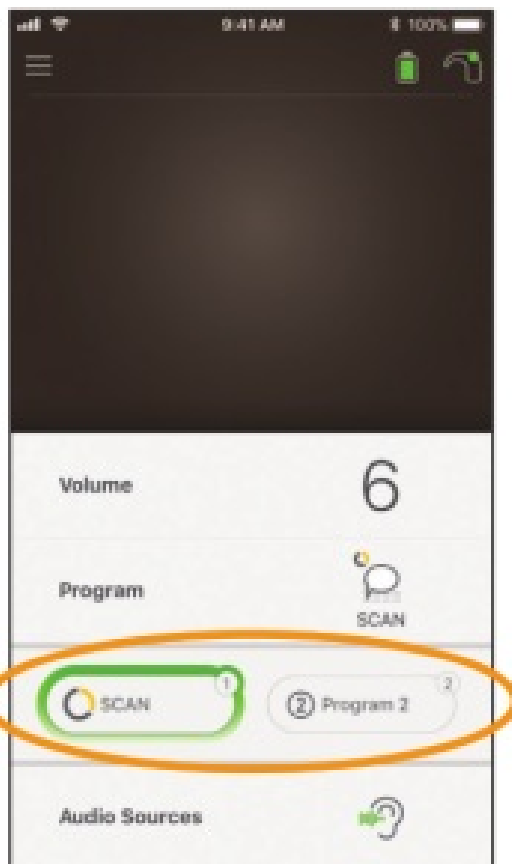
Adjust volume

1. Tap **Volume** to open its control panel.
2. Tap + / – to change volume.



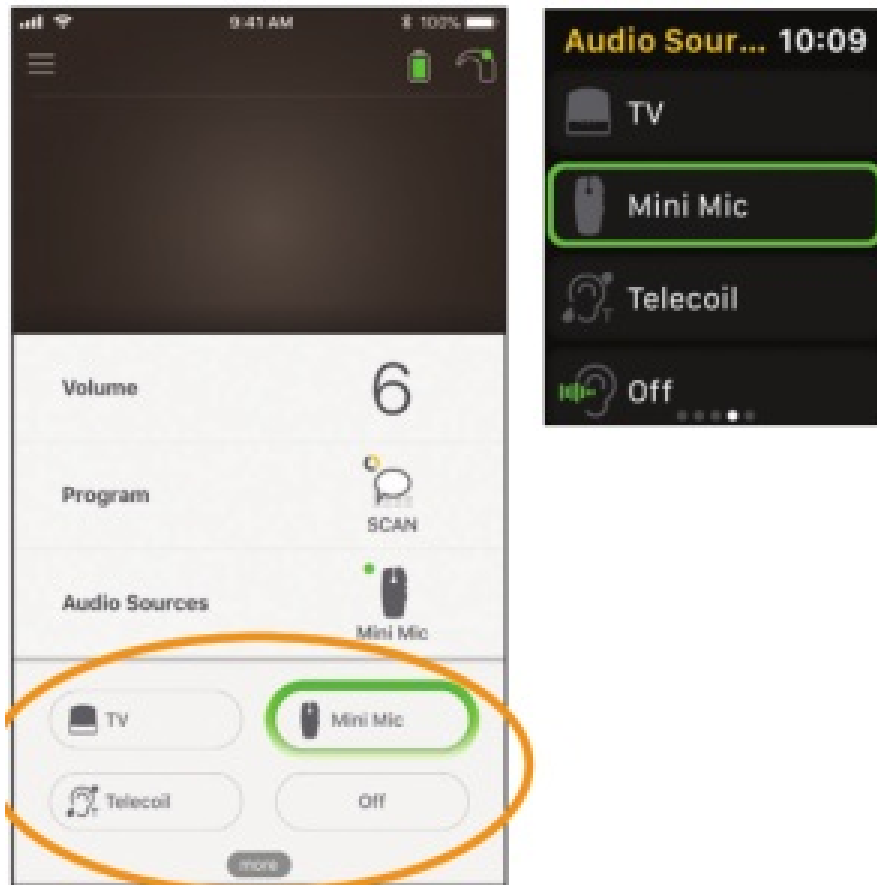
Change program

1. Tap **Program** to open its control panel.
2. Tap the icon for the program you want to use.



Stream audio

1. Tap **Audio Sources** to open its control panel.
2. Tap the icon for the audio source you want to use.

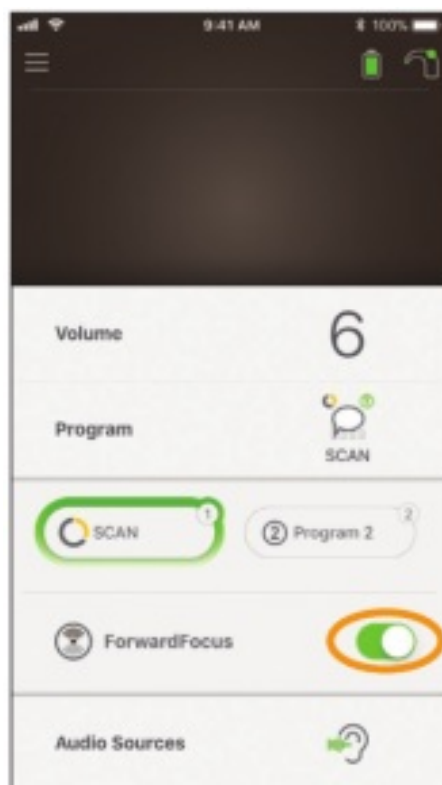


TIP



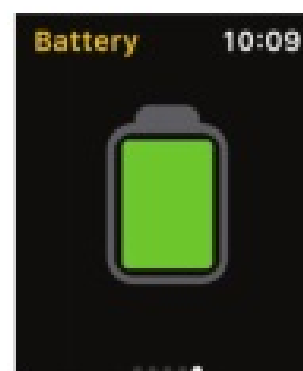
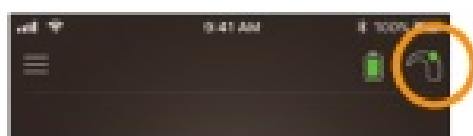
Tap **Off** or **X** to stop streaming audio and return to the previous program.

In Use ForwardFocus, replace the second-page image with the following (Apple Watch screen added):



Check status

Tap the icon to open the **Status** screen.



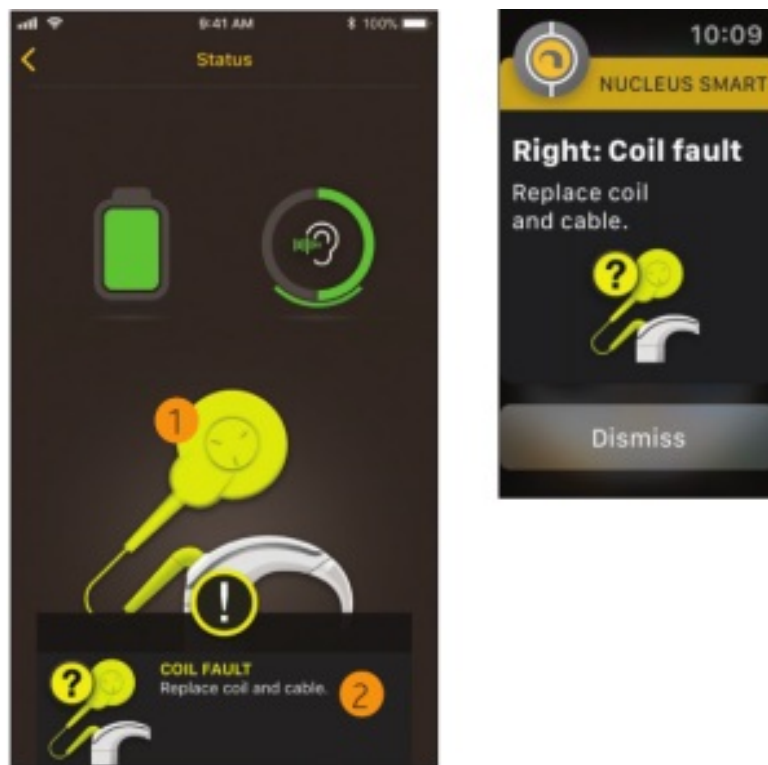
1. Sound processor battery level.
2. Sound level being delivered to the sound processor. Icon displays source (e.g. microphones, telecoil, wireless)

accessory). The colored bar indicates level.

3. Sound processor status indicator:

- Green tick indicates no faults

If your sound processor has a fault, you will see a screen like this:



1. Sound processor part with the fault displays in yellow.
2. Description of fault and suggested solution.

Notes

Hear now. And always



Cochlear Ltd (ABN 96 002 618 073) 1 University Avenue, Macquarie University, NSW 2109, Australia

Tel: +61 2 9428 6555 Fax: +61 2 9428 6352

Cochlear Ltd (ABN 96 002 618 073) 14 Mars Road, Lane Cove, NSW 2066, Australia

Tel: +61 2 9428 6555 Fax: +61 2 9428 6352



Cochlear Deutschland GmbH & Co. KG Karl-Wiechert-Allee 76A, 30625 Hannover, Germany

Tel: +49 511 542 770 Fax: +49 511 542 7770

Cochlear Americas 13059 E Peakview Avenue, Centennial, CO 80111, USA

Tel: +1 303 790 9010 Fax: +1 303 792 9025

Cochlear Canada Inc 2500-120 Adelaide Street West, Toronto, ON M5H 1T1, Canada

www.cochlear.com

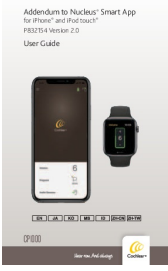


ACE, Advance Off-Stylet, AOS, AutoNRT, Autosensitivity, Beam, Bring Back the Beat, Button, Carina, Cochlear, Cochlear software, Codecs, Contour, Contour Advance, Custom Sound, ESPrit, Freedom, Hear now. And always, Hugfit, Hybrid, Invisible Hearing, Kanso, MET, MicroDrive, MP3000, myCochlear, SmartSound, NRT, Nucleus, Outcome Focused Fitting, Off-Stylet, Slimline, SmartSound, Softip, SPrint, True Wireless, the elliptical logo, and Whisper are either trademarks or registered trademarks of Cochlear Limited. Adium, Baha, Baha SoftWear, BCDrive, DermaLock, EveryWear, SoundArc, Vistafix, and WindShield are either trademarks or registered trademarks of Cochlear Bone Anchored Solutions AB. App Store, Apple, iPhone, and iPod touch are trademarks of Apple Inc, registered in the U.S. and other countries.

© Cochlear Limited 2019



Documents / Resources

	<p>Cochlear Addendum to Nucleus Smart App for iPhone and iPod touch [pdf] User Guide Cochlear, Addendum to Nucleus, Smart App, for, iPhone, and, iPod touch, P832154, Version 2.0</p>
---	---