

Cobra®
SC250R
True 4K
Rear View
Camera



Cobra SC250R True 4K Rear View Camera User Guide

[Home](#) » [Cobra](#) » Cobra SC250R True 4K Rear View Camera User Guide 

Contents

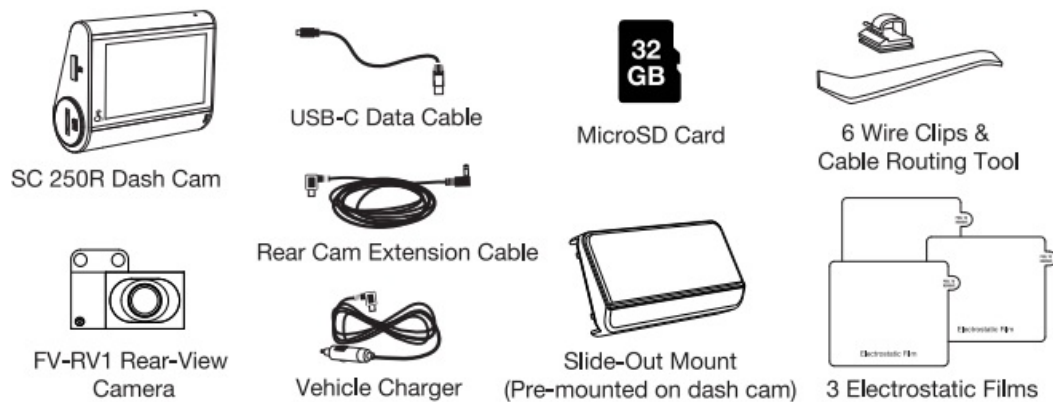
- [1 Cobra SC250R True 4K Rear View Camera](#)
- [2 What's Included](#)
- [3 Windshield Mounting](#)
- [4 Camera Tips](#)
- [5 SC 250R Features](#)
- [6 Powering Up the SC 250R](#)
- [7 Drive Smarter® App](#)
- [8 Documents / Resources](#)
 - [8.1 References](#)



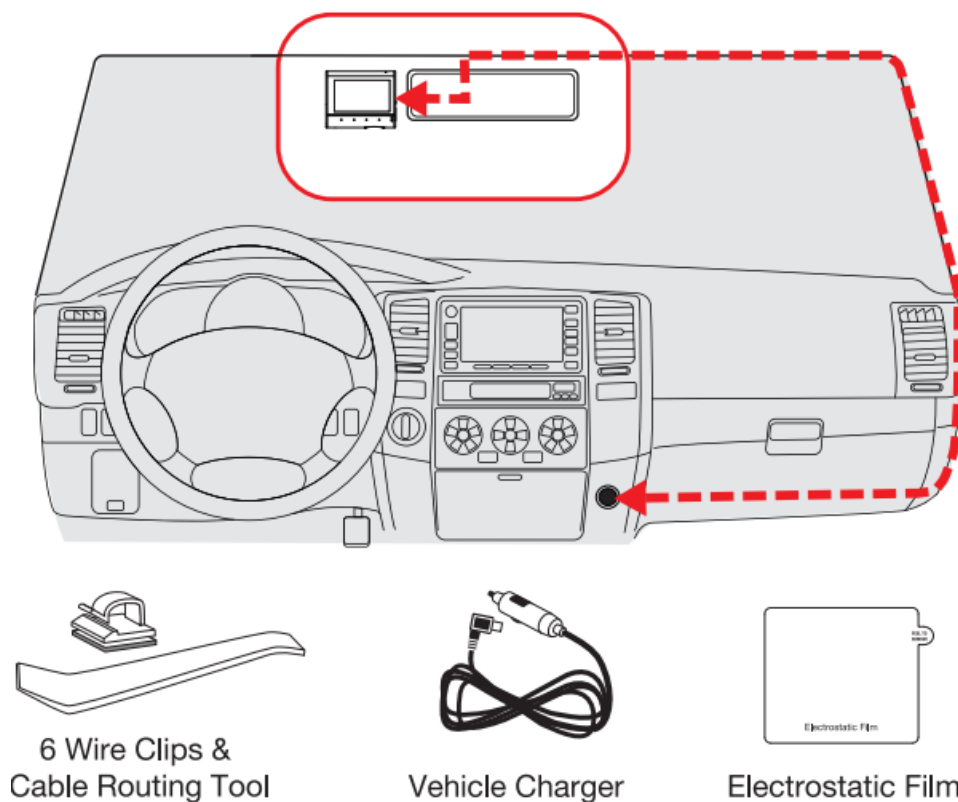
Cobra SC250R True 4K Rear View Camera



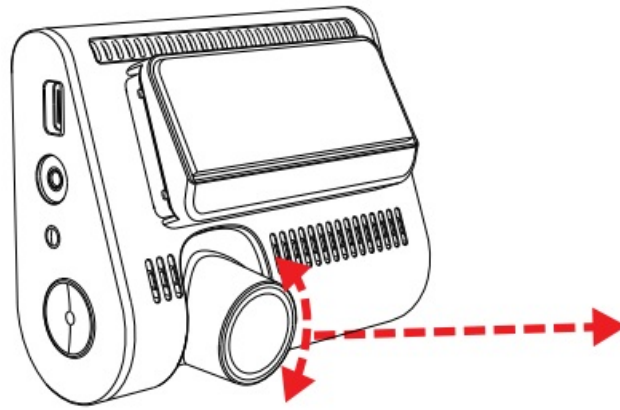
What's Included



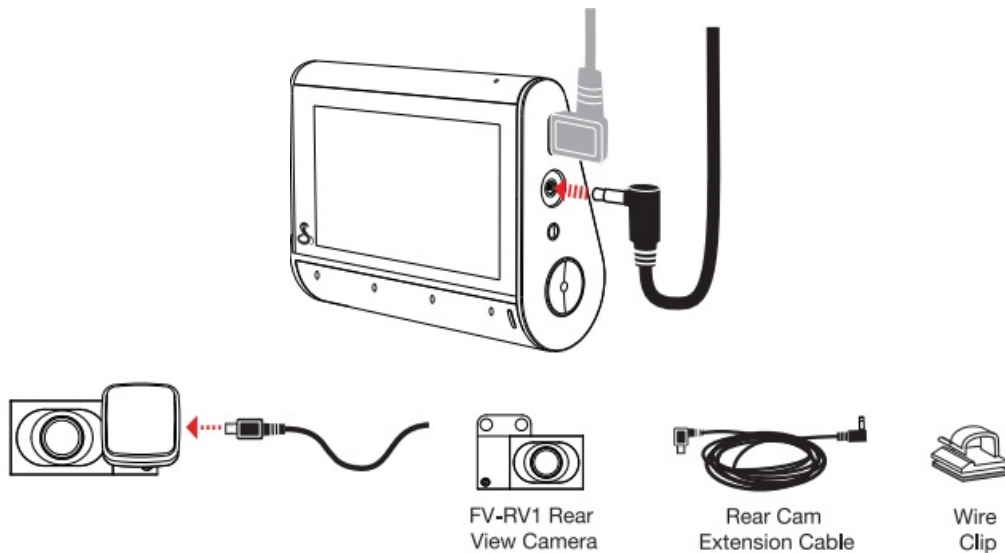
Windshield Mounting



- Find an area on your vehicle's windshield that is centrally located and close to the top of the windshield. Make sure the mounting area on the windshield is clean. The dash cam should be mounted so the display is easily visible to the driver.
- **(Optional:** Place the included electrostatic film on the desired location for a semi-permanent install).
- Plug the power cable into the dash cam and then route the power cable along the headliner using the included tool and cable routing clips as needed.



- Rotate the front dash cam lens so that it is parallel to the road.
- For a View of the Road Behind You Connect the extension cable to the video input port on the dash cam
- Route the extension cable along the headliner or floor-to-the-rear window
- Attach FV-RV1 rear camera to the vehicle's back window
- Please position the dash cam on the windshield in the orientation below.
- Rotate toward the road for the best view.

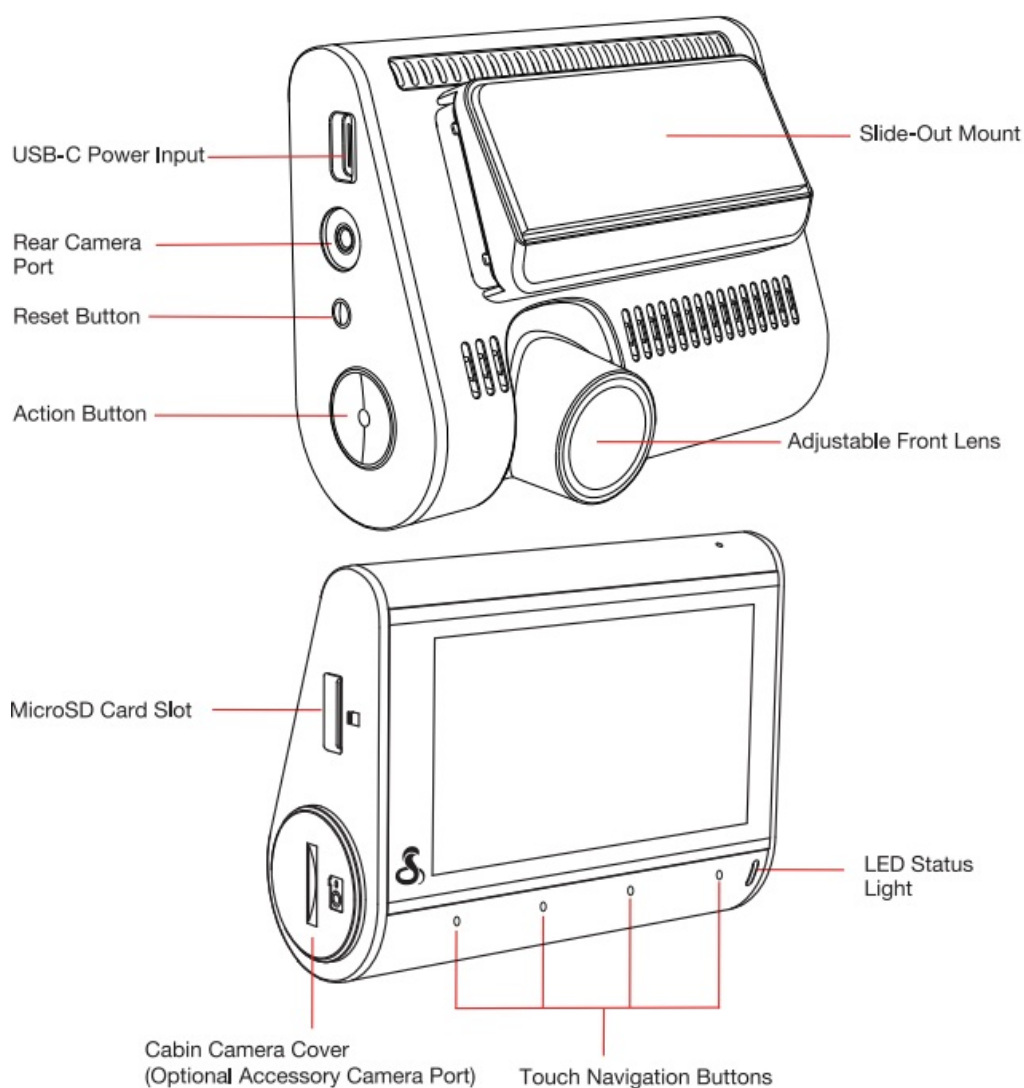


Camera Tips

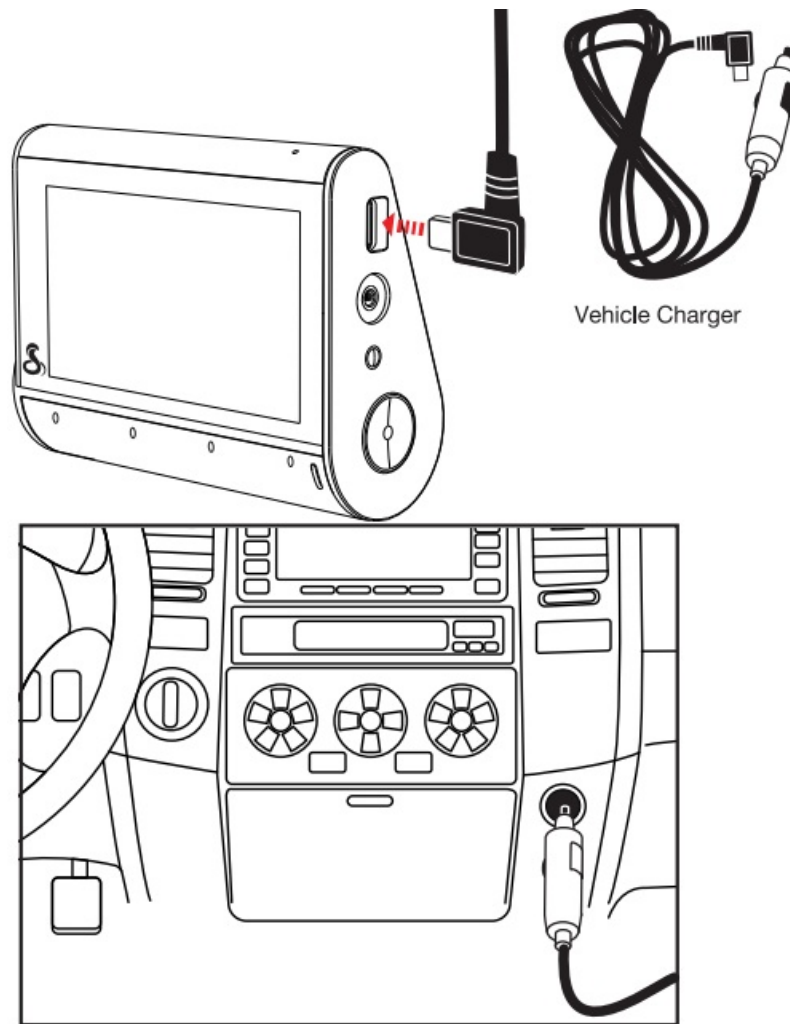
- Your dash cam features continuous loop recording, which deletes your oldest videos on the included microSD card to make space for new recordings.
- Save your favorite clips from being overwritten by pressing the Action Button.
- If you need to format the microSD card, please do so in the dash cam itself within the settings menu. Do not format the microSD card on your PC.
- The dash cam may occasionally prompt you to format your microSD card. This is done to ensure continuous recording operation, but this action will delete your saved footage.
- Before formatting, download and save your favorite clips using the Drive Smarter® app or by connecting the dash cam to your PC with the included data cable.
- Parking Mode requires a hardwire connection to the vehicle's battery or OBD-II port to power the dash cam while the vehicle is off (Hardwire Kit available on Cobra.com).
- Parking Live View requires an internet connection for the dash cam (in-vehicle hotspot or nearby WiFi access point) to stream a live feed from the dash cam to the account holder's Drive Smarter app.
- Please consult the owner's manual for more details.

- If upgrading your microSD card, please visit Cobra.com for a list of compatible cards.

SC 250R Features



Powering Up the SC 250R



Connect the USB-C cable to the dash cam and plug the power adapter into the vehicle's 12V port

Drive Smarter® App



- Once the dash cam is powered on, follow the on-screen setup instructions to download and connect to the Drive Smarter® app.
- A connection to the Drive Smarter® app is required to access features like 360 Alerts, Mayday Alert, Parking Mode Notifications, and Live View.
- Your Cobra® SC 250R pairs with the Drive Smarter® app.

DRIVE SMARTER® APP FEATURES: 360 Alerts

- Radar, speed, and red light camera alerts

- **Heads-Up Navigation**
 - Plan routes and easily view upcoming turns
- **Cloud Video Management**
 - Manage and share footage from your phone
- **Over-The-Air Updates**
 - Update your camera with the latest firmware and features



Download
DRIVE SMARTER®



Full manual available at: www.cobra.com/manuals

FCC ID: BBOSC250, IC#906A-SC250, HVIN: SC250 can be found on the device display.

1. Power on the device.
2. Select the Settings icon on the bottom right.
3. Navigate to and select the About menu item.

- ©2024 Cobra Electronics Corporation. Cobra and the snake design are proprietary trademarks of Cobra Electronics Corporation, USA. Other trademarks and trade names are those of their respective owners.
- Cobra Electronics Corporation™ is a trademark of Cobra Electronics Corporation, USA.
- Drive Smarter® is a registered trademark of Cedar Electronics Corporation.
- Apple and the Apple logo are trademarks of Apple Inc. Registered in the U.S. and other countries. App Store is a service mark of Apple Inc. Android and Android Auto are trademarks of Google LLC.
- Compatible Android phone and compatible active data plan required.
- The Bluetooth® word mark and logos are registered trademarks of Bluetooth SIG, Inc. and any use of such marks by Cobra Electronics Corporation is under license.
- Features, Specifications, and prices are subject to change without notice.
- The Driver Awareness Alert display feature is subject to US Patent Numbers 8,842,004 and 8,970,422 and additional pending US Patent Applications.

Documents / Resources

	Cobra SC250R True 4K Rear View Camera [pdf] User Guide SC250R, SC250R True 4K Rear View Camera, True 4K Rear View Camera, 4K Rear View Camera, Rear View Camera, View Camera, Camera
--	---

References

- [User Manual](#)

