



Cobra SC 400 Smart Dash Camera User Guide

[Home](#) » [Cobra](#) » Cobra SC 400 Smart Dash Camera User Guide 



SC 400
SMART DASH CAN



QUICK START GUIDE

THANK YOU!

For purchasing the new
COBRA® SC 400

Download Drive Smarter to Get Started

With the Drive Smarter app you can view, edit and share from your smartphone or desktop plus share and receive real-time driver alerts. Download today!



drivesmarter.com/downloads



Download the full SC 400 manual at: cobra.com/manuals

FCC ID:BBOSC400, IC#:906A-SC400. THIS DEVICE COMPLIES WITH PART 15 OF THE FCC RULES. OPERATION IS SUBJECT TO THE FOLLOWING TWO CONDITIONS:

1. THIS DEVICE MAY NOT CAUSE HARMFUL INTERFERENCE, AND
2. THIS DEVICE MUST ACCEPT ANY INTERFERENCE RECEIVED INCLUDING INTERFERENCE THAT MAY CAUSE UNDESIRED OPERATION.

FCC NOTE: Modifications not expressly approved by the manufacturer could void the user's FCC granted authority to operate the equipment.

Cobra® and the snake design are registered trademarks of Cobra Electronics Corporation, USA. Cobra Electronics Corporation™ is a trademark of Cobra Electronics Corporation, USA.

Amazon, Alexa and all related marks are trademarks of Amazon.com, Inc. or its affiliates.

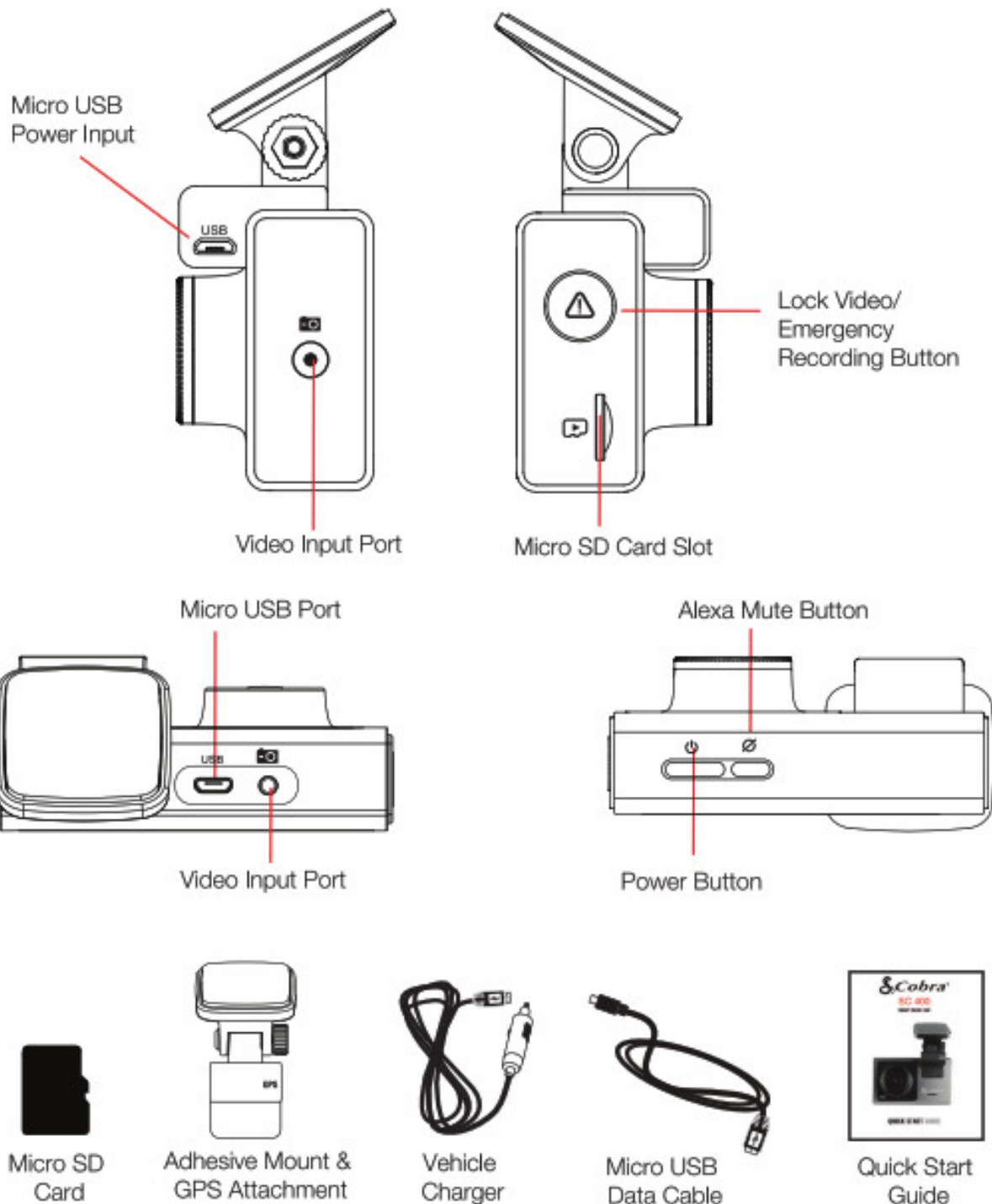
Other trademarks and trade names are those of their respective owners.

©2021 Cobra Electronics Corporation

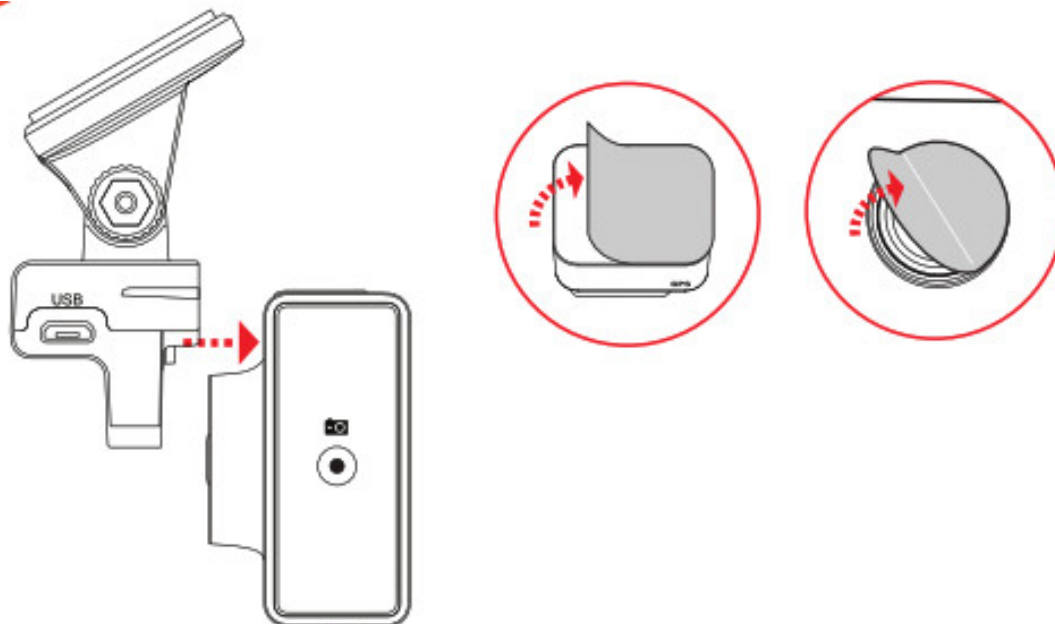
Contents

- [1 SC 400 Features](#)
- [2 Button Functions \(Recording\):](#)
- [3 Button Functions \(Recording Stopped\):](#)
- [4 Voice Commands](#)
- [5 Camera Tips](#)
- [6 For Cabin View*](#)
- [7 For a View of the Road Behind You*](#)
- [8 Documents / Resources](#)
- [9 Related Posts](#)

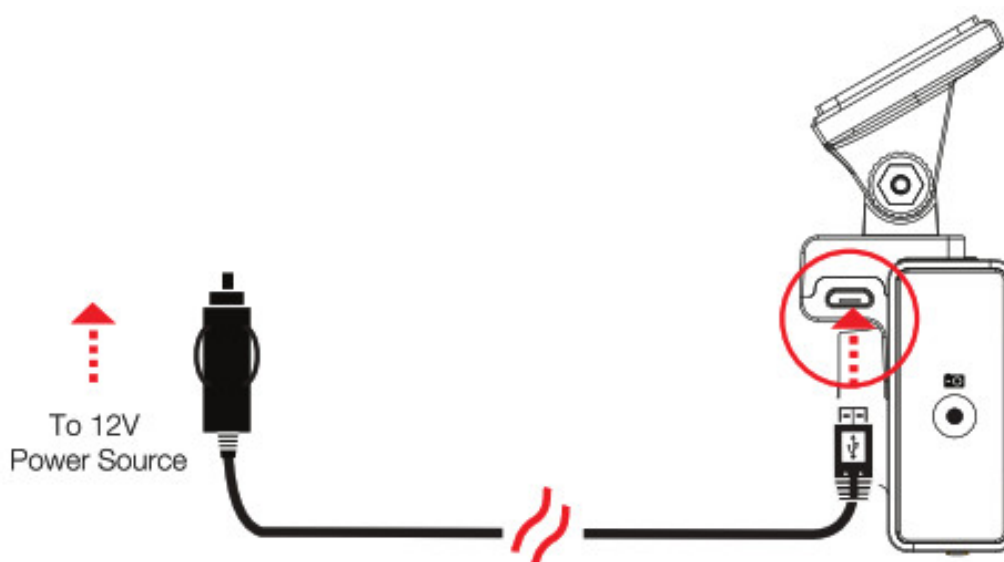
SC 400 Features



1. Attach the GPS mount to the main camera and remove the protective film from the mount and camera lens



2. Connect the Micro USB cable into the GPS mount plus the power adapter into your vehicle's 12V port.

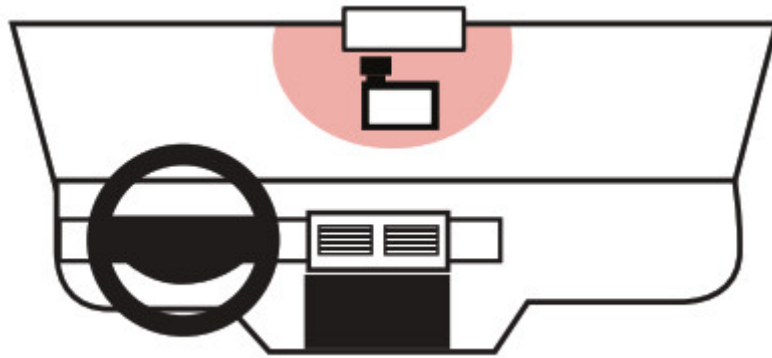


3. Follow the instructions on the camera screen to set up the Drive Smarter app and pair with Alexa. Please ensure your phone's volume is turned up in order to hear Alexa's responses

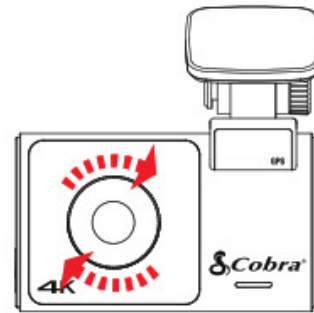
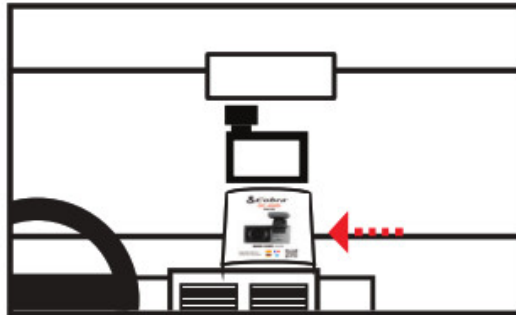


Please ensure your phone's volume is turned up in order to hear Alexa's responses

4. Attach camera to windshield

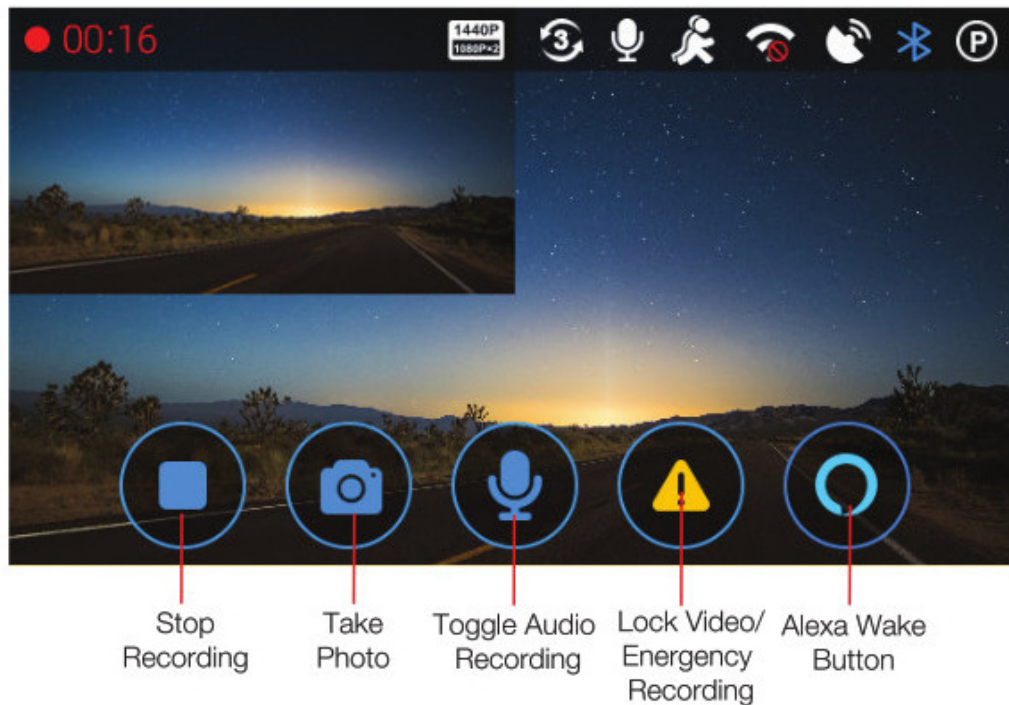


5. Please place this Quick Start Guide onto your dashboard and use it to check for glare in the camera's live-view screen.



Rotate front bezel to reduce glare

Bottom Functions (Recording):



Bottom Functions (Recording Stopped):



Voice Commands

The SC 400 will respond to certain local voice commands so you can stay focused on the road ahead. Try the following voice commands. This function can be enabled in the camera's setting menu.

Say	Camera Action
"Front Video On"	Front-view camera is displayed on screen
"Rear Video On"	Rear-view camera is displayed on screen (optional accessory camera required)
"Record Video"	Begins loop-recording
"Lock Video"	Camera locks the video and tags it as a Favorite
"Screen On"	Turn display on
"Screen Off"	Turn display off
"Take Photo"	Takes photo and saves to the "Photos" folder

Camera Tips

- The Dash Cam features continuous loop recording – which deletes your oldest videos to make space for new recordings. Save your favorite clips from being overwritten by pressing the Lock/Emergency Recording Button or by using the "Lock Video" voice command.
- If you need to format the SD card, please do so in the camera itself within the settings menu. Do not format the SD card on your PC.
- The Dash Camera may occasionally prompt you to format your SD card. This is done to ensure smooth Dash Camera operation, but will delete your saved footage. You can download and save your favorite clips using the Drive Smarter App or by connecting the camera to your PC.

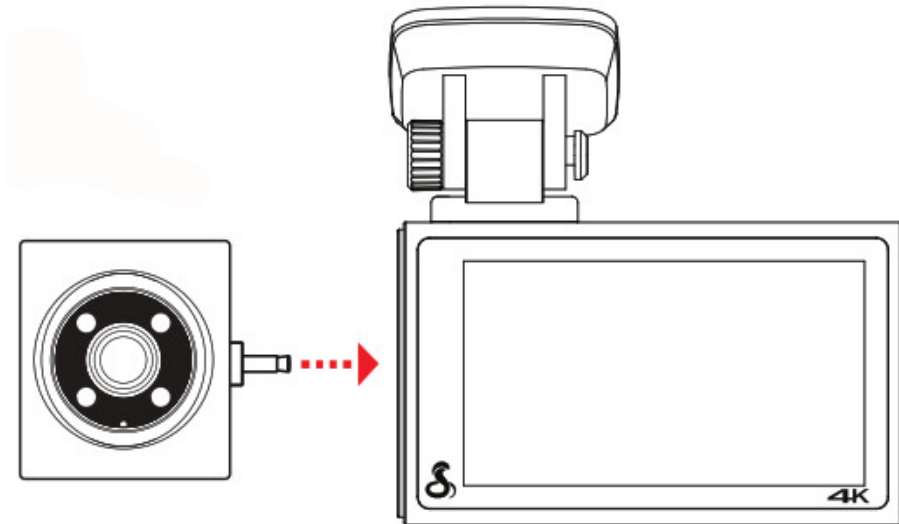


If upgrading your SD card, please visit Cobra.com for a list of compatible cards.

Attaching Accessory Cameras

For Cabin View*

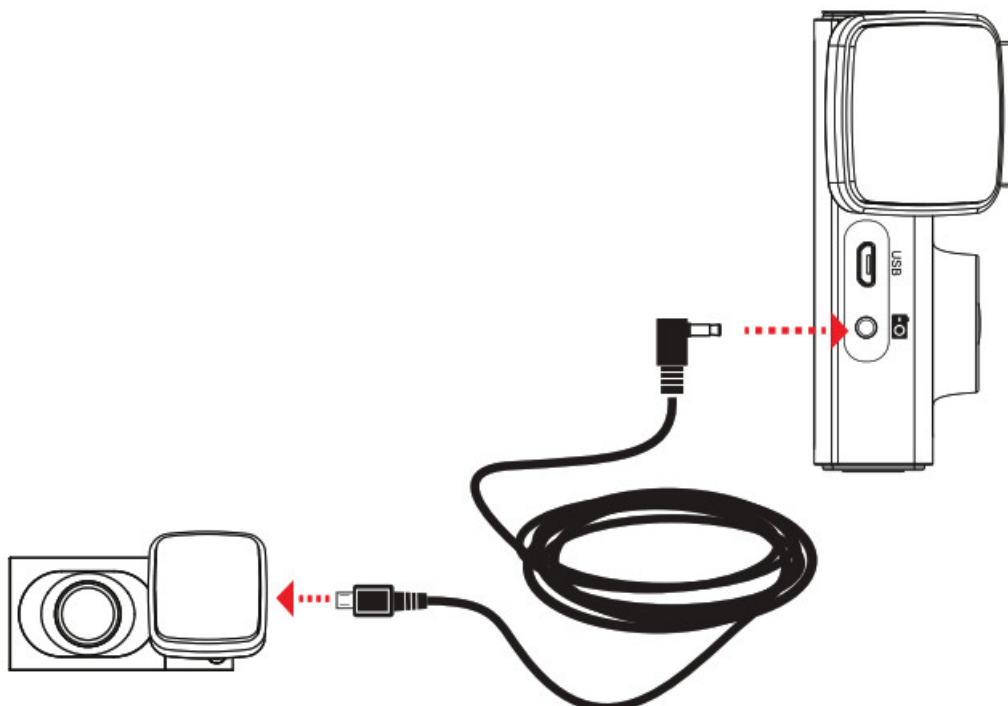
Connect cabin camera to the video input port on the SC 400



For a View of the Road Behind You*



1. Connect extension cable to the video input port on the dash cam
2. Connect extension cable to the rear camera
3. Attach FV-RV1 rear camera to the vehicle's back window

Warning: Please position the camera on the rear windshield so it faces out of the vehicle in the orientation shown



*Additional accessory cameras sold separately

Documents / Resources

	Cobra SC 400 Smart Dash Camera [pdf] User Guide SC 400, Smart Dash Camera
	Cobra SC 400 Smart Dash Camera [pdf] User Guide SC 400, Smart Dash Camera