



Cobra SC 100 Smart Dash Camera User Guide

[Home](#) » [Cobra](#) » Cobra SC 100 Smart Dash Camera User Guide 

Contents

- [1 Cobra SC 100 Smart Dash Camera](#)
- [2 DRIVE SMARTER® APP FEATURES:](#)
- [3 SC 1 00 Features](#)
- [4 Documents / Resources](#)
- [5 Related Posts](#)



Cobra SC 100 Smart Dash Camera



Thank you for purchasing the Cobra® SC 100

DRIVE SMARTER® APP FEATURES:

- **Real-Time Driver Alerts**
Radar, speed, and red light camera alerts
- **Cloud Video Management**

Manage and share footage from your phone

- **Emergency Mayday Notification**

Alert someone in case of an accident

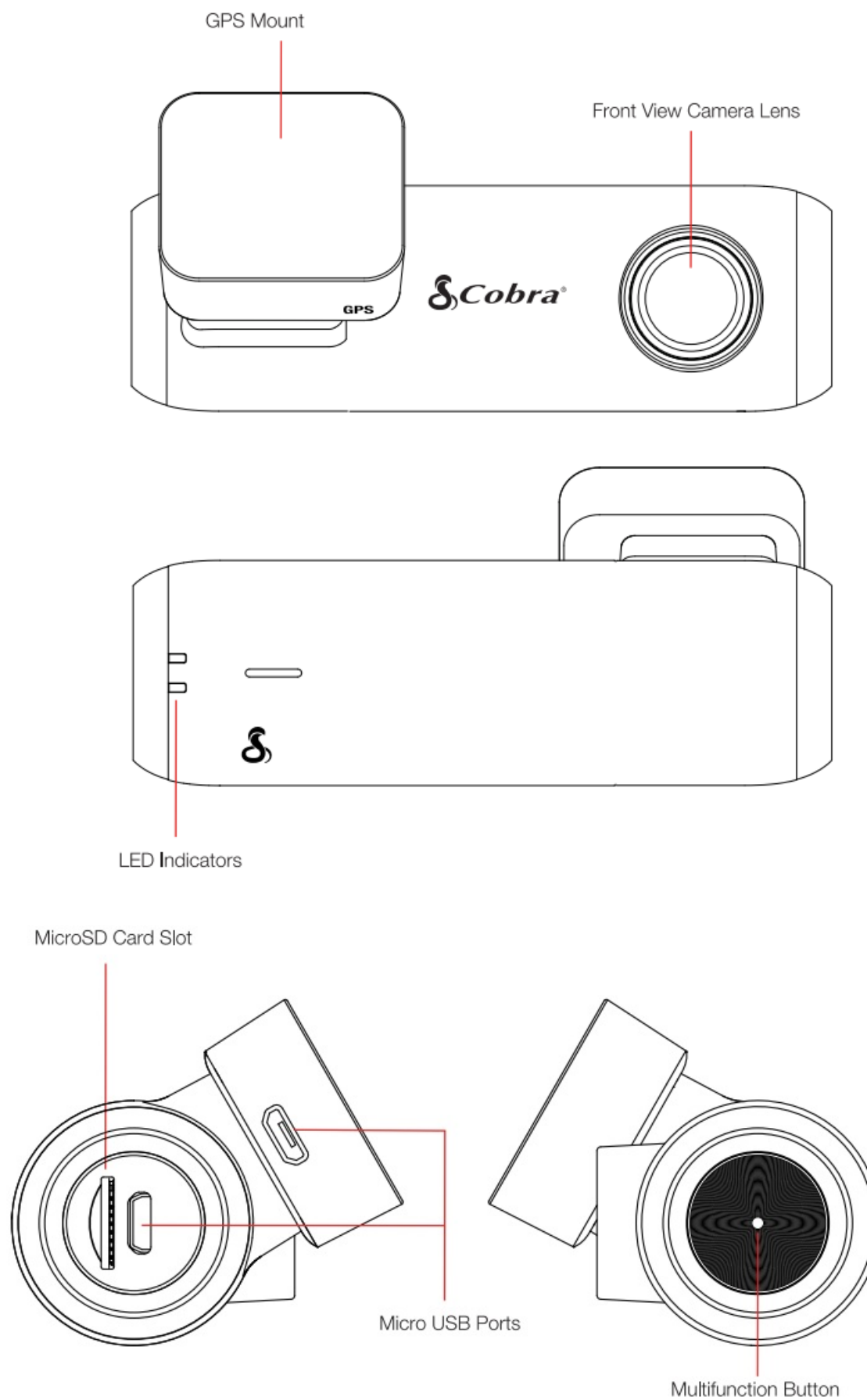
- **Turn-by-Turn Navigation**

Plan routes and easily view upcoming turns

- **Over-The-Air Updates**

Update your camera with the latest firmware and features

SC 1 00 Features

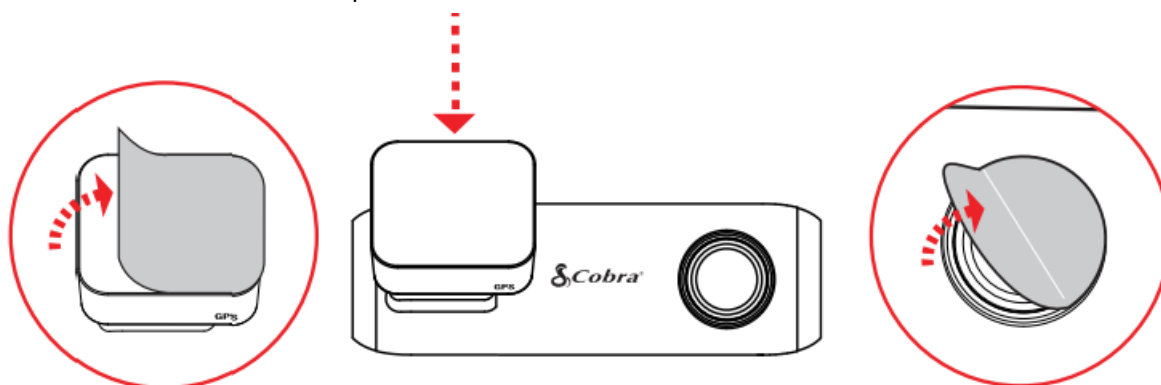


Button Press	Camera Action
Press and Hold 3 seconds	Power on/off
Short Press (Not Recording)	Begin Recording
Short Press (During Recording)	Lock Video
2x Short Press	Take Photo
Press and Hold 10 seconds	Reset

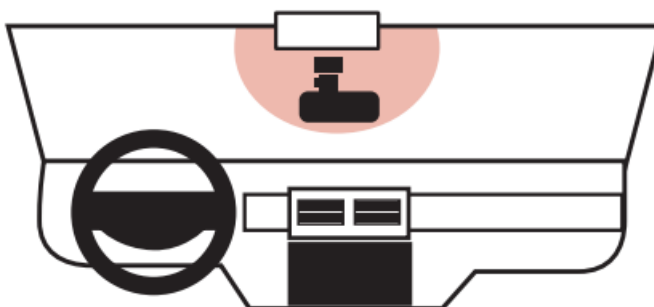
- 8GB MicroSD Card
- GPS Mount
- Vehicle Charger
- Micro USB Data Cable
- Quick Start Guide



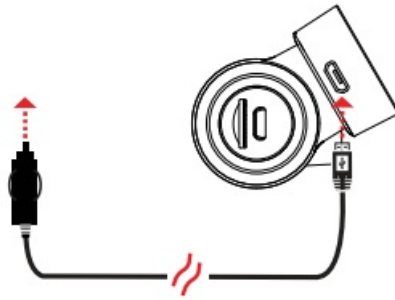
1. Attach GPS Mount and remove the protective film from mount and camera lens



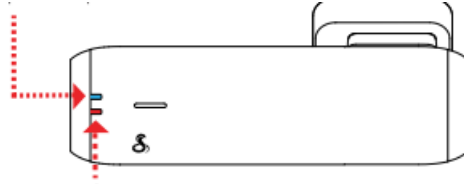
2. Attach camera to windshield



3. Connect to GPS Mount To 12V Power Source :

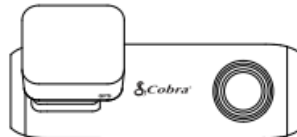


4. Camera automatically turns on and begins recording Blue LED indicator lights when camera is powered up



Red Indicator blinks when camera is recording

5. View the camera's videos and adjust settings using the Drive Smarte app



- Adjust Volume
- Change Language
- Change Resolution
- Format SD Card
- Update Firmware

Scan QR Code For Additional Languages:



Documents / Resources

	<p>Cobra SC 100 Smart Dash Camera [pdf] User Guide SC 100, Smart Dash Camera, SC 100 Smart Dash Camera, Dash Camera, Camera</p>
---	--