



Cobra 6466269 On/Off Controller with Fast Charge USB Owner's Manual

[Home](#) » [Cobra](#) » Cobra 6466269 On/Off Controller with Fast Charge USB Owner's Manual 



Remote On/Off Controller
with Fast Charge USB
Owners Manual



Contents

- [1 INTRODUCTION](#)
- [2 HOW YOUR REMOTE CONTROLLER WORKS](#)
- [3 PRODUCT SERVICE AND SUPPORT](#)
- [4 WHAT'S IN THE BOX](#)
- [5 Remote Controller Features](#)
- [6 Connecting the Remote Controller to your Power Inverter](#)
- [7 REMOTE DISPLAY MESSAGING](#)
- [8 COBRA PRO SERIES REMOTE DISPLAY MESSAGING](#)
- [9 COBRA PURE SINE OR POWER SERIES REMOTE DISPLAY MESSAGING](#)
- [10 TROUBLESHOOTING GUIDE](#)
- [11 SPECIFICATIONS](#)
- [12 WARRANTY & TRADEMARK ACKNOWLEDGEMENT](#)
- [13 Documents / Resources](#)
 - [13.1 References](#)
- [14 Related Posts](#)

INTRODUCTION

Thank you for purchasing the Cobra Remote On/Off Controller with Fast Charge USB. When used properly, this Cobra product will add convenience to your inverter experience and give you reliable power to keep your devices powered and charged. Please read this manual thoroughly before you install and set up your new power inverter.

HOW YOUR REMOTE CONTROLLER WORKS

The Cobra Remote On/Off Controller with Fast Charge USB is designed to remotely enable and monitor your

Cobra power inverter* while also acting as a hub to fast charge your smartphone and other devices. Compatible with Cobra PRO, PURE SINE, and POWER inverters, your Remote On/Off Controller conveniently connects to your inverter with a 15' cable so you can access your inverter from anywhere inside your vehicle. With a built-in audible alarm that sounds when voltage, temperature, or reverse polarity issue occurs with the battery or inverter, you'll be able to operate your devices and appliances with confidence. Four mounting options allow you to install the remote controller anywhere you want – a permanent or temporary installation inside your vehicle, in a cup holder while driving, or clipped onto a back seat.

*** Use only with Cobra PRO, PURE SINE, or POWER series inverters.**

PRODUCT SERVICE AND SUPPORT

For any questions about operating or installing this new Cobra product, PLEASE CONTACT COBRA FIRST...do not return this product to the retail store. The contact information for Cobra will vary depending on the country in which you purchased and utilize the product. For the latest contact information, please go to www.cobra.com/support or call 1-800-543-1608.

If your product should require factory service, please go to www.cobra.com/support and follow the instructions.

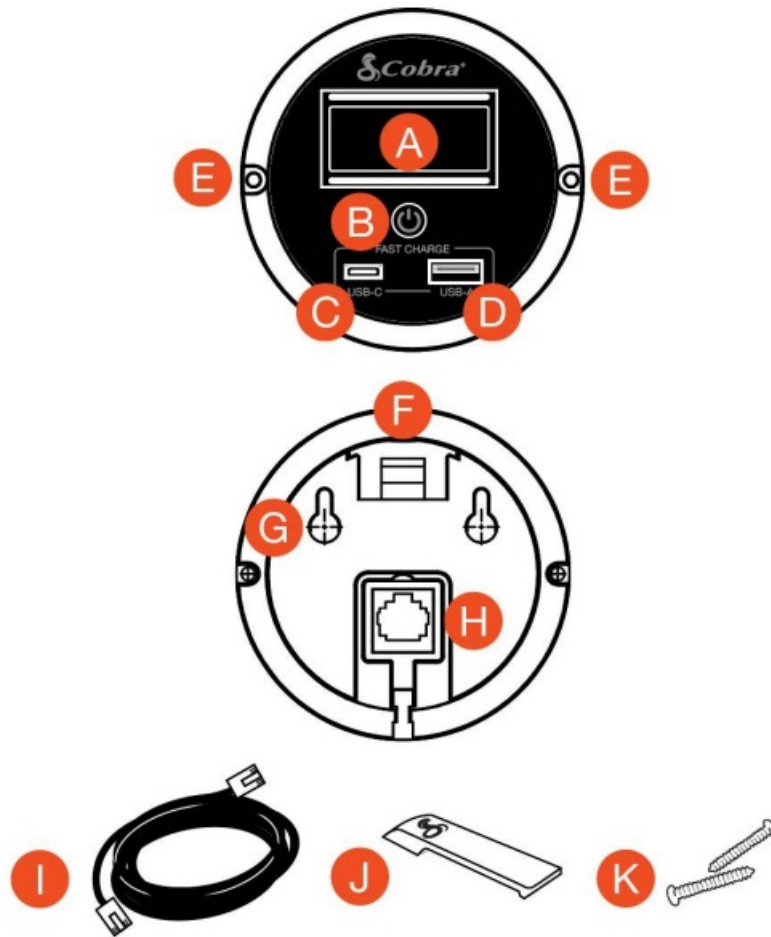
WHAT'S IN THE BOX

- Cobra CPIALCDG1 Remote Controller
- 15 Ft. RJ-45 Cable
- Clip Mount
- (2) M3.5 Screws for Flush or Keyhole Mounting
- Quick Start Guide

Works with Cobra Power Inverter Models:

CPI400PSW, CPI500W, CPI1500W, CPI2500W and CPI3000W.

Remote Controller Features



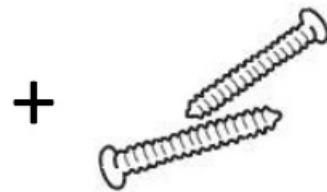
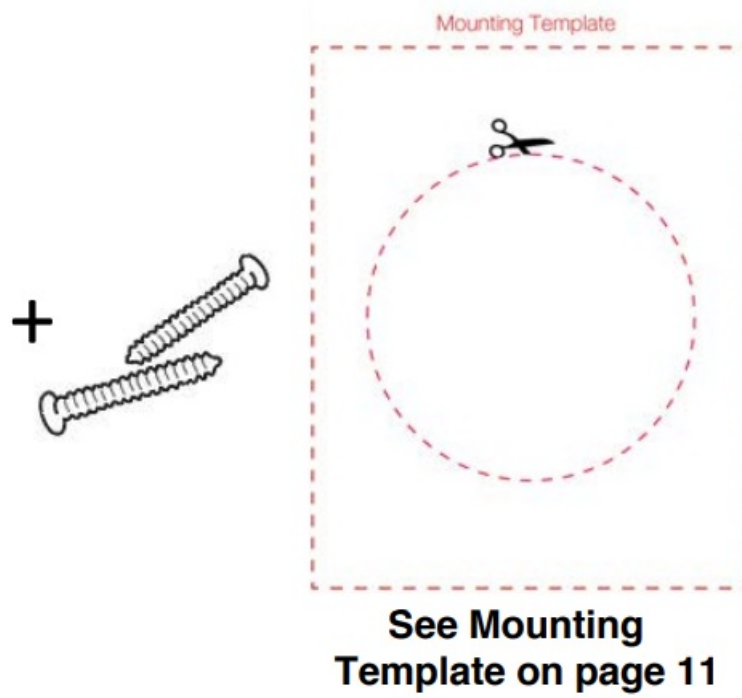
A. LCD Display
 B. Power Button
 C. Fast Charge USB-C*
 D. Fast Charge USB-A*
 E. Flush Mounts
 F. Clip Mount for Clip Mounting Option

G. Keyhole Mount
 H. RJ-45 Remote Control Cable Jack
 I. RJ-45 Remote Control Cable
 J. Clip Mount
 K. M3.5 Screws

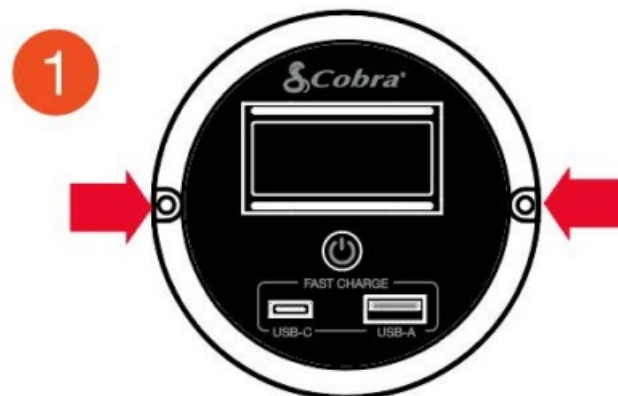
* = Fast Charge works only on devices capable of supporting a charge up to 10W

4-Point Mounting System

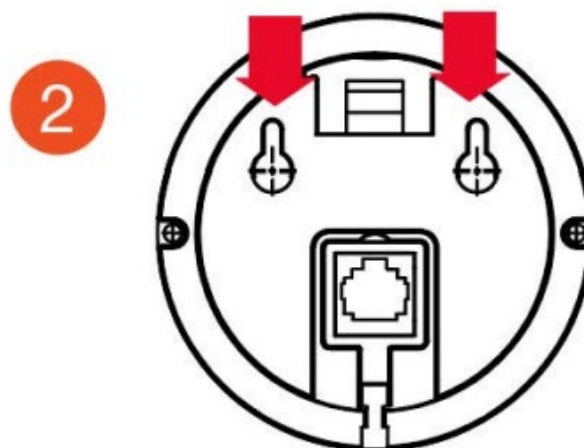
Whether you own a standard vehicle, RV, Professional Truck, or Camper, Cobra gives you (4) Mounting options to remotely turn your inverter on and off as well as charge your devices from anywhere in your vehicle:



1. **Flush Mounting** for a permanent installation Note: for accurate installation, M please use the template provided in this guide

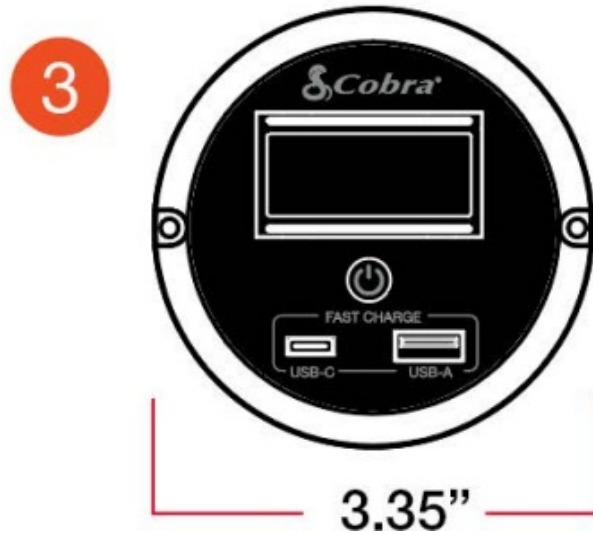


2. **Keyhole Mount** for On Wall Mounting



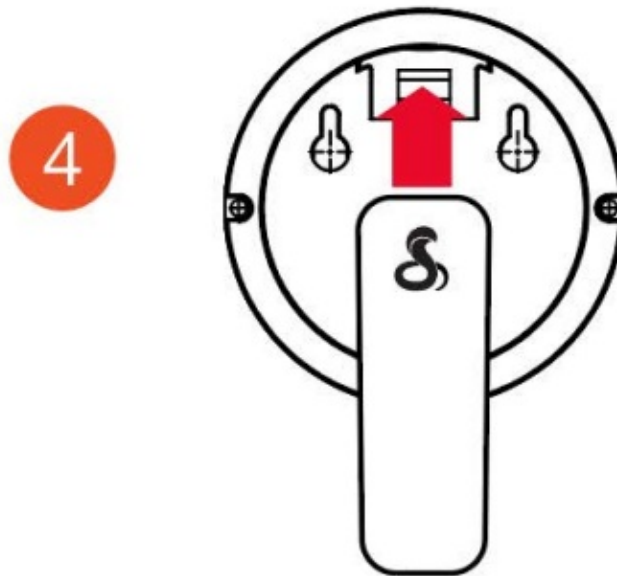
3. **Cup Holder Mounting**

to conveniently charge your Smartphone while driving. This can also rest on a flat surface inside your RV, Truck Cab or camper



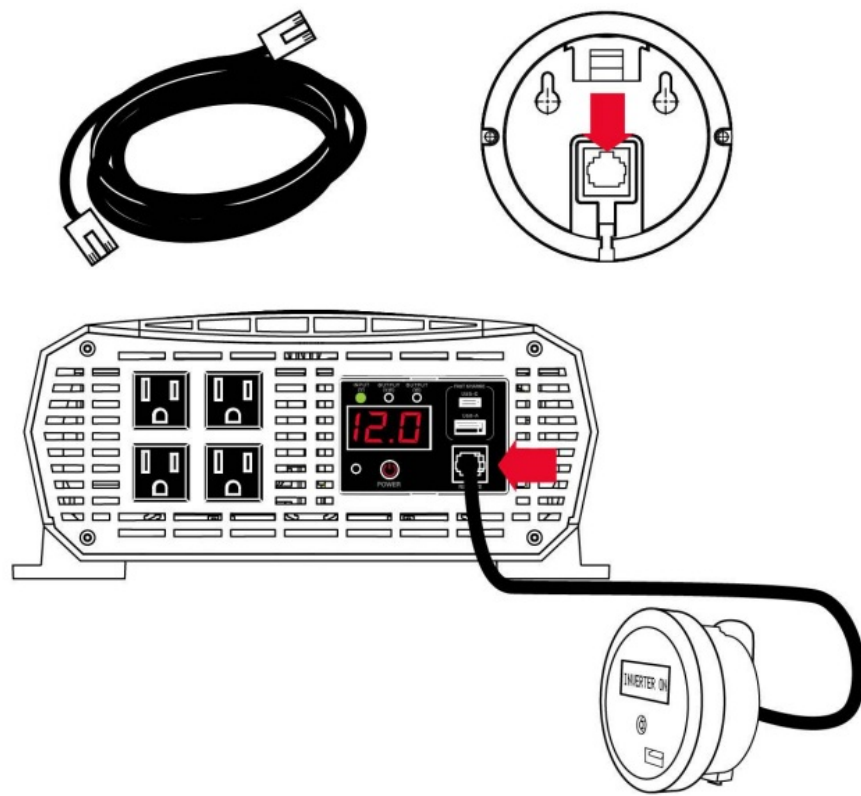
4. Clip Mount

to the back seat or other areas of the vehicle for passengers to charge their smartphones and other devices



Connecting the Remote Controller to your Power Inverter

1. Using the RJ-45 Remote Control Cable, connect the Remote On/Off Controller to the RJ-45 cable jack (Labeled REMOTE) on the front of your power inverter
2. Press the POWER button on the Remote On/Off Controller to turn on your inverter
3. When the inverter is powered on the Input Voltage LED is green



Once the remote is connected, you can turn the power ON or OFF from both the inverter and the remote controller. **On smaller models having a push-button ON/OFF switch, it does not matter whether the power button is in the ON or OFF position when using the remote.** The remote will function as your ON or OFF switch when the power button is in either position.

REMOTE DISPLAY MESSAGING

Your Cobra Remote On/Off Controller with Fast Charge USB is compatible with all Cobra PRO, PURE SINE, and POWER Series power inverters. These inverters, when used with the Remote On/Off Controller, will support the Remote's Fast Charge and audible alarm features as well as turn the inverter ON when in OFF mode. Additionally, if you purchased a PRO Series Inverter, the LCD will display INPUT and OUTPUT as well as fault messaging as shown below.

If you purchased a PURE SINE 400W or POWER 500W Inverter, see the COBRA PURE SINE OR POWER SERIES REMOTE DISPLAY MESSAGING section on page 9 for details.

COBRA PRO SERIES REMOTE DISPLAY MESSAGING

Standby Mode

When you plug in the Remote On/Off Controller with Fast Charge USB and press the power button to ON, the display will show AC Output (Watts being used) and the DC Input (Battery Volts). The images below show the messaging on the LCD display when the remote is turned ON or OFF.



Inverter ON



Inverter OFF

NOTE: Backlight automatically turns off 5 seconds after pressing the POWER button.

Fault Messaging

Your inverter and remote are equipped to sound an alarm to alert you when power requirements or battery voltage is not in range. This is considered a “fault”. When this happens, both the inverter and remote alarms will sound, and if the fault is not addressed, the inverter will shut down and the remote will display a fault message. Below is a list of “faults” and the messaging that will appear on the LCD display when these faults occur.

	<p>DC Input Low Voltage Alarm (Default Setting) The alarm will sound when the battery is at 11.5V.</p>
	<p>DC Input Low Voltage Cutoff (Default Setting) The alarm will sound and the inverter will shut down when the battery is at 10.5V.</p>
	<p>DC Input Low Voltage Alarm (Alternate Setting) The alarm will sound when the battery is at 10.5V.</p>
	<p>DC Input Low Voltage Cutoff (Alternate Setting) The alarm will sound and the inverter will shut down when the battery is at 9.5V.</p>

	<p>DC Input High Voltage Alarm The alarm will sound when the battery is at 15.0V</p>
	<p>AC Output Short The alarm will sound and the inverter will shut down when the AC output is shorted.</p>
	<p>AC Output Overload The alarm will sound and the inverter will shut down when the AC output exceeds the inverter limits.</p>
	<p>Inverter Over Temperature The alarm will sound and the inverter will shut down when the inverter overheats.</p>
	<p>GFCI Trip The alarm will sound and the inverter will shut down when a Ground Fault is detected.</p>

COBRA PURE SINE OR POWER SERIES REMOTE DISPLAY MESSAGING

If you purchased a Cobra POWER 500W or PURE SINE 400W inverter, the remote display will display the operating status of your inverter when plugged in.



Inverter ON



Inverter OFF

NOTE: Backlight turns off after 5 seconds from pressing the POWER



Fault Definitions

When the Remote On/Off Controller is plugged into a PURE SINE 400W or POWER 500W inverter and a fault occurs due to Low Voltage, Over Voltage, Over Temperature or Battery Over Voltage, the remote and the inverter will sound an alarm, and the remote will show “ERROR CHECK INVERTER” on the display (as shown above). The alarm and “ERROR” message indicating an issue and the fault will need to be addressed in order to use and operate your inverter properly. Below is a list of faults that will trigger the alarm and “ERROR” message on the remote display.

- An alarm will sound on the remote and inverter when the following occurs:
 - **DC Input Low Voltage** – battery reaches 10.5V signaling you to charge the vehicle battery (this can be done by turning on the vehicle)

If an alarm occurs and your inverter continues to work with the above, this means the fault is occurring at the battery and needs to be immediately addressed. If the alarm is ignored, the remote will continue to display the ERROR message and the inverter will work until reaches its cutoff limit and shut down.
- An alarm will sound and the inverter will shut down when the following faults occur:
 - **DC Input Low Voltage Cutoff** – battery has reached 9.5V and needs to be recharged immediately
 - **DC Input High Voltage Cutoff** – when the battery reaches 15.5V (can occur when a momentary surge spikes the battery Voltage)
 - **AC Output Short** – AC output is shorted (short circuit)
 - **AC Output Overload** – AC output load exceeds inverter AC output load limits (try unplugging some of your devices)
 - **Inverter Over Temperature** – the inverter is overheating (check for proper ventilation)
 - **GFCI Trip** – a Ground Fault is detected

If the inverter shuts down, the “ERROR CHECK INVERTER” message will display on the remote.

TROUBLESHOOTING GUIDE

Problem/Symptom	Possible Cause	Troubleshoot
Remote will not turn ON	Remote cable connection, battery connection, or car battery needs recharging	1. Check cable connection at remote and inverter 2. If these are secure and the remote will still not turn on, check cable connection from the inverter to the battery or the CLA
Remote will not turn OFF	Power button not pushed hard enough or poor cable connection	1. Disconnect the remote from the inverter 2. Plug it back in again and Power ON
The inverter turns ON and Remote LCD on remote stays dark	Remote cable connection	1. Disconnect the remote from the inverter 2. Plug it back in again and Power ON
The inverter is sounding an alarm but no Error messages are showing on the LCD	Remote is being used with models that do not support this function	Display Error messages are only supported by PRO Series inverters. CPI500W and CPI400PSW Models do not support error messages
The USB port on the remote is not charging my device	Bad phone charging cable, loose connection or car battery charge is too low	1. Check cable connection from your device to the USB port 2. If still not working, check cable connection from the remote to the inverter 3. If 1. and 2. do not solve the problem, it is possible you need to recharge your car battery

If none of these solutions fix the problem you are having, please contact Product Service and Support online at www.cobra.com/support or call 1-800-543-1608

SPECIFICATIONS

Specifications:	COBRA REMOTE ON/OFF CONTROLLER
Model	CPIALCDG1
USB-A Output Port	5V/2A/10W
USB-C Output Port	5V/2A/10W
Operating Temperature	-10°C/14°F – 40°C/104°F
Storage Temperature	-40°C/-40°F – 65°C/149°F
Power Cable Length:	15-feet #16 AWG
Dimensions	3.35" x 3.35" x 1.64"
Net Weight	.11 lbs

WARRANTY & TRADEMARK ACKNOWLEDGEMENT

Limited Two-Year Warranty

For Products Purchased in the U.S.A.

Cobra Electronics Corporation warrants that its Cobra power inverter, and the component parts thereof, will be free of defects in workmanship and materials for a period of two years from the date of first consumer purchase. This warranty may be enforced by the first consumer purchaser, provided that the product is utilized within the U.S.A.

Cobra will, without charge, repair or replace, at its option, defective power inverters, products or component parts upon delivery to the Cobra Factory Service department, accompanied by proof of the date of first consumer purchase, such as a duplicated copy of a sales receipt.

You must pay any initial shipping charges required to ship the product for warranty service, but the return charges will be at Cobra's expense if the product is repaired or replaced under warranty. This warranty gives you specific legal rights, and you may also have other rights which may vary from state to state.

Exclusions: This limited warranty does not apply:

1. To any product damaged by accident.
2. In the event of misuse or abuse of the product or as a result of unauthorized alterations or repairs.
3. If the serial number has been altered, defaced, or removed.
4. If the owner of the product resides outside the U.S.A.

All implied warranties, including warranties of merchantability and fitness for a particular purpose, are limited in duration to the length of this warranty. Cobra shall not be liable for any incidental, consequential or other damages; including, without limitation, damages resulting from loss of use or cost of installation.

Some states do not allow limitations on how long an implied warranty lasts and/or do not allow the exclusion or limitation of incidental or consequential damages, so the above limitations may not apply to you.

For Products Purchased outside the U.S.A.

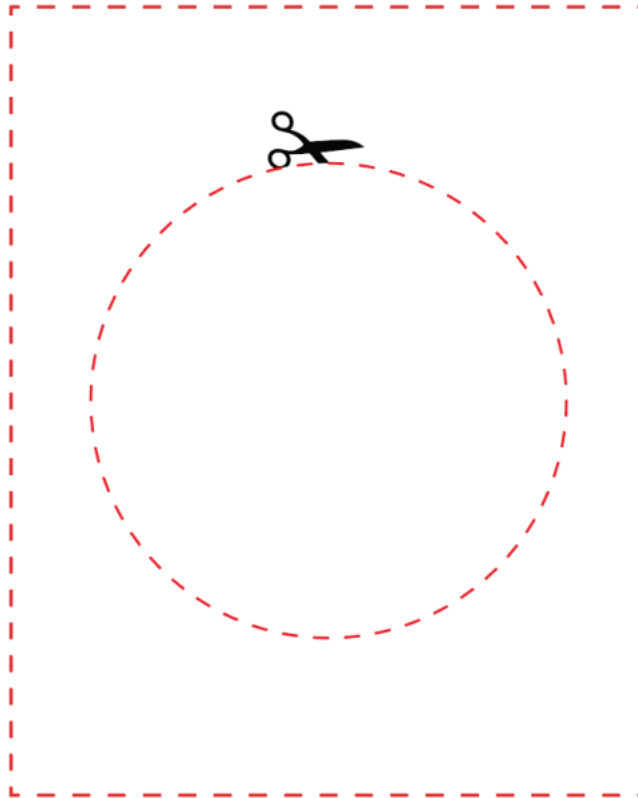
Please contact your local dealer for warranty information.

Trademark Acknowledgement

Cobra®, Nothing Comes Close to a Cobra®, and the snake design are registered trademarks of Cobra Electronics Corporation, USA.

Cobra Electronics Corporation™ is a trademark of Cobra Electronics Corporation, USA.


Mounting Template



This template should measure 3.35". Please ensure that this measurement is checked on your print-out for accuracy before making your cuts and installing.

©2020 Cobra Electronics Corporation

Documents / Resources

	<p>Cobra 6466269 On/Off Controller with Fast Charge USB [pdf] Owner's Manual 6466269, On Off Controller with Fast Charge USB</p>
---	--

References

- [Product Help/Manuals](#)