



Coavas HO1154137 Brown Computer Desk with Drawer Instruction Manual

[Home](#) » [Coavas](#) » Coavas HO1154137 Brown Computer Desk with Drawer Instruction Manual 

Contents

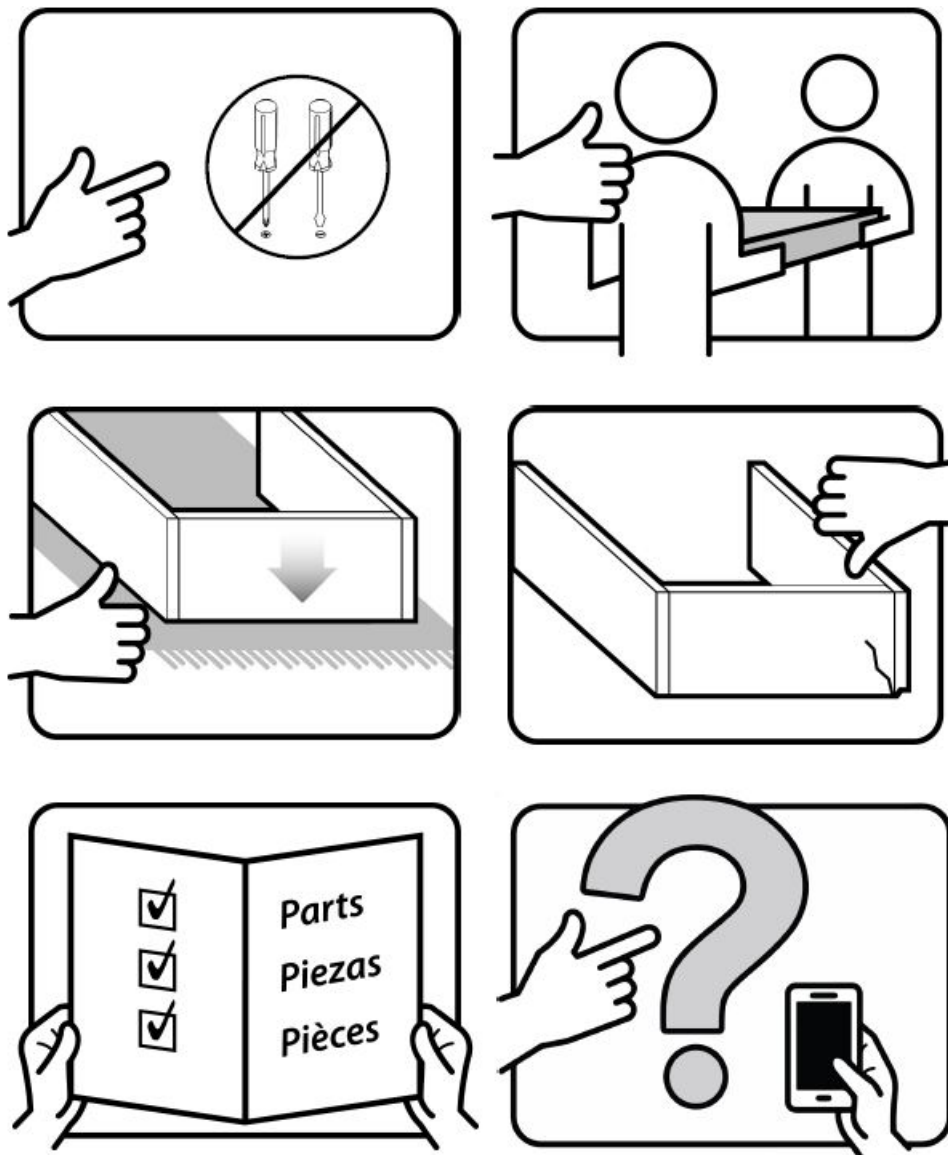
- [1 Coavas HO1154137 Brown Computer Desk with Drawer](#)
- [2 ASSEMBLY](#)
- [3 Replacement Parts or Damages](#)
- [4 One Year Limited Warranty](#)
- [5 Documents / Resources](#)
- [6 Related Posts](#)

Coavas

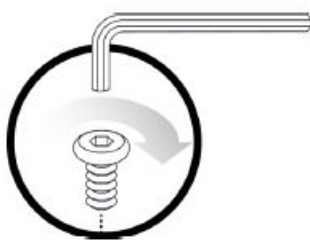
Coavas HO1154137 Brown Computer Desk with Drawer



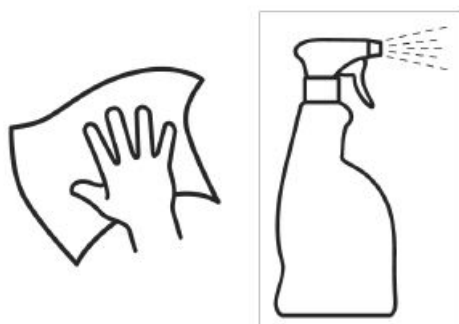
ASSEMBLY



Techniques

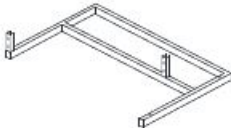
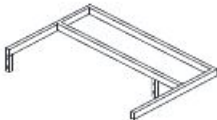


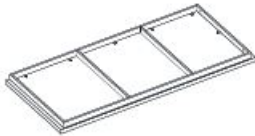

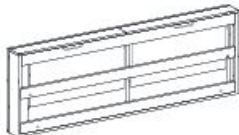






Care



Safety

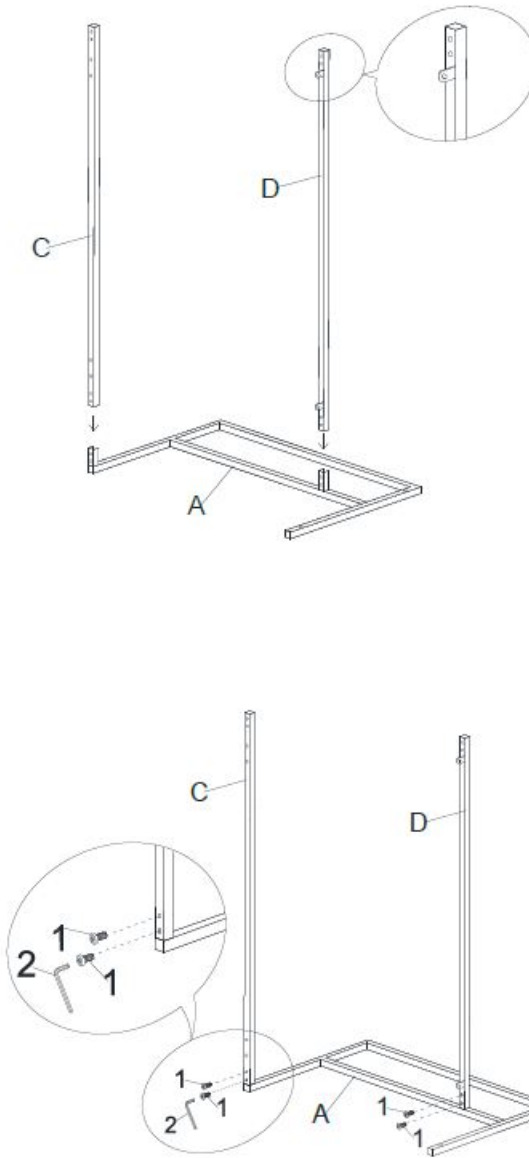
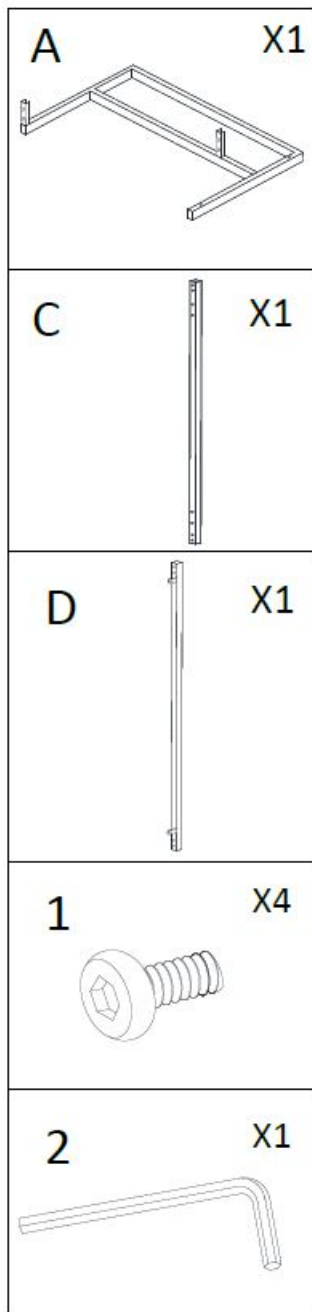


<div>A</div> <div></div> <div>Left frame Marco izquierdo Cadre gauche</div> <div>x1</div>	<div>B</div> <div></div> <div>Right frame Marco derecho Cadre droit</div> <div>x1</div>	<div>C</div> <div></div> <div>Bottom rail Riel inferior Rail inférieur</div> <div>x1</div>
<div>D</div> <div></div> <div>Middle rail Rail inférieur Rail intermédiaire</div> <div>x1</div>	<div>E</div> <div></div> <div>Top frame Marco superior Cadre supérieur</div> <div>x1</div>	<div>F</div> <div></div> <div>Vertical bar Barra vertical Barre verticale</div> <div>x2</div>
<div>G</div> <div></div> <div>Middle box Caja del medio Boîte du milieu</div> <div>x1</div>		

<div>1</div> <div></div> <div>Bolt Tornillo Boulon</div> <div>ø1/4"X3/8"L</div> <div>x20</div>	<div>2</div> <div></div> <div>Allen wrench Llave Allen Clé Allen</div> <div>ø1/4"</div> <div>x1</div>
<div>3</div> <div></div> <div>Bolt Tornillo Boulon</div> <div>ø1/4"X1-1/4"L</div> <div>x4</div>	<div>4</div> <div></div> <div>Adjustable level Nivel ajustable Niveau réglable</div> <div>x4</div>

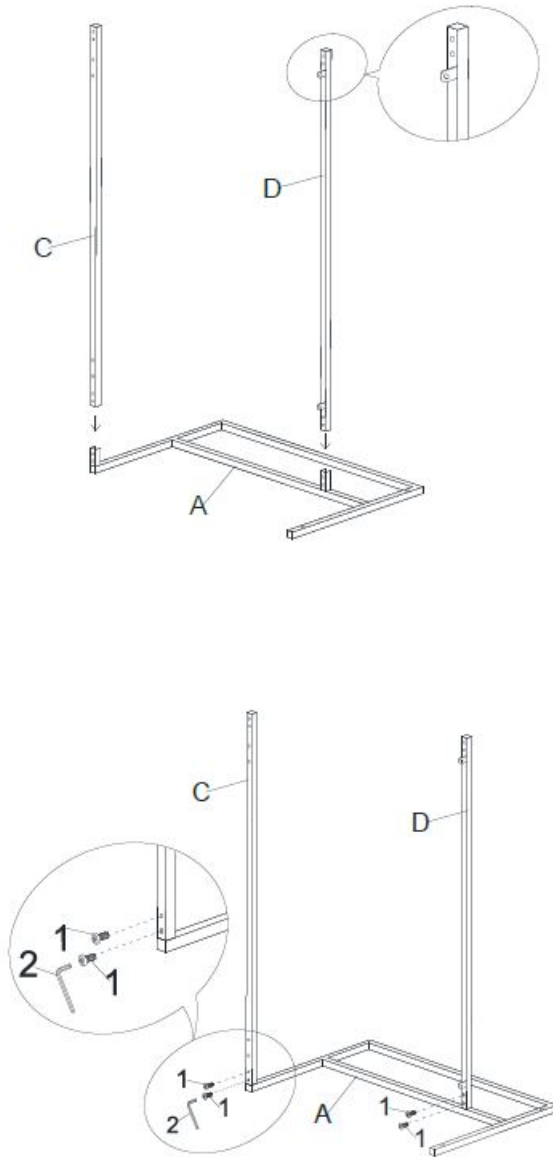
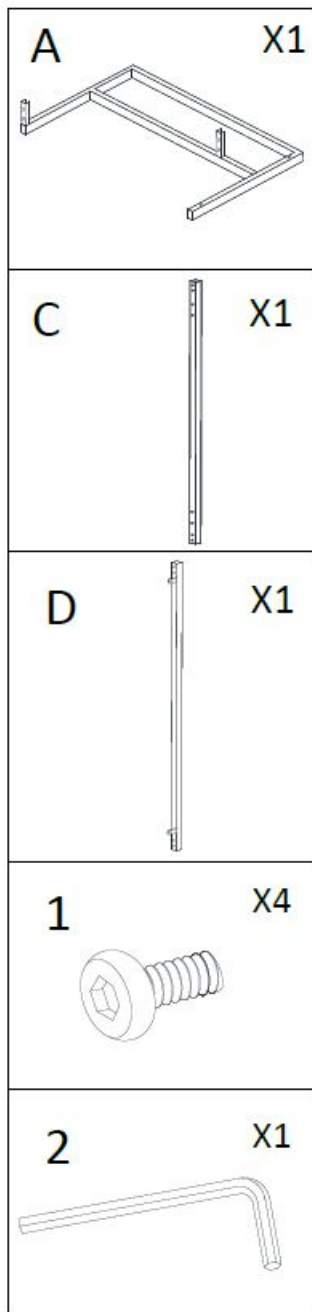
Step 1:

Connect bottom rail (C) and middle rail (D) to left frame (A) with bolt (1), then tighten with allen wrench (2). Do not fully tighten screws until all screws are in a position



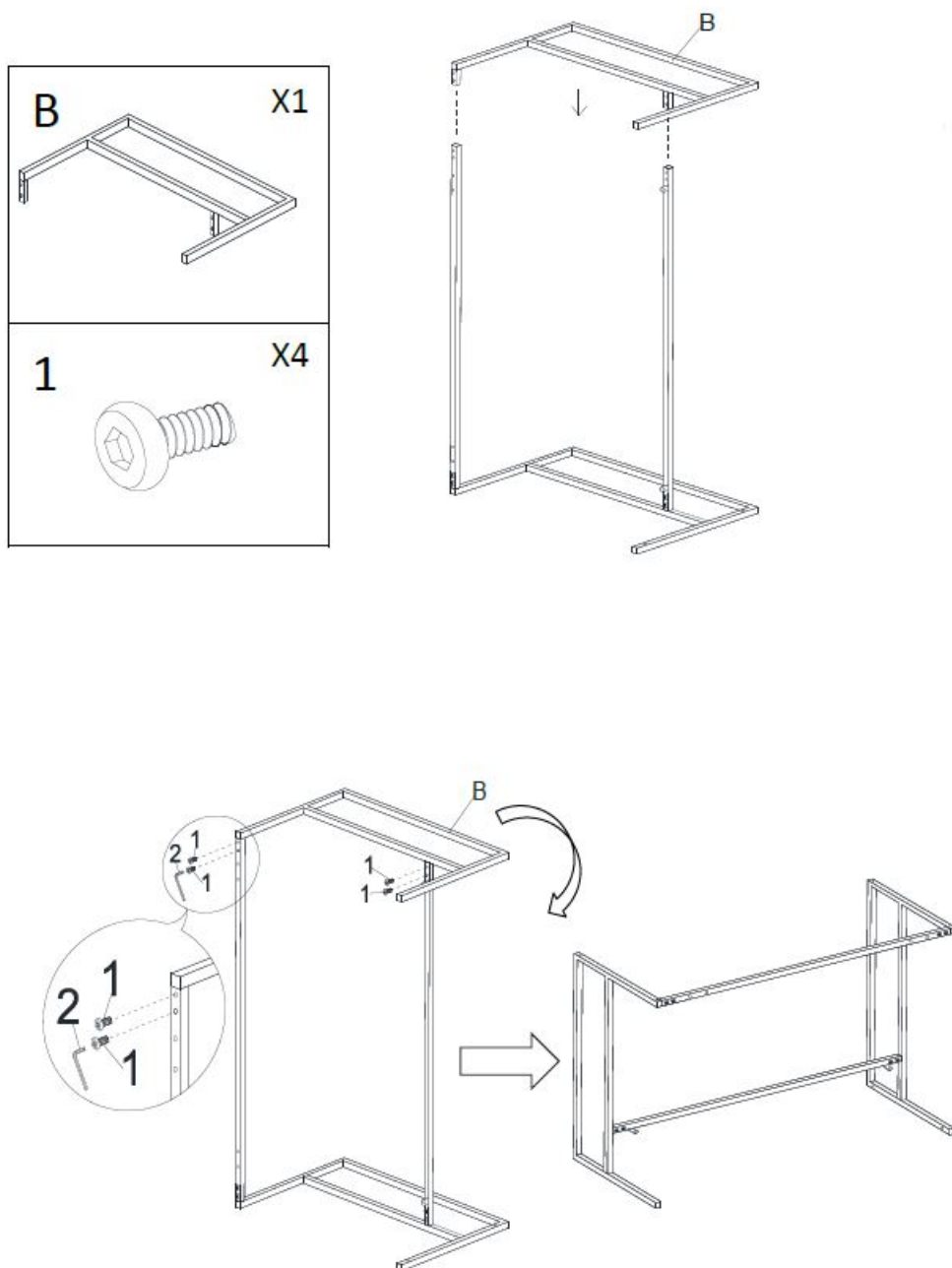
Step 2:

Connect right frame (B) to the unit assembled in Step 1 with bolt (1) and tighten with Allen wrench (2).



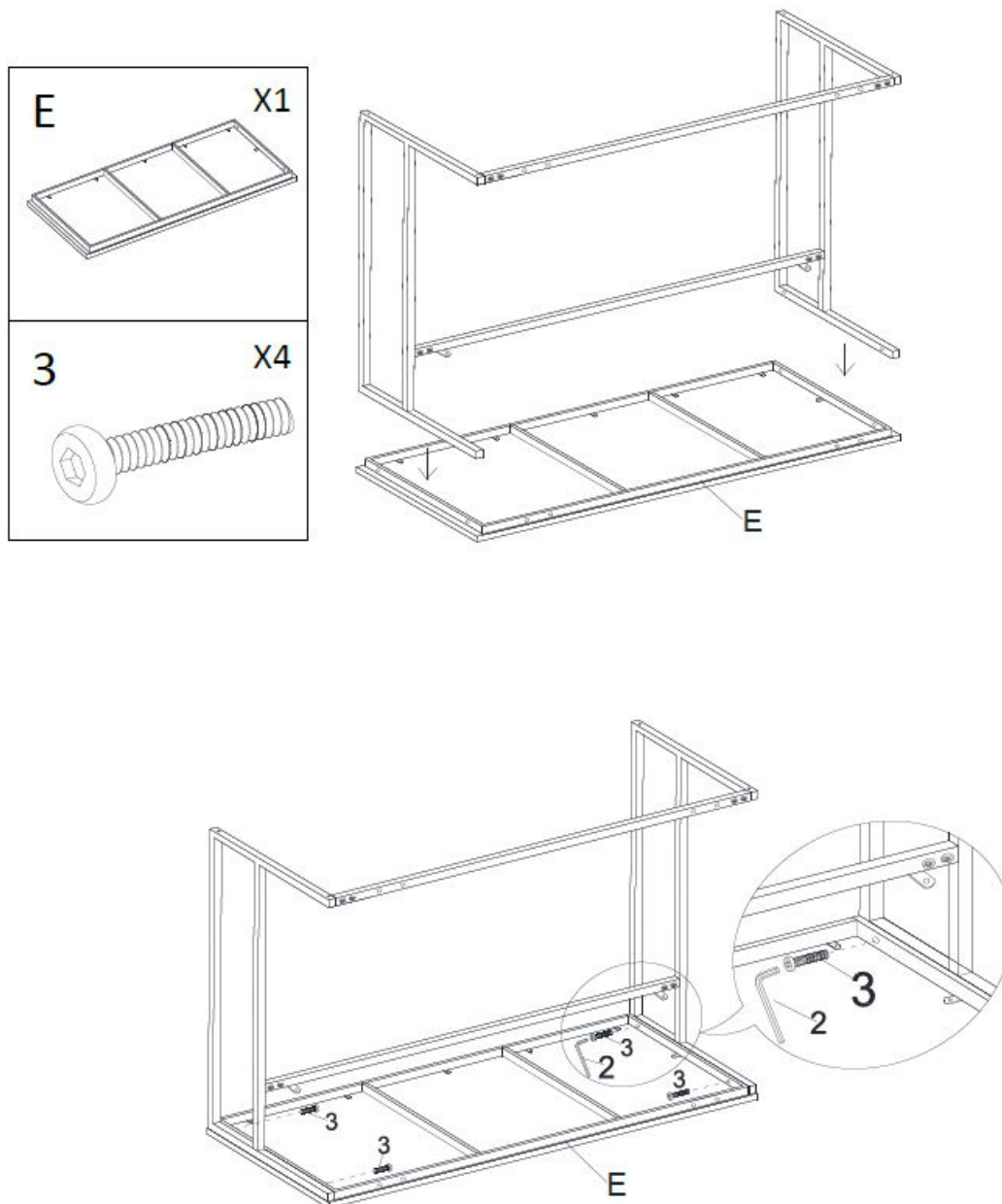
Step 3:

Connect the unit assembled in Step 2 to top frame (E) with bolt (3). Tighten with Allen wrench (2).



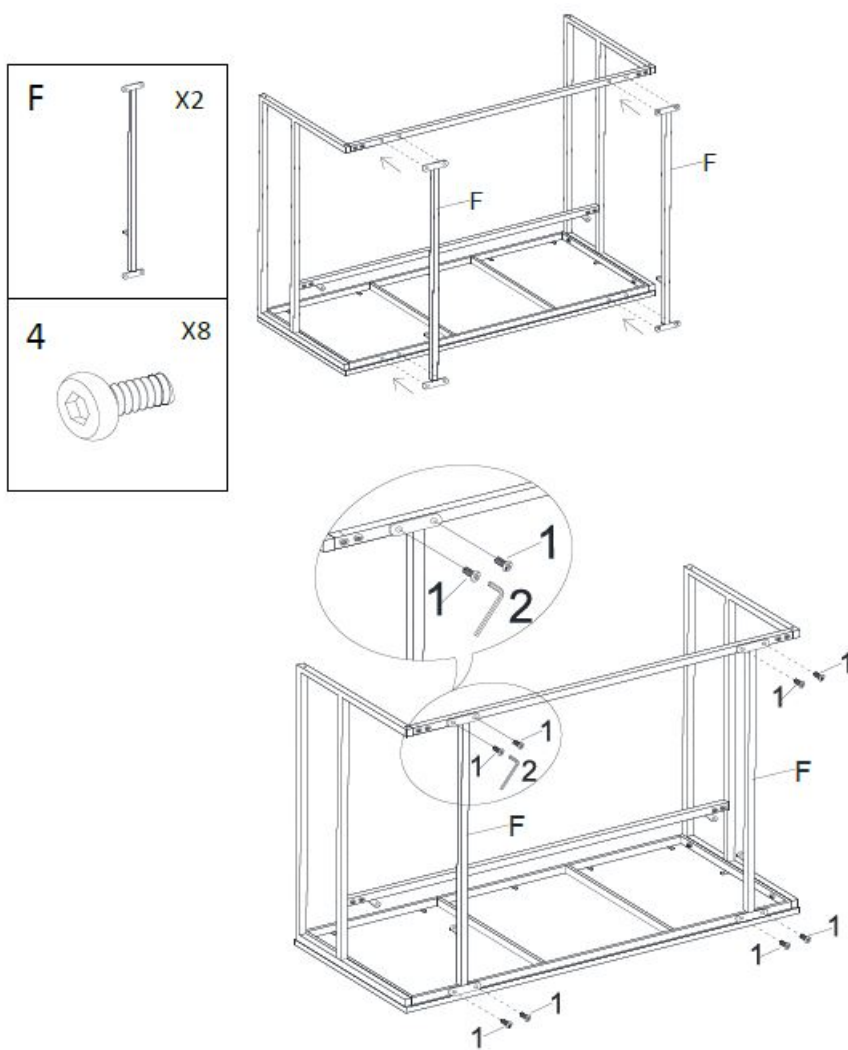
Step 4:

Attach the two vertical bars (F) to the unit assembled in Step 3 with bolt (1). Tighten with Allen wrench (2).



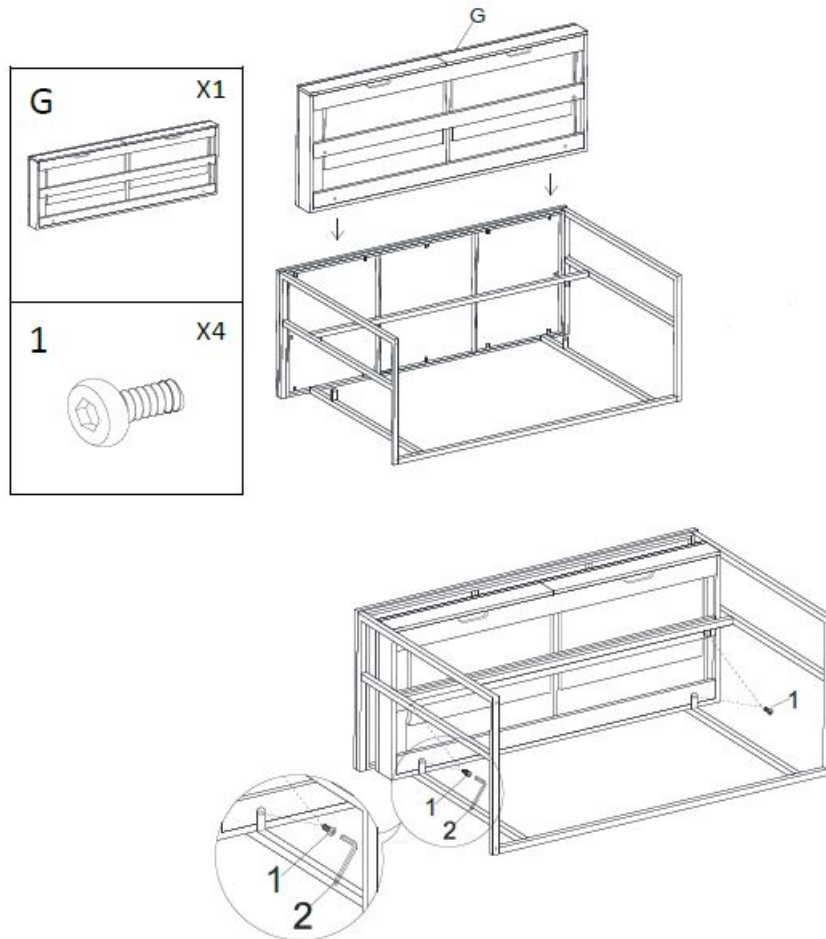
Step 5:

Attach the middle box (G) to the unit assembled in Step 4 with bolt (1). Tighten with Allen wrench (2).



Step 6:

Attach adjustable level (4) to the unit assembled in Step 5, then tighten all bolts. Place finished unit upright.



Adjust the levels as needed until the item is even.

Replacement Parts or Damages

You should examine your merchandise promptly upon receipt. For product concerns, please contact SEI Furniture customer service at 800-633-5096 Mon-Fri 8:30 am – 5 pm CST. Please have your purchase information ready when you call. Requests for missing or damaged parts must be requested within one year of purchase. Damages or missing parts reported outside of one year will not be honored. SEI Furniture is under no obligation to provide parts or replacement merchandise. Replacement part requests will not be honored for fully assembled or modified items. For merchandise purchased from an online retailer, please contact their customer service for parts or returns. Merchandise purchased as “like new,” “open box,” or “as is,” or from private parties are exempt from replacement parts.

One Year Limited Warranty

Product warranty applies to the original purchaser with items in original factory-sealed cartons. Proof of purchase date, price, and seller must be shown to validate the warranty. This warranty covers defects in manufacturing. It does not apply to any defects caused by negligence, misuse, accidental damage, or improper assembly. Glass and mirrors are excluded from this warranty. Warranty does not extend to cosmetic damage, accidents, misuse, abuse, or neglect. Liability for incidental or consequential damages is excluded to the maximum extent permitted by law. After verification of claim, SEI Furniture will repair or replace any defective product or missing part. If the defective item must be returned in whole or in part, we will send written authorization and a pre-addressed shipping label for the return of any defective product or part. No returns will be accepted without prior approval.

Documents / Resources

Product number Número de producto Numara de produs
XXXXXXX

Thank you for your purchase! *Leaves not to compare! Words power with action!*

HO1154137, Brown Computer Desk with Drawer, HO1154137 Brown Computer Desk with Drawer, Computer Desk with Drawer, Desk with Drawer

HO1154137, Brown Computer Desk with Drawer, HO1154137 Brown Computer Desk with Drawer, Computer Desk with Drawer, Desk with Drawer