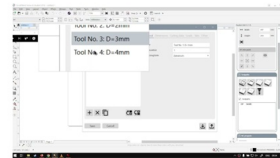


CNCU
CNCU CoreDraw
Plugin For
Router



CNCU CoreDraw Plugin For Router User Guide

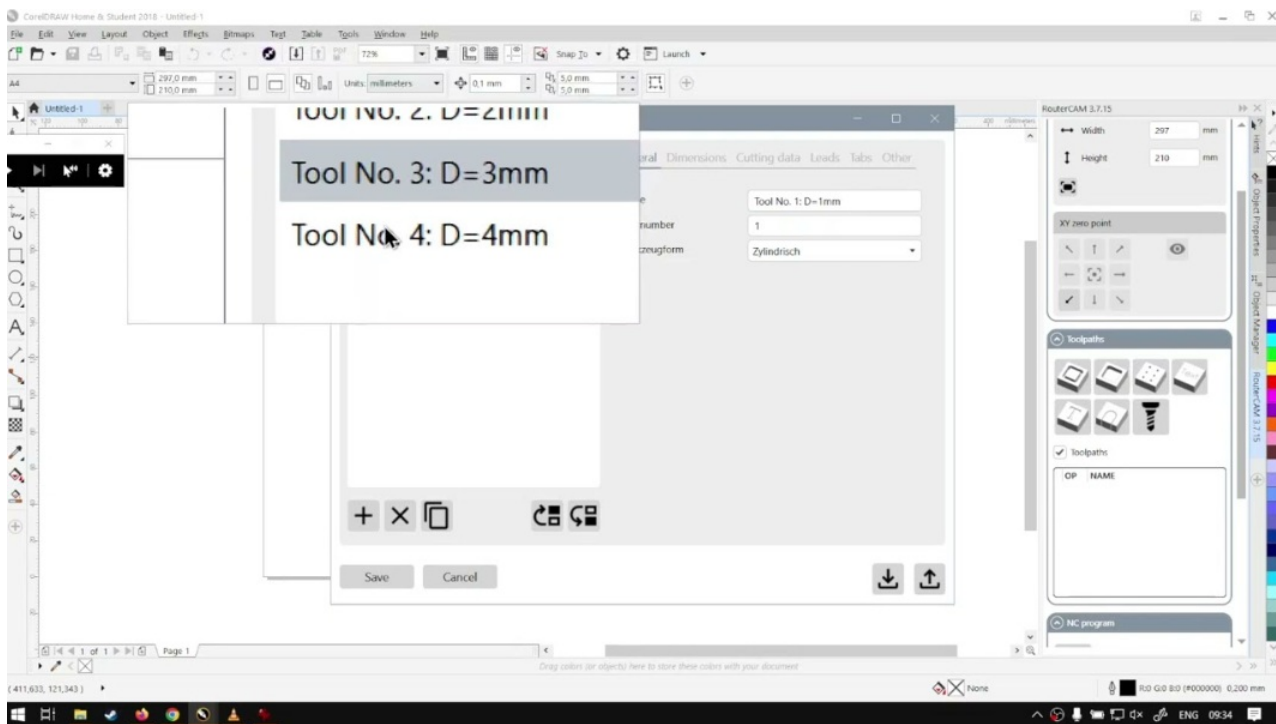
[Home](#) » [CNCU](#) » CNCU CoreDraw Plugin For Router User Guide 

Contents

- [1 CNCU CoreDraw Plugin For Router](#)
- [2 Product Information](#)
- [3 Product Usage Instructions](#)
- [4 CoreDraw plug-in installation](#)
- [5 How to use](#)
- [6 Documents / Resources](#)
 - [6.1 References](#)
- [7 Related Posts](#)

CNCU

CNCU CoreDraw Plugin For Router



Product Information

Specifications

- Product Name: CoreDraw Plug-in
- Compatible with: CorelDRAW Graphics Suite X6
- Manufacturer: AM.CO.ZA

Product Usage Instructions

Installation

1. Copy the folder **AM.CO.ZA_CDR** to **C:** (Do not rename this folder).
2. Copy the file **AM.CO.ZA_USB.gms** to the Core Draw installation folder: **C:\Program Files (x86)\Corel\CorelDRAW Graphics Suite X6\DrawGMS**.
3. Open CorelDRAW and navigate to **Tools > Customization....**
4. Click on **Commands > Macros > AM_CO_AM**.
5. In the displayed dialog box, click on **Appearance > Import > Files**.
6. In the windows that appear, double click on **am.co.za.ico**.
7. Press the left mouse button and drag **cutterpro.cutterpor** to the toolbar.
8. Click OK to complete the installation.

How to Use

1. Output the designed file from CorelDRAW.
2. Click on **Plotter Origin** and select **Bottom left**.
3. Select **Plotter units:** and choose **1016**.
4. Click OK.

5. Select the port connected to the plotter and start the cutting process.

Frequently Asked Questions (FAQ)

- **Q: What should I do if the plug-in does not appear in CorelDRAW after installation?**

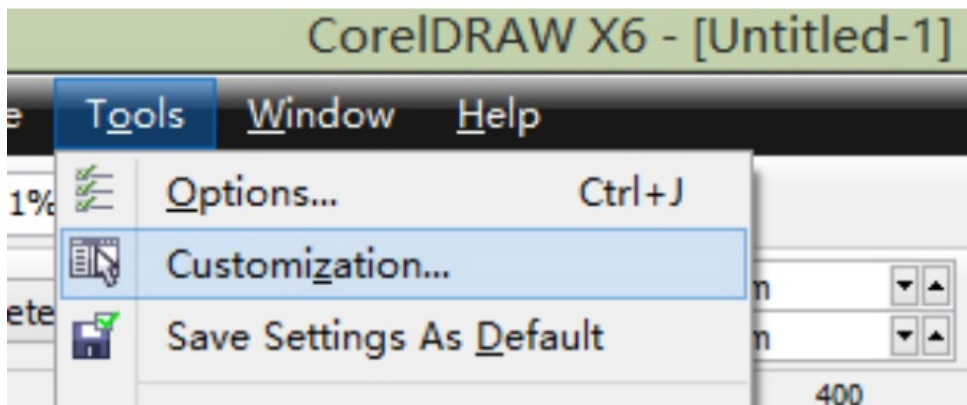
A: Make sure you have followed the installation instructions carefully. Try restarting CorelDRAW or your computer after installation.

- **Q: Can I use this plug-in with other versions of CorelDRAW?**

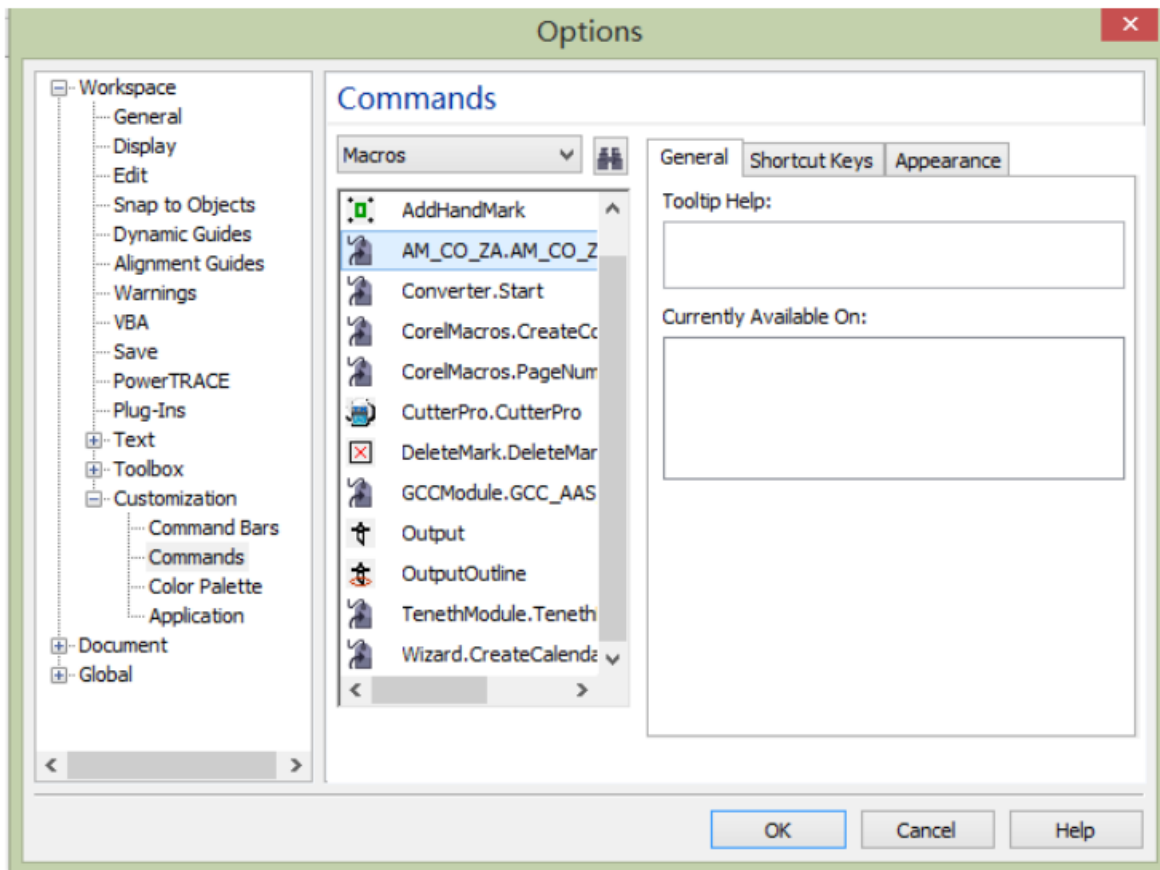
A: This plug-in is specifically designed for CorelDRAW Graphics Suite X6. Compatibility with other versions may vary.

CoreDraw plug-in installation

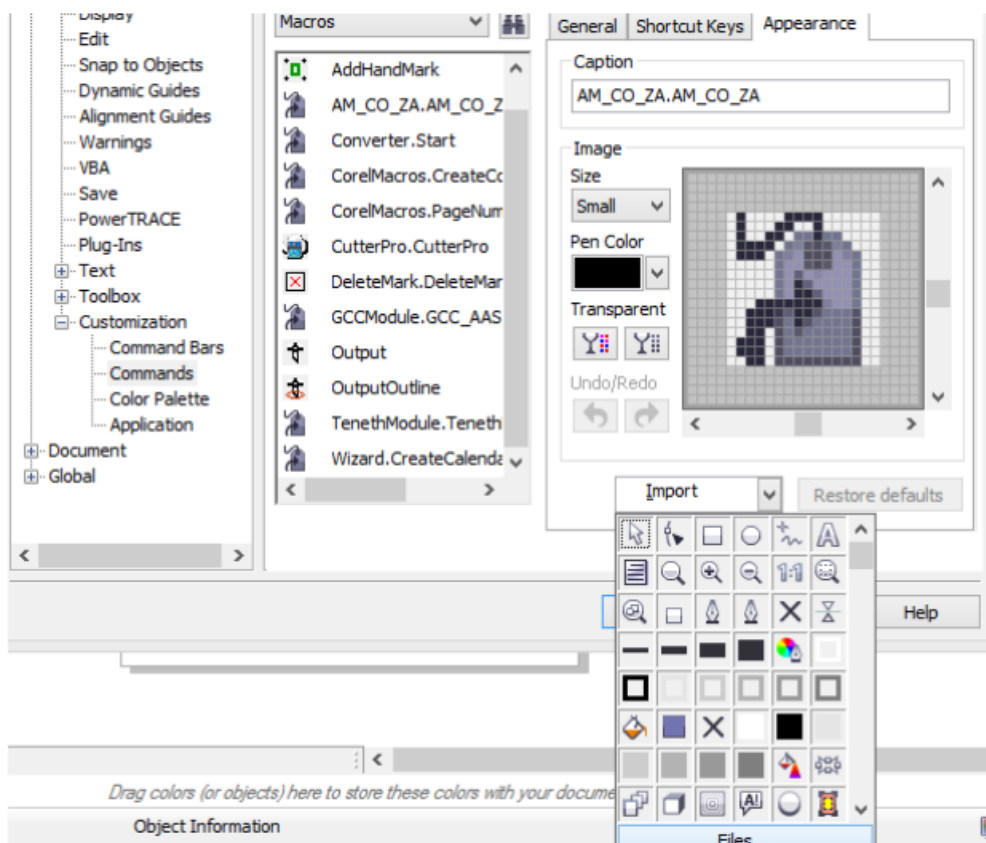
1. copy folder "AM.CO.ZA_CDR" to c:\ (important : not rename this folder)
2. copy file "AM.CO.ZA_USB.gms" to CoreDraw install folder "C:\Program Files (x86)\Corel\CorelDRAW Graphics Suite X6\Draw\GMS"
3. Open CorelDRAW then click' Tools' "Customization..." ->



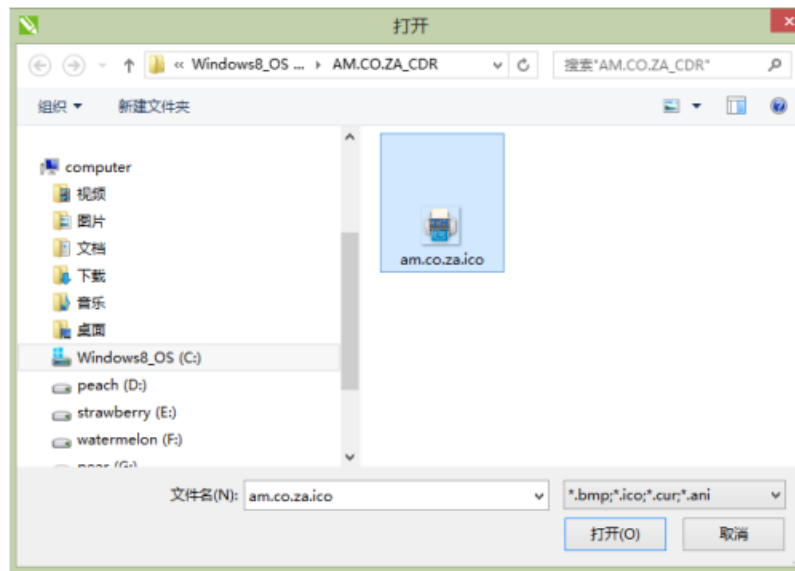
Then click "Commands"-> "Macros" -> "AM_CO_AM. AM_CO_AM" as follows



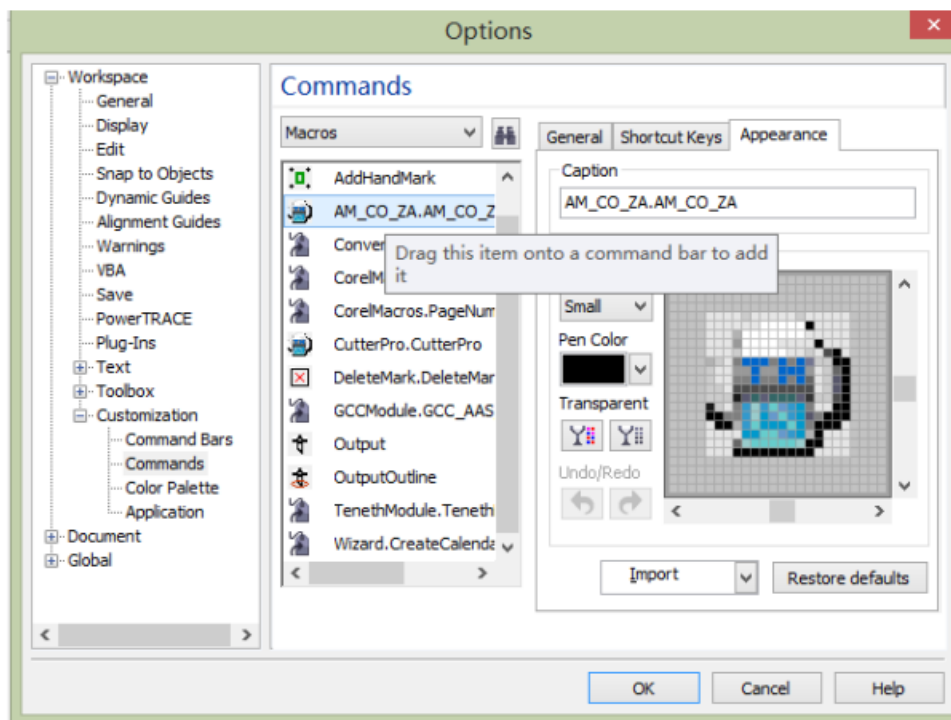
it will display the following dialog box, click "Appearance">"Import">"Files"



it will display the following windows, then double click "am.co.za.ico"

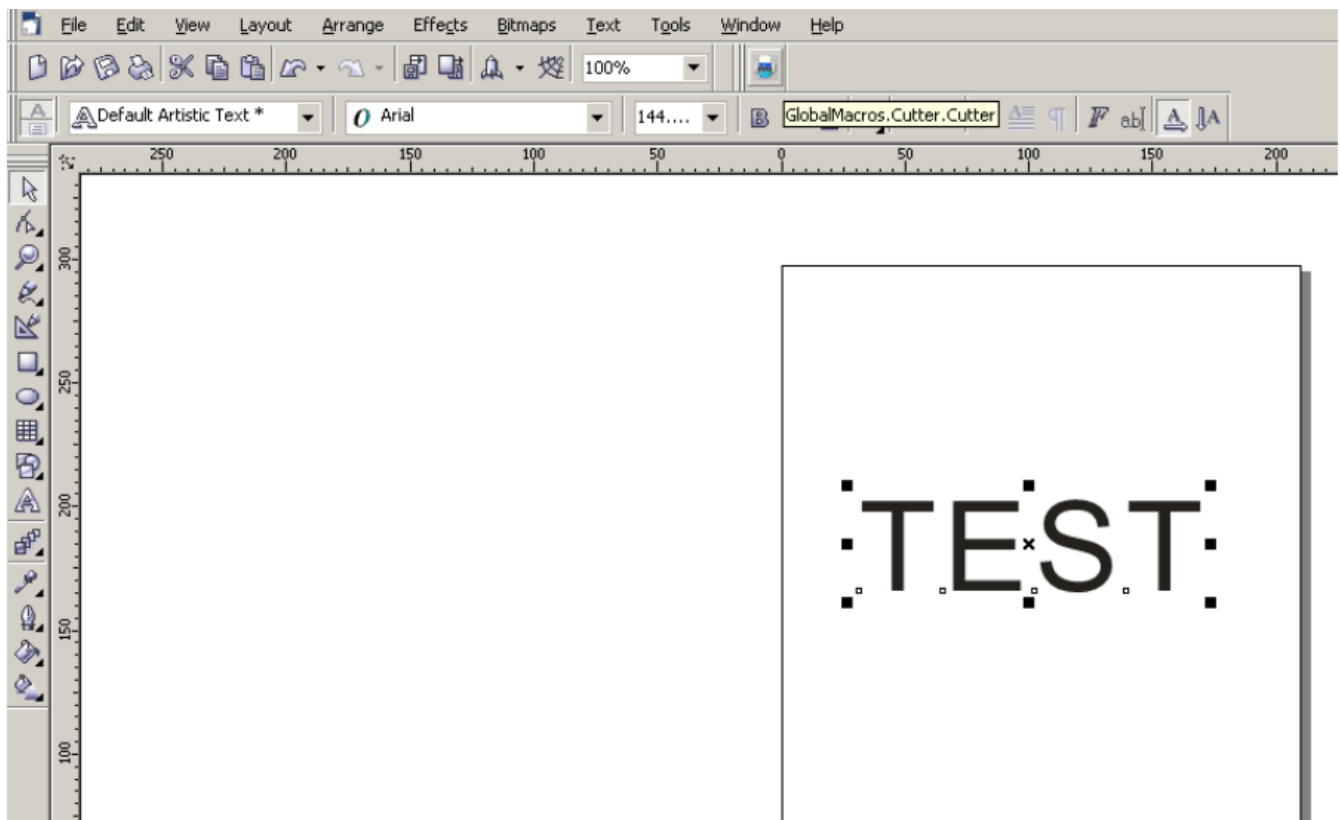


Press the left mouse button and drag "cutterpro.cutterpor" to the toolbar Click "OK"

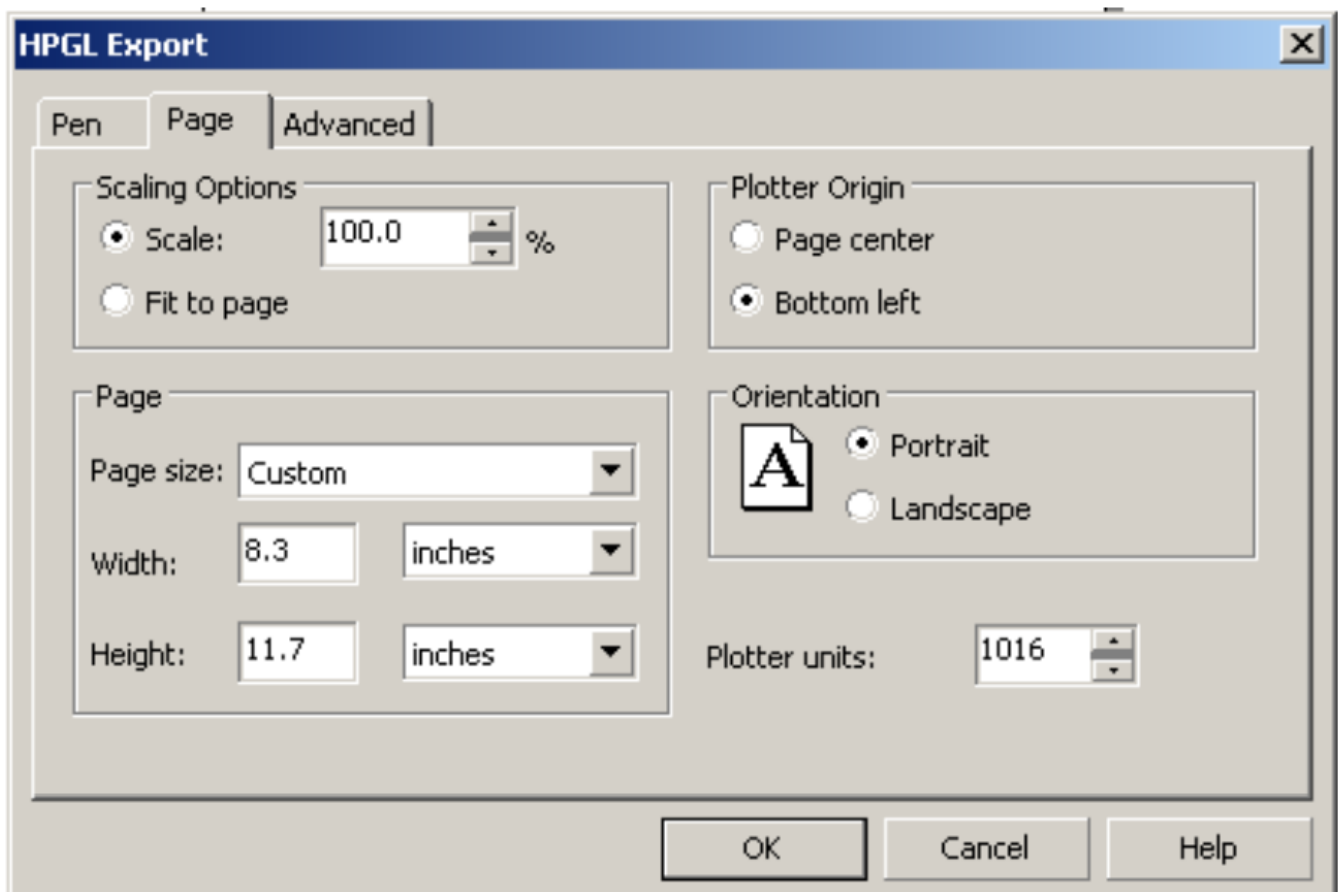


How to use

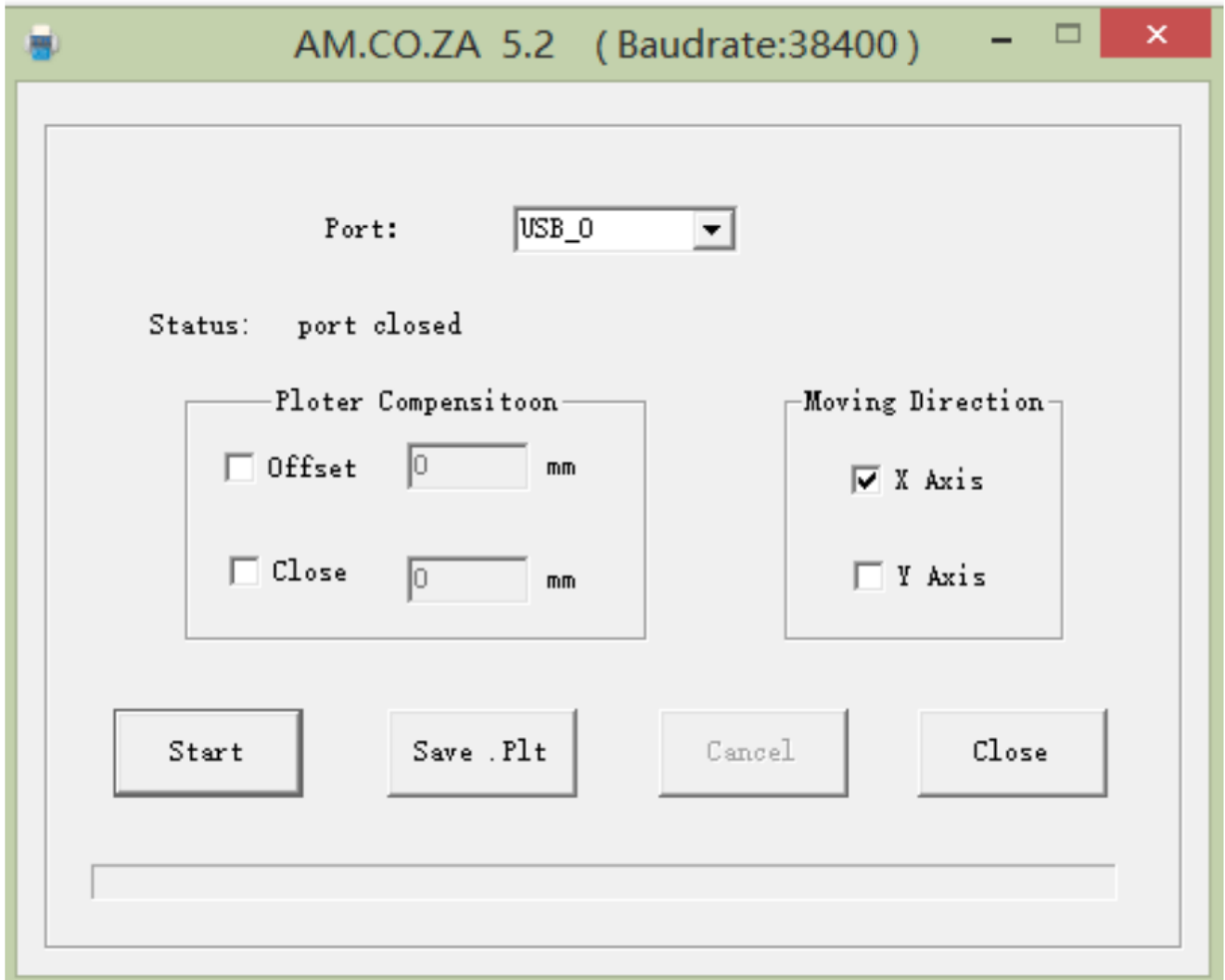
Output the Designed file then click  "Plotter Origin" select "Bottom left"



"Plotter units:" select "1016"




Click "OK"



Select the port connected to the plotter and start.

Documents / Resources

	<p>CNCU CoreDraw Plugin For Router [pdf] User Guide CoreDraw Plugin For Router, Plugin For Router, Router</p>
---	---

References

- [AM.CO.ZA® Achievement Matters, CNC Machinery, Spare-Parts, Consumables & Materials 2024 - AM.CO.ZA® Achievement Matters, CNC Machinery, Spare-Parts, Consumables & Materials](#)
- [User Manual](#)

[Manuals+](#), [Privacy Policy](#)

This website is an independent publication and is neither affiliated with nor endorsed by any of the trademark owners. The "Bluetooth®" word mark and logos are registered trademarks owned by Bluetooth SIG, Inc. The "Wi-Fi®" word mark and logos are registered trademarks owned by the Wi-Fi Alliance. Any use of these marks on this website does not imply any affiliation with or endorsement.