



CNC4PC SHIELD C78 Connection Board User Manual

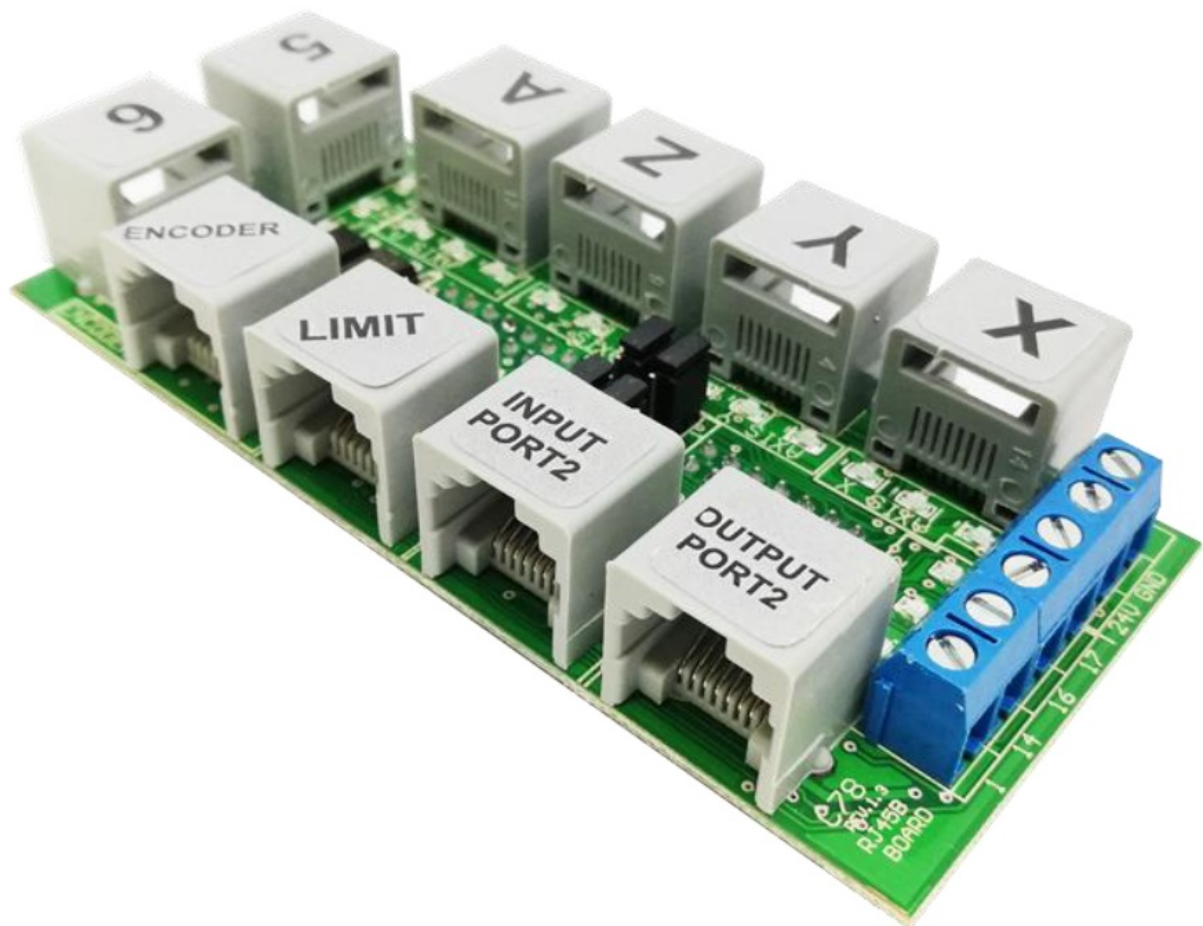
[Home](#) » [CNC4PC](#) » CNC4PC SHIELD C78 Connection Board User Manual 

Contents

- [1 CNC4PC SHIELD C78 Connection Board](#)
- [2 OVERVIEW](#)
- [3 FEATURES](#)
- [4 BOARD DESCRIPTION](#)
- [5 LEDS](#)
- [6 TERMINALS](#)
- [7 SELECT OUTPUT PORT_2](#)
- [8 PINOUT](#)
- [9 DIMENSIONS](#)
- [10 Documents / Resources](#)
- [11 Related Posts](#)



CNC4PC SHIELD C78 Connection Board



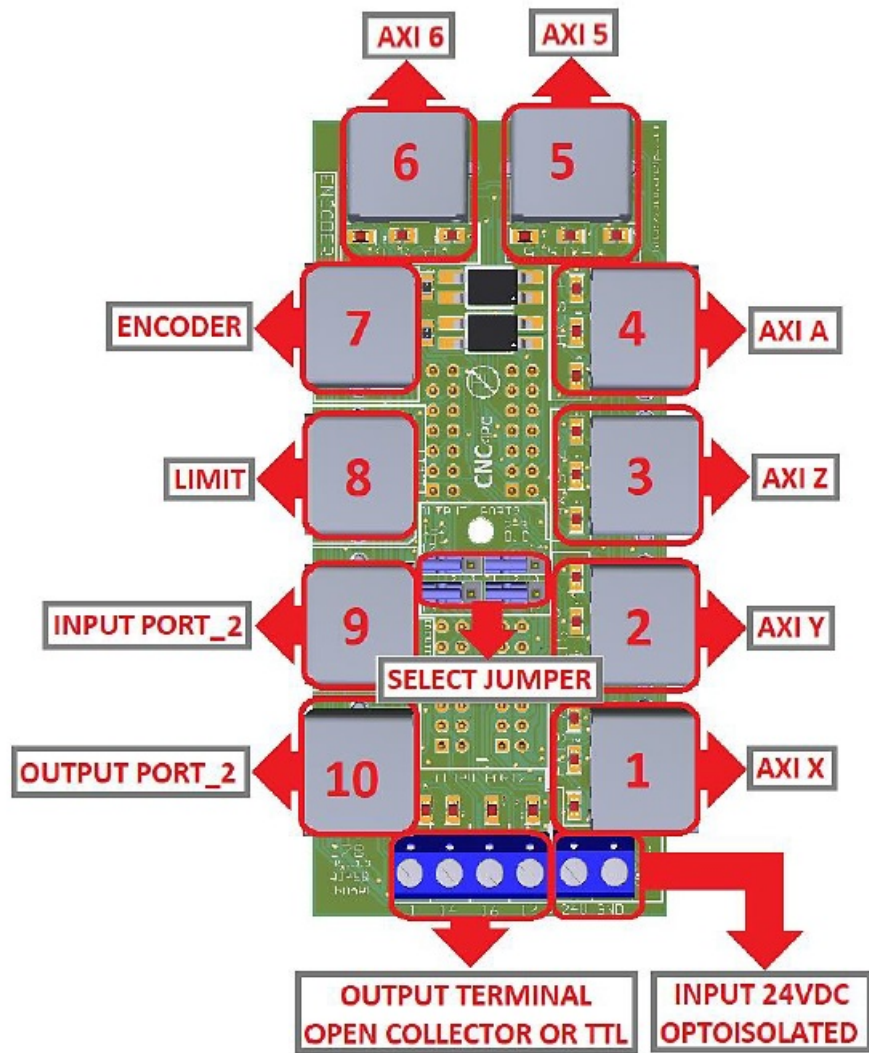
OVERVIEW

- This shield board is used for connections C76, M16D and C82.
- It has an encoder, limits, port_1 input, signal TTL or Open Collector port_2 output and connection for axes.

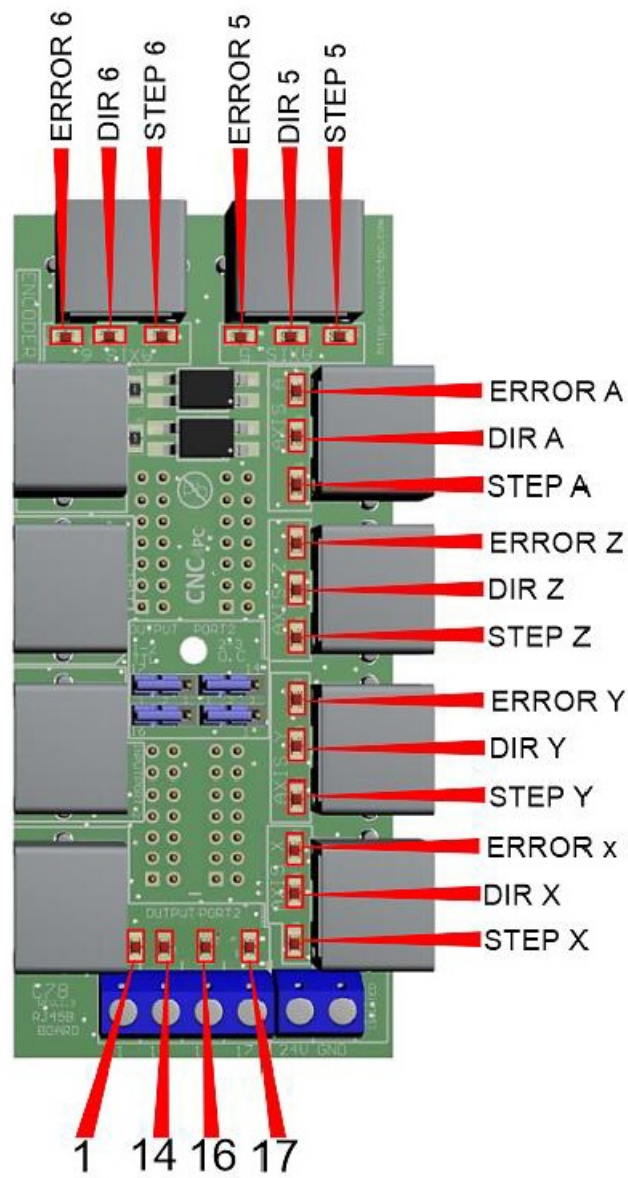
FEATURES

- RJ45 connector for Axes.
- RJ45 connector for encoder.
- RJ45 connector for limit.
- RJ45 connector for input port_2.
- Select jumper.
- Input terminal optoisolated.

BOARD DESCRIPTION

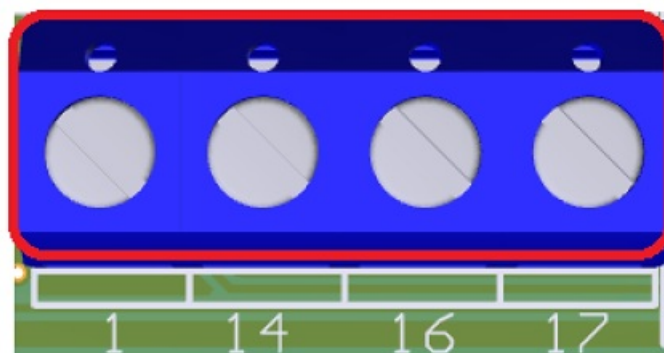


LEDS



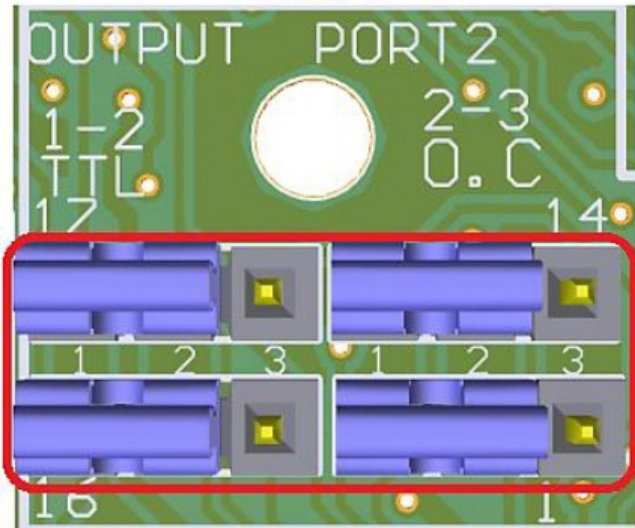
TERMINALS

- Outputs terminal TTL or Open Collector.

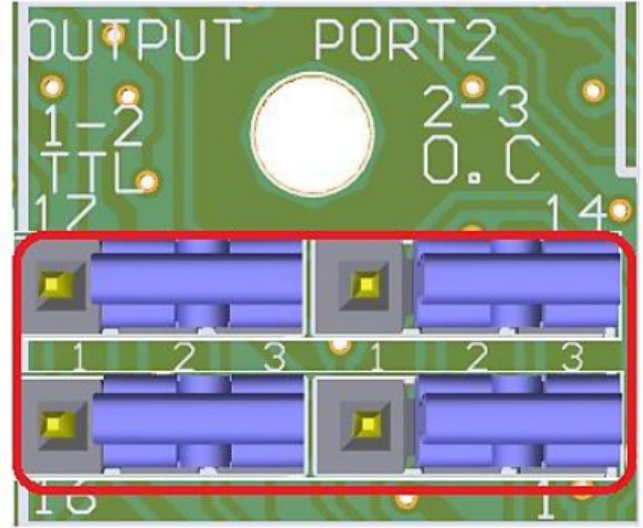


- Wiring for Open Collector

1-2: TTL



2-3: OPEN COLLECTOR



PINOUT



ENCODER

LIMIT

INPUT PORT_2

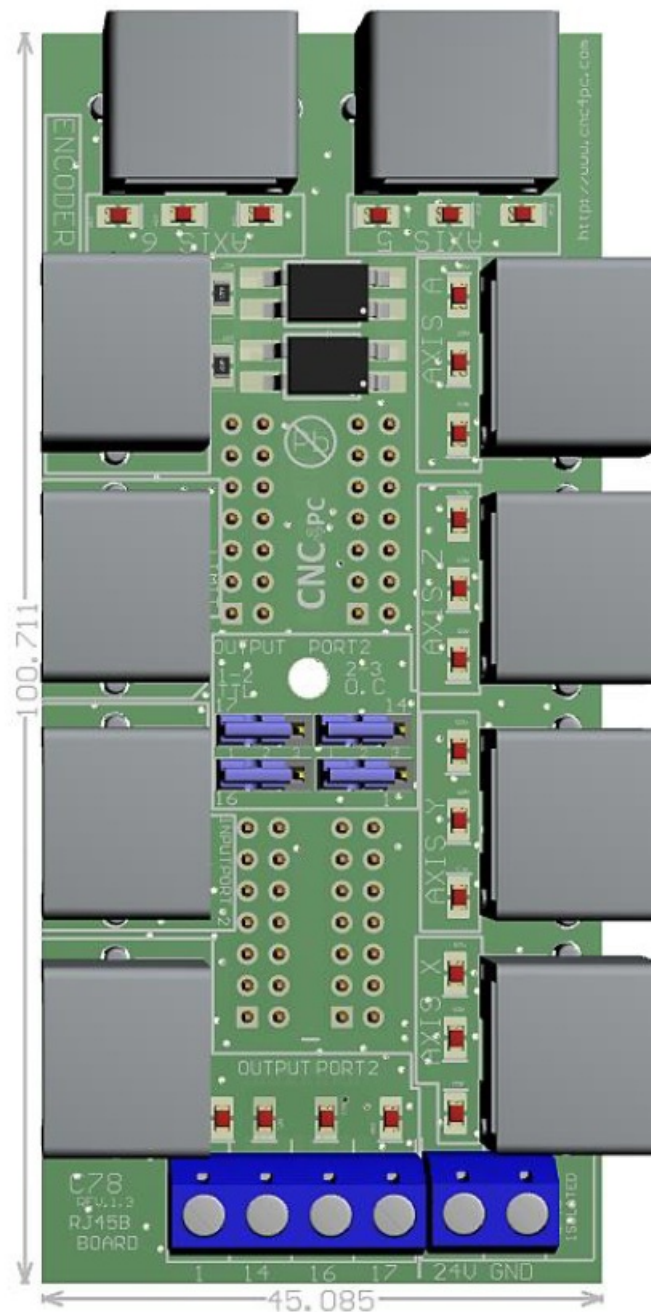
OUTPUT PORT_2

RJ45_7		RJ45_8		RJ45_9		RJ45_10	
RJ45 PIN	P.P. PIN	RJ45 PIN	P.P. PIN	RJ45 PIN	P.P. PIN	RJ45 PIN	P.P. PIN
1	GND	1	GND	1	GND	1	GND
2	5VDC	2	1_13	2	NC	2	2_17
3	NC	3	1_12	3	NC	3	2_16
4	2_4(INDEX)	4	1_11	4	2_11	4	2_1
5	NC	5	1_15	5	1_15	5	2_14
6	2_2(enc. A)	6	2_11	6	NC	6	NC
7	NC	7	12/24VDC	7	12/24VDC	7	5VDC
8	2_3(enc. B)	8	NC	8	NC	8	12/24VDC



AXI X		AXI Y		AXI Z		AXI A		AXI 5		AXI 6	
RJ45_1		RJ45_2		RJ45_3		RJ45_4		RJ45_5		RJ45_6	
RJ45 PIN	P.P. PIN	RJ45 PIN	P.P. PIN	RJ45 PIN	P.P. PIN	RJ45 PIN	P.P. PIN	RJ45 PIN	P.P. PIN	RJ45 PIN	P.P. PIN
1	NC	1	NC	1	NC	1	NC	1	NC	1	NC
2	1_2(Step X)	2	1_4(Step Y)	2	1_6(Step Z)	2	1_8(Step A)	2	1_1(Step 5)	2	1_14(Step 6)
3	NC	3	NC	3	NC	3	NC	3	NC	3	NC
4	GND	4	GND	4	GND	4	GND	4	GND	4	GND
5	Error/res X	5	Error/res Y	5	Error/res Z	5	Error/res A	5	Error/res 5	5	Error/res 6
6	1_3(Dir X)	6	1_5(Dir Y)	6	1_7(Dir Z)	6	1_9(Dir A)	6	1_17(Dir 5)	6	1_16(Dir 6)
7	12/24VDC	7	12/24VDC	7	12/24VDC	7	12/24VDC	7	12/24VDC	7	12/24VDC
8	5VDC	8	5VDC	8	5VDC	8	5VDC	8	5VDC	8	5VDC


DIMENSIONS



DISCLAIMER

Use caution. CNC machines can be dangerous machines. Neither DUNCAN USA, LLC nor Arturo Duncan are liable for any accidents resulting from the improper use of these devices. This product is not a fail-safe device and it should not be used in life support systems or in other devices where its failure or possible erratic operation could cause property damage, bodily injury or loss of life.

Documents / Resources

 The image shows the CNC4PC SHIELD C78 Board, a green printed circuit board (PCB) populated with various electronic components. It features a large integrated circuit (likely a microcontroller or FPGA) in the center, surrounded by smaller chips, capacitors, and resistors. The board has a multi-pin connector on one side. The text "CNC4PC" is visible in the top left corner, and "SHIELD C78 Rev. 1.2" is printed near the top center. The date "SEPTEMBER, 2022" is at the bottom.	<p>CNC4PC SHIELD C78 Connection Board [pdf] User Manual SHIELD C78 Connection Board, SHIELD C78, Connection Board, Board</p>
--	--

Manuals+.