



## CNC4PC C34SGDV Board User Manual

[Home](#) » [CNC4PC](#) » CNC4PC C34SGDV Board User Manual 

### CNC4PC C34SGDV Board



## Contents

### 1 OVERVIEW

### 2 FEATURES

### 3 BOARD DESCRIPTION

### 4 JUMPER TO SELECT THE ENABLE

### 5 WIRING SAMPLE

#### 5.1 Diagram of connection with input signals Step & Dir and C76

#### 5.2 Diagram of connection with input signals Differentials C74 and C76.

### 6 PINOUT

### 7 DIMENSION

### 8 DISCLAIMER

### 9 Documents / Resources

#### 9.1 References

### 10 Related Posts

## OVERVIEW

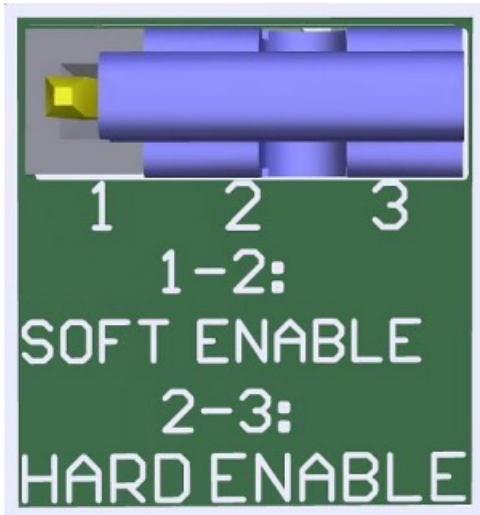
This board interface is used for the connection between [C82](#), [C76](#), [M16D](#), [C62 C86MASSO](#), [C86ACORN](#) and the YASKAWA SGD V DRIVER

## FEATURES

- DB50 connector for Driver Connection.
- RJ45 Connector for Axis.
- Encoder Output.
- Alarm terminal
- Select Jumper for Hard Enable or Soft Enable.
- Select jumper for signal differentials.
- Select Jumper active Low and active High
- Terminals for external drive enable push button.
- Power Terminal 24V

## BOARD DESCRIPTION

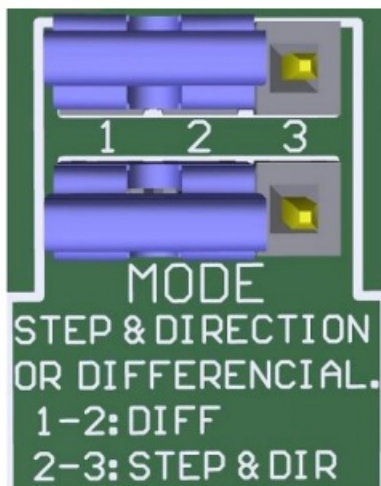




### JUMPER TO SELECT THE DIFFERENTIAL

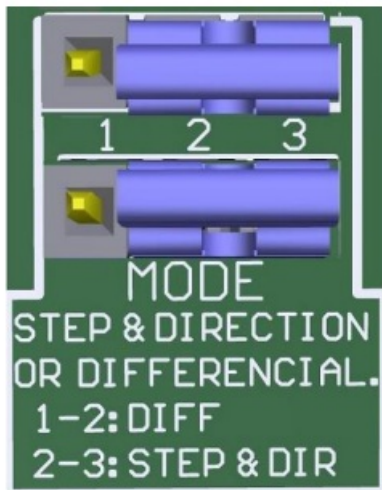
If working the inputs of STEP and DIR as differential signals, you have to use the board, set jumper as shown in the image.

### DIFFERENTIAL



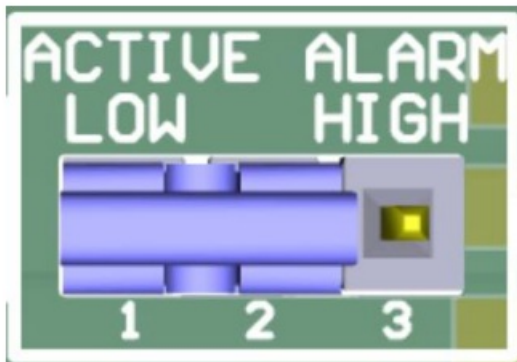
If not use the differential signal for STEP & DIR, set jumper as show in the image.

### STEP & DIR

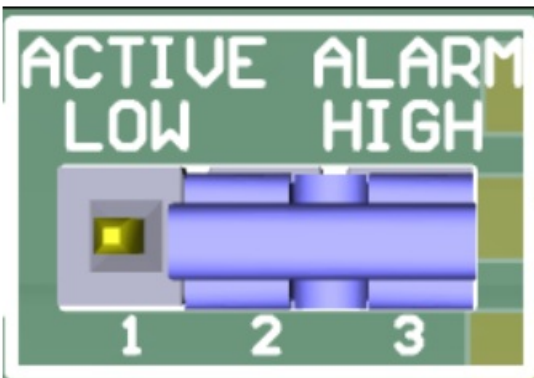


JUMPER TO SELECT ACTIVE LOW AND ACTIVE HIGH

**1-2: ACTIVE LOW**



**2-3: ACTIVE HIGH**



## WIRING SAMPLE

Diagram of connection with input signals Step & Dir and C76

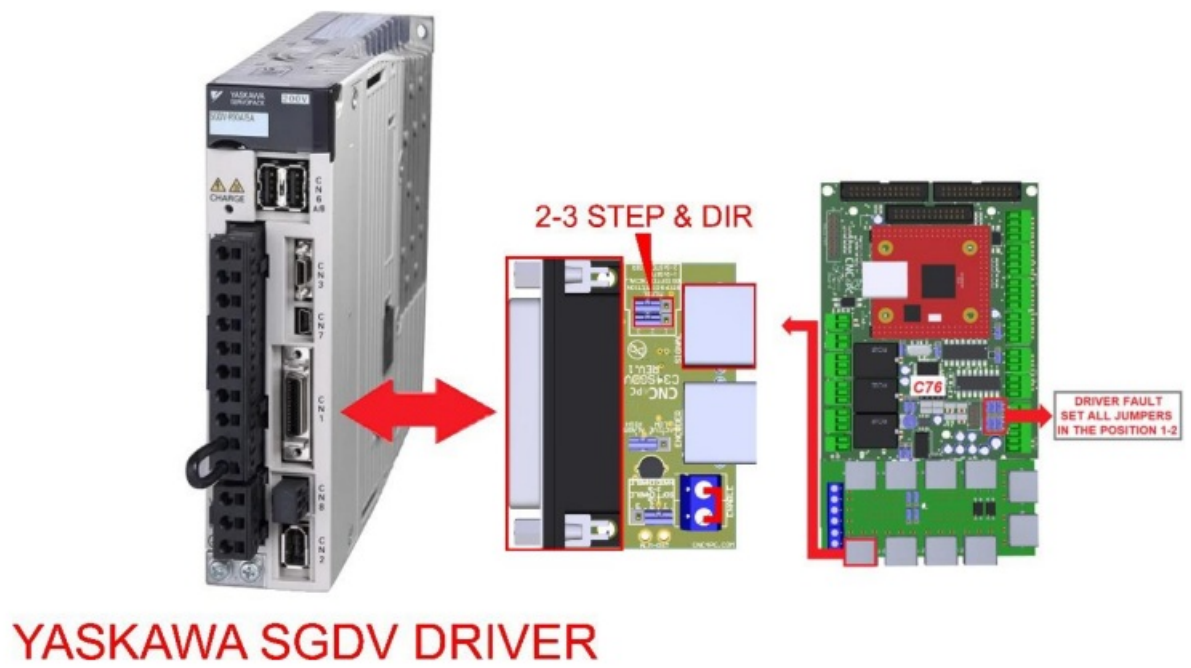
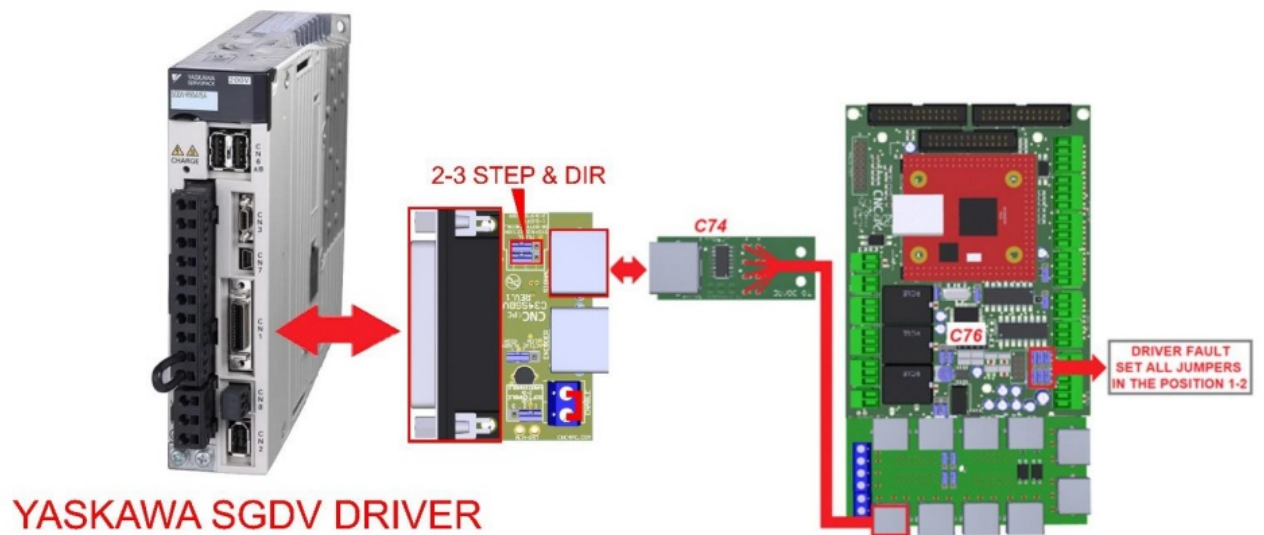


Diagram of connection with input signals Differentials C74 and C76.



PINOUT

F SERIES SERVO DRIVE AND C34SGDV CONNECTION		
DB50 PIN	FUNCTION	RJ45 PIN
40	SOFF EN	5
47	24V	7
–	+ 5V	8
32	COM- / GND	4
31	ALARM *	5
12	DIR-	3
11	DIR+	6
8	STEP-	1
7	STEP+	2

**Note:**

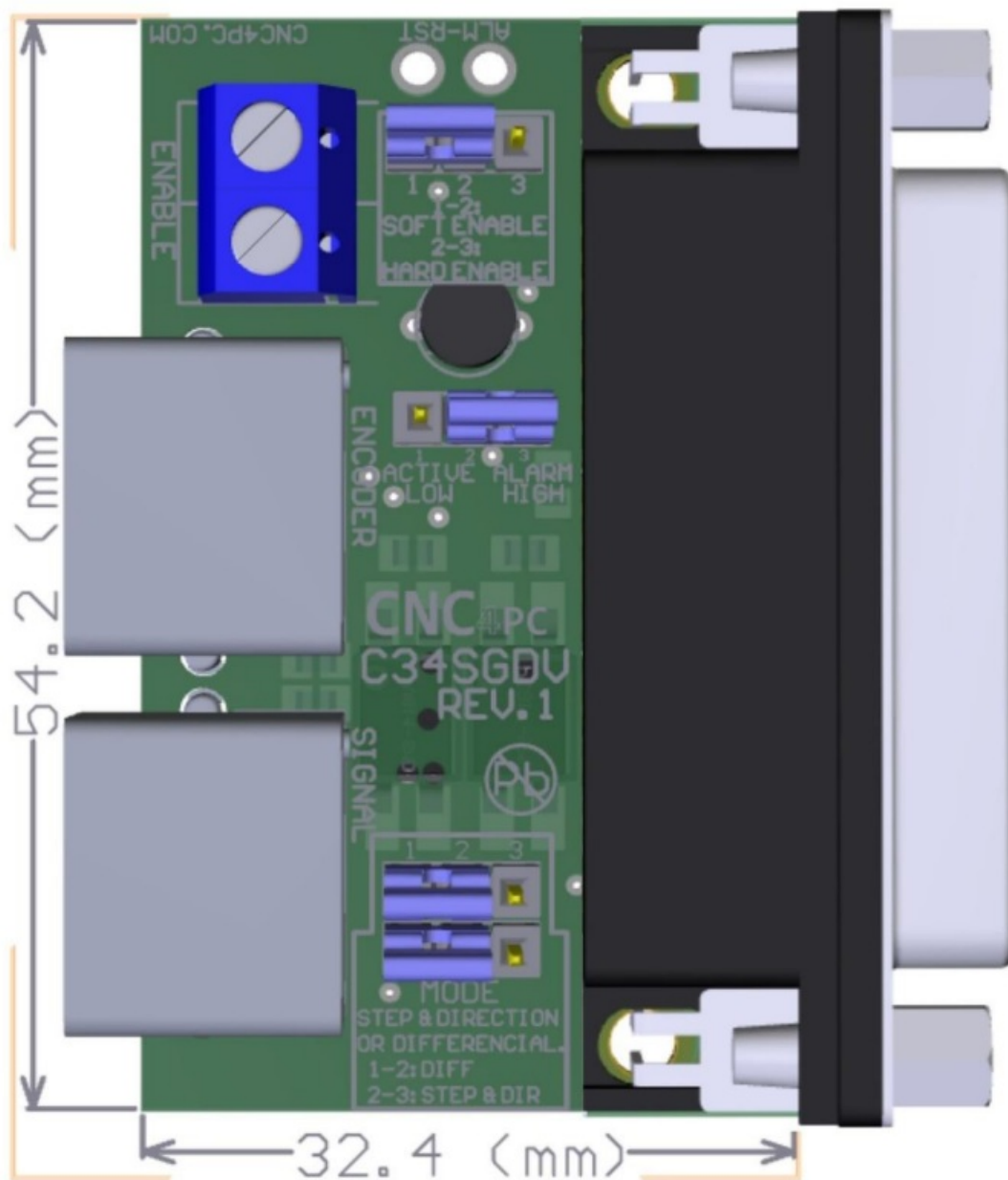
\* Servo ON and Alarm signals are related to the RJ45 pin 5 of the C34SGDV board, but they are not connected directly to this pin.

**RJ45 for Encoder**

DB50 PIN	RJ45 PIN	FUNCTION
–	1	GND
–	2	5VDC
20	3	I-
19	4	I+
34	5	A-
33	6	A+
36	7	B-
35	8	B+

**DIMENSION**





All dimensions are in Millimeters.

## DISCLAIMER

Use caution. CNC machines can be dangerous machines. Neither DUNCAN USA, LLC nor Arturo Duncan are liable for any accidents resulting from the improper use of these devices. This product is not a fail-safe device and it should not be used in life support systems or in other devices where its failure or possible erratic operation could cause property damage, bodily injury or loss of life.

**CNC<sup>4</sup>PC**  
Integration Solutions for CNC Projects

**Documents / Resources**





## **CNC4PC C34SGDV Board** [pdf] User Manual C34SGDV Board, C34SGDV, Board

### References

- [!\[\]\(38441ceaa711016e0bf2ad46ad394ff4\_img.jpg\) \*\*C62 - Dual Port Multifunction Board\*\*](#)
- [!\[\]\(6e027340d4263908f264926b1ad81c5e\_img.jpg\) \*\*C76 - UC300 Multifunction Board.\*\*](#)
- [!\[\]\(781510d64f329bf3c880acf086e884d6\_img.jpg\) \*\*C82 Ethernet Smooth Stepper Breakout board\*\*](#)
- [!\[\]\(93cdf5b84f2bfec404f7441e84b6ba5c\_img.jpg\) \*\*C86 Connector Board for the MASSO Controller\*\*](#)
- [!\[\]\(0f0f932ce3b5577a82f34ad23239a6e5\_img.jpg\) \*\*POKEYS MOTION MOTHER BOARD\*\*](#)

Manuals+.