

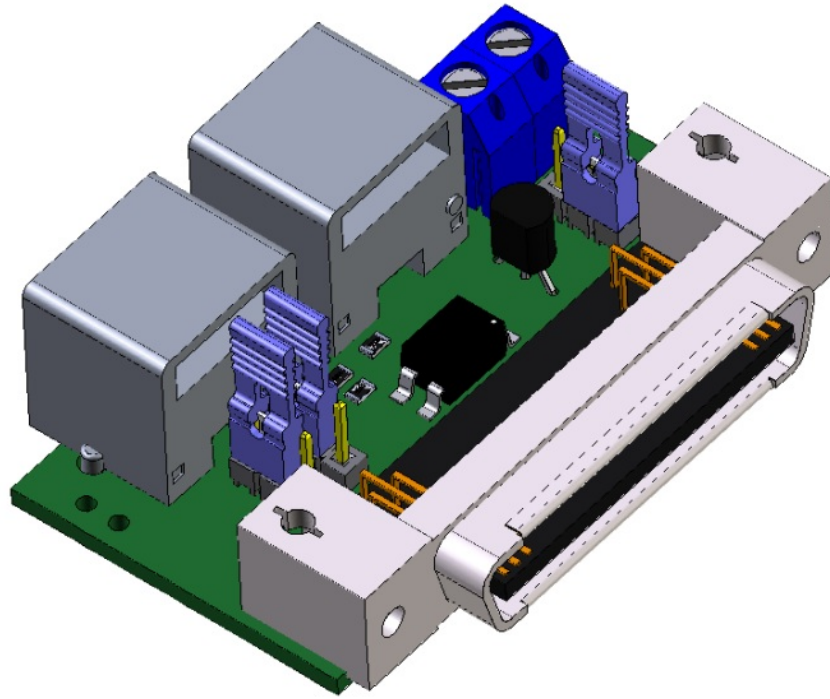
# CNC4PC C34DYN5 Driver Board User Manual

[Home](#) » [CNC4PC](#) » CNC4PC C34DYN5 Driver Board User Manual 

## Contents

- 1 [CNC4PC C34DYN5 Driver Board User Manual](#)
- 2 [1.0 OVERVIEW](#)
- 3 [2.0 FEATURES](#)
- 4 [3.0 BOARD DESCRIPTION](#)
- 5 [4.0 JUMPER TO SELECT THE ENABLE](#)
- 6 [5.0 JUMPER TO SELECT THE DIFFERENTIAL INPUT](#)
- 7 [6.0 WIRING SAMPLE](#)
- 8 [7.0 PINOUT](#)
- 9 [Note:](#)
- 10 [8.0 DIMENSION](#)
- 11 [DISCLAIMER](#)
- 12 [Read More About This Manual & Download PDF:](#)
- 13 [Documents / Resources](#)
- 14 [Related Posts](#)

# CNC4PC C34DYN5 Driver Board User Manual



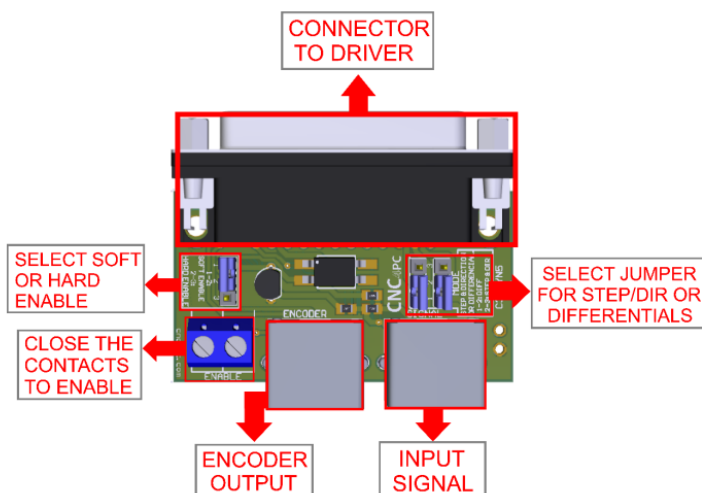
## 1.0 OVERVIEW

This interfaces board is used for the connection between C76, C82 or M16D and the DYN5 AC SERVO DRIVE.

## 2.0 FEATURES

- DB50 Connector for Connecting Driver.
- RJ45 Connector for Axis.
- Select Jumper for Hardware Enable or Software Enable.
- Select Jumper for signals Differential

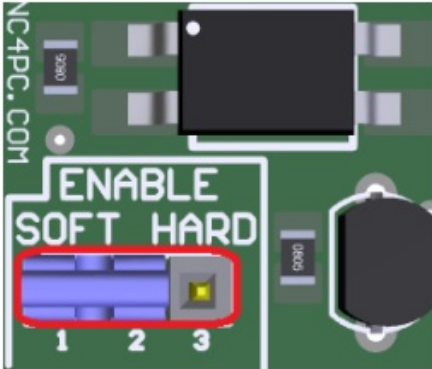
## 3.0 BOARD DESCRIPTION



## 4.0 JUMPER TO SELECT THE ENABLE

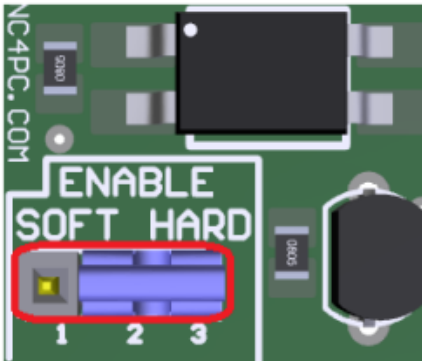
Use Software Enable to keep the driver active only while the system is active.

#### SOFT ENABLE



Use Hardware Enable to keep the driver enabled all the time.

#### HARD ENABLE



### 5.0 JUMPER TO SELECT THE DIFFERENTIAL INPUT

If working the inputs of STEP and DIR as differential signals, you have to use the board C74, set jumper as shown in the image.

#### DIFFERENTIAL



If not use the differential signal for STEP & DIR, set jumper as shown in the image

#### STEP & DIR



## 6.0 WIRING SAMPLE

Diagram of connection with input signals Step & Dir and C76.

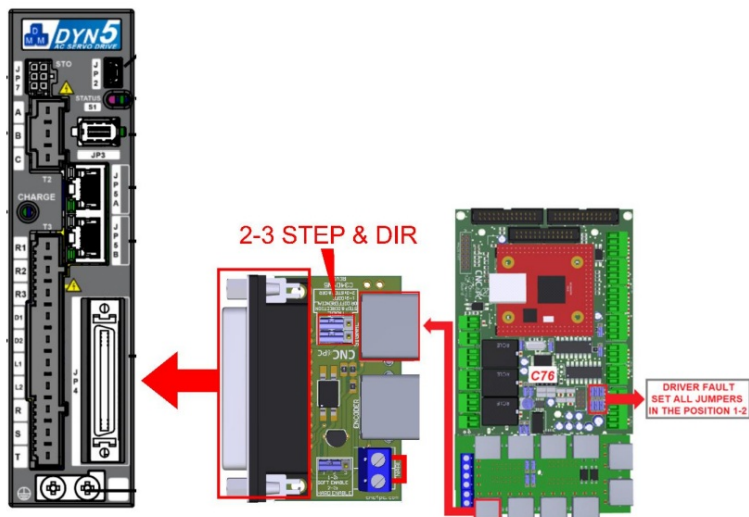
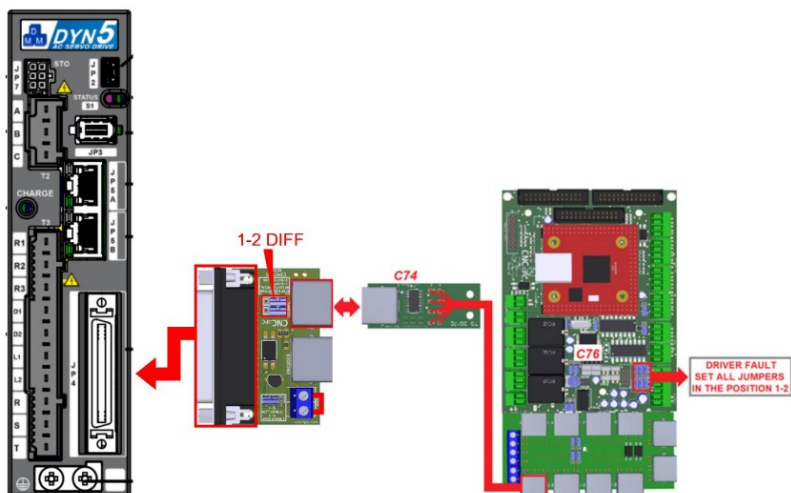


Diagram of connection with input signals Differentials, C74 and C76



## 7.0 PINOUT

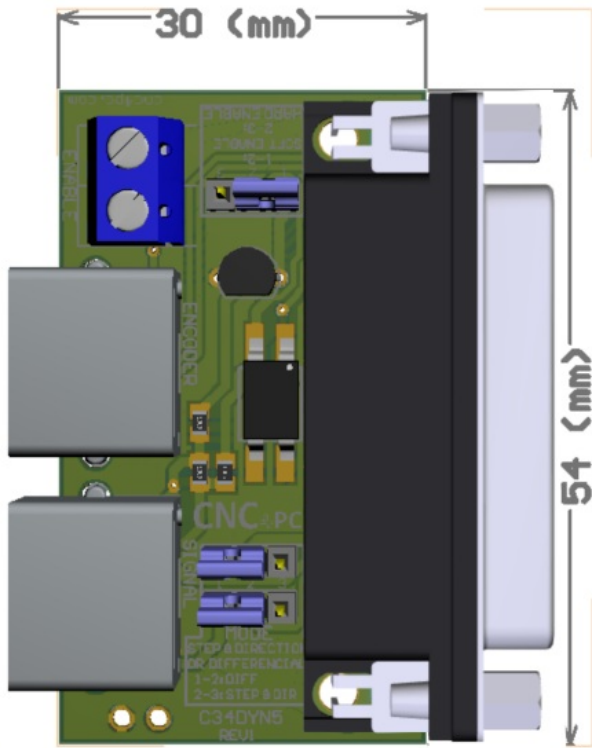
## DYN5 SERVO DRIVE AND C34DYN5 CONNECTION

DB50 PIN	FUNCTION	RJ45 PIN
21	SERVO ENABLE *	5
16	ALARM *	5
3	DIR-	3
4	DIR+	6
5	STEP-	1
6	STEP+	2
17,29,30,39,40	GND	4
19	24VDC INPUT	7

### Note:

\* Servo ENABLE and Alarm signals are related to the RJ45 pin 5 of the C34YN5 board, but they are not connected directly to this pin.

## 8.0 DIMENSION




All dimensions are in Millimeters

## DISCLAIMER

Use caution. CNC machines can be dangerous machines. Neither DUNCAN USA, LLC nor Arturo Duncan are liable for any accidents resulting from the improper use of these devices. This board is not a fail-safe device and it should not be used in life support systems or in other devices where its failure or possible erratic operation could cause property damage, bodily injury or loss of life.

***Read More About This Manual & Download PDF:***

## Documents / Resources

	<p><a href="#">CNC4PC C34DYN5 Driver Board</a> [pdf] User Manual C34DYN5 Driver Board, C34DYN5, Driver Board</p>
---	--