



CNC4PC C34DE-AB Driver to RJ45 Connector Board User Manual

[Home](#) » [CNC4PC](#) » CNC4PC C34DE-AB Driver to RJ45 Connector Board User Manual 

Contents

- [1 CNC4PC C34DE-AB Driver to RJ45 Connector Board User Manual](#)
- [2 1.0 OVERVIEW](#)
- [3 2.0 FEATURES](#)
- [4 3.0 BOARD DESCRIPTION](#)
- [5 4.0 JUMPER TO SELECT THE ENABLE](#)
- [6 JUMPER TO SELECT THE DIFFERENTIAL](#)
- [7 5.0 WIRING SAMPLE](#)
- [8 6.0 PINOUT](#)
- [9 Note:](#)
- [10 7.0 DIMENSIONS](#)
- [11 DISCLAIMER:](#)
- [12 Read More About This Manual & Download PDF:](#)
- [13 Documents / Resources](#)
- [14 Related Posts](#)

CNC4PC C34DE-AB Driver to RJ45 Connector Board User Manual



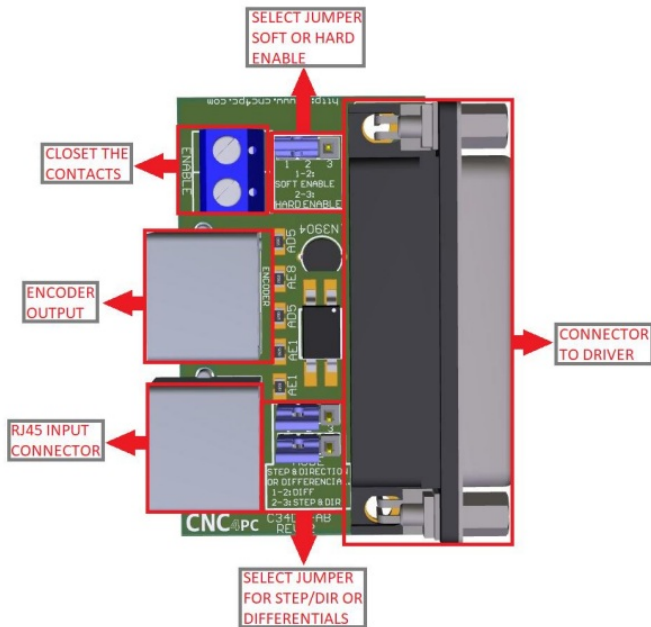
1.0 OVERVIEW

This interfaces board is used for the connection between C32S, C62, M16D, C82 or C35S and the ASDA – AB AC SERVO DRIVE.

2.0 FEATURES

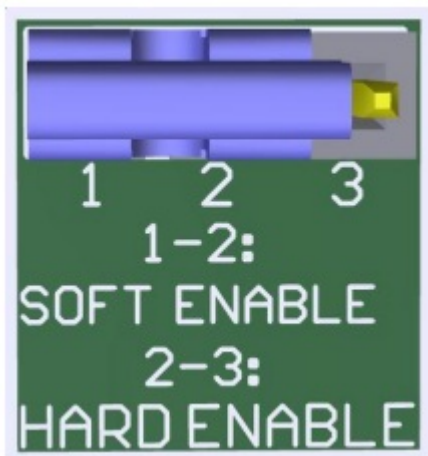
- HDM50D connector for Connection of Driver.
- RJ45 Connector for Axis.
- Encoder Output. *NEW*.
- Select Jumper for Hard Enable or Soft Enable.
- Select jumper for signal differentials. *NEW*.
- Terminals for external drive enable push button.

3.0 BOARD DESCRIPTION

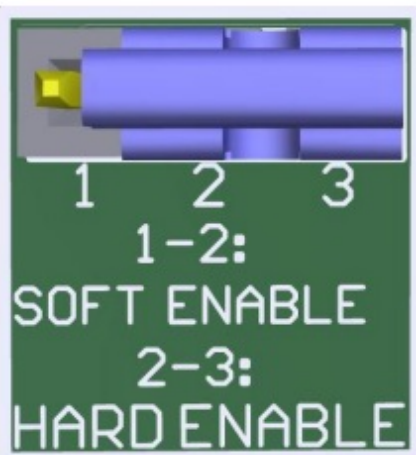


4.0 JUMPER TO SELECT THE ENABLE

Use Software Enable to keep the driver active only while the system is active.



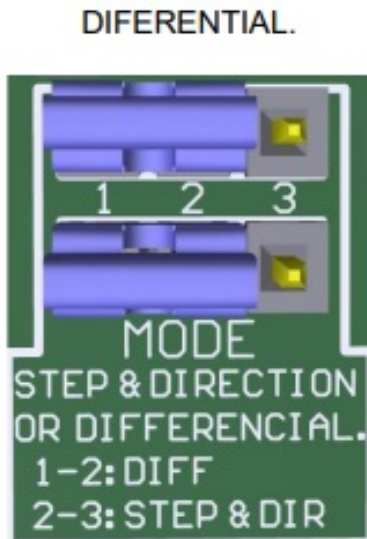
Use Hardware Enable to keep the driver enabled all the time.



Note: This wiring is just to illustrate a sample product application. Specific wiring may vary from system to system. It is the user's responsibility to implement it correctly.

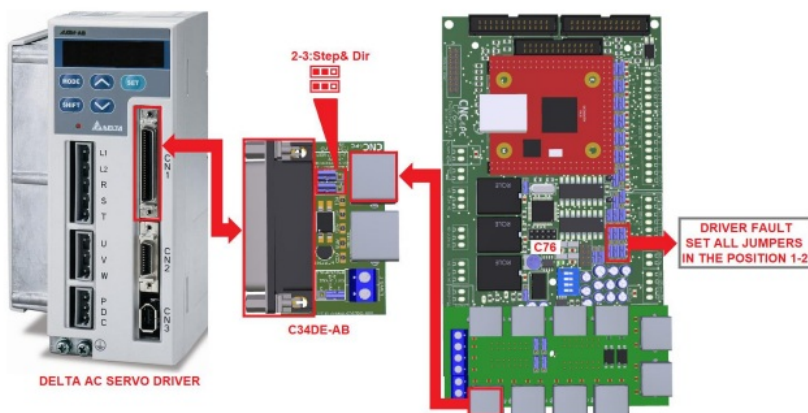
JUMPER TO SELECT THE DIFFERENTIAL

If working the inputs of STEP and DIR as differential signals, you have to use the board, set jumper as shown in the image.

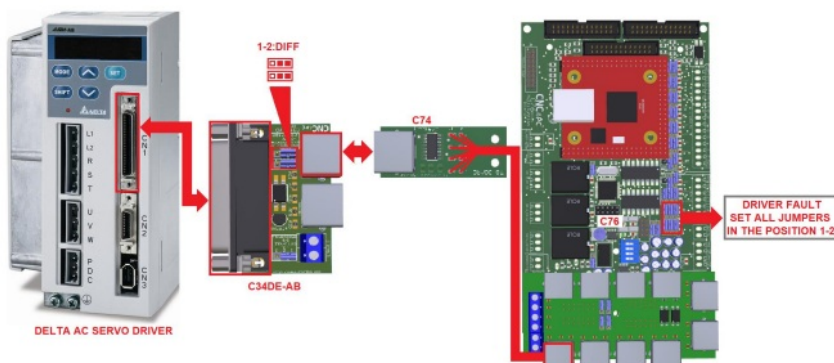


5.0 WIRING SAMPLE

5.1 Diagram of connection with input signals Step & Dir and C76.



5.2 Diagram of connection with input signals Differentials C74 and C76



6.0 PINOUT

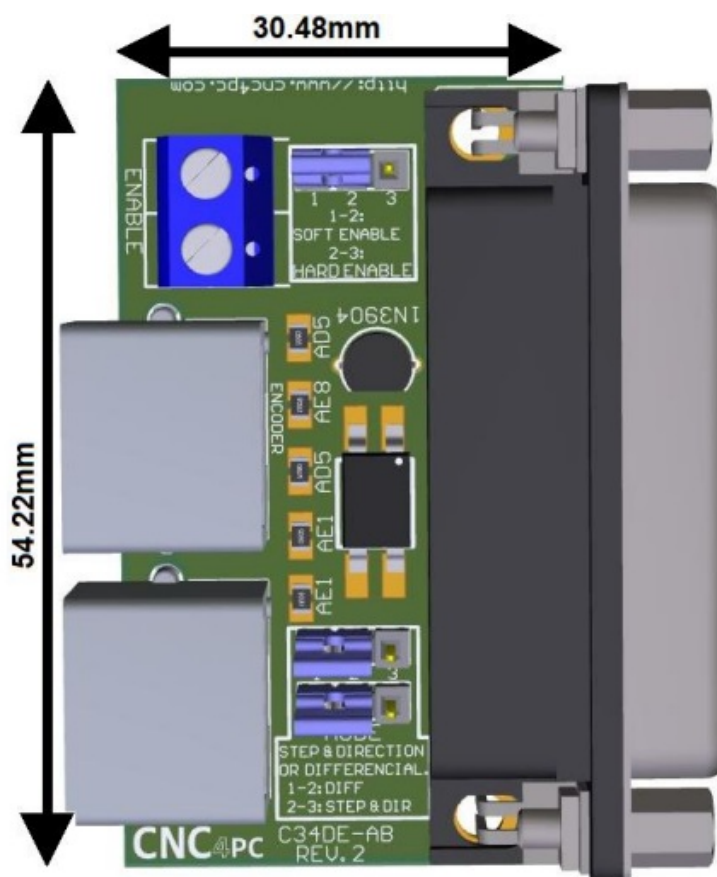
ASDA_AB AC SERVO DRIVE AND C34DE-AB CONNECTION		
MDR PLUG 50 PIN	FUNCTION	RJ45 PIN
9	SERVO ON *	5
11	COM+	Internally routed
45,47,49	COM-	Internally routed
17	24VDC FROM DRIVE	Internally routed
27	GND	4
28	ALARM *	5
37	DIR-	3
36	DIR+	6
41	STEP-	1
43	STEP+	2

Note:

* Servo ON and Alarm signals are related to the RJ45 pin 5 of the C34DE-AB board, but they are not connected directly to this pin.

MDR PLUG 50	RJ45 PIN	FUNCTION
27	1	GND
NC	2	NC
24	3	I-
50	4	I+
22	5	A-
21	6	A+
23	7	B-
25	8	B+

7.0 DIMENSIONS




DISCLAIMER:

Use caution. CNC machines can be dangerous machines. Neither DUNCAN USA, LLC nor Arturo Duncan are liable for any accidents resulting from the improper use of these devices. This board is not a fail-safe device and it should not be used in life support systems or in other devices where its failure or possible erratic operation could cause property damage, bodily injury or loss of life.

Read More About This Manual & Download PDF:

Documents / Resources

	<p>CNC4PC C34DE-AB Driver to RJ45 Connector Board [pdf] User Manual</p> <p>C34DE-AB Driver to RJ45 Connector Board, C34DE-AB, Driver to RJ45 Connector Board, RJ45 Connector Board, Connector Board</p>
---	--