

CMT
DAG-001
DIGITAL
ANGLE
GAUGE



CMT DAG-001 Digital Angle Gauge Instruction Manual

[Home](#) » [CMT](#) » CMT DAG-001 Digital Angle Gauge Instruction Manual 

Contents

- [1 CMT DAG-001 Digital Angle Gauge](#)
- [2 INSTRUCTIONS](#)
- [3 CALIBRATION](#)
- [4 ABSOLUTE AND RELATIVE MEASURING](#)
- [5 TECHNICAL SPECIFICATIONS](#)
- [6 FEATURES](#)
- [7 FREQUENTLY ASKED QUESTIONS](#)
- [8 References](#)
- [9 Related Posts](#)



CMT DAG-001 Digital Angle Gauge



DIGITAL ANGLE GAUGE

Accurately sets saw blade bevel angle. Works great for miter saws and table saws.

- Automatic LCD backlight
- Large display for easy digital reading
- Measurements in absolute or relative mode
- Angles displayed in degrees
- Automatic digit inversion for overhead measurements
- Magnetic base

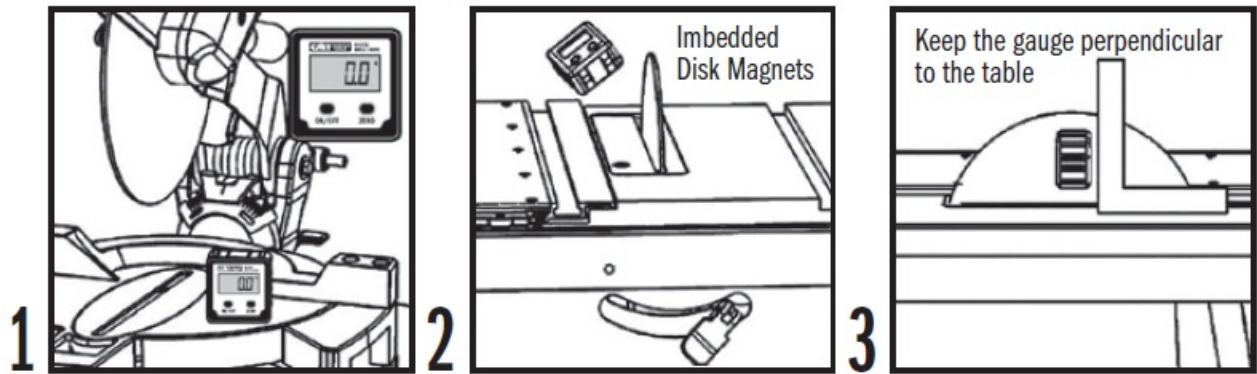
SAFETY FIRST

- Always turn off and unplug your power tools before using your digital angle gauge. Never operate power tools without blade guards. The instructions below do not show guards.

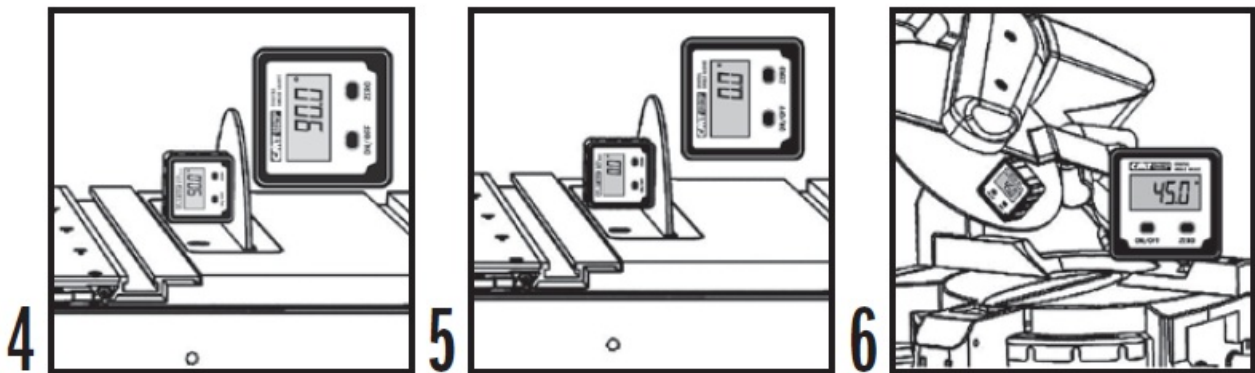
INSTRUCTIONS

1. Set the gauge on a flat surface such as a table saw, a miter saw, or a jointer table. If you use a band saw, the blade will be used as the reference surface.
2. Turn on the gauge and press ZERO on a surface. The display will show 0.0° (Fig. 1).

3. Attach the gauge to your saw blade or jointer blade. The magnetic base will keep the gauge in position (Fig. 2).
Make sure the gauge is kept perpendicular to the table (Fig. 3).



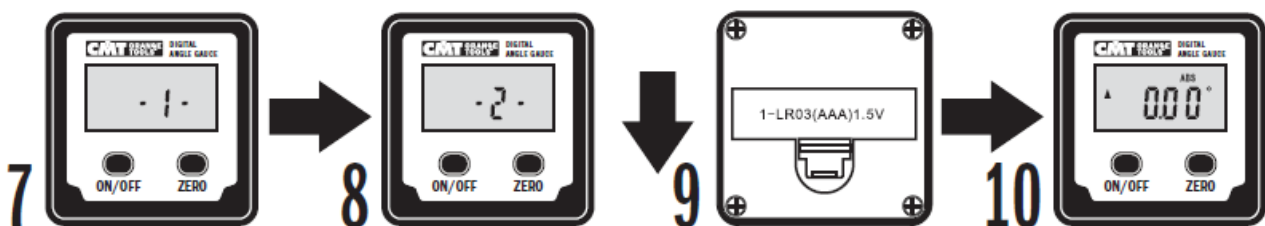
4. The gauge on properly adjusted tools will display 90°. Should the reading be off, readjust the tool following the manufacturer's instructions (Fig. 4).
5. Now you can press ZERO to set the gauge to 0.0° and measure the angle of your cutting tool (Fig. 5 and 6).



CALIBRATION

Calibrate gauge in case of accidental falling, damages, or angle faults only.

1. Place the gauge on a flat surface, and press ON/OFF and ZERO at the same time until "-1-" shows (Fig. 7).
2. Short press ON/OFF. "-1-" should be flashing until "-2-" shows (Fig. 8).
3. Turn the gauge backward 180°, and press ON/OFF. "-2-" should be flashing for a while (Fig. 9).
4. When flashing is over, calibration is completed. The display shows angles in "ABS" mode (Fig. 10).



LOW VOLTAGE

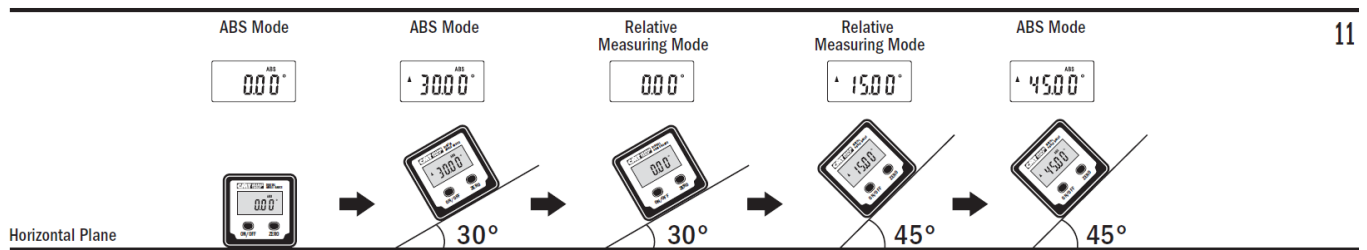
- Replace the battery by opening the slot cover on the back side of the gauge (Fig. 9).

ON/OFF BUTTON

1. Press ON/OFF once to turn the LCD backlight on. The display will show figures in absolute mode (ABS).
2. Keeping the gauge idle for 10 seconds will cause the backlight to turn off. To turn it on again, press ON/OFF or simply move the gauge.
3. Keeping the gauge idle for 5 minutes will cause it to shut off. Press ON/OFF to turn it on again.

ABSOLUTE AND RELATIVE MEASURING

- Turn the gauge on, and press ZERO to set the display to 0.0°. A relative measuring mode is selected.
- To switch to absolute measuring mode, press ON/OFF once. When using the absolute measuring mode, the “ABS” symbol will show on the display.
- Absolute measuring mode calculates the angle between the starting flat surface and the endpoint. Relative measuring mode calculates the distance between 2 intermediate points (Fig. 11).



TECHNICAL SPECIFICATIONS

- **Working range:** 360° ($\pm 90^\circ \times 4$)
- **Resolution:** 0.1°
- **Accuracy:** $\pm 0.1^\circ$
- **Size:** 60x60x28mm (2-3/8"x2-3/8"x1-1/8")
- **Battery:** 1 AAA-1.5V – INCLUDED

FEATURES

- **High Precision:** Is able to measure angles accurately, usually within 0.2 degrees.
- **Range of Measurements:** It can measure angles from 0 degrees to 360 degrees.
- **Easy-to-Read Display:** It has a big, bright LCD screen that makes readings easy to see.
- You can use any angle as the reference point or zero with the zeroing function. This makes measuring relative angles easier.
- **Magnetic Base:** The base has strong magnets that allow it to stick securely to metal objects, which makes it more stable while measurements are being taken.
- **Strong Construction:** Made with strong materials that can stand up to routine use in workshops.
- Small and light, it's easy to carry and store thanks to its compact design.
- **Auto Power Off:** This feature turns off the device automatically after a certain amount of time to save battery life.
- **Hold Function:** This feature lets you keep the present reading on the screen so it's easy to read.

- **Calibration feature:** It has a feature for recalibration to keep the accuracy over time.
- **Digital Accuracy:** Offers digital readouts for accurate readings that can be repeated.
- **Battery Operated:** It runs on normal batteries, usually AAA batteries, which are easy to change and last a long time.
- **Versatile Use:** It can be used for many things, like working with wood, metal, and building things.
- **Angle Conversion:** Able to change measures from exact angles to relative angles.
- **Easy-to-Use Interface:** Simple button settings make it easy to use.
- **Shock-Resistant:** Made to protect against damage from drops and hits, making it last longer.
- The Low Battery Indicator lets you know when the battery is running low, so your device doesn't shut down by accident.
- **Lightweight:** It only weighs a few ounces, so it's easier to use for long periods of time.
- **High Resolution:** It can measure very precisely, usually to the 0.1 degree level.
- **Mounting Options:** It can be attached to many tools and surfaces, such as saw blades, miter gauges, and other machinery.

www.cmtorangetools.com

FREQUENTLY ASKED QUESTIONS

What are the dimensions of the CMT DAG-001 Digital Angle Gauge?

The CMT DAG-001 Digital Angle Gauge has product dimensions of 8 x 8 x 3 inches.

How much does the CMT DAG-001 Digital Angle Gauge weigh?

The item weight of the CMT DAG-001 is 4.2 ounces, which makes it lightweight and portable.

What type of battery is required for the CMT DAG-001 Digital Angle Gauge?

The CMT DAG-001 requires one AAA battery to operate.

What is the price of the CMT DAG-001 Digital Angle Gauge?

The CMT DAG-001 Digital Angle Gauge is priced at \$43.07.

What warranty does the CMT DAG-001 Digital Angle Gauge come with?

The CMT DAG-001 comes with a 1-year warranty that covers defects in materials and workmanship.

Where can I find the UPC and GTIN for the CMT DAG-001 Digital Angle Gauge?

The UPC for the CMT DAG-001 is 664252030828, and the Global Trade Identification Number (GTIN) is 00664252030828.

What is the manufacturer's name for the CMT DAG-001 Digital Angle Gauge?

The manufacturer of the CMT DAG-001 Digital Angle Gauge is CMT.

Why isn't the CMT DAG-001 Digital Angle Gauge turning on?

Ensure that the batteries are correctly installed and have sufficient charge. If the batteries are dead or inserted incorrectly, the angle gauge will not power on.

What should I do if the CMT DAG-001 Digital Angle Gauge is not displaying accurate readings?

Calibrate the gauge by placing it on a flat surface and pressing the calibration button. Ensure the surface is perfectly level for accurate calibration.

How can I fix the CMT DAG-001 Digital Angle Gauge if the display is flickering?

Flickering display may indicate low battery power. Replace the batteries with new ones. If the issue persists, check for any loose connections or damage.

Why does the CMT DAG-001 Digital Angle Gauge keep turning off by itself?

This issue could be due to low battery power or the auto-off feature. Replace the batteries. If the problem persists, check if the auto-off feature is enabled and adjust the settings accordingly.

What should I do if the CMT DAG-001 Digital Angle Gauge is not holding its calibration?

Ensure the calibration is done on a stable, flat surface. If the gauge continues to lose calibration, it may need to be recalibrated frequently or inspected for internal issues.

How do I clean the CMT DAG-001 Digital Angle Gauge?

Use a soft, dry cloth to clean the exterior of the gauge. Avoid using water or harsh chemicals as they can damage the electronic components.

Why is there a delay in the display updating on my CMT DAG-001 Digital Angle Gauge?

A delay in the display can be caused by low battery power or electronic interference. Replace the batteries and move the gauge away from other electronic devices.

How can I fix the CMT DAG-001 Digital Angle Gauge if the backlight isn't working?

Verify that the batteries are fully charged and correctly inserted. If the backlight still does not work, the backlight LED may be defective and need repair or replacement.

DOWNLOAD THE PDF LINK: [CMT DAG-001 Digital Angle Gauge Instruction Manual](#)

References

- [User Manual](#)

Manuals+. Privacy Policy

This website is an independent publication and is neither affiliated with nor endorsed by any of the trademark owners. The "Bluetooth®" word mark and logos are registered trademarks owned by Bluetooth SIG, Inc. The "Wi-Fi®" word mark and logos are registered trademarks owned by the Wi-Fi Alliance. Any use of these marks on this website does not imply any affiliation with or endorsement.