



# CMI RTS24 Do it Best Rotating Tree Stand for Artificial Trees Instruction Manual

[Home](#) » [CMI](#) » CMI RTS24 Do it Best Rotating Tree Stand for Artificial Trees Instruction Manual 

## Contents

- [1 CMI RTS24 Do it Best Rotating Tree Stand for Artificial Trees](#)
- [2 PARTS](#)
- [3 ASSEMBLY](#)
- [4 REMOTE CONTROL](#)
- [5 CHANGING THE FUSE](#)
- [6 NOTICE & WARNING](#)
- [7 FCC](#)
- [8 Documents / Resources](#)
- [9 Related Posts](#)



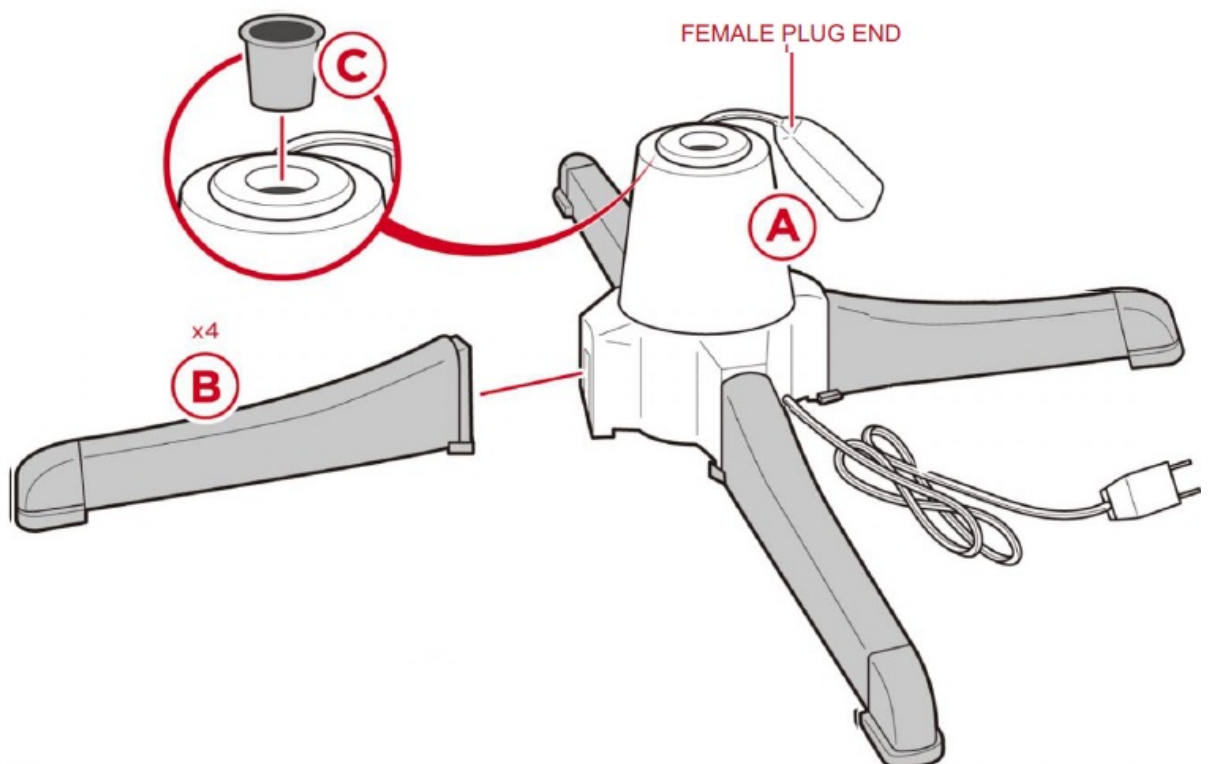
**CMI RTS24 Do it Best Rotating Tree Stand for Artificial Trees**



## PARTS



## ASSEMBLY



1. Slide four part B legs on to the part A base.
2. The center hole of stand is fit for DIA 1.26 inches tree pole. If your tree's pole diameter is less than 1.26 inches, Please insert adapter C in the stand before you insert the tree into stand .(**NOTE:** White one fit for DIA 0.88 inches pole, Green one fit for DIA 0.75 inches pole)
3. Insert the tree into Stand, If the tree has lights, plug the lights into the female plug end. and Plug tree stand into a wall outlet(AC 120V).

## REMOTE CONTROL



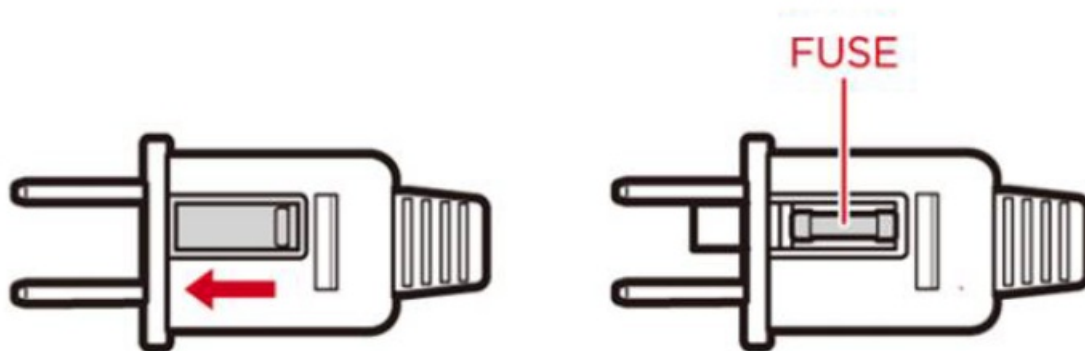
### 2.4G wireless remote control

The first, please connect base's power supply and put 2 AAA battery on the remote control. Now you can start using.

- **The first click:** just lights on.
- **The second click:** lights on and tree rotating.
- **The third click:** All Off.

The maximum operating distance of the remote control is 20 meters. Please put away the remote control after use.

## CHANGING THE FUSE



1. Pull the power cord from the outlet.
2. Slide open the fuse access cover by pushing it towards the blades of the plug.
3. Carefully remove the fuse. Push the fuse from the other side or turn the fuse holder over.
4. Replace fuse with a 5 Amp, 125 Volt fuse only.
5. Close the fuse access cover.

## NOTICE & WARNING

1. This item is not a toy. Do not allow children to operate this item.
2. This tree stand is for an artificial tree only.
3. Place tree stand on a stable and level surface.
4. Item is intended for indoor use only.
5. This seasonal product is not intended for permanent installation or use.
6. If tree has lights, make sure lights are secure and do not get tangled during rotation.
7. Do not use or store this item in the proximity of open flame, flammable/combustible chemicals, or other strong heat sources.
8. If any parts are missing, broken, damaged, or worn, stop using this item until repairs are made and/or factory replacement parts are installed.
9. Do not use this item in a way inconsistent with the manufacturer's instructions as this could void the product warranty.
10. Remove tree from stand before storage. Store in a cool and dry place protected from sunlight.

Unplug item during assembly, disassembly, and if left unattended. Do not place this item in a wet location. Do not close doors or windows on the wires or power cord. Do not secure wires or cord with staples, nails, or sharp hooks. Do not cover item with cloth, paper, or any other material. This item has a polarized plug (one blade wider than the other), so the plug must be oriented correctly to fit into the plug. This item has overload protection to indicate an overload or short-circuit situation. 'X'

- **ELECTRICAL RATING:** AG 120V
- **MAX TREE WEIGHT:** 80 lbs
- **MAX TREE HIGH:** 7.5 feet
- **FRAME DIAMETER 1:** 26 inches or 0.88/0.76 inches (with adapters)

## FCC

This device complies with part 15 of the FCC Rules. Operation is subject to the following two conditions: (1) This

device may not cause harmful interference, and (2) this device must accept any interference received, including interference that may cause undesired operation. Any changes or modifications not expressly approved by the party responsible for compliance could void the user's authority to operate the equipment.

**NOTE:** This equipment has been tested and found to comply with the limits for a Class B digital device, pursuant to Part 15 of the FCC Rules. These limits are designed to provide reasonable protection against harmful interference in a residential installation. This equipment generates, uses and can radiate radio frequency energy and, if not installed and used in accordance with the instructions, may cause harmful interference to radio communications. However, there is no guarantee that interference will not occur in a particular installation. If this equipment does cause harmful interference to radio or television reception, which can be determined by turning the equipment off and on, the user is encouraged to try to correct the interference by one or more of the following measures:

- Reorient or relocate the receiving antenna.
- Increase the separation between the equipment and receiver.
- Connect the equipment into an outlet on a circuit different from that to which the receiver is connected.
- Consult the dealer or an experienced radio/TV technician for help.

The device has been evaluated to meet general RF exposure requirement. The device can be used in portable exposure condition without restriction.

## Documents / Resources



[CMI RTS24 Do it Best Rotating Tree Stand for Artificial Trees](#) [pdf] Instruction Manual  
EST0326, 2BAD8-EST0326, 2BAD8EST0326, RTS24 Do it Best Rotating Tree Stand for Artificial Trees, RTS24, Do it Best Rotating Tree Stand for Artificial Trees