

club^{3D}

**3D CSV-1381
MST Port
Replicator
GeeWiz**



Club 3D CSV-1381 MST Port Replicator GeeWiz Installation Guide

[Home](#) » [Club-3D](#) » Club 3D CSV-1381 MST Port Replicator GeeWiz Installation Guide 

Contents

- [1 Club 3D CSV-1381 MST Port Replicator GeeWiz](#)
- [2 Product Overview](#)
- [3 How to select the Input Source](#)
- [4 Documents / Resources](#)
 - [4.1 References](#)
- [5 Related Posts](#)



Club 3D CSV-1381 MST Port Replicator GeeWiz



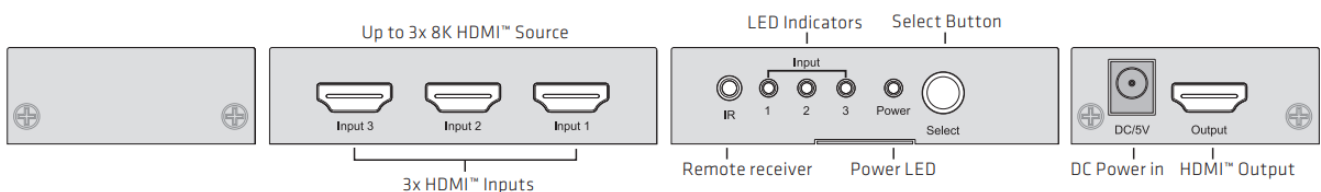
Product Overview

Thank you for purchasing our CSV-1381 Product . After unpacking the product, please make sure you have all the items provided and check for any damages. In case of any missing/damaged parts please inform your supplier immediately.

You should have:

- Club 3D CSV-1381 3 to 1 HDMI™ 8K60Hz Switch
- IR Remote controller (incl CR2025 Battery)
- Power Supply 100-240VAC/ 5V1A DC(Please Specify Plug type when ordering)
- QR Code for downloading the Quick Install Guide (QIG)

The Club 3D CSV-1381 is a 3 to 1 HDMI™2.1a spec. Switch that routes your high-definition video and digital audio from any one of the HDMI™ inputs to an 8K60Hz/4K120Hz HDMI™ output. The easiest way of connecting your High-Resolution game consoles and/or your PC/Laptop to 1 High-Resolution HDMI™ display up to 8K60Hz or 4K120Hz. All inputs are capable of accommodating up to 8K60Hz/4K120Hz high definition video sources simultaneously. The output sends the high-definition audio/video signals to a high definition(8K60Hz) HDMI™2.1a spec. Display. Switching inputs can be done by key pressing, on the unit itself, or with an IR remote unit for easy switching.

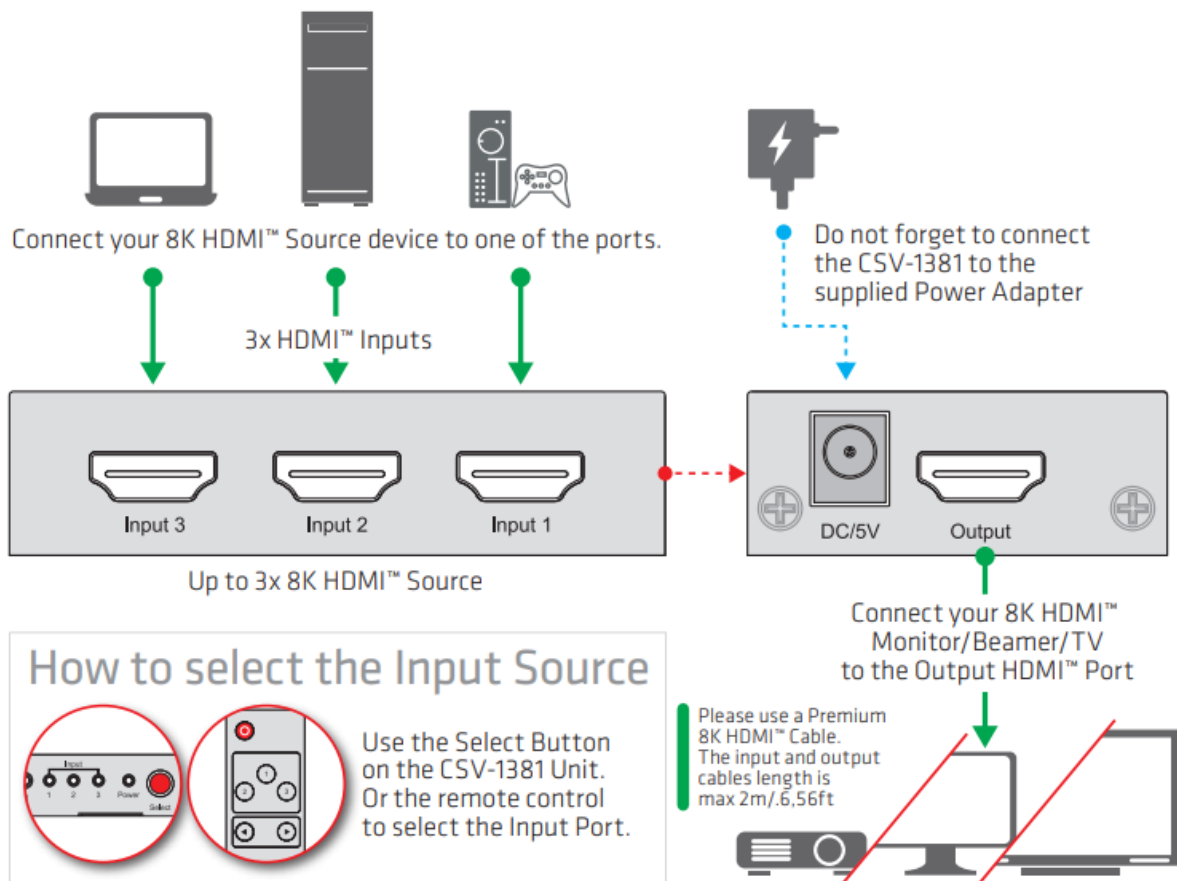


- On the Remote controller, please remove the protective insulation from the battery to make it operational
- Please connect your Display to the Connector marked Output
- Connect your various source equipment to the respective Input connectors
- Connect the Power supply to the DC Power Input jack
- Select your desired input by pressing the Select button on the front of the unit- or- by pressing the desired Input number on the remote controller or press the forward/backward arrows till the desired Input is selected. The selected input will be lit on the front of the unit.

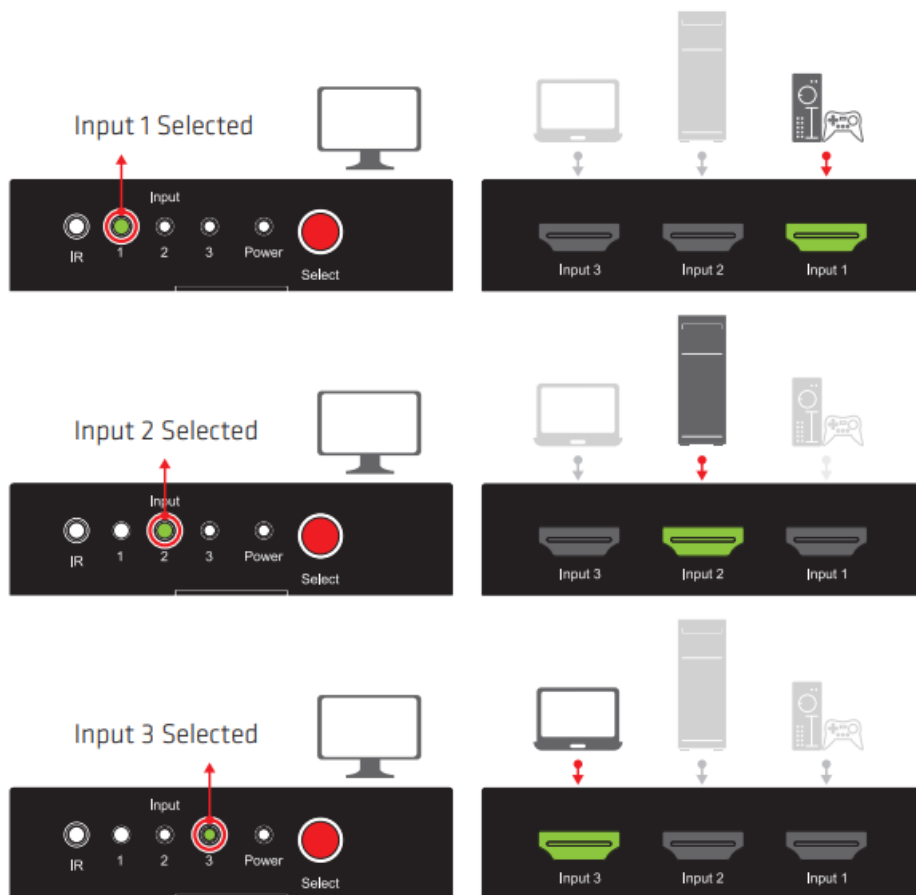
In case you need support with choosing the correct HDMI™ cables, don't hesitate to contact us and it will be our pleasure to assist you.

NOTE:

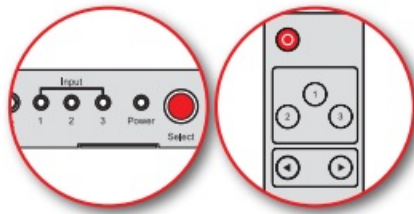
- Please update your TV Firmware to the version which supports these resolutions/refresh rates !
- Please update your Graphic drivers on your PC and make sure that DSC1.2 is supported on your devices to support the these resolutions/refresh rates!



How to select the Input Source



Use the Select Button on the front panel of the CSV-1381 Unit. Or the remote control (number 1,2 ,3 or use the forward/backward arrows) to select the Input Port.



Disclaimer: While we endeavour to provide the most accurate, up-to-date information available, the content on this document may be out of date or include omissions, inaccuracies or other errors. Products might obtain a certification during their lifetime. This doesn't change or alter the product specifications and/or performance in any way. Club 3D will provide the updated information on their website www.Club-3d.com at her discretion. Therefore Club 3D does not accept any rights claimed on the content of this document. Please refer to a full overview of our Legacy Terms and Conditions on www.club-3d.com. All other brand names are trademarks or registered trademarks and are the property of their respective owners. All content is subject to change without prior notice. Copyright © 2023, Club 3D B.V. www.club-3d.com

Documents / Resources

	Club 3D CSV-1381 MST Port Replicator GeeWiz [pdf] Installation Guide CSV-1381 MST Port Replicator GeeWiz, CSV-1381, MST Port Replicator GeeWiz, Port Replicat or GeeWiz, Replicator GeeWiz, GeeWiz
--	---

References

- [User Manual](#)

Manuals+. Privacy Policy

This website is an independent publication and is neither affiliated with nor endorsed by any of the trademark owners. The "Bluetooth®" word mark and logos are registered trademarks owned by Bluetooth SIG, Inc. The "Wi-Fi®" word mark and logos are registered trademarks owned by the Wi-Fi Alliance. Any use of these marks on this website does not imply any affiliation with or endorsement.