



Flex3 Wireless
Terminal Velocity
Merchant



clover Flex3 Wireless Terminal Velocity Merchant User Guide

[Home](#) » [clover](#) » clover Flex3 Wireless Terminal Velocity Merchant User Guide 

Contents

- [1 clover Flex3 Wireless Terminal Velocity Merchant](#)
- [2 Included Parts](#)
- [3 Installation Instructions](#)
- [4 Safety Instructions](#)
- [5 FCC STATEMENT](#)
- [6 Documents / Resources](#)
 - [6.1 References](#)
- [7 Related Posts](#)

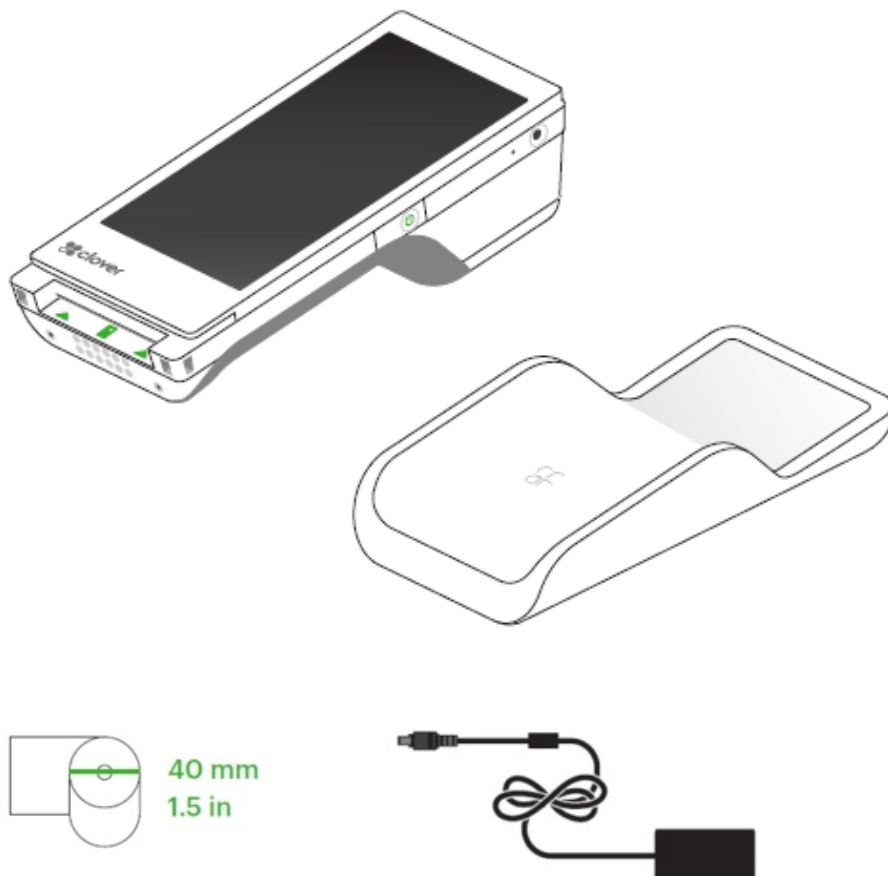


clover Flex3 Wireless Terminal Velocity Merchant



clover.com/help

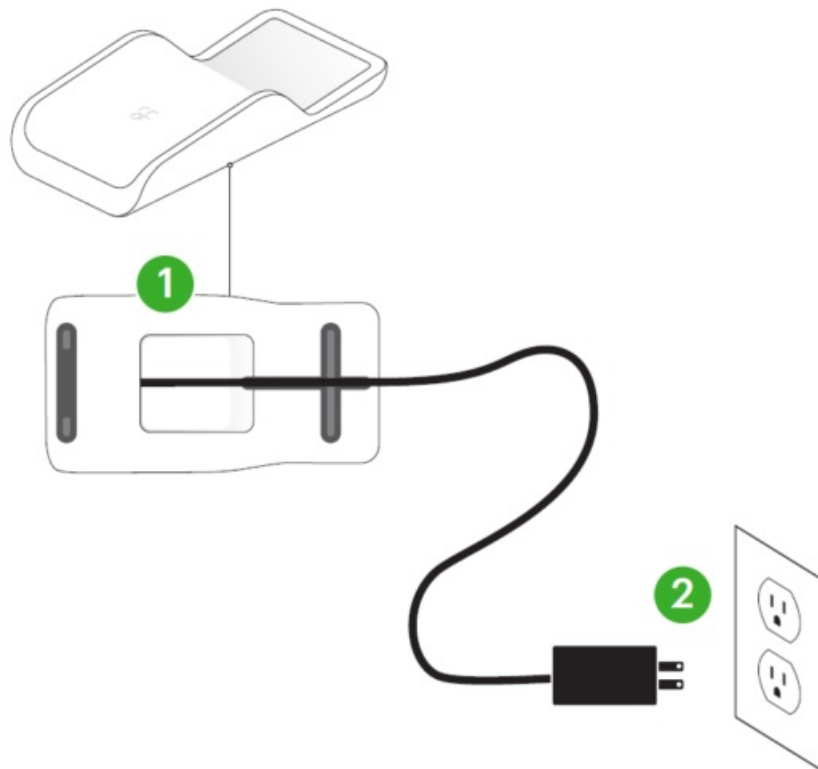
Included Parts

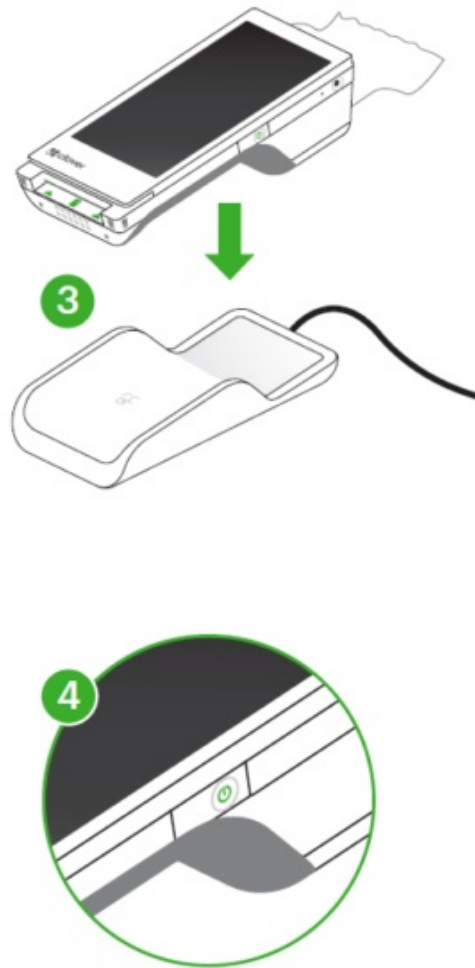


Select regions



Installation Instructions





Safety Instructions

Observe the following safety precautions. Failure to do so may result in equipment failure, damage, or heat-induced burns.

1. Store in a dry location and clean with a dry cloth.
2. Do not disassemble or modify the device.
3. While charging, do not put any metallic object between the charging area on the cradle and the Clover Flex.
4. Do not charge any device other than the Clover Flex. The charging cradle is designed only for the Clover Flex.

FCC STATEMENT

FCC Part 15

This device complies with Part 15 of the FCC Rules. Operation is subject to the following two conditions:

1. This device may not cause harmful interference,
2. This device must accept any interference received, including interference that may cause undesired operation.

FCC Part 15 Class B-specific

Note: This equipment has been tested and found to comply with the limits for a Class B digital device, pursuant to part 15 of the FCC Rules. These limits are designed to provide reasonable protection against harmful interference in a residential installation. This equipment generates, uses and can radiate radio frequency energy and, if not installed and used in accordance with the instructions, may cause harmful interference to radio communications. However, there is no guarantee that interference will not occur in a particular installation. If this equipment does

cause harmful interference to radio or television reception, which can be determined by turning the equipment off and on, the user is encouraged to try to correct the interference by one or more of the following measures:

- Reorient or relocate the receiving antenna.
- Increase the separation between the equipment and receiver.
- Connect the equipment into an outlet on a circuit different from that to which the receiver is connected.
- Consult the dealer or an experienced radio/TV technician for help.

FCC Warning

Changes or modifications not expressly approved by the party responsible for compliance could void the user's authority to operate the equipment.

FCC Radiation Exposure Statement

This device must not be co-located or operating in conjunction with any other antenna or transmitter. This device has been tested and meets FCC RF exposure guidelines. Use with an accessory that contains metal may not ensure compliance with FCC RF exposure guidelines.

Innovation, Science and Economic Development Canada (ISED) statement: CAN ICES-3 (B)/NMB-3(B)

This device complies with ISED's licence-exempt RSSs. Operation is subject to the following two conditions:

1. This device may not cause harmful interference, and
2. This device must accept any interference received, including interference that may cause undesired operation.

Caution

1. The device for operation in the band 5150-5250 MHz is only for indoor use to reduce the potential for harmful interference to co-channel mobile satellite systems;
2. Where applicable, antenna type(s), antenna models(s), and worst-case tilt angle(s) necessary to remain compliant with the e.i.r.p. elevation mask requirement set forth in section 6.2.2.3 shall be clearly indicated.

Radiation Exposure Statement

1. To comply with the Canadian RF exposure compliance requirements, this device and its antenna must not be co-located or operating in conjunction with any other antenna or transmitter.
2. This device has been tested and meets RF exposure guidelines when used with an accessory that does not contain any metal. Use of other accessories may not ensure compliance with RF exposure guidelines.

IMPORTANT for UK Power Adapter Cord

If the available socket outlet is not suitable for the plug supplied with this equipment, it should be cut off and an appropriate three pin plug fitted. With alternative plugs on approved 3 amp fuse must be fitted in the plug or adaptor or in the main fuse box. The plug severed from the mains lead must be destroyed, as a plug with bared flexible cords is hazardous if engaged in a live socket outlet. In the event of replacing the plug fuse, use a 3 amp fuse approved by ASTA to BS 1362, i.e. carries the mark. Always replace the fuse cover, never use plugs with the fuse cover omitted.

WARNING — THIS APPLIANCE MUST BE EARTHED.

The wires in this mains lead are coloured in accordance with the following code:

Green-and-Yellow = Earth Blue = Neutral Brown = Live

As the colour of the wiring in the mains lead of this appliance may not correspond with the coloured markings

identifying the terminals in your plug, proceed as follows:

- The wire which is coloured Green-and-Yellow must be connected to the terminal in the plug which is marked with the letter “E”, or by the earth symbol or coloured Green-and-Yellow.
- The wire which is coloured Blue must be connected to the terminal which is marked with the letter “N” or coloured Black or Blue.
- The wire which is coloured Brown must be connected to the terminal which is marked with the letter “L” or coloured Red or Brown.

CE RF Exposure Compliance

This device meets the EU requirements (1999/519/EC) and the International Commission on Non-Ionizing Radiation Protection (ICNIRP) on the limitation of exposure of the general public to electromagnetic fields by way of health protection. This device is restricted to indoor use only when operating in the 5150 to 5350 MHz frequency range.

EU Declaration of Conformity

Hereby, Clover Network, LLC declares that the radio equipment type, C405/K405 is in compliance with Directive 2014/53/EU. The full text of the EU declaration of conformity is available at the following internet address:

eu.clover.com/eu-compliance

The frequency band and the maximum transmitted power in EU are listed below:

WWAN

- LTE Band3: 23 dBm (Conducted)
- LTE Band7: 23 dBm (Conducted)
- LTE Band20: 23 dBm (Conducted)

WLAN

- 2 400 MHz – 2 483.5 MHz: 20 dBm (EIRP)
- 5 150 MHz – 5 250 MHz: 23 dBm (EIRP)
- 5 250 MHz – 5 350 MHz: 23 dBm (EIRP)
- 5 470 MHz – 5 725 MHz: 23 dBm (EIRP)

CE max SAR

- Body: 1.844W/Kg
- Limb: 3.382W/Kg

NFC

- -4.92 dBμA/m @10m

Wireless Charger

- 100~200KHz: 81.5 dBμV/m @10m

Restrictions in

AT/BE/BG/CZ/DK/EE/FR/DE/IS/IE/IT/EL/ES/CY/LV/LI/LT/LU/HU/MT/NL/NO/PL/PT/RO/SI/SK/TR/FI/SE/CH/UK(NI)/HR/UK. 5150MHz-5350MHz is for indoor use only.

Caution: Exposure to Radio Frequency Radiation

This product complies with EU requirements regarding restriction of exposure of persons to radio-frequency energy (RF) emitted by telecommunication and radio devices as it is designed and manufactured in such a way as not to exceed the exposure limits indicated by the European Union Commission. The permitted SAR limit for the general population is 2.0 W/Kg for body and 4.0 W/Kg for limb. This limit guarantees an ample safety margin that protects all persons regardless of age and health condition. SAR is measured with the device at 5mm to the body and at 0mm to the extremity, while transmitting at the highest certified output power level in all frequency bands of the device. The highest SAR level recorded for this model was equal to body 1.844W/Kg, & limb 3.382W/Kg.

Clover Flex 3 Terminal Punto de Venta (Clover Flex)

- Model Number: C405

Clover Flex Wireless Cradle

- Model Number: K405

Patent

clover.com/patents

Clover Network, LLC

415 N Mathilda Ave
Sunnyvale, CA 94085, USA

EU Importer:

Marketplace Merchant Solutions Ltd
Unit 9, Richview Office Park
Clonskeagh, Dublin 14, Ireland


Waste Electrical and Electronic Equipment-WEEE







NOTE: This product is covered electronic equipment under the European Union's Waste from Electrical and Electronic Equipment ("WEEE") Directive (2012/19/EU). The WEEE Directive requires that covered equipment be collected and managed separately from typical household waste in all EU member states. Please follow the guidance of your local environmental authority or ask the shop where you purchased the product for collection or recycling options.



Documents / Resources

| | |
|---|--|
|  <p>clover Flex Quick Start Guide Kortstartgids / Instructions de démarrage Guía de inicio rápido / Instruktionsskript Clover Flex3 Wireless Merchant clover.com/flex3</p> | <p>clover Flex3 Wireless Terminal Velocity Merchant [pdf] User Guide</p> <p>Flex3 Wireless Terminal Velocity Merchant, Flex3, Wireless Terminal Velocity Merchant, Terminal Velocity Merchant, Velocity Merchant, Merchant</p> |
|---|--|

References

-  [Clover Help](#)
-  [POS System & Credit Card Readers | Clover](#)
-  [Clover](#)
-  [Anatel — Agência Nacional de Telecomunicações](#)
- [User Manual](#)

Manuals+. [Privacy Policy](#)

This website is an independent publication and is neither affiliated with nor endorsed by any of the trademark owners. The "Bluetooth®" word mark and logos are registered trademarks owned by Bluetooth SIG, Inc. The "Wi-Fi®" word mark and logos are registered trademarks owned by the Wi-Fi Alliance. Any use of these marks on this website does not imply any affiliation with or endorsement.