

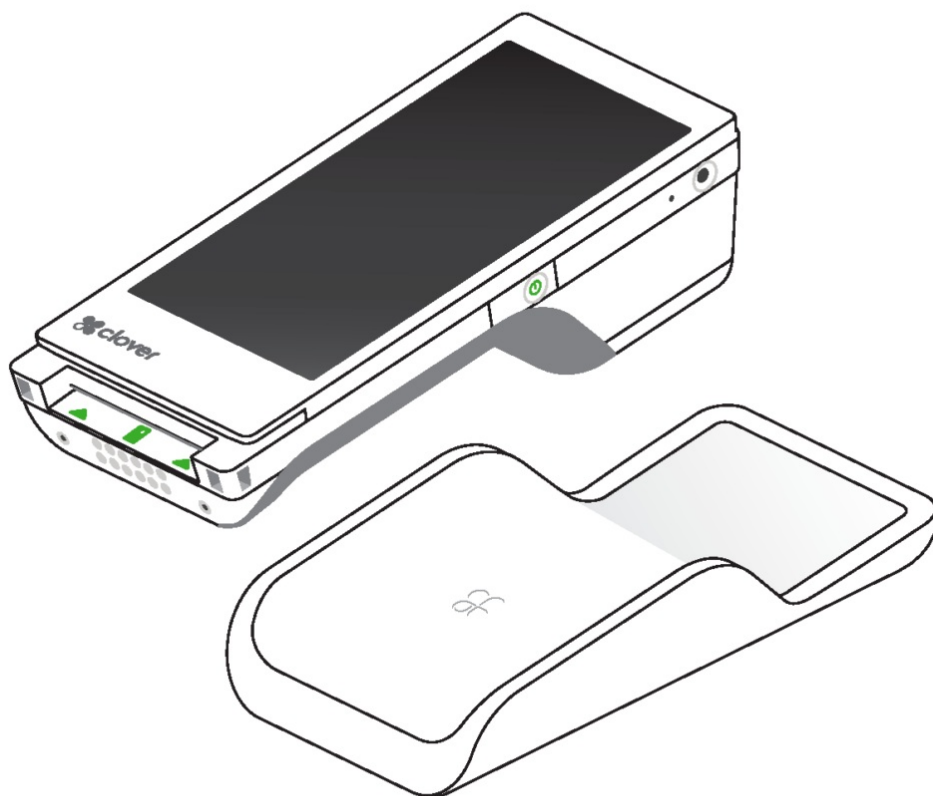
## clover Flex Handheld POS System User Guide

[Home](#) » [clover](#) » clover Flex Handheld POS System User Guide 

### Contents

- 1 [clover Flex Handheld POS System](#)
- 2 [Included](#)
- 3 [Select regions](#)
- 4 [FCC Part 15](#)
- 5 [FCC Part 15 Class B-specific](#)
- 6 [FCC Warning](#)
- 7 [FCC Radiation Exposure Statement](#)
- 8 [Specifications:](#)
- 9 [Product Usage Instructions:](#)
  - 9.1 [Safety Precautions:](#)
  - 9.2 [Product Care Instructions:](#)
  - 9.3 [Regulatory Compliance:](#)
  - 9.4 [EU Declaration of Conformity:](#)
- 10 [FAQ:](#)
  - 10.1 [Q: Can I use accessories containing metal with the Clover Flex?](#)
  - 10.2 [Q: What should I do if I encounter interference issues with the device?](#)
- 11 [Documents / Resources](#)
  - 11.1 [References](#)
- 12 [Related Posts](#)

**clover Flex Handheld POS System**

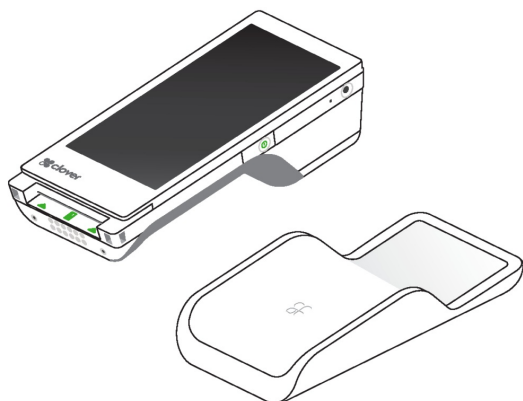


## USER GUIDE

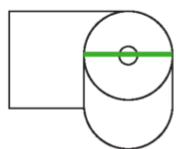
[clover.com/help](https://clover.com/help)

### Included

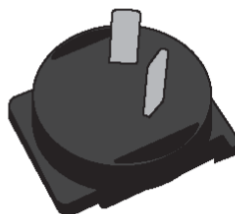
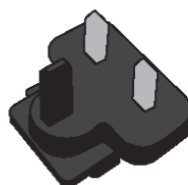
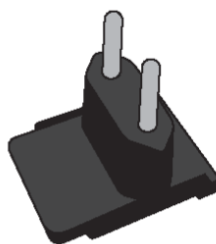
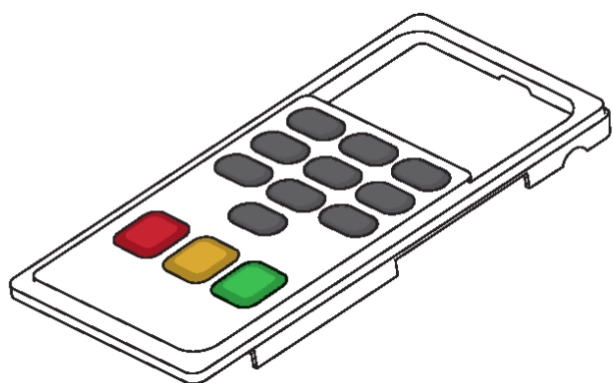
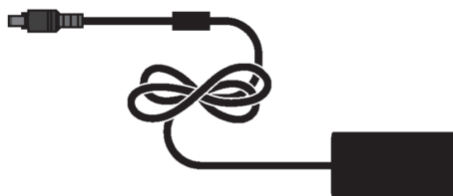
- Inclus
- Im Lieferumfangs Se incluye
- Inclusief
- Incluído

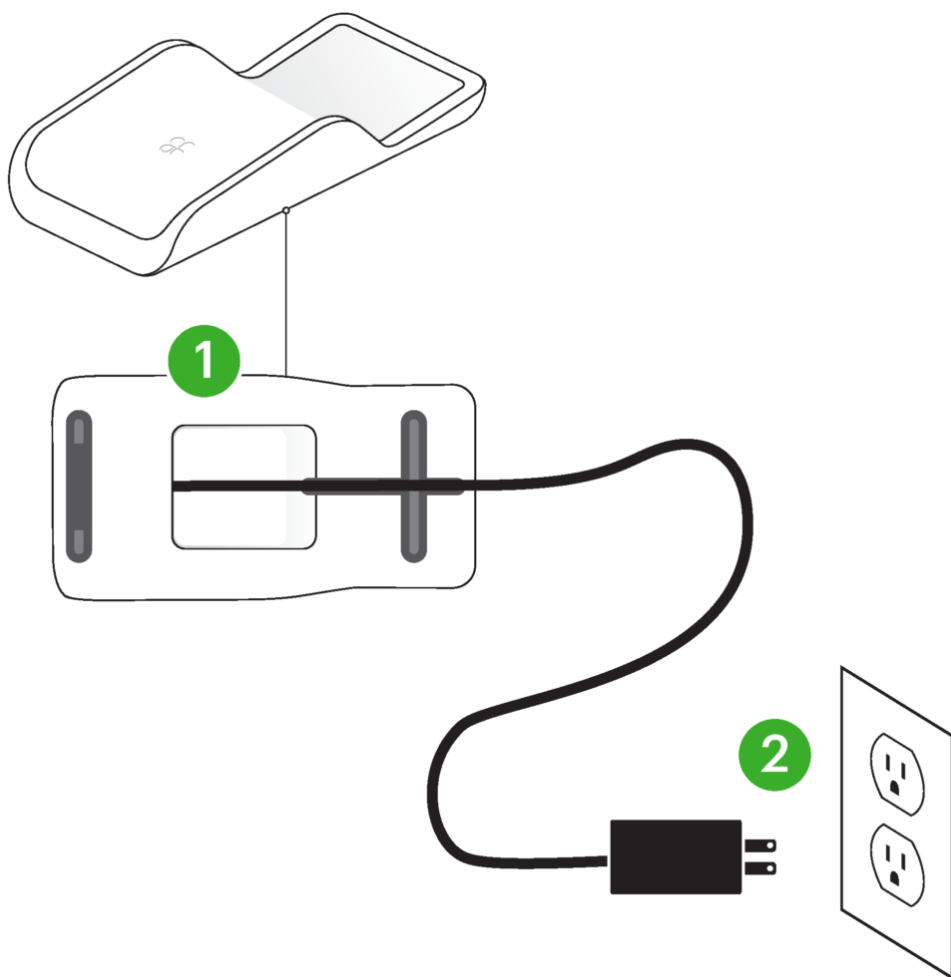


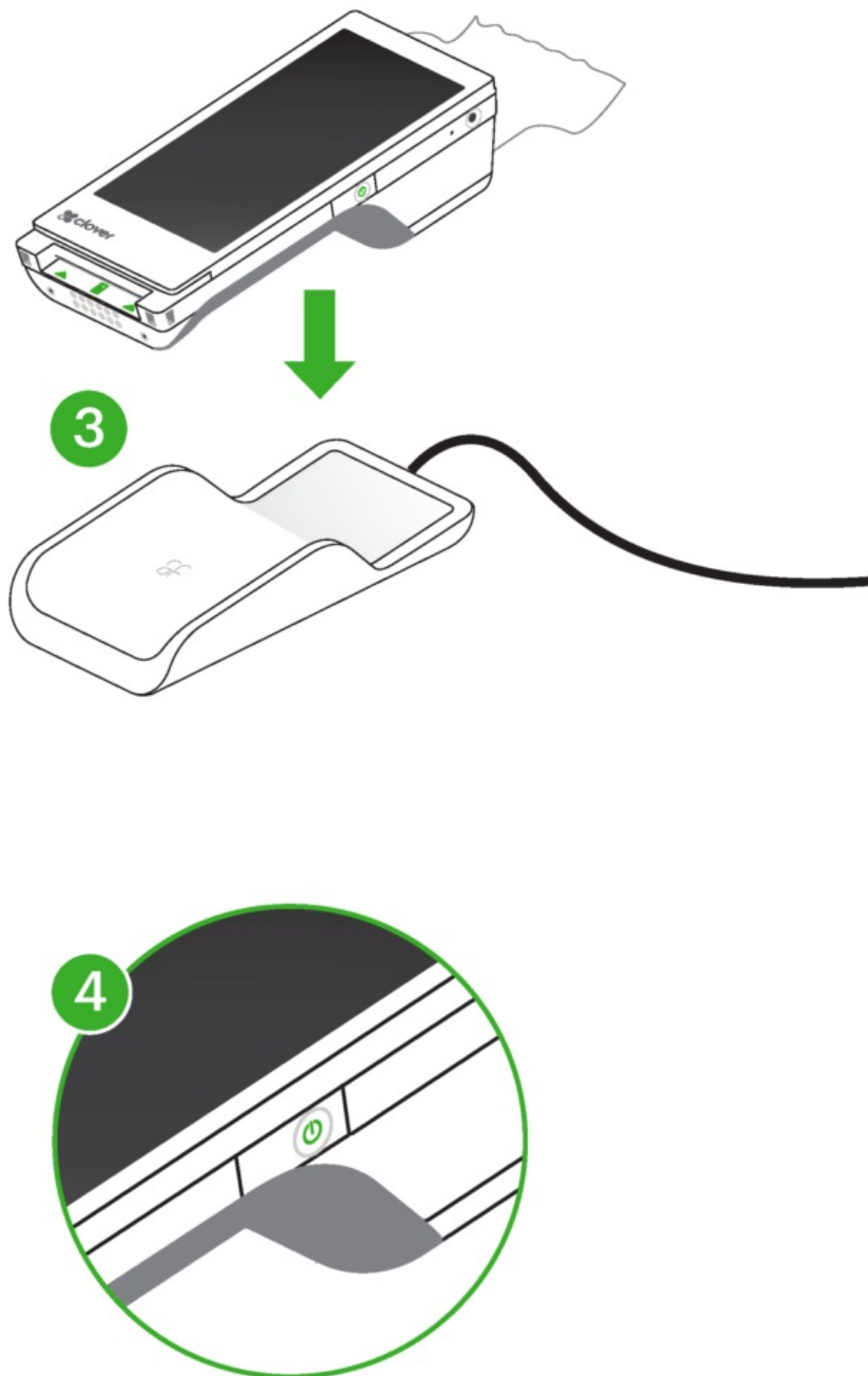
### Select regions



40 mm  
1.5 in







Observe the following safety precautions. Failure to do so may result in equipment failure, damage, or heat-induced burns.

1. Store in a dry location and clean with a dry cloth.
2. Do not disassemble or modify the device.
3. While charging, do not put any metallic object between the charging area on the cradle and the Clover Flex.
4. Do not charge any device other than the Clover Flex. The charging cradle is designed only for the Clover Flex.

## FCC Part 15

This device complies with Part 15 of the FCC Rules. Operation is subject to the following two conditions: (1) This device may not cause harmful interference, (2) This device must accept any interference received, including

interference that may cause undesired operation.

## **FCC Part 15 Class B-specific**

Note: This equipment has been tested and found to comply with the limits for a Class B digital device, pursuant to part 15 of the FCC Rules. These limits are designed to provide reasonable protection against harmful interference in a residential installation. This equipment generates, uses and can radiate radio frequency energy and, if not installed and used in accordance with the instructions, may cause harmful interference to radio communications. However, there is no guarantee that interference will not occur in a particular installation. If this equipment does cause harmful interference to radio or television reception, which can be determined by turning the equipment off and on, the user is encouraged to try to correct the interference by one or more of the following measures:

- Reorient or relocate the receiving antenna.
- Increase the separation between the equipment and receiver.
- Connect the equipment into an outlet on a circuit different from that to which the receiver is connected.
- Consult the dealer or an experienced radio/TV technician for help.

## **FCC Warning**

Changes or modifications not expressly approved by the party responsible for compliance could void the user's authority to operate the equipment.

## **FCC Radiation Exposure Statement**

This device must not be co-located or operating in conjunction with any other antenna or transmitter. This device has been tested and meets FCC RF exposure guidelines. Use with an accessory that contains metal may not ensure compliance with FCC RF exposure guidelines.

## **Innovation, Science and Economic Development**

Canada (ISED) statement: CAN ICES-3 (B)/NMB-3(B)

This device complies with ISED's licence-exempt RSSs. Operation is subject to the following two conditions:

- (i) This device may not cause harmful interference, and
- (ii) This device must accept any interference received, including interference that may cause undesired operation.

Le présent appareil est conforme aux CNR d'ISED applicables aux appareils radio exempts de licence. L'exploitation est autorisée aux deux conditions suivantes:

- (i) le dispositif ne doit pas produire de brouillage préjudiciable, et
- (ii) ce dispositif doit accepter tout brouillage reçu, y compris un brouillage susceptible de provoquer un fonctionnement indésirable.

## **Caution**

- (i) The device for operation in the band 5150-5250 MHz is only for indoor use to reduce the potential for harmful interference to co-channel mobile satellite systems;
- (ii) Where applicable, antenna type(s), antenna models(s), and worst-case tilt angle(s) necessary to remain compliant with the e.i.r.p. elevation mask requirement set forth in section 6.2.2.3 shall be clearly indicated.

## **EU Declaration of Conformity**

Hereby, Clover Network, LLC declares that the radio equipment type, C406/K405 is in compliance with Directive 2014/53/EU. The full text of the EU declaration of conformity is available at the following internet address:  
[eu.clover.com/eu-compliance](http://eu.clover.com/eu-compliance)

**The frequency band and the maximum transmitted power in EU are listed below:**

#### **WWAN**

LTE Band1: 23 dBm (Conducted)  
LTE Band3: 23 dBm (Conducted)  
LTE Band5: 23 dBm (Conducted)  
LTE Band7: 23 dBm (Conducted)  
LTE Band8: 23 dBm (Conducted)  
LTE Band20: 23 dBm (Conducted)  
LTE Band28: 23 dBm (Conducted)  
LTE Band40: 23 dBm (Conducted)

#### **CE max SAR**

Body: 1.599W/Kg  
Limb: 3.103W/Kg

#### **NFC**

-1.94dBuA/m @10m

#### **Wireless Charger**

100~200KHz:  
81.5 dBμV/m @10m

#### **Restrictions in**

AT/BE/BG/CZ/DK/EE/FR/DE/IS/IE/IT/EL/ES/CY/LV/LI/LT/LU/HU/MT/NL/NO/PL/PT/RO/SI/SK/TR/FI/SE/CH/UK(NI)/HR/UK. 5150MHz-5350MHz is for indoor use only.

#### **Caution: Exposure to Radio Frequency Radiation**

This product complies with EU requirements regarding restriction of exposure of persons to radio-frequency energy (RF) emitted by telecommunication and radio devices as it is designed and manufactured in such a way as not to exceed the exposure limits indicated by the European Union Commission. The permitted SAR limit for the general population is 2.0 W/Kg for body and 4.0 W/Kg for limb. This limit guarantees an ample safety margin that protects all persons regardless of age and health condition. SAR is measured with the device at 5mm to the body and at 0mm to the extremity, while transmitting at the highest certified output power level in all frequency bands of the device. The highest SAR level recorded for this model was equal to body 1.599W/Kg & limb 3.103W/Kg.

#### **CE RF Exposure Compliance**

This device meets the EU requirements (1999/519/EC) and the International Commission on Non-Ionizing Radiation Protection (ICNIRP) on the limitation of exposure of the general public to electromagnetic fields by way of health protection.

This device is restricted to indoor use only when operating in the 5150 to 5350 MHz frequency range.

#### **Clover Flex 4**

Model Number: C406

Patent

[clover.com/patents](https://clover.com/patents)

Clover Network, LLC

415 N Mathilda Ave Sunnyvale, CA 94085, USA

Importador para México:

### **Clover Flex Wireless Cradle**

Model Number: K405

EU Importer:

Marketplace Merchant Solutions Ltd Unit 9, Richview Office Park Clonskeagh, Dublin 14, Ireland

Base cargadora inalámbrica

First Data Merchant Services Mexico, S de RL de CV, Av Paseo de la Reforma, 509, Col. Cuauhtémoc Alcaldía Cuauhtémoc, Ciudad de Mexico 06500 Mexico +52 55 1102 0660



### **Waste Electrical and Electronic Equipment-WEEE**

NOTE: This product is covered electronic equipment under the European Union's Waste from Electrical and Electronic Equipment ("WEEE") Directive (2012/19/EU). The WEEE Directive requires that covered equipment be collected and managed separately from typical household waste in all EU member states. Please follow the guidance of your local environmental authority or ask the shop where you purchased the product for collection or recycling options.





## Specifications:

- Product Name: Clover Flex
- Dimensions: 40 mm x 1.5 in
- Regions: Select regions
- Output: 12.0 Vcc 2.0 A

## Product Usage Instructions:

### Safety Precautions:

Observe the following safety precautions to avoid equipment failure, damage, or heat-induced burns:

1. Store the device in a dry location and clean it with a dry cloth.
2. Avoid disassembling or modifying the device.
3. During charging, do not place any metallic object between the charging area on the cradle and the Clover Flex.
4. Only charge the Clover Flex using the provided charging cradle designed for it.

### Product Care Instructions:

Mantenha em local seco e limpe com um pano seco.

### Regulatory Compliance:

This device complies with FCC Part 15 regulations and FCC Part 15 Class B-specific requirements. It also meets Innovation, Science and Economic Development Canada (ISED) standards.

### EU Declaration of Conformity:

The Clover Flex radio equipment type C406/K405 is in compliance with Directive 2014/53/EU. For the full text of the EU declaration of conformity, visit [eu.clover.com/eu-compliance](http://eu.clover.com/eu-compliance).

---

## FAQ:



### Q: Can I use accessories containing metal with the Clover Flex?

A: It is recommended to use accessories that do not contain metal to ensure compliance with RF exposure guidelines.





### Q: What should I do if I encounter interference issues with the device?

A: Ensure that the device is not co-located or operating with any other antenna or transmitter to minimize interference. Follow the provided regulatory guidelines for proper operation.

## Documents / Resources

<div> Flex <small>Quick Start Guide Kurzanleitung / Instructions de démarrage Guia de início rápido / Schnellstartguide Guia de inicio rápido</small> <a href="https://clover.com/help">clover.com/help</a> </div>	<div><a href="#">clover Flex Handheld POS System</a> [pdf] User Guide Flex, Flex Handheld POS System, Handheld POS System, POS System, System</div>
--	---

References

-  [Clover Help](#)
-  [POS System & Credit Card Readers | Clover](#)
-  [Clover](#)
-  [Anatel — Agência Nacional de Telecomunicações](#)
- [User Manual](#)

Manuals+, Privacy Policy

This website is an independent publication and is neither affiliated with nor endorsed by any of the trademark owners. The "Bluetooth®" word mark and logos are registered trademarks owned by Bluetooth SIG, Inc. The "Wi-Fi®" word mark and logos are registered trademarks owned by the Wi-Fi Alliance. Any use of these marks on this website does not imply any affiliation with or endorsement.