



clover C801
Countertop
Payment
Terminal



clover C801 Countertop Payment Terminal User Guide

[Home](#) » [clover](#) » clover C801 Countertop Payment Terminal User Guide 

Contents

- [1 clover C801 Countertop Payment Terminal](#)
- [2 Product Information](#)
- [3 Product Usage Instructions](#)
- [4 Included](#)
- [5 Install printer roll](#)
- [6 FCC Warning](#)
- [7 Documents / Resources](#)
 - [7.1 References](#)
- [8 Related Posts](#)



clover C801 Countertop Payment Terminal



Specifications

- **Model Number:** C801
- **Dimensions:** 40 mm (1.5 in)
- **Mounting Option:** Metric thread M6 x 1, Depth: 8mm (5/16 in)

Product Information

The Clover Compact printer is a compact device designed for easy installation and usage. It complies with FCC Part 15 regulations and features LTE connectivity for seamless operation.

Product Usage Instructions

Installing Printer Roll

1. Open the printer compartment.
2. Insert the printer roll as per the direction indicated inside the compartment.
3. Close the compartment securely.

Optional: Installing PIN Shield

1. Align the PIN shield with the designated slots on the device.
2. Securely attach the shield in place.

Powering On

1. Ensure the device is plugged into a grounded AC power outlet.
2. Press the power button to turn on the device.

FCC Compliance

The device complies with FCC regulations regarding harmful interference and exposure limits. Indoor usage is recommended for operations in the 5.15-5.25GHz band.

WEEE Directive

This product is covered under the WEEE Directive, requiring proper collection and management for electronic waste. Please follow local guidelines for disposal or recycling options.

FAQ

Q: What should I do if the device does not power on?

A: Check the power connection and ensure the device is plugged into a functioning outlet. If the issue persists, contact customer support for assistance.

Compact

Quick Start Guide

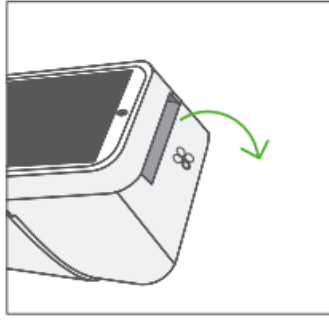
clover.com/help

Included

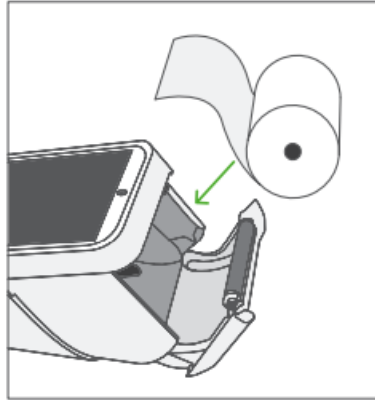


Install printer roll

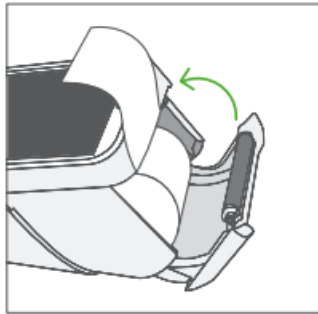
1



2

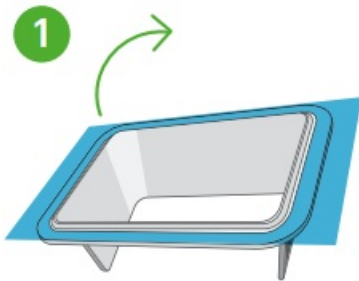


3



Optional: Install PIN shield

1

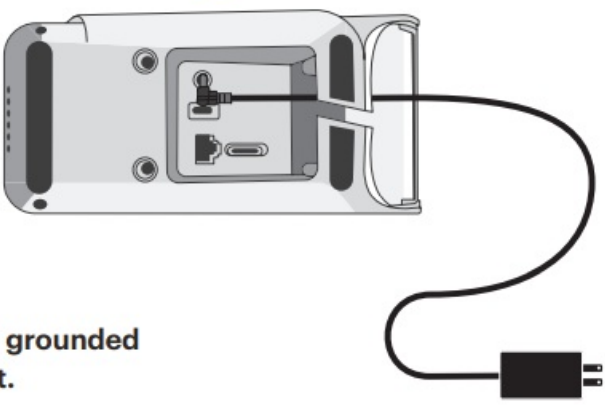


2



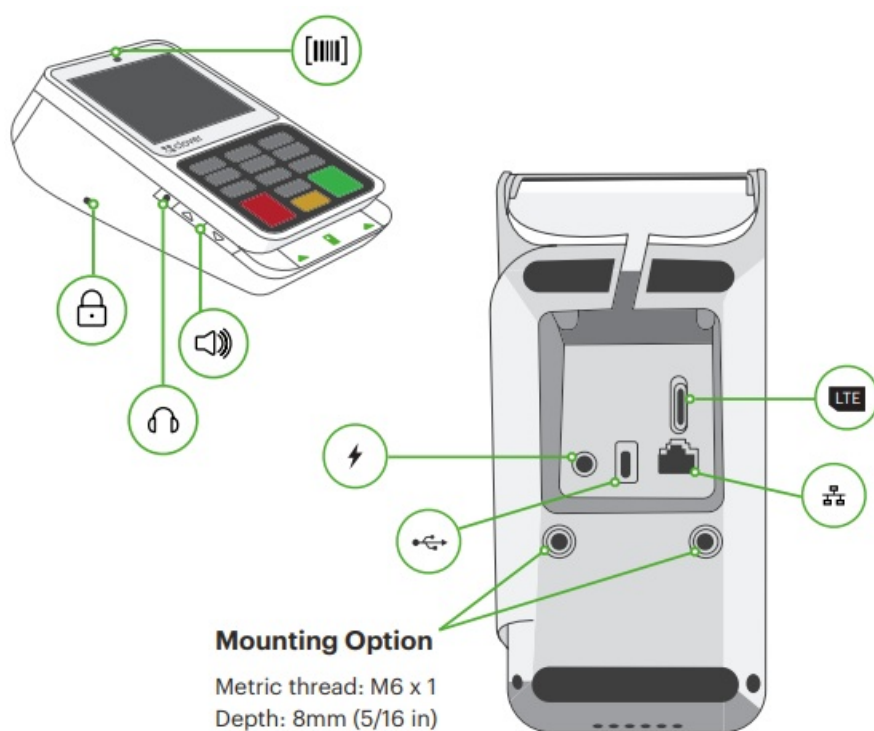
Power on

1

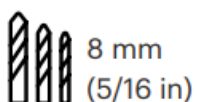
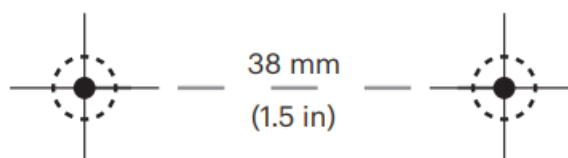


Plug in last, to a grounded
AC power outlet.

2



Drilling Template



FCC Part 15

This device complies with Part 15 of the FCC Rules. Operation is subject to the following two conditions:

1. This device may not cause harmful interference,
2. This device must accept any interference received, including interference that may cause undesired operation.

FCC Part 15 Class B-specific

Note: This equipment has been tested and found to comply with the limits for a Class B digital device, pursuant to part 15 of the FCC Rules. These limits are designed to provide reasonable protection against harmful interference in a residential installation. This equipment generates, uses and can radiate radio frequency energy and, if not installed and used in accordance with the instructions, may cause harmful interference to radio communications. However, there is no guarantee that interference will not occur in a particular installation. If this equipment does cause harmful interference to radio or television reception, which can be determined by turning the equipment off and on, the user is encouraged to try to correct the interference by one or more of the following measures:

- Reorient or relocate the receiving antenna.
- Increase the separation between the equipment and receiver.
- Connect the equipment into an outlet on a circuit different from that to which the receiver is connected.
- Consult the dealer or an experienced radio/TV technician for help.

FCC Warning

Changes or modifications not expressly approved by the party responsible for compliance could void the user's authority to operate the equipment. Operations in the 5.15-5.25GHz band are restricted to indoor usage only.

FCC exposure limit compliance statement

This equipment complies with radio frequency (RF) exposure limits adopted by the Federal Communications Commission for an uncontrolled environment. This equipment should be installed and operated with minimum distance 20 cm between the radiator & your body.

Clover Compact

Model Number: C801

Patent

clover.com/patents

Clover Network, LLC


415 N Mathilda Ave Sunnyvale, CA 94085, USA



Waste Electrical and Electronic Equipment-WEEE

NOTE: This product is covered electronic equipment under the European Union's Waste from Electrical and Electronic Equipment ("WEEE") Directive (2012/19/EU). The WEEE Directive requires that covered equipment be collected and managed separately from typical household waste in all EU member states. Please follow the guidance of your local environmental authority or ask the shop where you purchased the product for collection or recycling options.

Documents / Resources

	<p>clover C801 Countertop Payment Terminal [pdf] User Guide</p> <p>C801, C801 Countertop Payment Terminal, Countertop Payment Terminal, Payment Terminal, Terminal</p>
---	--

References

-  [Clover Help](#)
-  [POS System & Credit Card Readers | Clover](#)
- [User Manual](#)

[Manuals+](#), [Privacy Policy](#)

This website is an independent publication and is neither affiliated with nor endorsed by any of the trademark owners. The "Bluetooth®" word mark and logos are registered trademarks owned by Bluetooth SIG, Inc. The "Wi-Fi®" word mark and logos are registered trademarks owned by the Wi-Fi Alliance. Any use of these marks on this website does not imply any affiliation with or endorsement.