



Cloudy Bay LCSL640SMXX RGBCW Color Changing Smart Light Installation Guide

[Home](#) » [Cloudy Bay](#) » Cloudy Bay LCSL640SMXX RGBCW Color Changing Smart Light Installation Guide 

Contents

- [1 Cloudy Bay LCSL640SMXX RGBCW Color Changing Smart Light](#)
- [2 Product Information](#)
- [3 Product Usage Instructions](#)
- [4 BEFORE INSTALLING FIXTURE](#)
- [5 FCC Statement](#)
- [6 Amazon Alexa](#)
- [7 Tips](#)
- [8 Google Home](#)
- [9 FAQ](#)
- [10 Support](#)
- [11 FAQ](#)
- [12 3-Year Limited Warranty](#)
- [13 Documents / Resources](#)
- [14 Related Posts](#)



Cloudy Bay LCSL640SMXX RGBCW Color Changing Smart Light



Product Information

- **Product Name:** Cloudy Bay RGBCW Color Changing Smart Light
- **User Manual:** Included

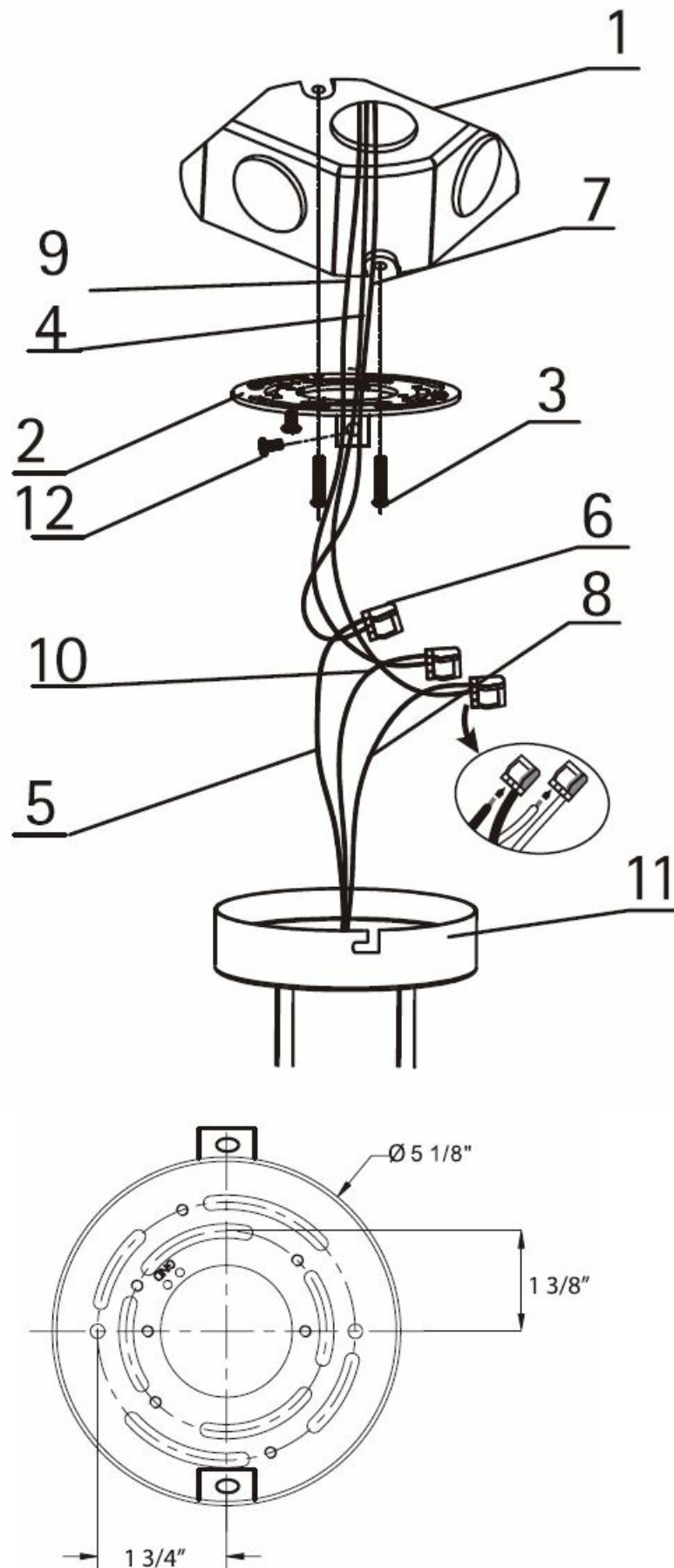
Product Usage Instructions

1. Make sure you have the user manual for detailed instructions.
2. Connect the Cloudy Bay RGBCW Color Changing Smart Light to a power source.
3. Download the associated app on your smartphone or tablet.
4. Open the app and create an account using your email address.
5. Follow the instructions in the app to connect the smart light to your Wi-Fi network.
6. To group lights together, navigate to the “Group Lights” section in the app.
7. Follow the prompts in the app to create and manage light groups.
8. Refer to the user manual or contact customer support for any additional assistance.

BEFORE INSTALLING FIXTURE

PLEASE READ CAREFULLY BEFORE INSTALLING FIXTURE

Save these instructions, as you may need them at a later date.



1. OUTLET BOX (NOT INCLUDED)
2. MOUNTING BRACKET
3. MOUNTING SCREWS
4. SUPPLY GROUND WIRE

5. FIXTURE GROUND WIRE
6. QUICK CONNECTORS
7. BLACK SUPPLY WIRE
8. BLACK FIXTURE WIRE
9. WHITE SUPPLY WIRE
10. WHITE FIXTURE WIRE
11. FIXTURE BASE
12. FIXTURE SCREW

Please follow these steps for installation.

1. SHUT OFF MAIN ELECTRICAL SUPPLY FROM THE MAIN FUSE BOX/CIRCUIT BREAKER!
2. Remove contents from box. Ensure that no parts are missing. Reference the illustration included with this instruction manual.
3. Attach the MOUNTING SCREWS(3) to the MOUNTING BRACKET(2).
4. Locate BLACK AND WHITE SUPPLY WIRES(7&9) and the SUPPLY GROUND WIRE(4), and remove them from the OUTLET BOX(1).
5. Use MOUNTING SCREWS(3) to mount MOUNTING BRACKET(2) to the OUTLET BOX (1).
6. Make the following wire connections (Fig. 1), using the provided QUICK CONNECTORS(8): WHITE (-) SUPPLY WIRE (9) TO WHITE FIXTURE WIRE (10) BLACK (+) SUPPLY WIRE (7) TO BLACK FIXTURE WIRE (8) SUPPLY GROUND WIRE (4) TO FIXTURE GROUND WIRE (5)
7. Raise FIXTURE BASE(11) and adjust its position until FIXTURE SCREW(12) locate in the edge of L hole, then use FIXTURE SCREW(12) to tighten FIXTURE BASE(11) and MOUNTING BRACKET(2) securely.
8. Restore power at fuse box/circuit breaker. Check the operation of the Integrated LED Fixture.
9. Refer to User Manual and Voice control guidelines to set up products accordingly.

A If you only have a dimmer at hand, set it to the highest level only. If the light performance is not good, we strongly advise you to change it to a regular switch.

FCC Statement

This equipment has been tested and found to comply with the limits for a Class B digital device, pursuant to part 15 of the FCC Rules. These limits are designed to provide reasonable protection against harmful interference in a residential installation. This equipment generates, uses and can radiate radio frequency energy and, if not installed and used in accordance with the instructions, may cause harmful interference to radio communications. However, there is no guarantee that interference will not occur in a particular installation. If this equipment does cause harmful interference to radio or television reception, which can be determined by turning the equipment off and on, the user is encouraged to try to correct the interference by one or more of the following measures:

- Reorient or relocate the receiving antenna.
- Increase the separation between the equipment and the receiver.
- Connect the equipment into an outlet on a circuit different from that to which the receiver is connected.
- Consult the dealer or an experienced radio/TV technician for help.

Caution: Any changes or modifications to this device not explicitly approved by the manufacturer could void your authority to operate this equipment.

This device complies with part 15 of the FCC Rules. Operation is subject to the following two conditions:

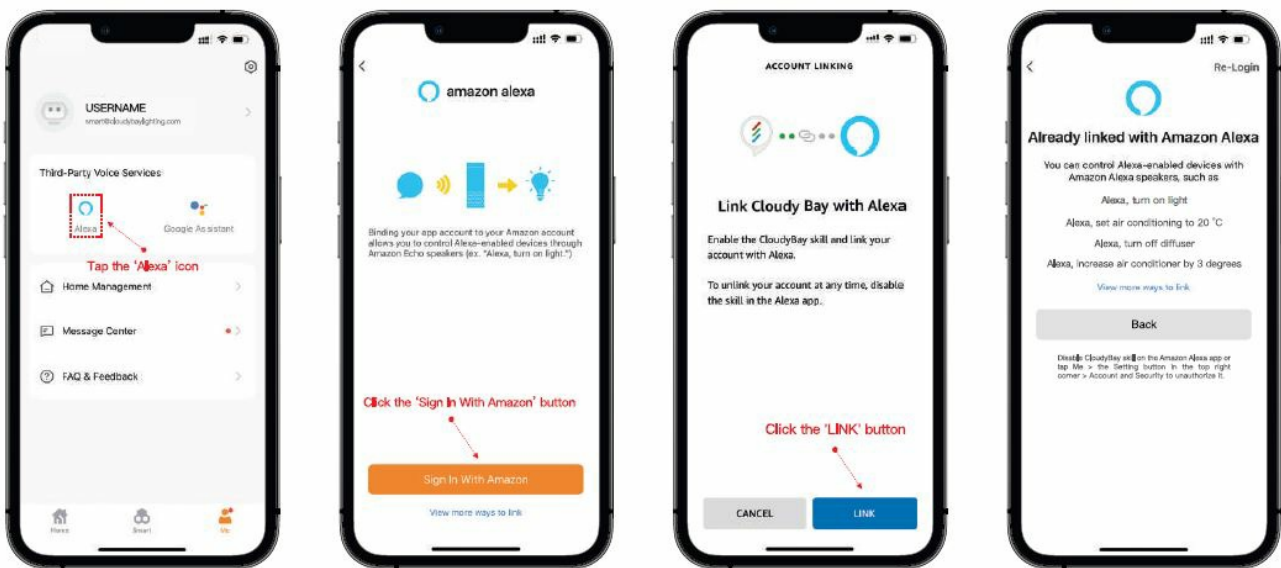
1. This device may not cause harmful interference, and
2. this device must accept any interference received, including interference that may cause undesired operation.

RF Exposure Information

This equipment complies with FCC radiation exposure limits set forth for an uncontrolled environment. This equipment should be installed and operated with a minimum distance of 20cm between the radiator and your body.

Amazon Alexa

Link Cloudy Bay with Amazon Alexa



STEP1: Open the Cloudy Bay App, click 'Me' Tab, then tap the 'Alexa' icon.

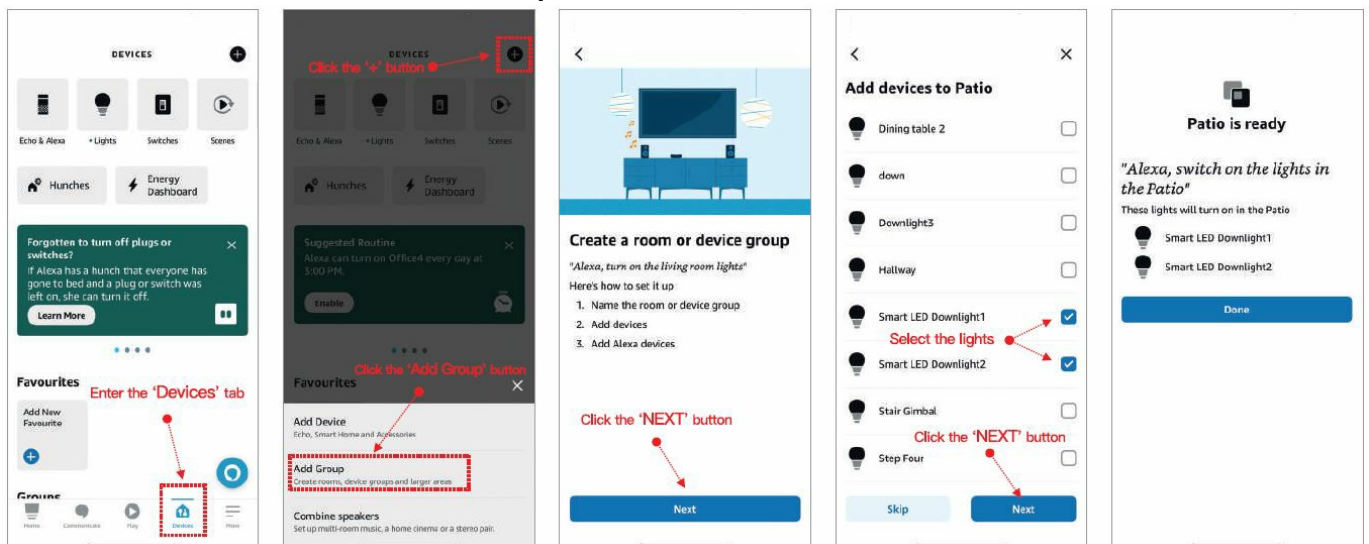
STEP2: Click 'Sign In With Amazon' button.

STEP3: Alexa APP will be called out, just Click the 'LINK' button.

Finish

- Please make sure you have installed Alexa APP on your mobile device.
- Amazon, Alexa and all related logos are trademarks of [Amazon.com](https://www.amazon.com), Inc. or its affiliates.

Create Amazon Alexa Voice Control Group



Open the Amazon Alexa APP, and follow the steps below.

1. Click the Devices Tab.
2. Click the '+' icon on the top right corner, and select Add Group.
3. Select Create a room or device group.
4. Use the preset group names, or create your own, and then select Next.
5. Select the lights you want to include, and then click Next.
 - Based on the Amazon Alexa APP v2.2.465557.
 - **For more information, please refer to:** <https://www.amazon.com/gp/help/customer/display.html?nodeId=GS8URL9UPW8SPTA>.
 - Amazon, Alexa, and all related logos are trademarks of [Amazon.com](https://www.amazon.com), Inc. or its affiliates.

Tips

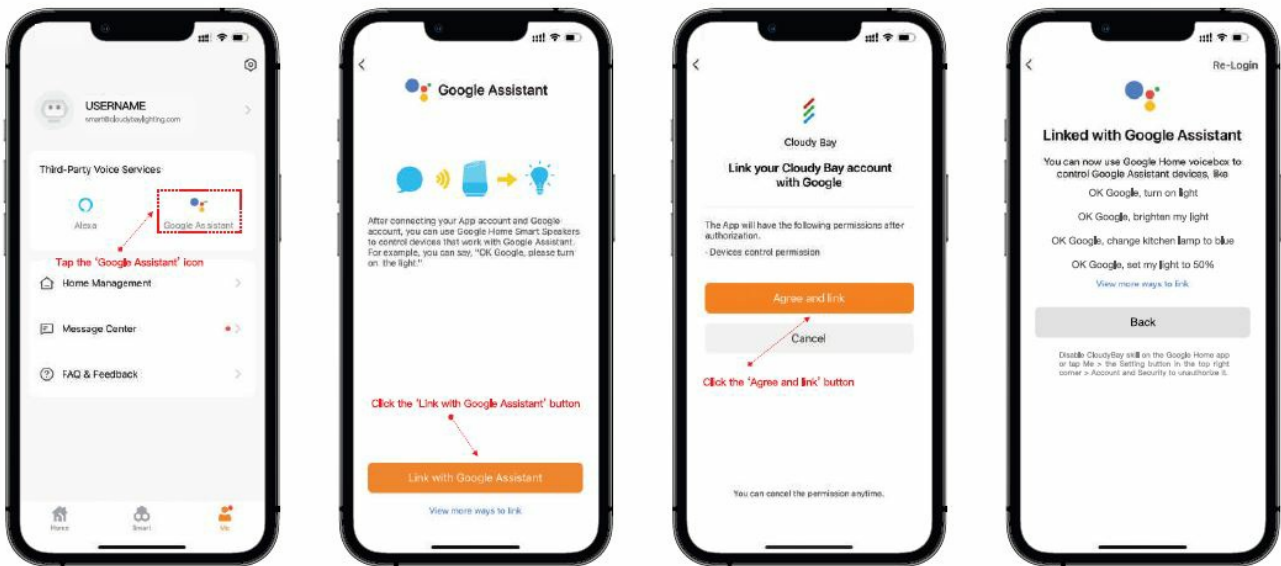
- **Device name**
 - If you want to rename a Cloudy Bay device, we suggest that you rename it in the Cloudy Bay APP.
 - It will be synced to the Amazon Alexa APP.
- **Scenes**
 - The smart actions or scenes in the Cloudy Bay APP will be synced to the Amazon Alexa APP. Sure, you can disable them at any time.
- **Unlink to Cloudy Bay**
 - At any time, you can unlink the Cloudy Bay skill in the Skills & Games section of the Amazon Alexa APP.


Basic voice commands


To do this:	Say "Alexa", then:
To turn a light on or off	"Turn on or off <light name>"
Dim a light	"dim/set <light name> by fifty percent"
Set Color temperature	"set <light name> to cool white" "set <light name> to warm white" "make <light name> white"
Change the color of a light	"set the front porch light to blue. " "set the bedroom light to red. " "change the kitchen to the color blue."


Google Home

Link Cloudy Bay with Google Home



 STEP1: Open the CloudyBay App, click 'Me' Tab, then tap the 'Google Assistant' icon.

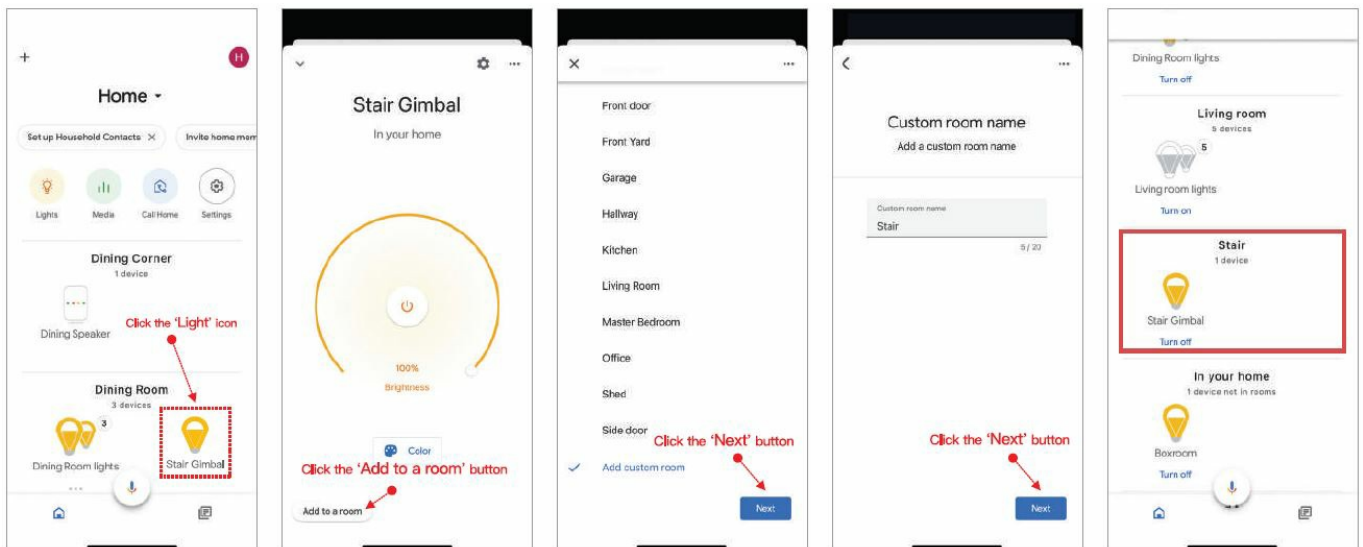
 STEP2: Click 'Link with Google Assistant' button.

 STEP3: Google Home APP will be called out, just Click the 'Agree and link' button.

 Finish

- Please make sure you have installed the Google Home app on your mobile device.
- Google is a trademark of Google LLC.

Create Google Home Voice Control Group



Open the Google Home APP, and follow the steps below.

1. Click the light you want to include in a group.
2. Click Add to a room on the left bottom.
3. You can choose an exist group, or create new one.
4. Enter a name for the new group.
5. Tap Next.

Based on the Google Home APP v2.48.106.

For more information, please refer to: <https://support.google.com/googlenest#topic=7029097>. Google is a trademark of Google LLC.

- **Tips Device name**

If you want to rename a Cloudy Bay device, we suggest that you rename it in the CloudyBay APP. It will be synced to the Google Home APP.

- **Unlink to Cloudy Bay**

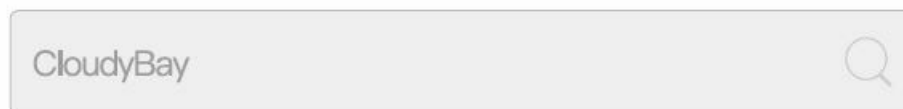
At any time, you can unlink your Cloudy Bay account in the Home Control section of the Google Home APP.

Basic voice commands

To do this:	Say "Ok Google" or "Hey Google," then:
To turn a light on or off	"Turn on or off <light name>"
Dim a light	"Dim the <light name>"
Brighten a light	"Brighten the <light name>"
Set a light brightness to a certain percentage	"Set <light name> to 50%"
Dim or brighten lights by a certain percentage	"Dim <light name> by 50%" "Brighten <light name> by 30%"
Change the color of a light	"Turn <light name> green"
Turn all lights in room on or off	"Turn on or off lights in <room name>"
Turn all lights on or off	"Turn on or off all of the lights"

1. GET READY

- Download the  Cloudy Bay 1 APP



- The APP requires iOS 10.0 / Android 5.0 or above
- Please make sure your mobile device is connected to the 2.4GHz Wi-Fi and mobile device Bluetooth is turned on.

2. REGISTRATION

Register

United States of America >

Email Address

Get Verification Code

- **Step 1:** Enter your Email Address to get the verification code.

Verify it's you

Verification Code

Resend

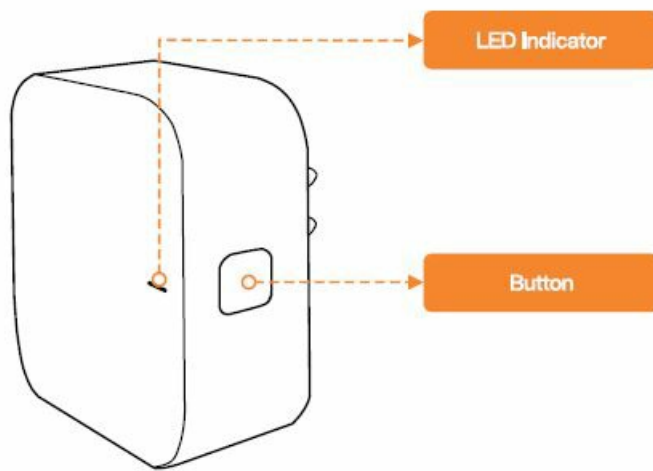
Please enter your password

Confirm

- **Step 2:** Enter the verification code and set your password.

3. SETUP HUB

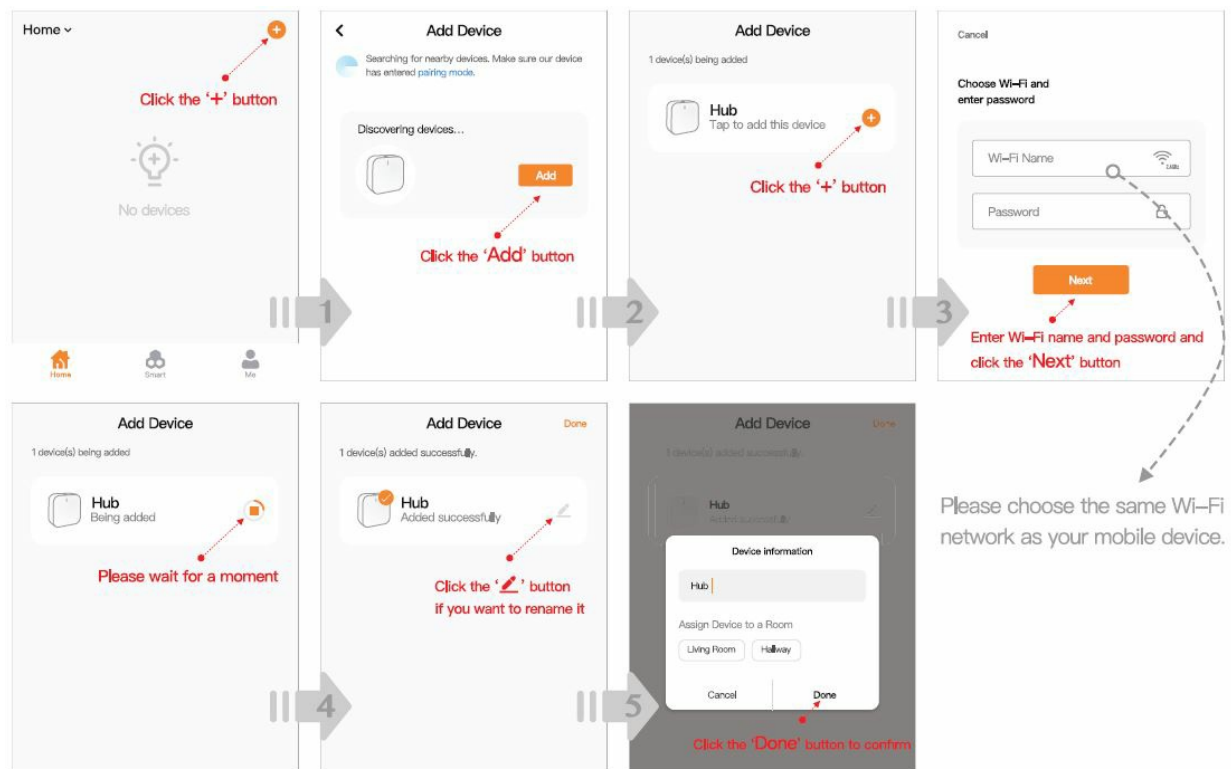
- You can connect Max.30 lights with one Hub ideally. If you have already installed the Cloudy Bay Hub, Please skip to Page 5 to add more lights.
- **Step 1:** Activate Pairing Mode Hold the Button for 5 seconds. Please confirm the indicator is blinking.



- **Note:** Please make sure your mobile device is connected to the 2.4GHz Wi-Fi and mobile device Bluetooth is turned on.

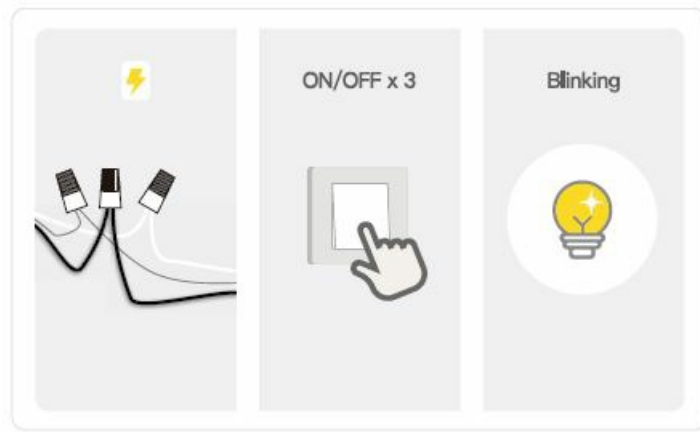
- **Step2:** Add the Hub

Launch the Cloudy Bay APP and follow the instructions below to add a hub.



4. SETUP LIGHTS

- **Step1:** Activate Pairing Mode
- Please make sure the lights are powered off for more than 10 seconds before adding.
- Then turn on/off 3 times (on-off-on-off-on), 2 to 4 seconds between each on and off.
- Waiting few seconds until the lights blinking rapidly.



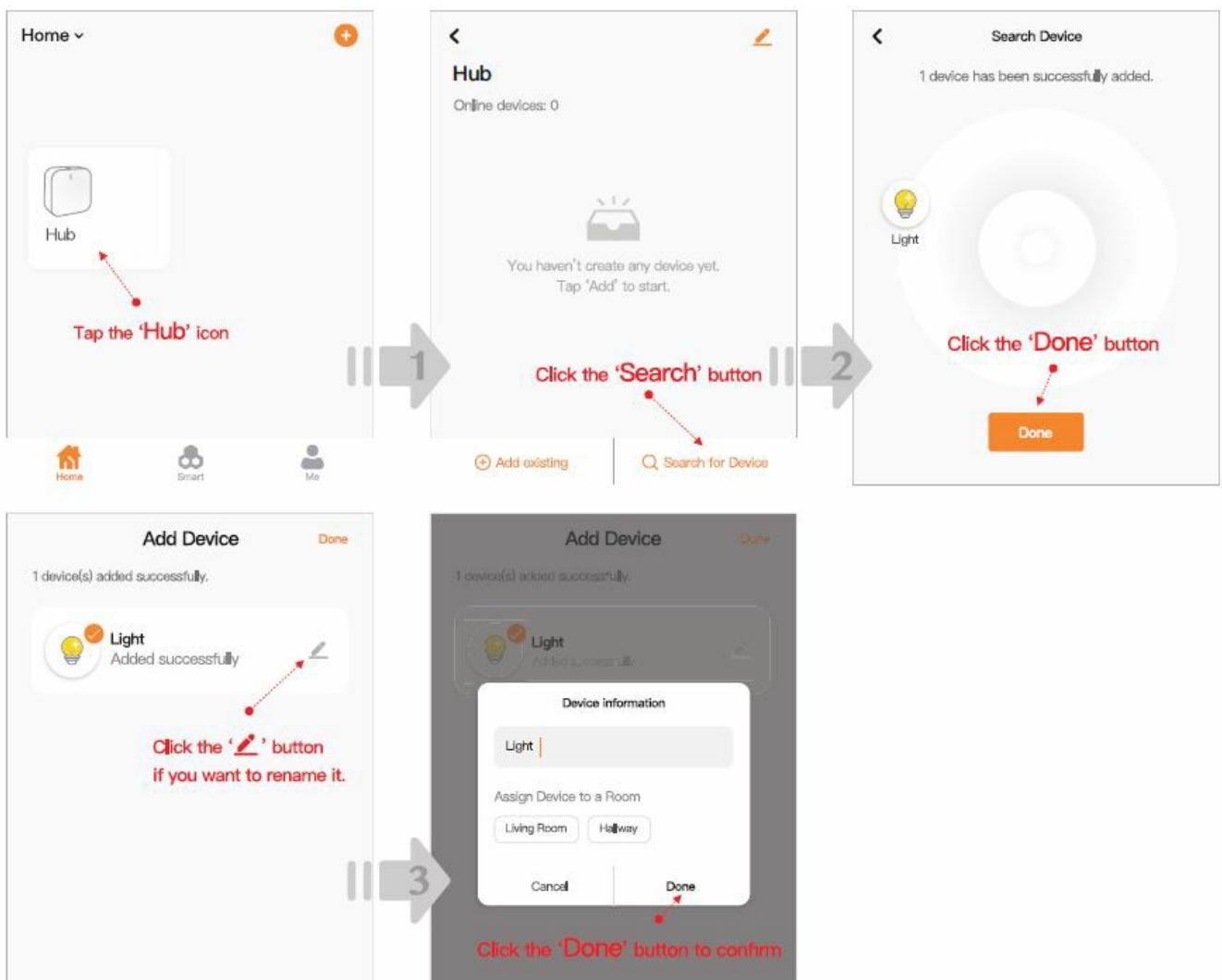
NOTICE

Considering the loading capacity of your house Router and WiFi signal problem.

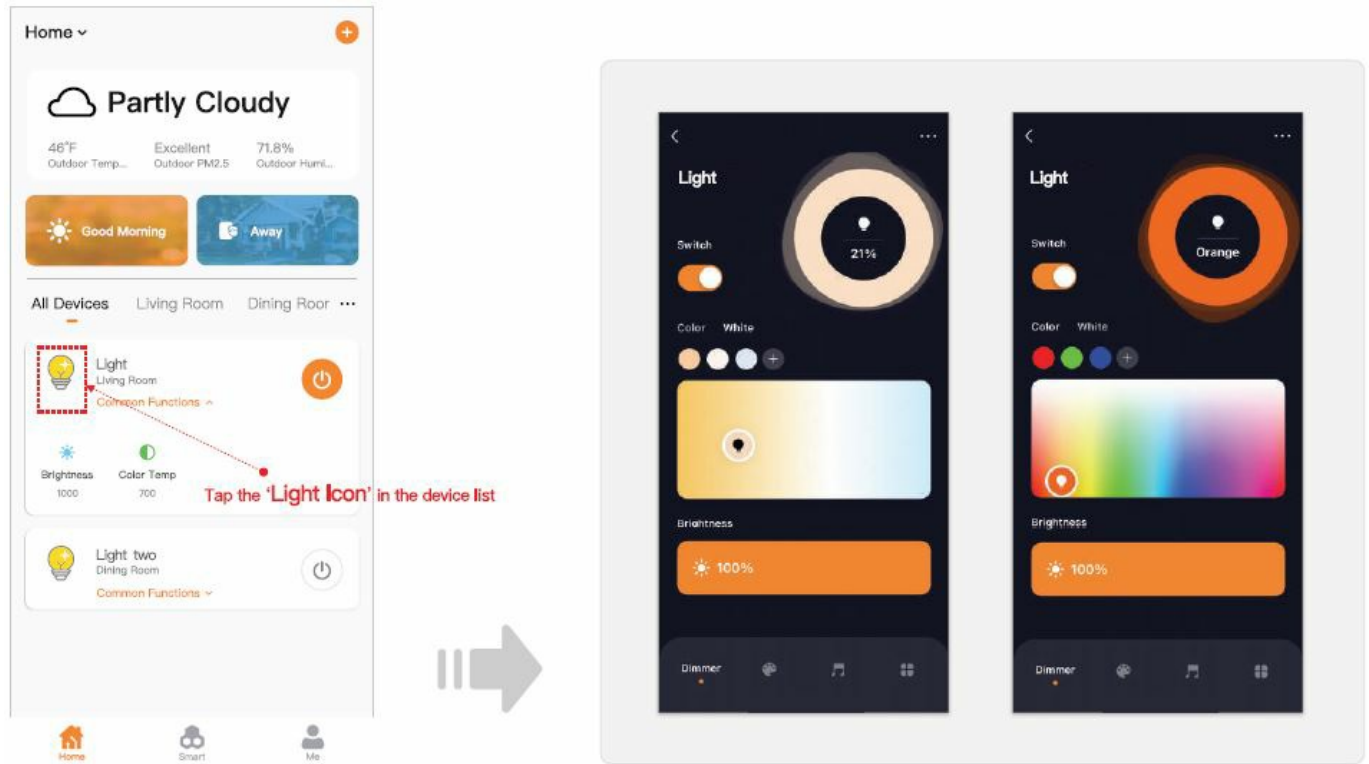
1. We don't suggest you add more than 6 lights at one time.
2. Some lights might fail to add to CloudyBay APP during this process. Don't worry, just try few more times with steps on Page 5 to 6 until all lights are added to ClodudyBay APP. Your patience is highly appreciated, Thank you !

• Step2: Add the lights

Tap the Hub icon in the Cloudy Bay APP and follow the instructions below to add the lights.



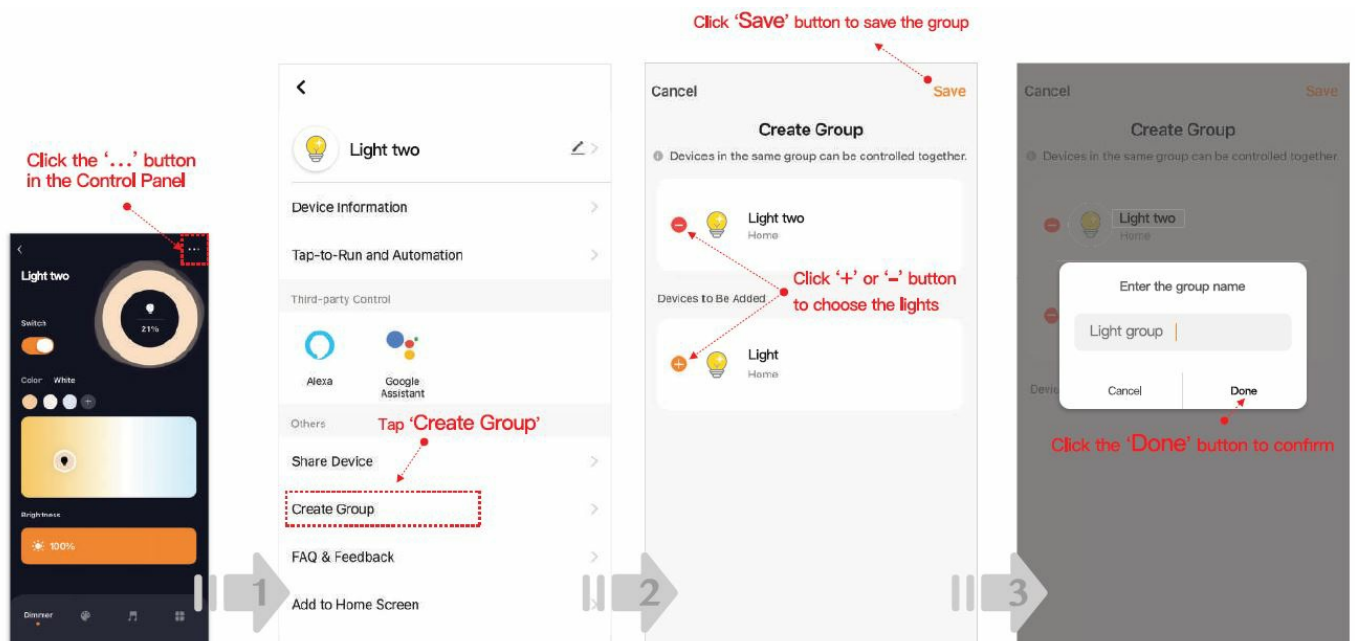
LIGHT CONTROL



Light Control Panel

If you want to fully control the light, you need to tap the light icon from the device list to enter the control panel.

GROUP LIGHTS



Group Control

You can create lighting groups for different rooms or spaces in the Cloudy Bay App, and they can be controlled not only as a group but also individually.

FAQ

1. Can I dim these lights with a physical dimmer?

No, these lights can only be dimmed by APP control or Voice control.

2. Why can't I activate the pairing mode?

Please make sure the interval between each on/off is 2 to 4 seconds and the light is on each time. Please power off the light for more than 10 seconds before restarting this process.

3. Can I use the 5GHz Wi-Fi to add the lights?

No, only support 2.4GHz Wi-Fi and please make sure step lights and your mobile device are connected to the same Wi-Fi network.

4. How to group lights in the Amazon Alexa or Google Home?

Please refer to the Voice Control Guide.

5. Why do the lights flash when I control them with a wall switch?

Turning on/off continuously by the wall switch may accidentally activate pairing mode. Just turn it off, wait 30 seconds, then turn it on, and it will be back to normal.

6. Can I remote control the lights via a mobile network?

Yes. Please make sure the lights are online, you can check the lights' status in the Cloudy Bay App.

7. How many lights can I connect?

We recommend assigning Max.30 lights to each hub.

8. Can I share the lights with my family?

Yes, you can. Your family needs to get the Cloudy Bay APP and sign in. Then you can share one or more lights with him/her to his/her account.

TIPS

• Warranty

The product carries a 3-year warranty from the purchase date. Please feel free to contact us if you have any product problems or suggestions. We take care of all quality-related issues with a REPLACEMENT or FULL REFUND.

• Data Security

Cloudy Bay smart products are based on the Tuya (NYSE: TUYA) IoT PaaS platform, and who's data center is set up in the United States.

• More Smart Products


Visit <https://cloudybaylighting.com/smart/>. to find more Cloudy Bay smart products.

Support

Visit <https://cloudybaylighting.com/smart/help>, or contact us by smart@cloudybaylighting.com to reach us for help.

GET READY

- Download the  Cloudy Bay 1 APP

CloudyBay 



- The APP requires iOS 10.0 / Android 5.0 or above
- Please make sure your mobile device is connected to the 2.4GHz Wi-Fi and mobile device Bluetooth is turned on.

REGISTRATION

1. **Step 1:** Enter your Email Address to get the verification code.

Register

United States of America >

Email Address

Get Verification Code

2. **Step2:** Enter the verification code and set your password.

Verify it's you

Resend

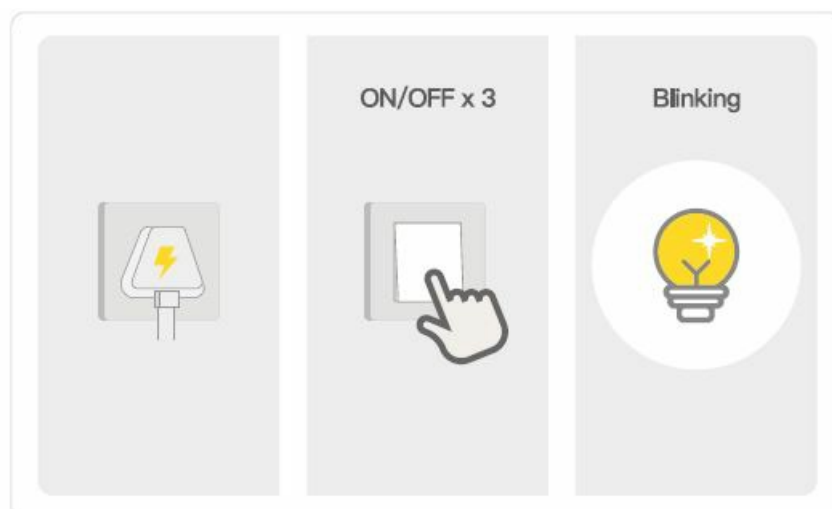
👁

Confirm

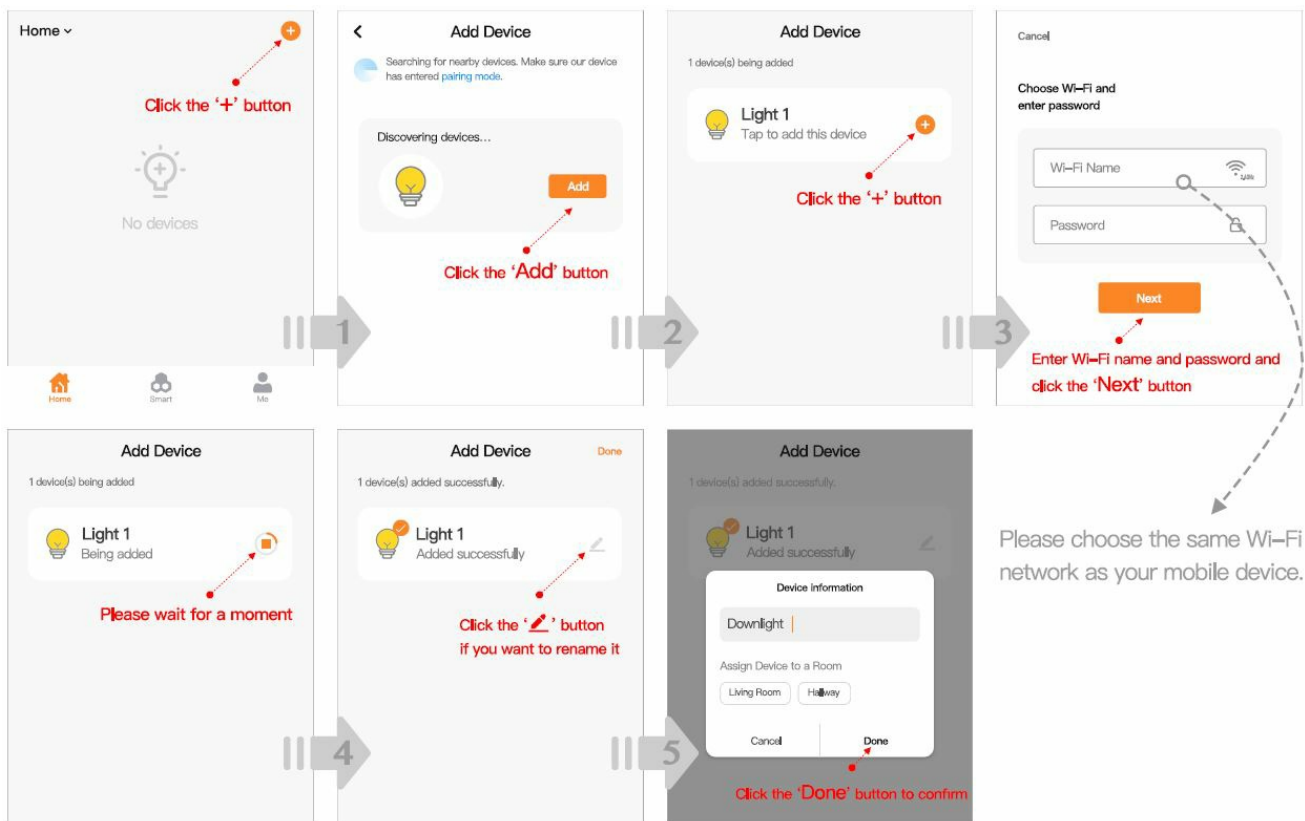
SET UP LIGHTS

ATTENTION: Considering the loading capacity of your house Router, we highly suggest you add no more than 6 lights at one time..

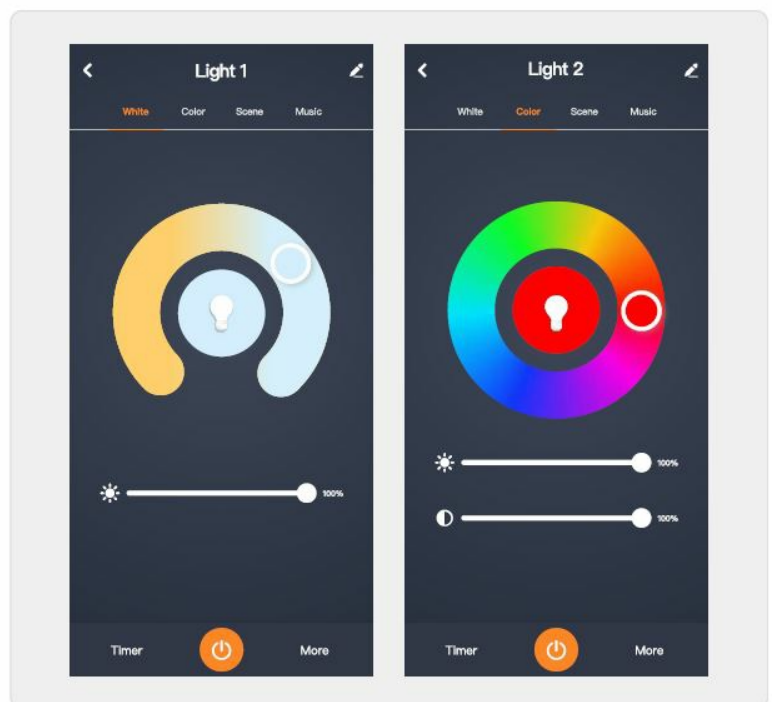
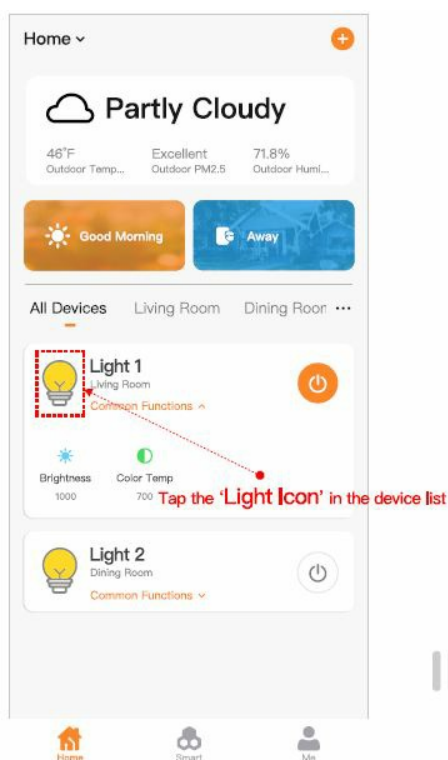
- **Step 1:** Activate Pairing Mode Please make sure the lights are powered off for more than 10 seconds before adding. Then turn on/off 3 times (on-off-on-off-on), 2 to 4 seconds between each on and off. Waiting a few seconds until the lights blink rapidly.



- **Note:** Please make sure your mobile device is connected to the 2.4GHz Wi-Fi and mobile device Bluetooth is turned on.
- **Step2:** Add the Lights Launch the Cloudy Bay APP and follow the instructions below to add the Lights.



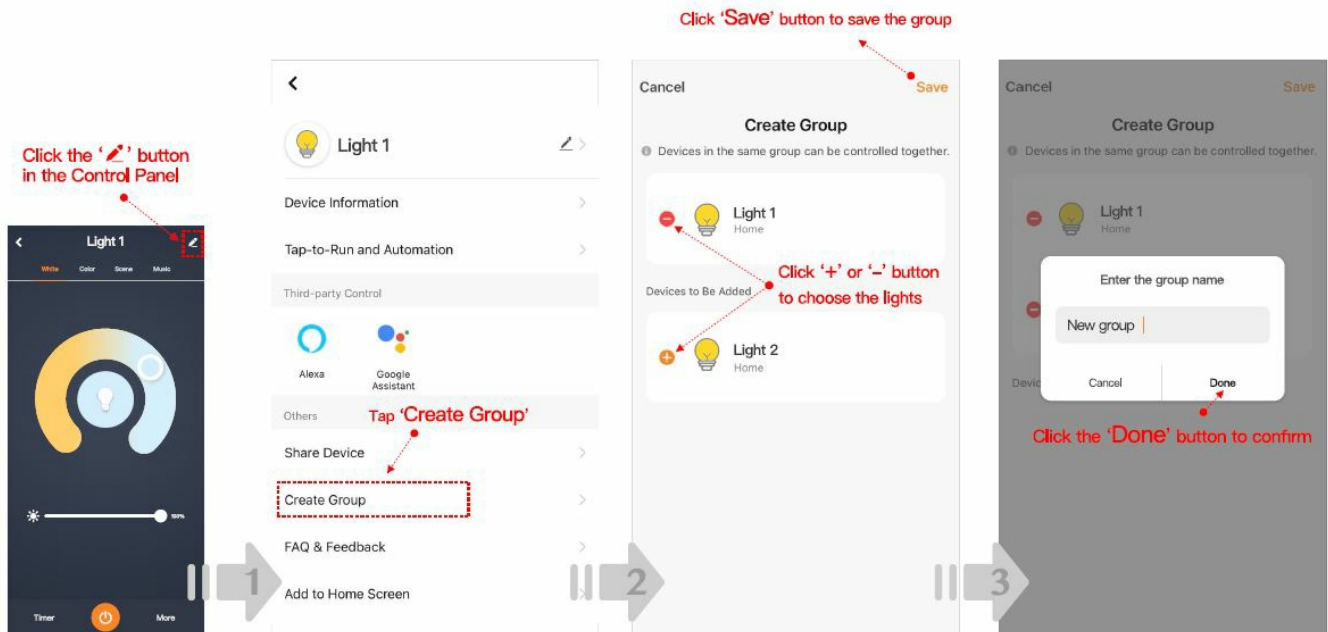
LIGHT CONTROL



Light Control Panel

If you want to fully control the light, you need to tap the light icon from the device list to enter the control panel.

GROUP LIGHTS



Group Control

You can create lighting groups for different rooms or spaces in the Cloudy Bay App, and they can be controlled not only as a group but also individually.

FAQ

- **Q1:** Can I dim these lights with a physical dimmer?
No, the light can only be dimmed by APP control or Voice control.
- **Q2:** Can I use the 5GHz Wi-Fi to add the lights?
No, only support 2.4GHz Wi-Fi and please make sure step lights and your mobile device are connected to the same Wi-Fi network.
- **Q3:** How to group lights in the Amazon Alexa or Google Home?
Please refer to the Voice Control Guide.
- **Q4:** Can I remote control the lights via a mobile network?
Yes. Please make sure the lights are online, you can check the light's status in the CloudyBay App.
- **Q5:** How many lights can I connect? It depends on the connection limitation of your router. CloudyBay APP doesn't limit the amount of connecting devices.
- **Q6:** Can I share the lights with my family?
Yes, you can. Your family needs to get the CloudyBay APP and sign in. Then you can share one or more lights with him/her to his/her account.
- **Q7:** If I lose the internet, can I control the device via an APP?
You can not control the device remotely if your internet goes down. If you are at home and your home router still works, you can control it if you enable Bluetooth, except for some functions via the cloud server.
- **Q8:** Do I need to keep the Switch On situation?
Yes, You need to turn on the switch all the time so that you can control it by APP or Voice Control.
- **Q9:** How does CloudyBay ensure data security?
CloudyBay smart products are based on the Tuya (NYSE: TUYA) IoT PaaS platform, and who's data center is set up in the United States.

TIPS Warranty

The product carries a 3-year warranty from the purchase date. Please feel free to contact us if you have any product problems or suggestions. We take care of all quality-related issues with a REPLACEMENT or FULL REFUND.

More Smart Products Visit <https://cloudybaylighting.com/smart/> to find more Cloudy Bay smart products.

Support

- Visit <https://cloudybaylighting.com/smart/help>, or contact us at smart@cloudybaylighting.com to reach us for help.

©2022 CloudyBay Inc.

6 HEAD SMART NARROW FLOOD TRACK LIGHTING KIT



- **GENERAL:** All electrical connections must be in accordance with local and National Electrical Code (N.E.C.) standards.
- If you are unfamiliar with proper electrical wiring connections, contact and obtain the services of a qualified electrician.
- Use UL or IEC approved wire only for input/output connections.
- Remove fixture and mounting components from the box, and make sure that no parts are missing, by referencing the illustration in the illustration instructions.
- Turn power off before installation, inspection, or removal.
- Use all necessary precautions while performing this procedure. Consult a qualified electrician to ensure correct branch circuit conductor. Min 90°C supply conductors.
- Properly ground electrical enclosure. IT IS IMPERATIVE THAT THE OUTLET BOX BE PROPERLY GROUNDED.
- DO NOT REVERSE THE HOT AND NEUTRAL CONNECTIONS,
- OTHERWISE, SAFETY WILL BE COMPROMISED.
- This Integrated LED Fixture has no lamp/bulb to replace.
- **Contact us through:** smart@cloudybaylighting.com.

QUESTIONS? COMMENTS? SUGGESTIONS? COMPLAINTS?

- Please contact us through
- smart@cloudybaylighting.com or
- info@cloudybaylighting.com. We will do our best to make it right for you. Thank you very much!

3-Year Limited Warranty

- **LIMITED WARRANTY:** This fixture is warranted to be free from defects in workmanship and material for up to 3 years.

- Based upon reasonable household usage, when used in accordance with package and included instructions.
- If this fixture does not last for the time period guaranteed, the manufacturer will send you a replacement fixture upon receipt of the returned fixture, register receipt, and proof of purchase.
- To contact us, please email us at smart@cloudybaylighting.com. to find out how to return the fixture.
- We are committed to making high-quality products.
- Returning the fixture will help us monitor and further improve product quality.
- This replacement is the sole remedy available, and LIABILITY FOR INCIDENTAL OR CONSEQUENTIAL DAMAGES IS HEREBY EXPRESSLY EXCLUDED.

Amazon, Alexa, and all related logos are trademarks of [Amazon.com](https://www.amazon.com), Inc. or its affiliates

Documents / Resources



[Cloudy Bay LCSSL640SMXX RGBCW Color Changing Smart Light](#) [pdf] Installation Guide LCSSL640SMWH, 2A4FVLCSSL640SMWH, LCSSL640SMXX, LCSSL640SMXX RGBCW Color Changing Smart Light, RGBCW Color Changing Smart Light, Color Changing Smart Light, Changing Smart Light, Smart Light, Light

[Manuals+](#)