



Closer Pets C500 Automatic Pet Feeder With Digital Timer Instruction Manual

[Home](#) » [Closer Pets](#) » Closer Pets C500 Automatic Pet Feeder With Digital Timer Instruction Manual 

Closer Pets

IMPORTANT – PLEASE READ BEFORE USE
AUTOMATIC PET FEEDER
WITH DIGITAL TIMER
Instruction Manual
The new home of
Cat Mate Dog Mate Fish Mate
Ref. 365, CP365, CP465

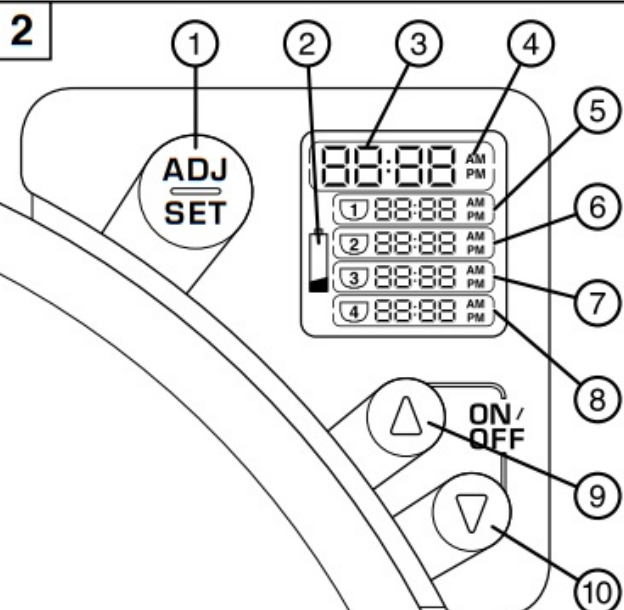
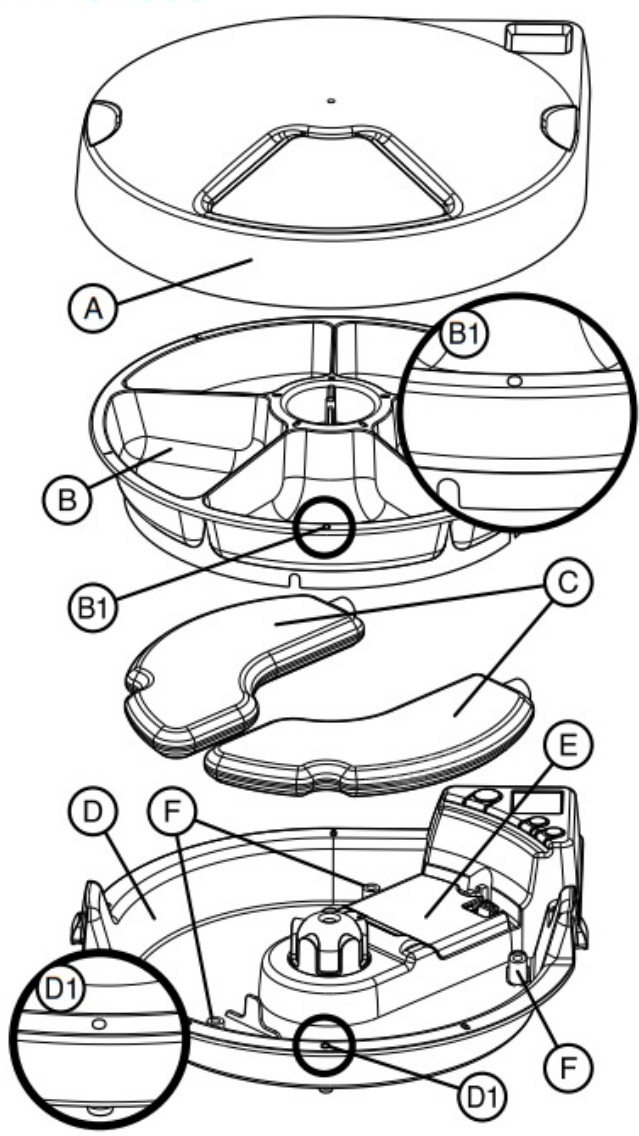
Contents

- [1 C500 Automatic Pet Feeder With Digital Timer](#)
- [2 IMPORTANT SAFETY INSTRUCTIONS](#)
- [3 Battery installation / bowl alignment](#)
- [4 Setting the clock](#)
- [5 Meal time setting](#)
- [6 Testing your C500 feeder](#)
- [7 Especially for cats](#)
- [8 Especially for dogs](#)
- [9 Hints on food storage](#)
- [10 Positioning of feeder](#)
- [11 Turning the feeder off and on](#)
- [12 Changing the batteries](#)
- [13 Cleaning](#)
- [14 GUARANTEE](#)
- [15 Documents / Resources](#)
 - [15.1 References](#)
- [16 Related Posts](#)

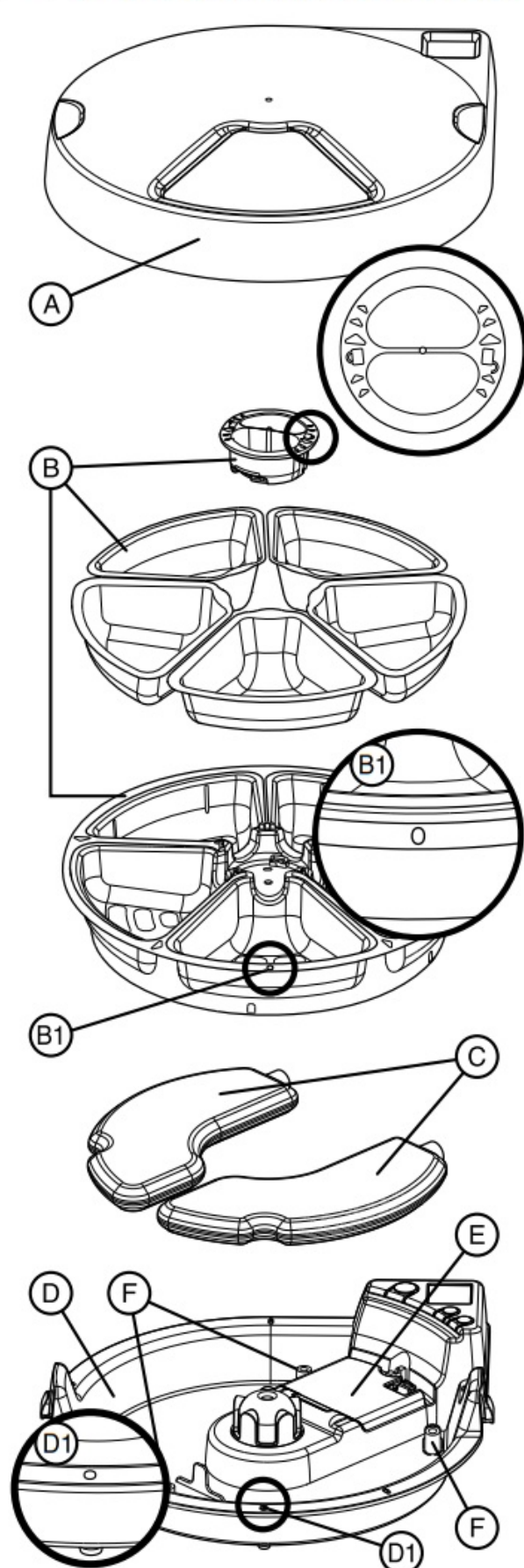
C500 Automatic Pet Feeder With Digital Timer

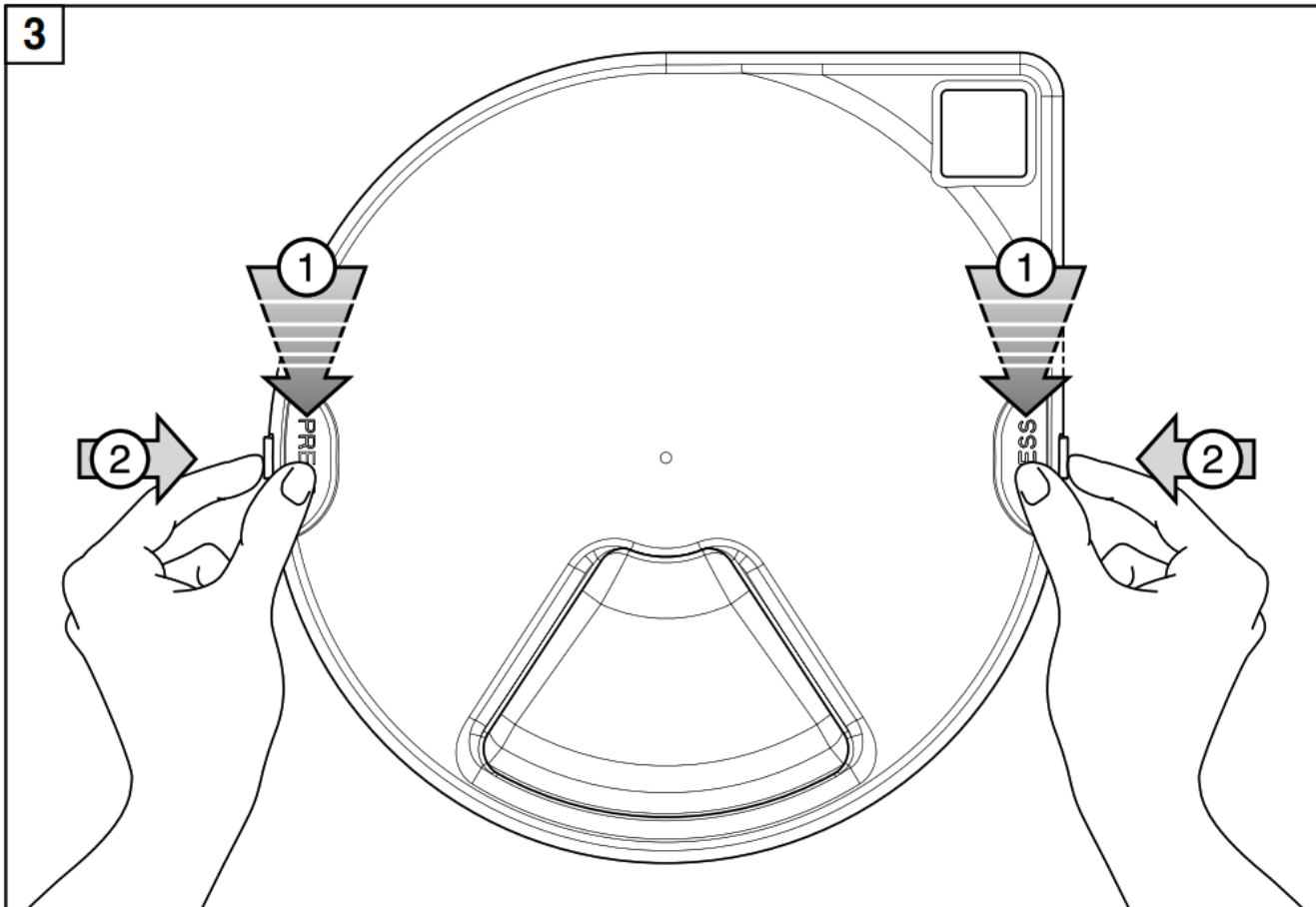
Designed and Manufactured by Pet Mate Ltd: Lyon Road, Hersham, Surrey KT12 3PU, UK
Imported to the EU by Closer Pets BV: Newtonlaan 115, 3584 BH Utrecht, The Netherlands
Imported to North America by Ani Mate: 104A Longview Street, Conroe, TX 77301, USA

1 CP365



1 CP465 Stainless Steel Bowls



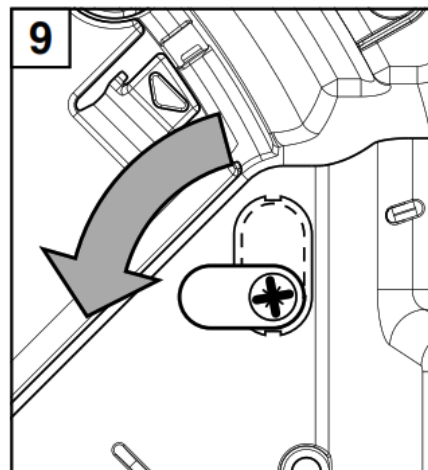
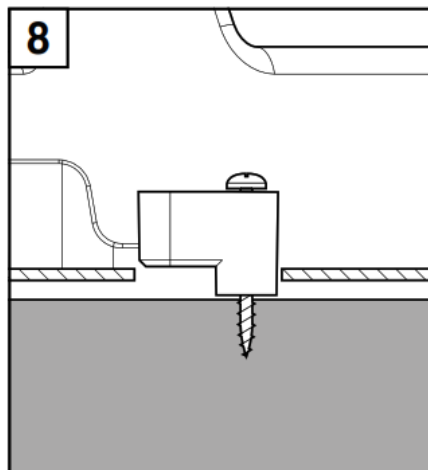
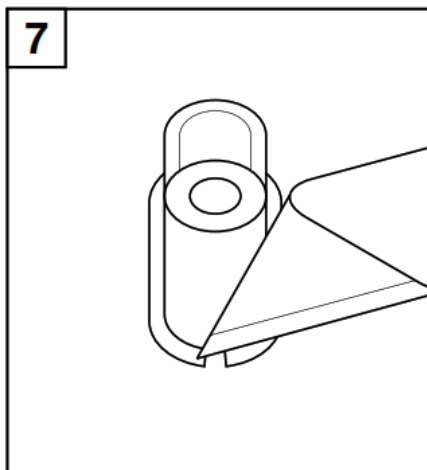
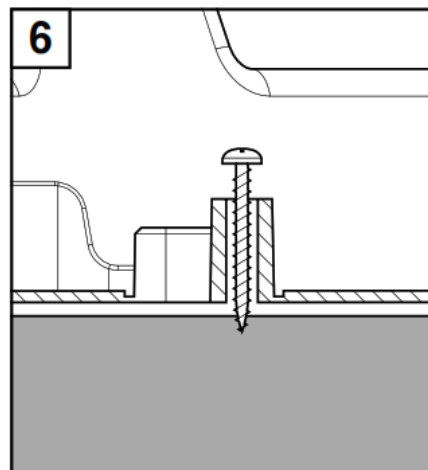
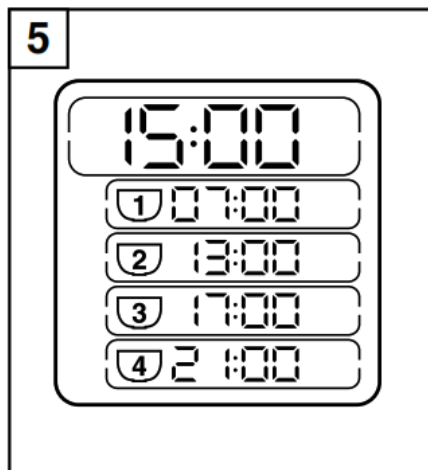
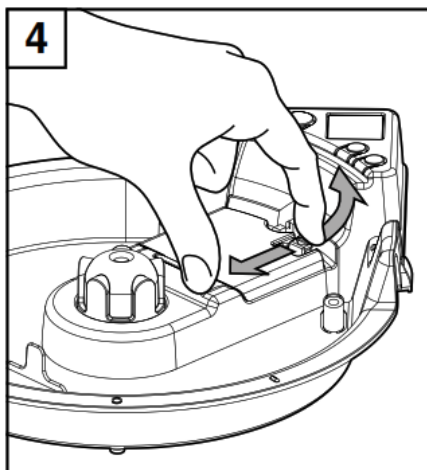


Components: (Fig. 1)

A. Feeder lid	D. Base unit
B. Food bowl	E. Battery cover
C. Ice packs	F. Retaining clips (x 3)

LCD Display / Buttons: (Fig. 2)

1. ADJ/SET button
2. Low battery indicator
3. Clock display (states current time)
4. AM/PM indicators (12 hour clock mode)
5. – 8. MEAL 1 – 4 indicators and feeding times
6. UP arrow button
7. DOWN arrow button



IMPORTANT SAFETY INSTRUCTIONS

- Read all instructions before installing or using this product.
- Register your purchase on-line at www.closerpets.com (see guarantee).
- Do not allow children to play with this product.
- Inspect product regularly for correct operation and damage. Do not use if in doubt.
- This product is designed for use with pets only, as described in these instructions.
- Dispose of all packaging material properly.

NOTE: Plastic bags could cause suffocation – keep away from children and animals.

SAVE THESE INSTRUCTIONS

Battery installation / bowl alignment

1.1 Remove feeder lid by pressing down lid and pushing in the sprung clips on both sides (Fig. 3). Lift the food bowl off the feeder base and remove the battery cover by releasing the retaining clip (Fig. 4).

1.2 Insert 3 x AA batteries using the orientation symbols marked on the inside of the compartment. Replace the battery cover.

After a short period of self testing, the clock (3 , Fig. 2) will show 12:00 AM outlined by a highlight frame with four feeding time indicators (5 – 8 , Fig. 2), showing – – : – – beneath.

Temporarily replace the food bowl and lid. If the lid and bowl are not correctly aligned, remove lid then press ADJ/SET and UP buttons together to 3 seconds to achieve alignment.

Good quality alkaline batteries should normally last approximately 12 months (dependent on use). You may use all popular batteries including rechargeable and 1.5v lithium batteries but the low battery indicator will only work

correctly with standard alkaline batteries.

Setting the clock

NOTE: To change clock between 24 hour and 12 hour (AM/PM) formats, press and hold the ADJ/SET button together with the DOWN arrow button until the format changes.

If at any point during setting a button is not pressed within 30 seconds, all digits will stop flashing and any adjustments made will revert to default/previous settings.

2.1 If necessary, move the highlight frame to outline the clock display using the UP or DOWN arrow buttons. To set the clock, press and hold the ADJ/SET button for 5 seconds until the hour figure starts to flash. Press the UP or DOWN arrow buttons to adjust the clock to the correct hour.

2.2 Press the ADJ/SET button and the minute figure will flash. Adjust the minutes using the UP or DOWN arrow buttons. Press ADJ/SET to save the setting.

Meal time setting

The C500 feeder will automatically serve meals at the same time(s) every day once you have set the required meal times. For example, if you require one meal a day you need only set the time for MEAL 1 to allow feeding up to 4 days.

If you require 2 meals each day you will need to set the times of MEAL 1 and MEAL 2 to allow feeding up to 2 days.

You may set up to 4 meals per day.

Set your pet's required daily meal times as follows:

NOTE: Meal times will automatically sort into chronological order (earliest to latest time) on the display. The next meal will be served at the next programmed meal time.

For example (see Fig. 5), the current time is 15:00, so the next meal will be served at 17:00.

3.1 Press the UP or DOWN arrow buttons to move the highlight frame to MEAL 1. Press and hold the ADJ/SET button for 3 seconds until the MEAL 1 hours starts to flash. Set the hour for MEAL 1 using the UP or DOWN arrow buttons. Press ADJ/SET to save setting.

3.2 The minute figure will flash. Adjust using the UP or DOWN arrow buttons. Press ADJ/SET to save setting.

NOTE: Meal times can only be set in 10 minute increments.

Repeat 3.1 and 3.2 for remaining daily meals if required.

3.3 To cancel a meal time setting use the UP or DOWN arrow buttons to highlight frame the relevant meal time.

Press and hold the ADJ/SET button until meal time flashes. Then press the UP and DOWN arrow buttons together until the time disappears and display shows -- : -- .

Testing your C500 feeder

Your C500 feeder is manufactured from top quality materials and is assembled to comply with rigorous quality standards.

Consequently, it should give you many years dependable use. However, we recommend you ensure its correct operation with your cat(s) while you are in attendance by completing set up as follows:

4.1 Fill the required number of bowls, starting clockwise from '1' (only fill bowl '0' if an immediate meal is required). Take care not to overfill the food bowls in order that the rotating lid is not fouled.

4.2 Insert two pre-frozen ice packs and replace food bowl aligning '0' on food bowl (B1, Fig. 1) with '0' on base unit (D1, Fig. 1). (If the '0' on the food bowl does not align with the '0' on the base unit, press the ADJ/SET and UP arrow buttons together for 3 seconds to achieve alignment.)

4.3 Finally, replace feeder lid ensuring the sprung clips on each side click into position and place unit in required position. The meal in the bowl numbered '1' will be served at the next programmed meal time.

4.4 Always turn feeder off after use (see Section 9).

Especially for cats

When leaving your cat, do not forget to make adequate toilet arrangements for it. Cats and particularly kittens, should not be left alone for long periods without someone to check periodically that all is well. We also recommend the use of a Closer Pets fountain for supply of fresh water.

Especially for dogs

Most small dogs will readily adapt to an automatic feeder, but you are recommended to supervise your dog's first few encounters to ensure that it is unlikely to damage the unit – which may be a problem with puppies.

When leaving your dog, do not forget to make adequate toilet arrangements for it. Dogs, and particularly puppies, should not be left alone for long periods without someone to check periodically that all is well. We also recommend the use of a Closer Pets fountain for supply of fresh water.

For extra stability the feeder may be attached to a wooden baseplate as follows:

6.1 Remove the feeder lid and food bowl. Place feeder in desired position on wooden board, locate the moulded in retaining clips (F, Fig. 1) and mark a screw hole using a suitable screw down through the centre of each hole. (Fig 6).

6.2 Break out the retaining clips by carefully cutting retaining webs with a sharp knife (Fig. 7).

6.3 Replace clips in holes with the flat side of the clip uppermost and screw to board at marked screw positions using suitable screws (Fig. 8).

6.4 Turn clips to lock/unlock feeder to wooden base (Fig. 9).

Hints on food storage

Your C500 feeder is designed for use with all pet foods.

The C500 should always be used with its ice packs unless the surrounding temperature is less than 5°C. (40°F.). To freeze the ice packs before use, place in a freezer for at least 6 hours. Spare ice packs are available from your dealer or directly from www.closerpets.com.

When using your C500 feeder with wet food, ensure that the food comes from a freshly opened can/pack. If the weather is very warm, you are advised not to leave wet food for long periods and may prefer to serve dry food, which has better keeping qualities. If in doubt, please consult the manufacturer of your cats' wet food.

Positioning of feeder

The C500 feeder should be used indoors or in a garage or outbuilding and should be placed in a cool corner, shaded from sunlight and away from moisture.

Turning the feeder off and on

To turn off the feeder and keep the programmed settings, press and hold the UP and DOWN arrow buttons together until 'OFF' is displayed on the LCD. Repeat the procedure to turn the feeder back on.

Changing the batteries

When the low battery indicator (2 , Fig. 2.) flashes on the LCD, alkaline batteries need replacing.

IMPORTANT:

- To keep the clock and all the meal settings, you must remove and replace all of the batteries within 60 seconds!
- DO NOT press any buttons during the removal or replacement of the batteries. Doing so will reset the unit and you will need to re-programme your settings.
- It is recommended to remove the batteries when the feeder is not to be used for prolonged periods.

Cleaning

The C500 feeder is very easy to clean. The lid and bowl may be washed in a dishwasher. The base unit can be wiped with a damp cloth. Under no circumstances should the base unit be immersed in water.

GUARANTEE



<http://weare.closerpets.com/register>

We offer a 1-year standard warranty. However, if you register your product at www.closerpets.com/pages/product-registration within 14 days of your purchase you get an additional 2-years warranty and Pet Mate Ltd will guarantee your product for a period of 3 years from the date of purchase. If you do not have access to a computer, please send details of your purchase with a copy of the receipt along with your name and address, and our Customer Services team will handle this for you. Please get in touch with Closer Pets Customer Services if you have a problem with your purchase. The guarantee is here to protect you if any defect arises due to faulty materials or manufacture. Any defective items will be repaired or replaced free of charge by Pet Mate Ltd, provided the defect has not been caused by neglect, misuse or normal wear and tear. Your statutory rights are not affected. To get started, register now by scanning the QR code or by following the link here: www.closerpets.com/pages/product-registration

UK CA CE Hereby, Pet Mate Ltd., declares that this product is in compliance with the essential requirements and other relevant provisions of EU and UK Directives.
All Declarations of Conformity (DoC) may be viewed at www.closerpets.com/pages/eu-doc.



IMPORTANT: Dispose of damaged/faulty/end-of-life products in accordance with locally applicable regulations for your country. UK/EU: Refer to Terms and Conditions section EU Waste Electrical and Electronic Equipment (WEEE) Directive on www.closerpets.com for more information.



www.closerpets.com



+44 (0)1932 700 001

N America (936) 760 4333

Documents / Resources

