



CLOCKAUDIO Control Panel Windows Application User Guide

[Home](#) » [CLOCKAUDIO](#) » **CLOCKAUDIO Control Panel Windows Application User Guide** 

Contents

- [1 CLOCKAUDIO Control Panel Windows Application](#)
- [2 GETTING STARTED](#)
- [3 NAVIGATING THE CONTROL PANEL](#)
- [4 DEVICE WINDOW](#)
- [5 DEVICE INFO](#)
- [6 CONFIGURATION PANEL](#)
- [7 DANTE DEVICE WINDOW](#)
- [8 MENU BAR](#)
- [9 TOOLS MENU](#)
- [10 FAQ](#)
- [11 TROUBLESHOOTING](#)
- [12 Documents / Resources](#)
- [13 Related Posts](#)



CLOCKAUDIO Control Panel Windows Application



GETTING STARTED

- The Clockaudio Control Panel is a Windows application designed to monitor Clockaudio-compatible IP products connected to a network. This tool allows users to communicate with CDT100 MK2, CDT100 MK3, CDT3 Dante products, and CUT-4 logic products, provided they have a compatible IP address.
- Dante and control devices can be discovered on link-local, DHCP, and static IP, but it's important to note that the Clockaudio Control Panel will only be able to communicate with the devices if they have the right IP address. To ensure proper communication, the Windows PC running the Clockaudio Control Panel must be on the same subnet as the Dante network. In case of a change in the Control network subnet, the Dante

- Network subnet must follow, and the PC must be updated for the product to be seen in the Clockaudio Control Panel.
- By default, IP products will receive a dynamic IP address. If there's no DHCP server present to assign an IP address, the device will go into link local mode and self-assign an IP address. The self-assigned IP address will always start with 169.254.x.x.
- PLEASE NOTE
- IP addresses on a VLAN will not be recognized by the Clockaudio Control Panel. Also, switches converting AVB to Dante might not allow the control network to be seen on the windows application.

NAVIGATING THE CONTROL PANEL

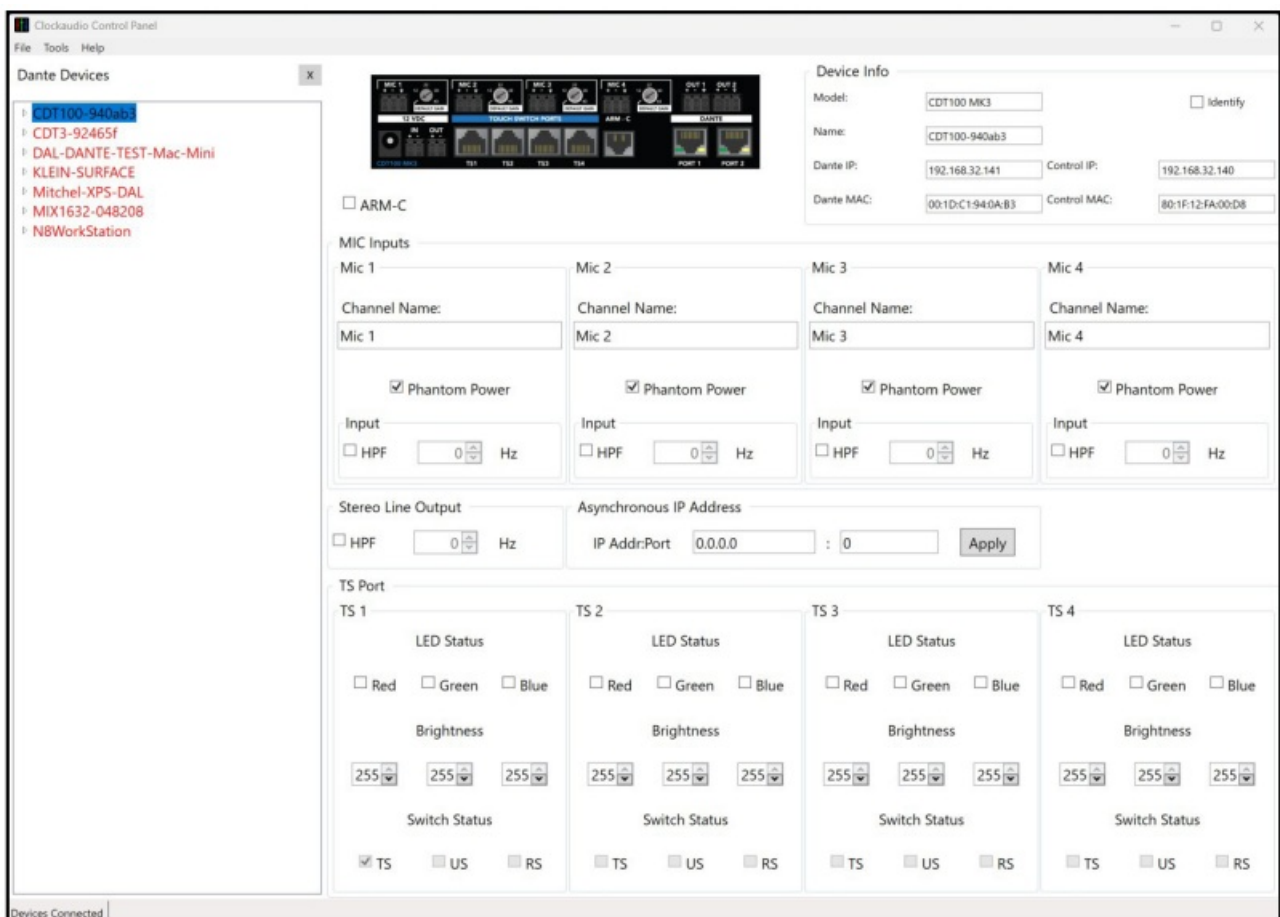
There are three main components to the Clockaudio Control Panel.

- Device Window
- Dante Device
- Menu Bar

DEVICE WINDOW

Available devices will appear in the Device Selection window on the left side of the Clockaudio Control Panel screen.

When a device is selected, an image of the chosen device will be displayed at the top corner of the Device Window. To the right and below the device image is information and configuration options.



DEVICE INFO

- **MODEL**

This field indicates the model name of the selected product.

- **NAME**

This field indicates the product name as shown on the Dante Network.

- **DANTE IP**

This field indicates the IP address of the products on the Dante Network.

- **DANTE MAC ADDRESS**

This field indicates the MAC address of the products on the Dante Network.

- **CONTROL IP**

This field indicates the IP address of the products on the Control Network.

- **CONTROL MAC**

This field indicates the MAC address of the products on the Control Network.

- **IDENTIFY**

This box allows you to identify the selected device. When selected, an LED on the front panel of the device will flash. This is helpful when configuring multiple devices in the same location.

CONFIGURATION PANEL

The software configuration panel for the Clockaudio Control Panel is organized into the following key sections:

- ARM-C Control
- Mic Inputs
- Asynchronous IP address and port
- Stereo line output
- TS Controls

ARM-C CONTROL

The ARM-C control allows the user to manually activate/deactivate the ARM-C output. Simply check the box to activate the output or un-check the box to deactivate the output.

MIC INPUTS

The MIC Inputs panel allows you to control settings for each microphone channel on the device.

CHANNEL NAME

This text field reports the Dante transmit channel name shown on the Dante network for the corresponding analog input channel.

Note: This field is non-editable. To edit the channel names, use the device list view control or use Dante Controller.

PHANTOM POWER CONTROL

The phantom power control section allows the user to turn the phantom power on or off for the corresponding inputs.

HIGH PASS FILTER

This field allows the user to control the input high pass filter frequency range between 50Hz and 100Hz.

ASYNCHRONOUS IP ADDRESS AND PORT

Changes in the logic input state can be transmitted asynchronously over a network. The location where these

messages are sent, such as Control Systems and Digital Signal Processors, is determined by the asynchronous IP and port. To disable asynchronous messages, the IP address 0.0.0.0 can be sent.

STEREO LINE OUTPUT HIGH PASS FILTER

This field allows the user to control the output high pass filter frequency range between 50Hz and 100Hz.

TS CONTROLS

The TS Port panel provides control of TS Port features for each TS Port on the selected device.

LED STATUS

A green, red and blue check box shows the state of the RGB LEDs on each channel. The state of every LED can be manually set from the application by clicking on the check box next to the appropriate LED.

Note: The state of the status indicators is taken from the connected device in real-time so when the state is changed, either manually or by a 3rd party system, there may be a short delay before the application status catches up.

BRIGHTNESS

The brightness fields can be used to alter the brightness of a Clockaudio touch switch LED. Brightness can be adjusted in increments of 1 up to 255. Separate controls for each LED color (red, green, and blue) provide the ability to further customize Status LED colors.

SWITCH STATUS

- **TS:** The switch status shows the state of the touch switches. When a touch switch is active, this will be checked.
- **US:** The user status will show the state of pin 8. When pin 8 is active, this will be checked.
- **RS:** The read switch status shows the state of the CRM microphone. When it is up, this will be checked.
- **Note:** There may be a short delay between the indicator and a change in the status.

DANTE DEVICE WINDOW

The left pane displays products connected on Dante and Control networks. Dante products will be visible on Dante controller as well as Clockaudio Control Panel. Products that do not offer Dante will be displayed only in the Control Panel.

• DEVICE NETWORK STATUS

The color of the Device Name in the Dante Device panel is a status indicator.

- **RED:** Configuration with Control Panel not supported
- **ORANGE:** Device can be configured with Control Panel and Dante Controller. Orange indicates that the device is connected to either Control Panel or Dante, but not both.
- **BLACK:** Device is ready to be configured with Control Panel

CLOCK AUDIO DEVICE CONNECTIVITY

- **CUT4:** Connects to Control Panel only
- **CDT100 MK2:** Connects to Dante only
- **CDT100 MK3:** Connects to both Control Panel and Dante.
- **CDT3:** Connects to Control Panel only

MENU BAR

FILE MENU

The following options are available in the File Menu.

- Device Interface
- Networks
- Dante Controller
- Presets (if applicable)

DEVICE INTERFACE

Device Interface is reserved for future use.

NETWORKS

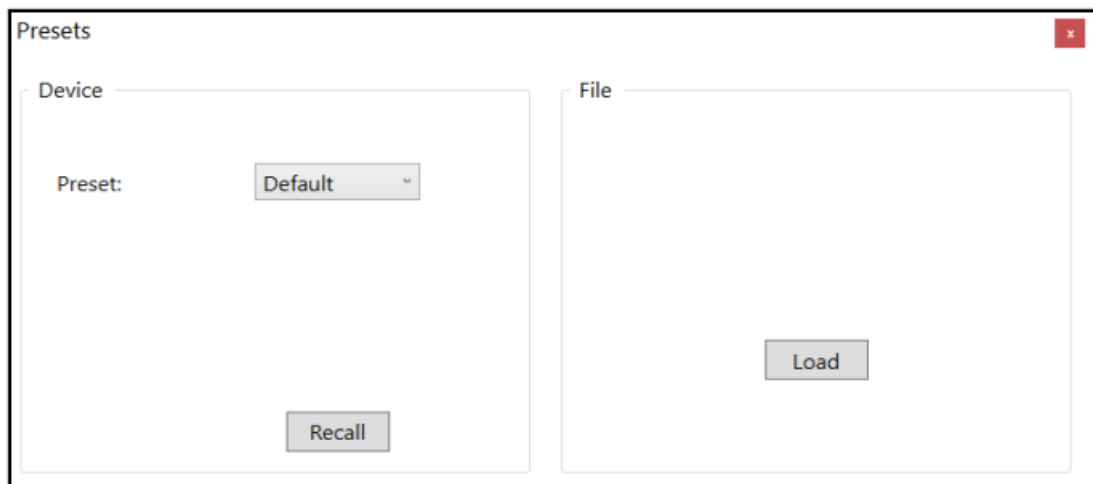
Allows selection of the network interface to use with Clockaudio Control Panel. Select the network interface that connects to Clockaudio devices.

DANTE CONTROLLER

This option launches the Dante Controller from Clockaudio Control Panel. If Dante Controller is not installed, an error window will pop up.

PRESETS

The presets window allows users to save and load device configuration files. The Preset option will only be visible when connected to a device that supports presets.



- In the right hand File section, press Load to load a configuration file from disk.
- Use the Device section to select the preset. Press Recall to save the preset to a File, or to the connected Device.
- Please Note, only certain features can be recalled such as Phantom Power, ARM-C, LED Status, and Brightness levels.

TOOLS MENU

The following options are available in the Tools Menu.

- Device Network settings

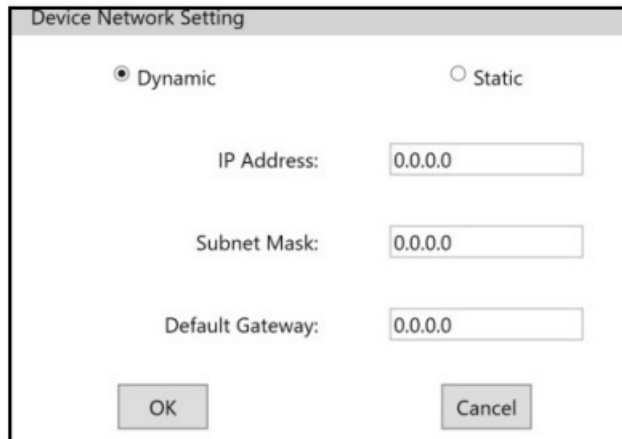
- Diagnostics
- Firmware Update

DEVICE NETWORK SETTINGS

Use this menu to setup the network address for each device.

DYNAMIC

Dynamic allows the network to determine the IP address, subnet mask and default gateway. This is the most common setting.



The screenshot shows a 'Device Network Setting' window. At the top, there are two radio buttons: 'Dynamic' (which is selected) and 'Static'. Below these are three text input fields. The first is labeled 'IP Address:' and contains '0.0.0.0'. The second is labeled 'Subnet Mask:' and contains '0.0.0.0'. The third is labeled 'Default Gateway:' and contains '0.0.0.0'. At the bottom of the window are two buttons: 'OK' and 'Cancel'.

STATIC

Select this option to manually define the IP address, subnet mask, and default gateway.

Note: All three fields must be defined when using a static IP. If the fields are defined, the change from dynamic to static will not occur.

DIAGNOSTIC

Clockaudio Control Panel's diagnostic window give the user access to different modes that allow a touch switch and/or a microphone to behave in use for different purposes: display, troubleshooting and performance.

DEMO

The Demo mode allows the touch switch to cycles through the color spectrum.

TS

The TS mode allows the user to cycle through RED, GREEN and BLUE LED's with the use of the capacitance touch button. This allows testing of connected Touch Switches and LEDs.

VU

The VU mode allows the touch switch to be used like a VU meter in conjunction with the microphone connected to the device. It is used to setup desired gain levels.

- **Green:** Signal at -40 dBFS or higher
- **Yellow:** Signal at -6 dBFS or higher
- **Red:** Signal at -3 dBFS or higher

LATENCY

Latency test mode measures how long it takes for a TS Port change message sent from the CDT100 MK3 to be received on an external controller.

The application displays statistics about the number of messages sent/received and the measured latency. An external controller is required for this mode. The external controller's IP address and port must be configured in the Asynchronous IP Address area of the application.

FIRMWARE UPDATE

Use the firmware update window to upload firmware files and upgrade or downgrade the firmware version on Clockaudio devices.

1. To update the firmware of a Clockaudio device:
2. Select a connected device from the top window.
3. Use the [...] button to select the firmware file to upload to the selected device.
4. Press Update to update the firmware of the selected device.

Selected	Name	Model	Version	Boot Version	Ultimo Version	IP Address	Status
<input checked="" type="checkbox"/>	CDT100-CZ	CDT100 MK3	0.102	1.06	4.2.2.3	192.168.1.81	

Update File:

Version:

FAQ

- **Will my usb to ethernet converter pass Dante and Logic?**

Not all wired dongles pass UDP and Dante, it depends on the brand. Disabling firewall can allow some dongles to work.

- **What does it mean if my devices shows up orange?**

It means your Dante and Logic are on different subnets. Sometimes it will be orange at first and turn black a couple of seconds later.

- **What does it mean if I see my device black and when I click on it CCP shows an error message?**

It means you are using different Vlans on your Network or your switch has unsupported management options.

- **Can I put my AV on clients network?**

Managing AV on a crowded network must be done with a good network background. Best practice is to put AV on an isolated network .

- **Does the CDT100 work with all switches?**

Unfortunately switches that convert AVB to Dante do not recognise UDP logic.

- **What do I do if I need to change my logic IP, I do not know it, I do not see it in my IP scanner and device appears in orange on CCP?**

By holding the reset button for 30 sec, you can factory reset your CDT100 to change your IP from static to dynamic. Once reseted, verify that Dante IP is in the same subnet as Logic IP.

TROUBLESHOOTING

The IP address does not change after inputting static IP on device	<ul style="list-style-type: none"> • Make sure all fields are filled when entering static IP. • Power cycle device. • Update or reinstall firmware.
My device does not appear in the device list	<ul style="list-style-type: none"> • Check device is powered with green LED. • Connect the device with a CAT5/CAT6 cable from the CDT100/CUT-4/CDT3's Network/Dante port directly to the PC or connect both devices to an unmanaged switch. • If both devices are in "DHCP Dynamic" mode, both should default to a link local IP address (169.254.xxx. xxx). • If both devices are in Static IP mode, make sure the PC is in the same network range in order for the Clockaudio device to appear. • If device is still not displaying, perform a Emergency Firmware Recovery (for more details about Emergency Firmware Recovery, please visit page 19 of the CDT100 MK3 user guide).
My firmware is out of date.	Go to the technical downloads tab of your device product page.
My Dante devices are accessible in Dante Controller but the Touch Switches do not react in the DSP or Control System.	<ul style="list-style-type: none"> • Ensure your device and PC are in the same network IP range. In the Clockaudio Control Panel, if you can see and interact with the device buttons, the problem is configuration related (ie. DSP or Control system configuration issue) and not hardware related. • Try DEMO MODE to see if buttons are connected properly. For more details about DEMO MODE please visit the Diagnostic section of this manual. • If using the TSC1, make sure the TS button is connected in the "Switch" port and the control cable from the TS port is connected to the TSC1's "Control" port. • If using custom CAT5/CAT6 cables, make sure logic pin (pin 5) is never connected to the 12v pin (pin 4) as this could damage the TSC1.

Clockaudio Ltd.


- **ADDRESS:** Unit C, Wellington Gate, Silverthorne Way, Waterlooville, Hampshire PO7 7XY, UK Tel: +44(0)23 9225-1193
- **Fax:** +44(0)23 9225 1201
- **Email:** info@Clockaudio.co.uk
- **ADDRESS:** Clockaudio North America Inc. 2891 Rue du Meunier, Unit 103, Vaudreuil-Dorion, QC, Canada J7V 8P2
- **Toll Free:** 1-888-424-9797

- **Tel:** 450-424-9797
- **Fax:** 450-424-3660
- **Email:** info@clockaudio.com
- **ADDRESS:** Clockaudio PTE Ltd. BizTech Centre, Unit # 01-02, 627A Aljunied Road, Singapore, 389842
- **Tel:** +65 67484738
- **Fax:** +65 67484428
- **Email:** info@clockaudio.com.sg

Clockaudio PTE Ltd.

- **ADDRESS:** BizTech Centre, Unit # 01-02, 627A Aljunied Road, Singapore, 389842
- **Tel:** +65 67484738
- **Fax:** +65 67484428
- **Email:** info@clockaudio.com.sg

Documents / Resources

 CLOCKAUDIO CONTROL PANEL Windows Application User Guide © 2011 Clockaudio PTE Ltd. All rights reserved. No part of this publication may be reproduced, stored in a retrieval system, or transmitted, in any form or by any means, electronic, mechanical, photocopying, recording, or by any information storage or retrieval system, without prior written permission from Clockaudio PTE Ltd. Printed in Singapore. First Edition: 2011 Second Edition: 2012 Third Edition: 2013 Fourth Edition: 2014 Fifth Edition: 2015 Sixth Edition: 2016 Seventh Edition: 2017 Eighth Edition: 2018 Ninth Edition: 2019 Tenth Edition: 2020 Eleventh Edition: 2021 Twelfth Edition: 2022 Thirteenth Edition: 2023 Fourteenth Edition: 2024 Fifteenth Edition: 2025	<p>CLOCKAUDIO Control Panel Windows Application [pdf] User Guide CDT100 MK2, CDT100 MK3, CDT3 Dante, CUT-4 logic., Control Panel Windows Application, Control Panel Windows, Application, Control Panel, Windows Application</p>
---	---