

Clinton
Clinton Electronics
CE-TR30ADRW5C
Active Deterrence IP
Turret Camera



Clinton Electronics CE-TR30ADRW5C Active Deterrence IP Turret Camera Installation Guide

[Home](#) » [Clinton Electronics](#) » Clinton Electronics CE-TR30ADRW5C Active Deterrence IP Turret Camera Installation Guide 

Contents

- [1 Clinton Electronics CE-TR30ADRW5C Active Deterrence IP Turret Camera](#)
- [2 Included Items](#)
- [3 OVERVIEW](#)
- [4 PREPARE MOUNTING SURFACE](#)
- [5 SEPARATE CAMERA FROM MOUNTING BASE](#)
- [6 INSTALL MOUNTING BASE](#)
- [7 CONNECT NETWORK CABLE](#)
- [8 ATTACH CAMERA TO MOUNTING BASE & ADJUST](#)
- [9 FINAL ADJUSTMENT & TIGHTEN COLLAR](#)
- [10 Documents / Resources](#)
 - [10.1 References](#)
- [11 Related Posts](#)

Clinton

Clinton Electronics CE-TR30ADRW5C Active Deterrence IP Turret Camera



Included Items

- Turret Camera x 1
- 2mm Allen Wrench x 1
- RJ45 Weather Resistant Cover x 1
- Phillips Head Screws x 4
- Drywall Anchors x 4
- Instructions x 1
- Mounting Template x 1
- Rubber Cable Plug x 1

Required Items:

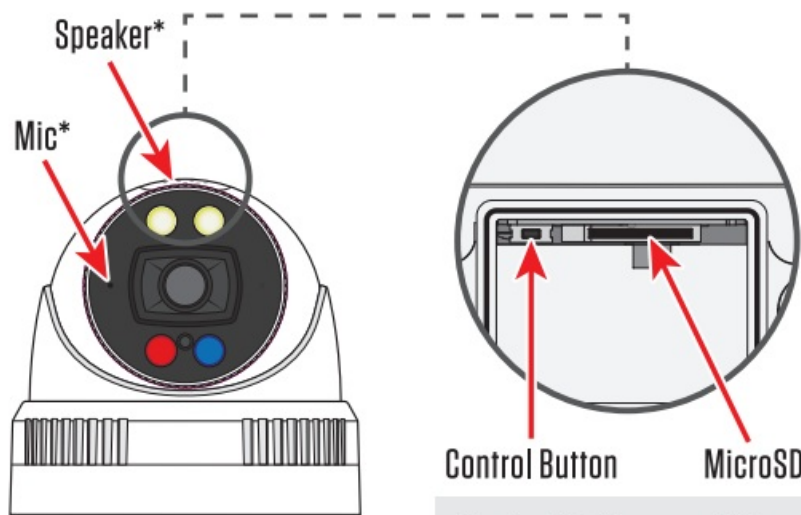
- Phillips Head Screwdriver
- PoE Power Supply
- Drill with 13/16" Drill Bit/Hole Saw

Optional Items:

- microSD Card (not included)

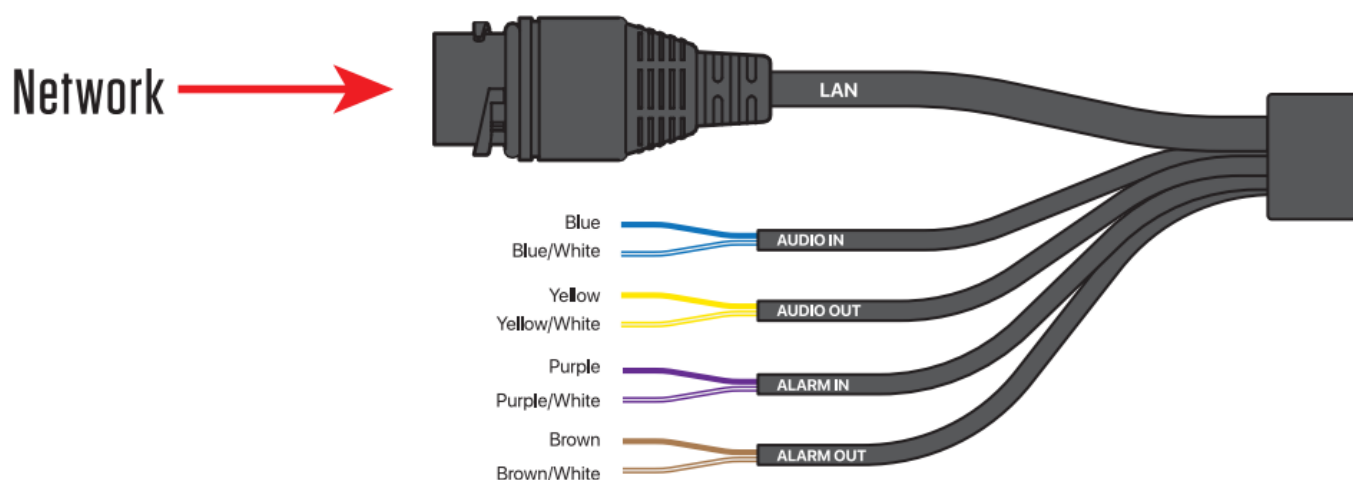
Installation should be performed by qualified service personnel only and should conform to all applicable local codes.

OVERVIEW



*Audio is disabled by default

Control Button and MicroSD Slot are located under the speaker cover.



INPUTS / OUTPUTS*			
Audio In		Alarm In	
Blue (+)	Blue	Purple (+)	Purple
Blue (-)	Blue/White	Purple (-)	Purple/White
Audio Out		Alarm Out	
Yellow (+)	Yellow	Brown (+)	Brown
Yellow (-)	Yellow/White	Brown (-)	Brown/White

*Connections may vary by model.

A LOGIN INFO

This camera does not have a default password. You must create a password to set up and view the camera. The username is ADMIN.

A IP ADDRESS

This camera is set to use DHCP. If no DHCP network is available, you can connect to the camera with the default IP Address: 192.168.1.90

CAMERA DISCOVERY

Scan the QR Code to the right to download Clinton IP Finder.



Available for Windows or MacOS.



Clinton IP Finder

REBOOT/ RESET

- REBOOT: Press and hold the CONTROL BUTTON for 5 seconds, then release.
- FACTORY DEFAULT: Press and hold the CONTROL BUTTON for 15 seconds, then release.

SUPPORT

Need Help? Scan the QR Code or go to www.support.clintonelectronics.com to search our Knowledge Base, find firmware updates, or download software.

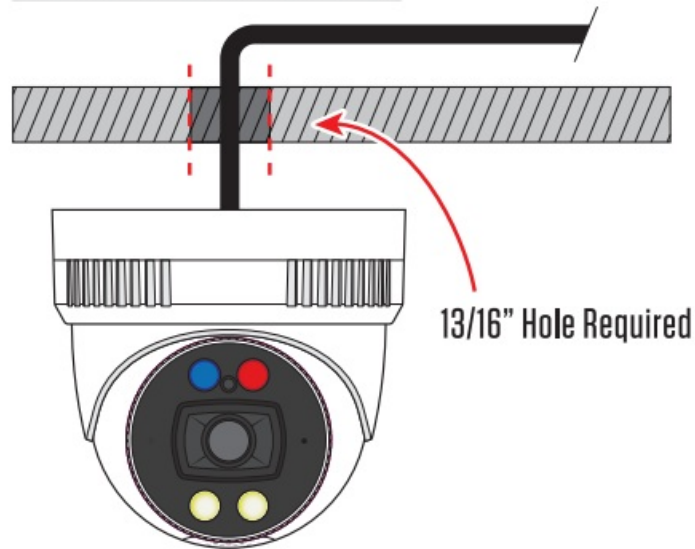


Clinton Support

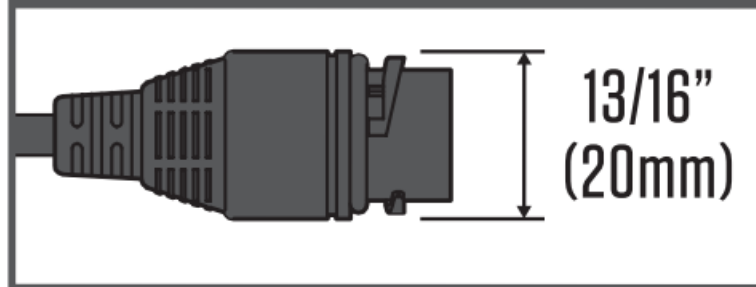
PREPARE MOUNTING SURFACE

Depending on the installation type; cable routed through the surface or cable routed on surface exterior- a hole may be required. If the cable will be routed through the surface, a minimum 13/16" hole is required to fit the cable connections through the mounting surface.

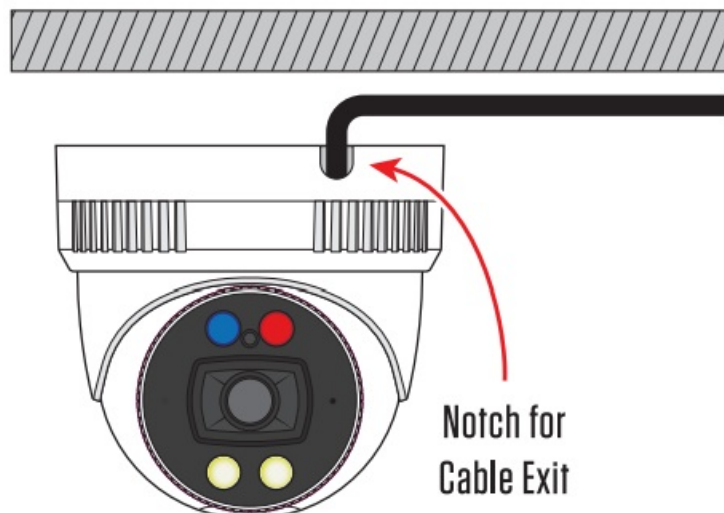
Cable Routed Through Surface



HOLE SIZE IF PASSING CABLE THROUGH MOUNTING SURFACE

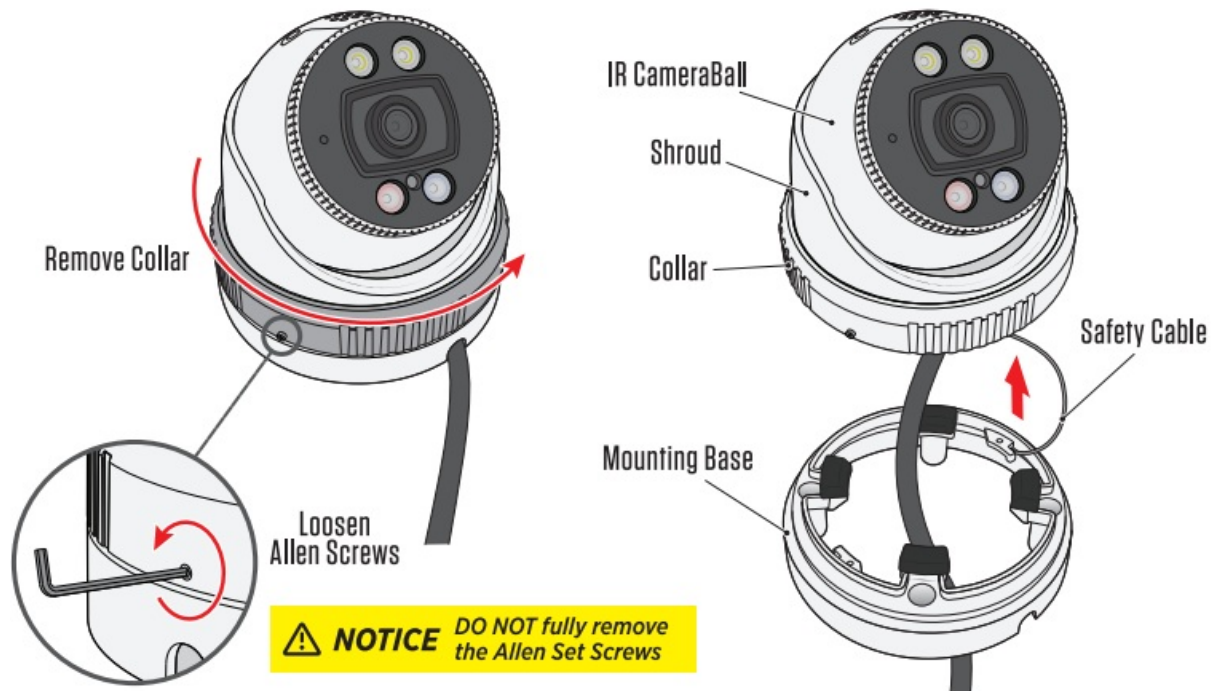


Cable Routed On Surface



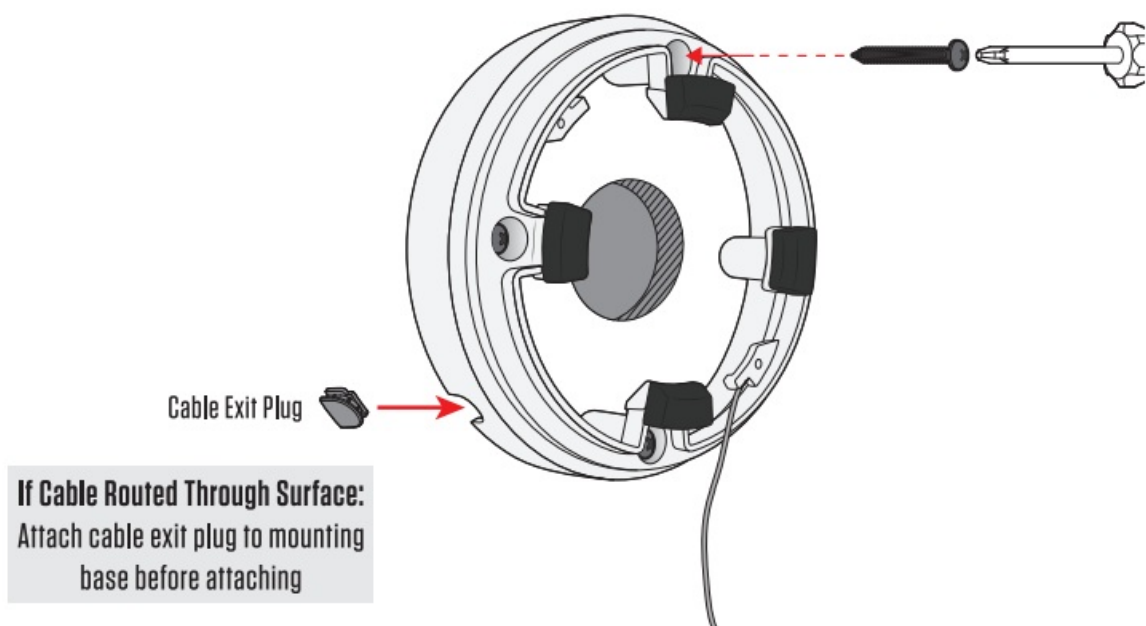
SEPARATE CAMERA FROM MOUNTING BASE

Loosen the two Allen set screws on the base of the camera with the included 2mm Allen wrench, (do not remove the set screws) then rotate the collar counter-clockwise to separate the IR camera ball, shroud, and collar from the mounting plate. The camera ball will be connected to the mounting base with a safety cable.



INSTALL MOUNTING BASE

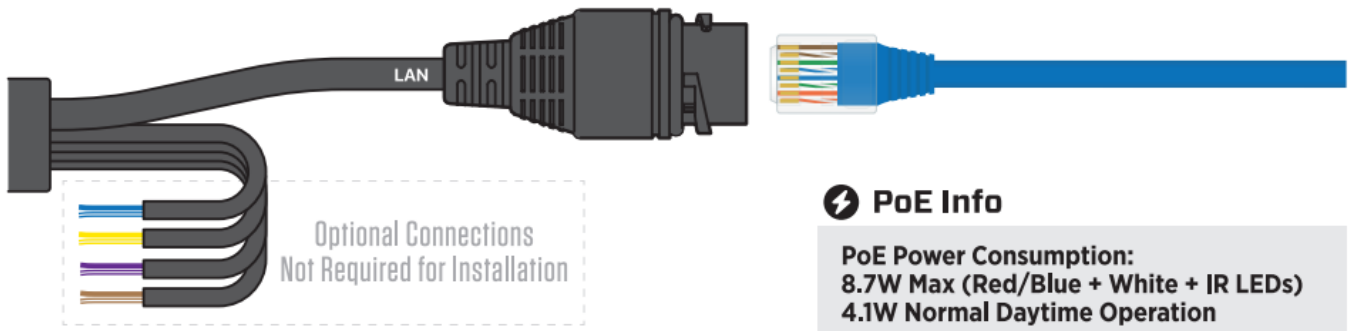
If desired, use the included mounting template to mark and pre-drill holes. Hold the mounting base onto the surface and attach using the (4) supplied Phillips-head screws. *NOTE: It is recommended to use the drywall anchors if mounting to drywall.



CONNECT NETWORK CABLE

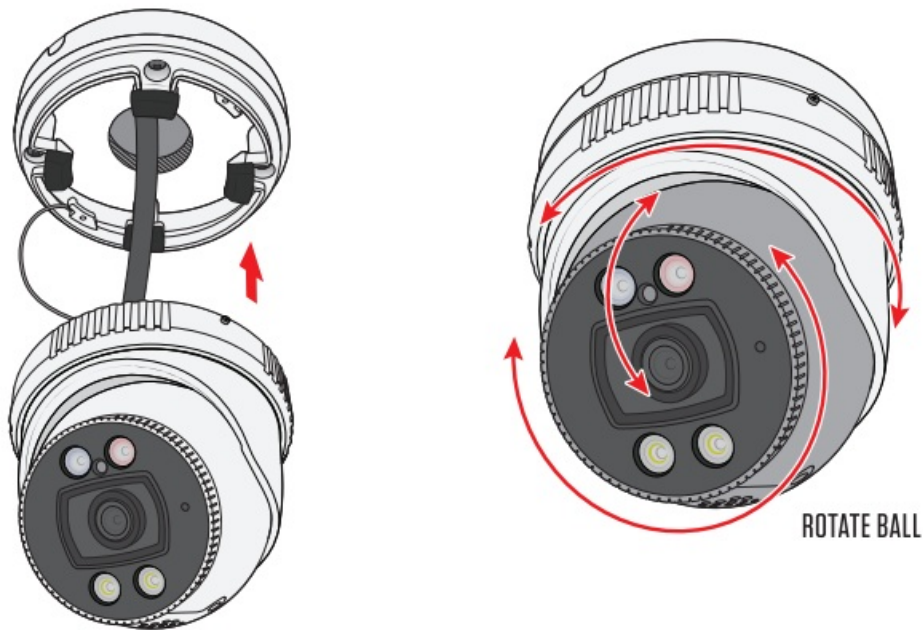
Connect a network cable to the camera. Ensure the network cable length is less than 300ft, longer cable runs will cause data and power issues. The camera will automatically power ON when connected to a PoE switch or injector. Ensure the PoE source has enough available power budget for powering the camera.

If the network cable will be exposed to weather/moisture, it is strongly suggested to use the included weather resistant cover. *Refer to separate "Cable Weatherproofing Guide."



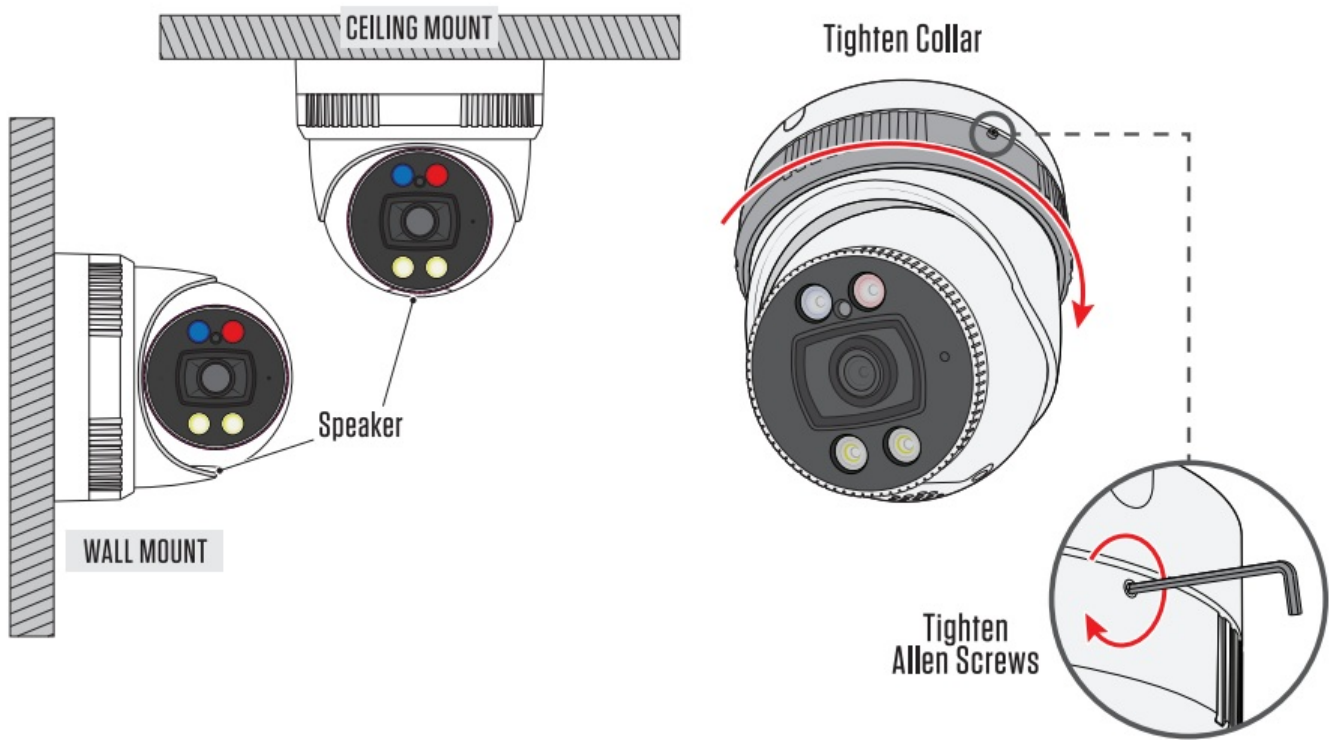
ATTACH CAMERA TD MOUNTING BASE & ADJUST

Guide the IR camera ball, shroud, and collar onto the mounting base, then screw the collar onto the mounting base. Loosely tighten the two set screw with the included 2mm Allen wrench. While the collar and set screws are loose, make camera angle adjustments by rotating the camera ball as necessary.



FINAL ADJUSTMENT & TIGHTEN COLLAR

After adjusting the camera angle, firmly tighten the collar and set screws to lock the camera angle in position. Ensure the white LEDs & speaker are oriented to the "bottom" of the camera. If oriented differently the image may be upside-down or rotated.



6701 Clinton Road Loves Park, IL 61111

- 800.549.6393 (Support)
- www.clintonelectronics.com

Documents / Resources

	<p>Clinton Electronics CE-TR30ADRW5C Active Deterrence IP Turret Camera [pdf] Installation Guide</p> <p>TR30, A4half, CE-TR30ADRW5C Active Deterrence IP Turret Camera, CE-TR30ADRW5C, Active Deterrence IP Turret Camera, Deterrence IP Turret Camera, IP Turret Camera, Turret Camera</p>
--	---

References

- [User Manual](#)

[Manuals+](#), [Privacy Policy](#)

This website is an independent publication and is neither affiliated with nor endorsed by any of the trademark owners. The "Bluetooth®" word mark and logos are registered trademarks owned by Bluetooth SIG, Inc. The "Wi-Fi®" word mark and logos are registered trademarks owned by the Wi-Fi Alliance. Any use of these marks on this website does not imply any affiliation with or endorsement.