



Clinton Electronics CE-PS102 Power Over Ethernet Installation Guide

[Home](#) » [Clinton Electronics](#) » Clinton Electronics CE-PS102 Power Over Ethernet Installation Guide 

Clinton Electronics CE-PS102 Power Over Ethernet Installation Guide



TO REDUCE THE RISK OF ELECTRIC SHOCK, DO NOT DISASSEMBLE. NO USER SERVICEABLE PARTS INSIDE. REFER SERVICE TO QUALIFIED PERSONNEL.

WARNING:

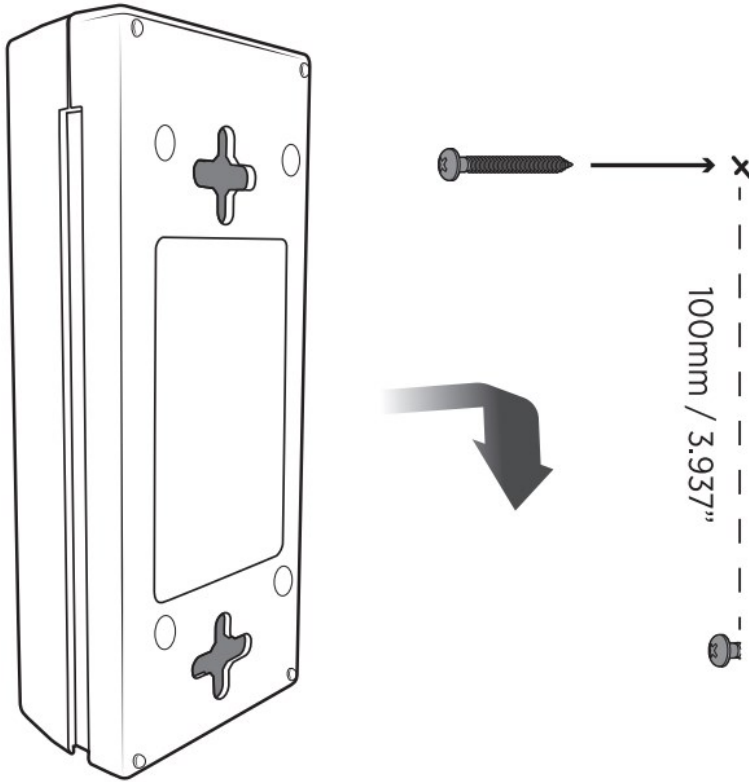
- To reduce the risk of fire or electric shock, do not expose the unit to rain or moisture. Do not install power supplies in places with high moisture or near water.
- This installation should be made by qualified service personnel and should conform to all local codes and in

accordance with the National Electrical Code.

- For Indoor Use Only!
- Risk of electrical shock and/or equipment damage. Disconnect power before servicing this appliance.
- Measure output voltage before connecting devices. This helps avoid potential damage.

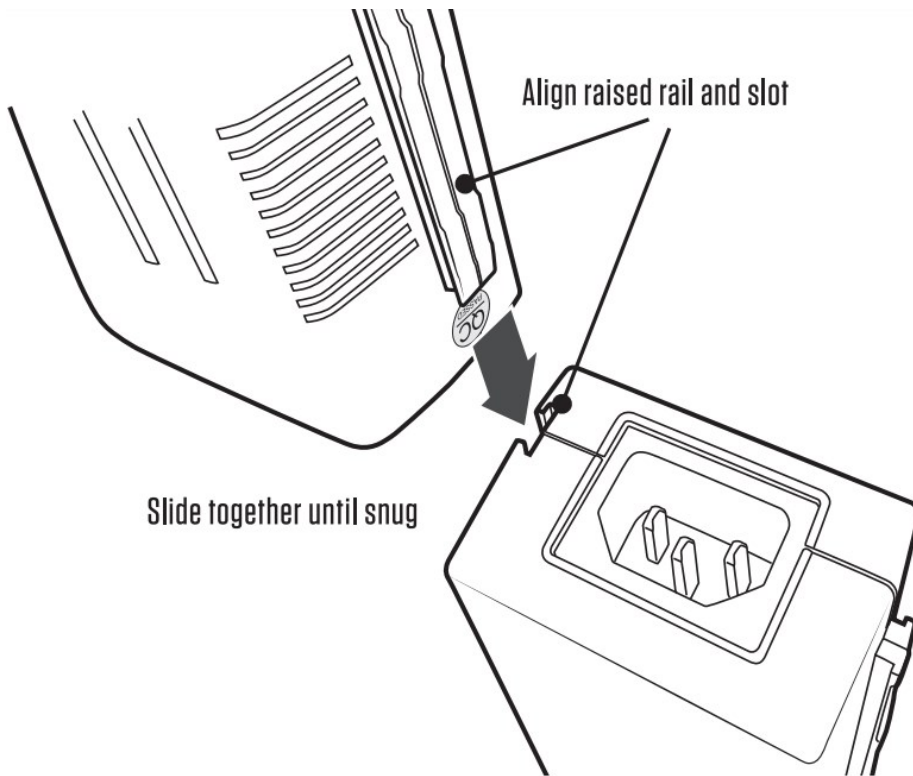
Wall Mount – Optional

Measure approximate 3-15/16" (100mm) and make two marks. Insert appropriate screws into desired mounting surface, leaving enough of the heads of the screws exposed to hang the PoE Injector on. Guide the PoE Injector onto the two screws and hang in place.



Interlocking Slide Mount – Optional

If desired, multiple PoE Injectors can be attached together. To attach, align the raised rail to from one PoE Injector to the slotted side on a second PoE Injector. Slide together until they snap in place.



Contents

[1 INSTALLATION:](#)

[2 Documents / Resources](#)

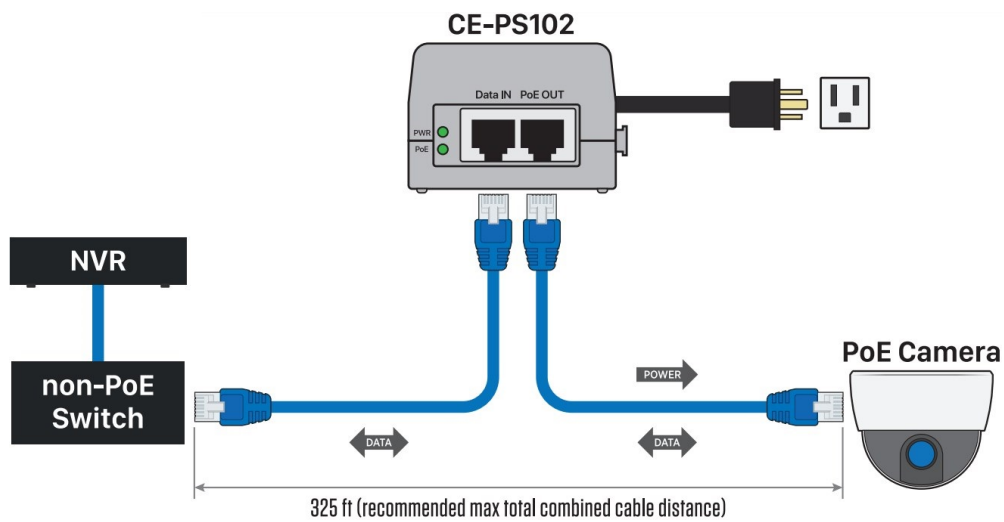
[3 Related Posts](#)

INSTALLATION:

1. Connect CAT5e/CAT6 cable from switch/hub to connector on CE-PS102 marked Data IN.
2. Connect CAT5e/CAT6 cable from IP camera or other network device to connector on CE-PS102 marked PoE OUT.
3. Connect AC power cord from PoE Injector to main power source.
 - During boot-up the LEDs should illuminate GREEN if proper power and PoE connections have been made. If LED indicators are not illuminated check cable connections.

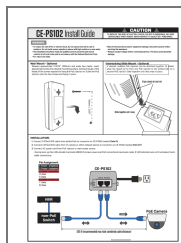
Pin Assignment

1. Power – (negative)
2. Power – (negative)
3. **Power+ (positive)**
4. Data
5. Data
6. **Power +(positive)**
7. Data
8. Data



clintonelectronics | 6701 Clinton Road Loves Park, IL 61111 | 800.549.6393 (Support) | www.clintonelectronics.com

Documents / Resources



[Clinton Electronics CE-PS102 Power Over Ethernet](#) [pdf] Installation Guide
CE-PS102 Power Over Ethernet, CE-PS102, Power Over Ethernet, Over Ethernet, Ethernet