



climax Technology PCU-8 Pull Cord Unit Alarm Instruction Manual

[Home](#) » [Climax Technology](#) » climax Technology PCU-8 Pull Cord Unit Alarm Instruction Manual 

climax Technology PCU-8 Pull Cord Unit Alarm



Contents

- [1 Pull Cord Unit \(PCU-8\)](#)
- [2 Parts Identification](#)
- [3 Battery](#)
- [4 Learn into Control Panel](#)
- [5 Pair with Emergency Strobe Light](#)
- [6 Supervision](#)
- [7 Operation](#)
- [8 Installation](#)
- [9 Federal Communication Commission Interference Statement](#)
- [10 Documents / Resources](#)
 - [10.1 References](#)
- [11 Related Posts](#)

Pull Cord Unit (PCU-8)

The Pull Cord Unit is used to activate an alarm when the cord is pulled or when the button is pressed. It can be quickly installed in easily accessible indoor locations, allowing users to pull the cord or press the button for emergency help.

PCU-8 is rated at IPX4 which can resist the splashing of water.

Parts Identification

1. **LED Indicator (Red)**

The LED Indicator will be on for 3 seconds when PCU-8 is activated.

2. **Button** (refer to Operation section for details)

Press for 2 seconds: Alarm activation

Press for 5 seconds: Alarm cancellation

3. **Pull Cord Switch**

Pull the attached cord: Alarm activation

Push the switch back: Alarm cancellation

4. **Pull Cord** (For cord installation, refer to Installation section below)

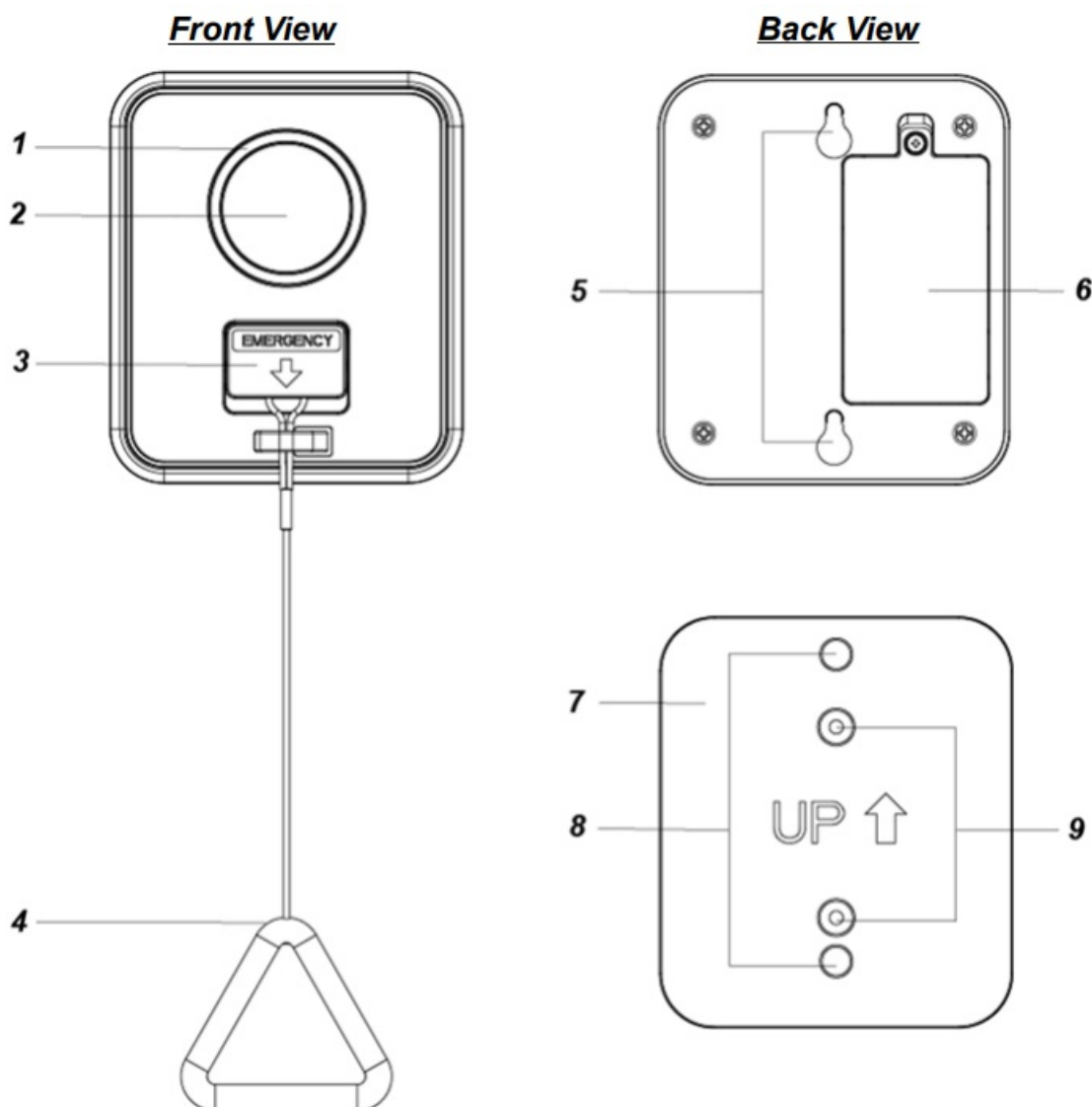
5. **Hook Holes**

6. **Battery Compartment Cover**

7. **Mounting Plate**

8. **Hooks**

9. **Mounting Holes**



Battery

- PCU-8 uses two 1.5V alkaline batteries as its power source.
- PCU-8 can detect low battery automatically. When low battery is detected, it will transmit a low battery signal.
- When the battery having low battery voltage is inserted, the LED indicator will flash 3 times to signal.

- To insert the batteries, please refer to Battery Replacement for details.

Learn into Control Panel

- Put the Control Panel into learning mode (refer to the Control Panel's manual for details).
- Pull the cord on PCU-8 to transmit the learn code.

Refer to Control Panel's manual to complete the learning in process.

<NOTE>



If PCU-8 works with the Locator system only, there is no need to learn PCU-8 into the locator / repeater / Base unit.

Pair with Emergency Strobe Light

PCU-8 can be paired with the Emergency Strobe Light (ESL-1), which will light up its LEDs to provide visual alert upon alarm activation from PCU-8.

- Put the Emergency Strobe Light into learning mode. Refer to the Emergency Strobe Light's manual for details.
- Press the button for 2 seconds or pull the cord to transmit an active code for pairing.
- Refer to your Emergency Strobe Light manual to complete the pairing process.

Supervision

- PCU-8 will send supervision signals to the Locator/Control Panel periodically.
- When the Control Panel fails to receive the supervision signal within the preprogrammed period, it will indicate a fault.

Operation

When in emergency, pull the cord or press the button to activate an alarm; PCU-8 will transmit an emergency signal and light up with ESL-1.

PCU-8 will light up for a total of 15 minutes if the user does not cancel the alarm.

To trigger an alarm:

- Press the button for 2 seconds, or
- Pull the cord for the cord switch to be in the "down" position

To cancel the alarm:

- Press the button for 5 seconds to cancel the alarm triggered by button press, or
- Push the cord switch back to the "up" position to cancel the alarm triggered by cord pulling
- **In the 15-minute alarm period,**
- Pressing the button for 2 seconds and releasing it will trigger an alarm again and reset the alarm period;
- Pressing the button for 5 minutes will cancel the alarm.

Installation

PCU-8 Installation

A mounting plate is provided for PCU-8 installation.

The mounting plate can be fixed onto the wall with screws or double-sided adhesives provided.

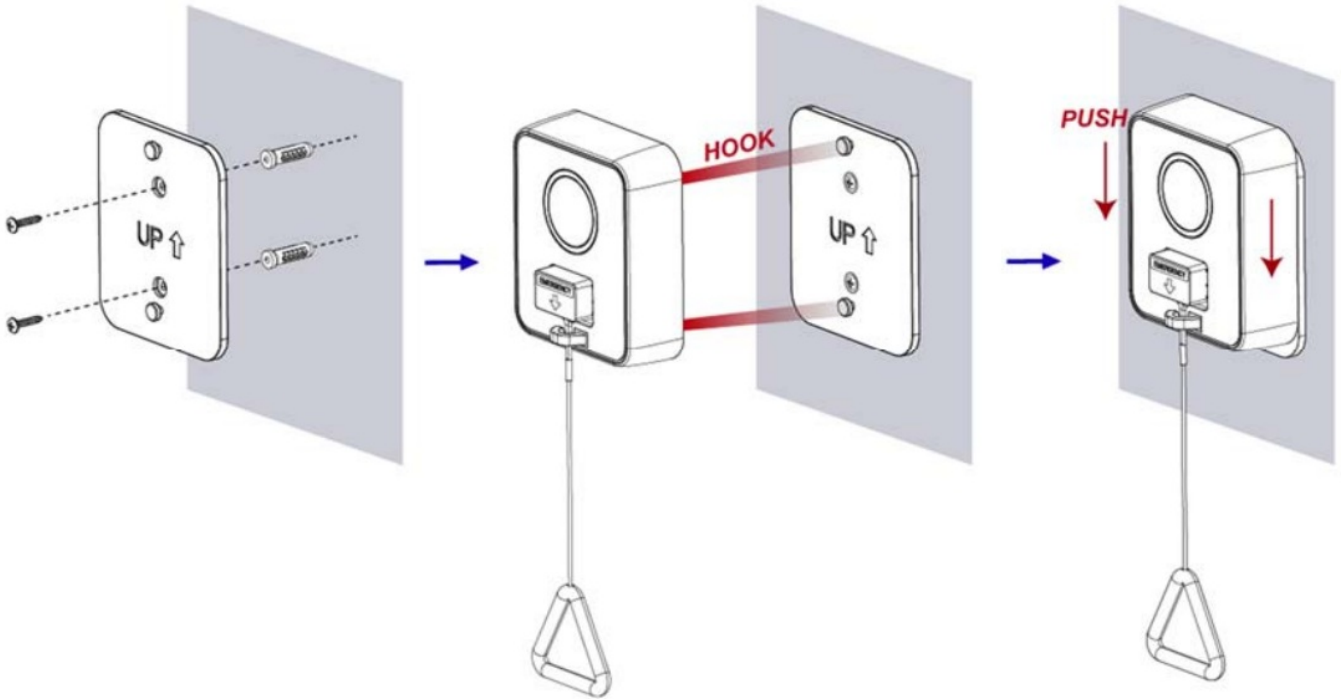
Mounting with screws

Step 1 Use the two mounting holes on the mounting plate as a template to drill 2 holes into the wall surface.

Step 2 (Optional) Insert the wall plugs if PCU-8 is to be mounted onto plaster or bricks.

Step 3 Screw the mounting plate onto the wall.

Step 4 Hook PCU-8 onto the mounting plate and push it downwards to firmly fix it in place.



Mounting with adhesives

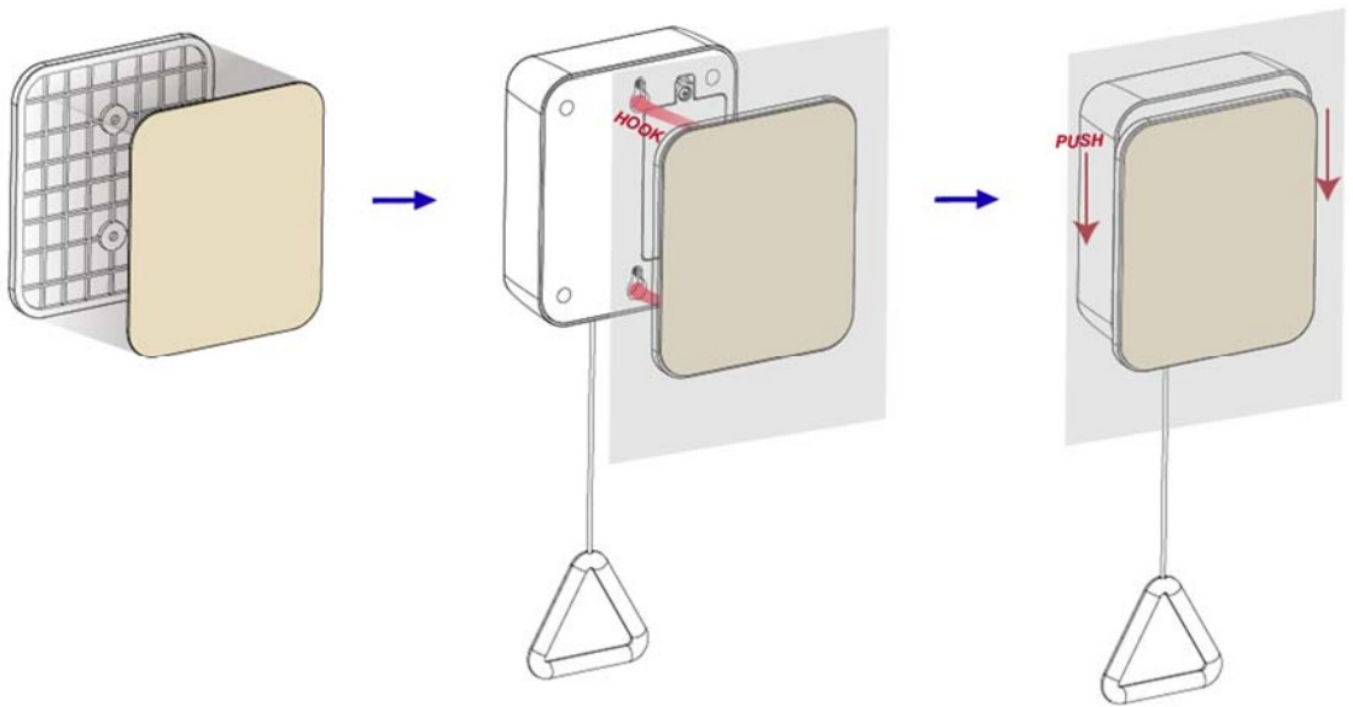
Step 1 Clean the wall surface with degreaser if needed.

Step 2 Tape the double-sided adhesive onto the back of the mounting plate.

Step 3 Remove the liner and tape the mounting plate onto the wall.

Step 4 Firmly press the mounting plate against the wall to ensure good adhesion.

Step 5 After 24 hours, hook PCU-8 onto the mounting plate and push it downwards to firmly fix it in place.

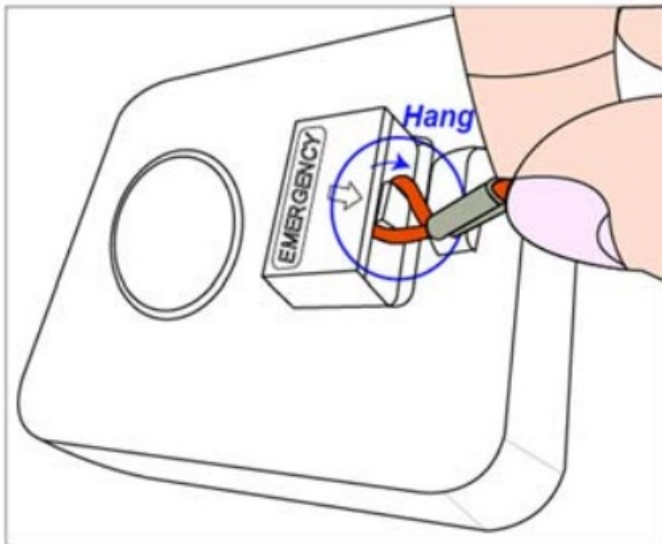


Pull Cord Installation

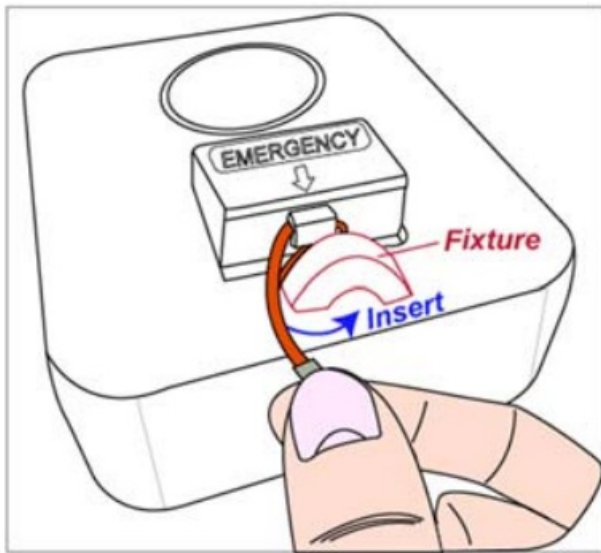
Please follow the steps below to install or remove the pull cord.

Pull Cord Attachment

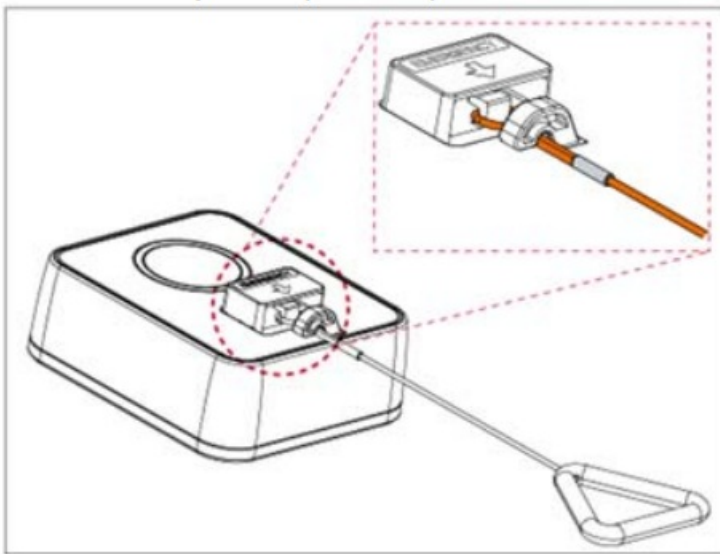
Step 1 Hang the hanging loop onto the pull cord switch.



Step 2 Insert the cord into the opening of the fixture.

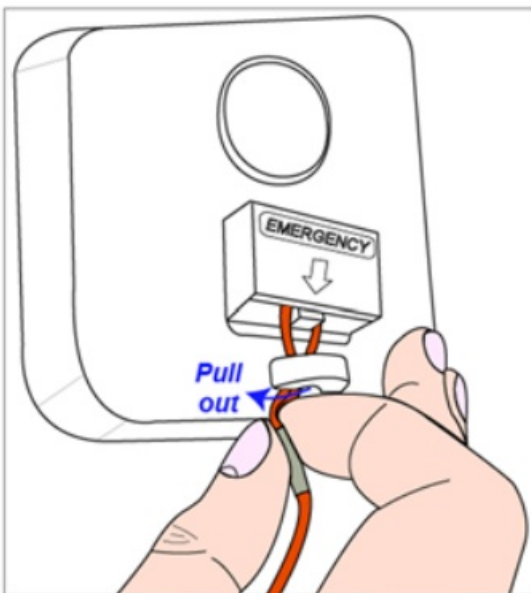


Step 3 The cord installation is now complete (FIG. 3).

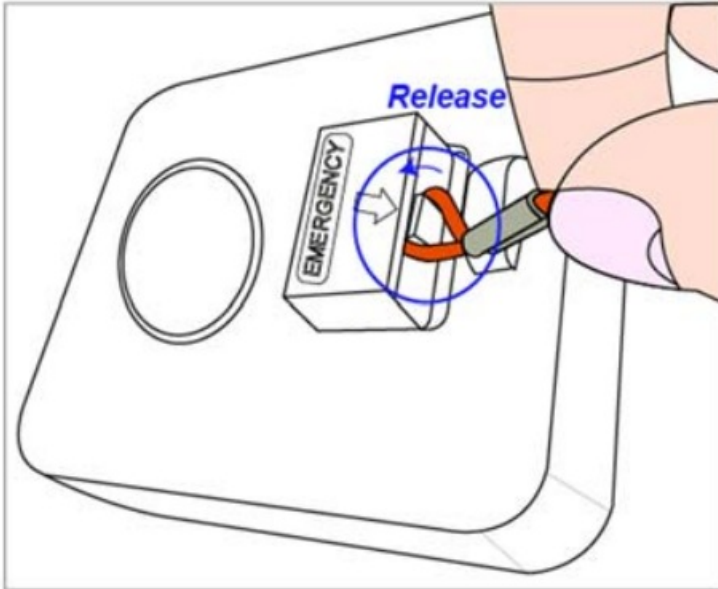


Pull Cord Removal

Step 1 Pull out the cord from the fixture.



Step 2 Release the hanging loop from the pull cord switch.



Battery Replacement

The mounting plate is provided for easier battery replacement. Please follow the steps below to insert/change the batteries.

Step 1 Take PCU-8 off the mounting plate.

Step 2 Unscrew the battery compartment cover.

Step 3 Take out the old batteries and press the Button a few times to fully drain the residual energy.

Step 4 Insert new batteries according to the polarity orientation.

Step 5 Re-place and screw the battery compartment cover.

Federal Communication Commission Interference Statement

This equipment has been tested and found to comply with the limits for a Class B digital device, pursuant to Part 15 of the FCC Rules. These limits are designed to provide reasonable protection against harmful interference in a residential installation.

This equipment generates, uses and can radiate radio frequency energy and, if not installed and used in accordance with the instructions, may cause harmful interference to radio communications. However, there is no guarantee that interference will not occur in a particular installation. If this equipment does cause harmful interference to radio or television reception, which can be determined by turning the equipment off and on, the user is encouraged to try to correct the interference by one of the following measures:

- Reorient or relocate the receiving antenna.
- Increase the separation between the equipment and receiver.
- Connect the equipment into an outlet on a circuit different from that to which the receiver is connected.
- Consult the dealer or an experienced radio/TV technician for help.

FCC Caution: To assure continued compliance, any changes or modifications not expressly approved by the party responsible for compliance could void the user's authority to operate this equipment. (Example – use only shielded interface cables when connecting to computer or peripheral devices).

FCC Radiation Exposure Statement

This equipment complies with FCC RF radiation exposure limits set forth for an uncontrolled environment. This

equipment should be installed and operated with a minimum distance of 20 centimeters between the radiator and your body.

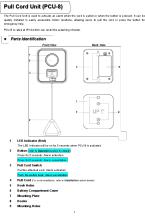
This transmitter must not be co-located or operating in conjunction with any other antenna or transmitter.

The antennas used for this transmitter must be installed to provide a separation distance of at least 20 cm from all persons and must not be co-located or operating in conjunction with any other antenna or transmitter.

This device complies with Part 15 of the FCC Rules. Operation is subject to the following two conditions:

(1) This device may not cause harmful interference, and (2) This device must accept any interference received, including interference that may cause undesired operation.

Documents / Resources

	<p>climax Technology PCU-8 Pull Cord Unit Alarm [pdf] Instruction Manual PCU-8, PCU-8 Pull Cord Unit Alarm, Pull Cord Unit Alarm, Cord Unit Alarm, Unit Alarm, Alarm</p>
---	--

References

- [User Manual](#)

[Manuals+.](#) [Privacy Policy](#)

This website is an independent publication and is neither affiliated with nor endorsed by any of the trademark owners. The "Bluetooth®" word mark and logos are registered trademarks owned by Bluetooth SIG, Inc. The "Wi-Fi®" word mark and logos are registered trademarks owned by the Wi-Fi Alliance. Any use of these marks on this website does not imply any affiliation with or endorsement.