

## ClimaRad Vita H1C Device Instructions

[Home](#) » [climaRAD](#) » ClimaRad Vita H1C Device Instructions 

### Contents

- [1 ClimaRad Vita H1C Device](#)
- [2 Operating principle ClimaRad Vita H1C](#)
- [3 Operating the ClimaRad Vita H1C](#)
- [4 Function Keys](#)
- [5 Messages](#)
- [6 Switch off](#)
- [7 Documents / Resources](#)
- [8 Related Posts](#)

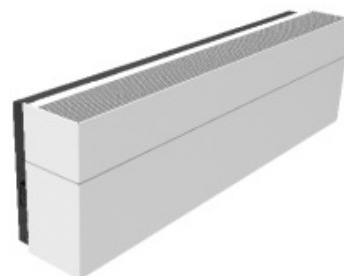


**ClimaRad Vita H1C Device**



## Operating principle ClimaRad Vita H1C

The ClimaRad Vita H1C device creates the optimum temperature and air quality by heating, cooling, and ventilating with air filtration and heat recovery. The built-in heat exchanger ensures that hardly any heat is lost when ventilating with outside air.



## Operating the ClimaRad Vita H1C

The control panel is located on the top of the device.



## Control panel

- The ClimaRad Vita H1C in your room is adjusted optimally by the installer and works completely automatically.
- This is why we will only explain the function buttons that are relevant for you in daily use.

## Function Keys



**AUTO**

Automatic control. The ventilation/heating/cooling in the room is controlled automatically by your ClimaRad ventilation unit, which works based on CO measurement.



**AUTO**

Use the **AUTO +** or **AUTO -** button combinations to set the desired default temperature of your room. This will temporarily disable the automatic control. After a period of 4 hours, your ClimaRad will switch back to automatic control.

You can adjust the desired speed for heating or cooling with the + and the - on your control panel.



**Pause.** Use this function when you temporarily do not wish to ventilate/heat/cool. After a period of 4 hours, your ClimaRad will switch back to automatic control.



**Maximum.** Your ClimaRad will function in the maximum setting. For ventilation, this function can be used to expel unpleasant odors such as smoke or cooking smells. After a period of 4 hours, your ClimaRad will switch back to automatic control.



**Ventilation with cooler outside air.** Your ClimaRad ventilates with outside air when it is a minimum of 2 degrees colder than the air in your room. After a period of 8 hours, your ClimaRad will switch back to automatic control. You can control the speed with the + and -. For example, use this function in the summer when you want to lower the temperature in your warmed room by several degrees.



**Child lock.** This button combination locks your control panel. Press the indicated buttons simultaneously for 4 seconds. Repeat this action if you want to unlock the control panel.

## Messages



**Child lock.** The child lock is activated.





**Error.** A fault has occurred. Please contact your installer or housing corporation.

**Dirty filter.** Replace the air filters or contact your installer or housing corporation. After replacing the filters, press the + and - buttons for 6 seconds.


## Switch off

   Press 4 seconds simultaneously

  Press for 6 seconds

- **ClimaRad B.V.** – Lübeckstraat 25 – 7575 EE – Oldenzaal – NL – [info@climarad.com](mailto:info@climarad.com) – [www.climarad.co.uk](http://www.climarad.co.uk) – tel. +31 541 358130

## Documents / Resources

	<p><a href="#">ClimaRad Vita H1C Device</a> [pdf] Instructions Vita H1C, Device, Vita H1C Device</p>
---	--