



# ClimaRad Sensa Horizontal Instruction Manual

[Home](#) » [climaRAD](#) » ClimaRad Sensa Horizontal Instruction Manual 

## Contents

- [1 ClimaRad Sensa Horizontal](#)
- [2 Maintenance frequency for filters](#)
- [3 Cleaning/replacing filters](#)
- [4 Documents / Resources](#)
  - [4.1 References](#)
- [5 Related Posts](#)

**ClimaRad**<sup>®</sup>

**ClimaRad Sensa Horizontal**



## Maintenance frequency for filters

### When should you replace the filters?

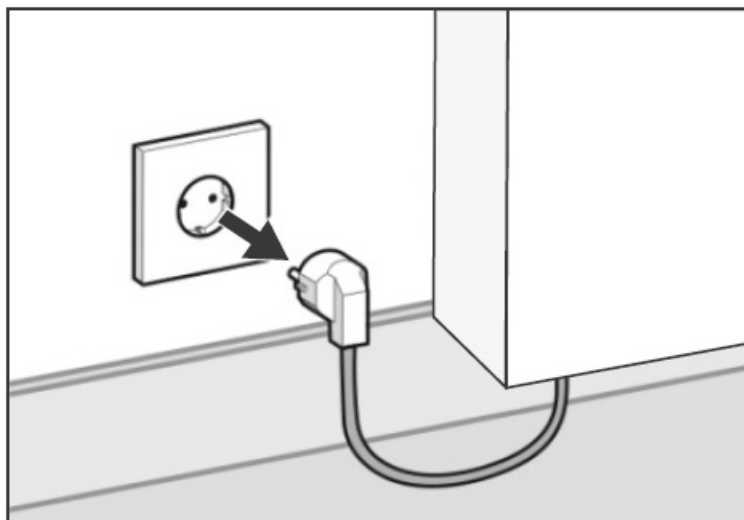
- With normal use, every 2 years or earlier if the message 'Filter vervuild' appears on the display (for example in homes and offices).
- In the case of intensive use, after 1 year or earlier if the message 'Filter vervuild' appears on the display (e.g. for care homes and schools).

### Ordering filters

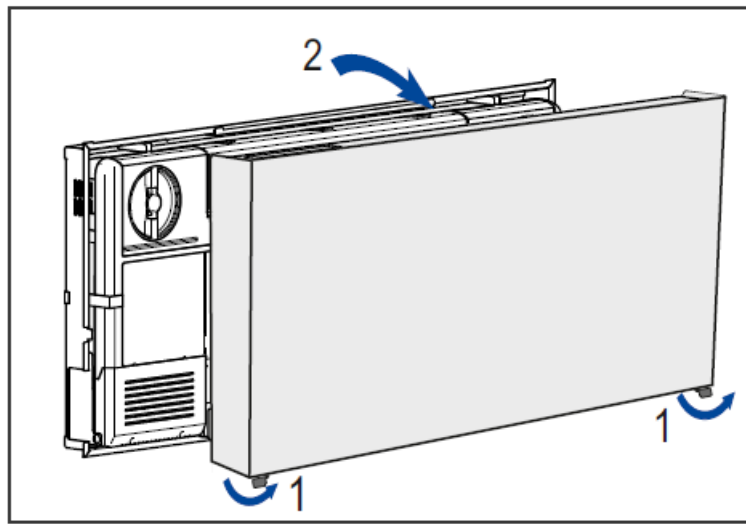
Order new filters at [www.climarad.nl/filters](http://www.climarad.nl/filters).

### Cleaning/replacing filters

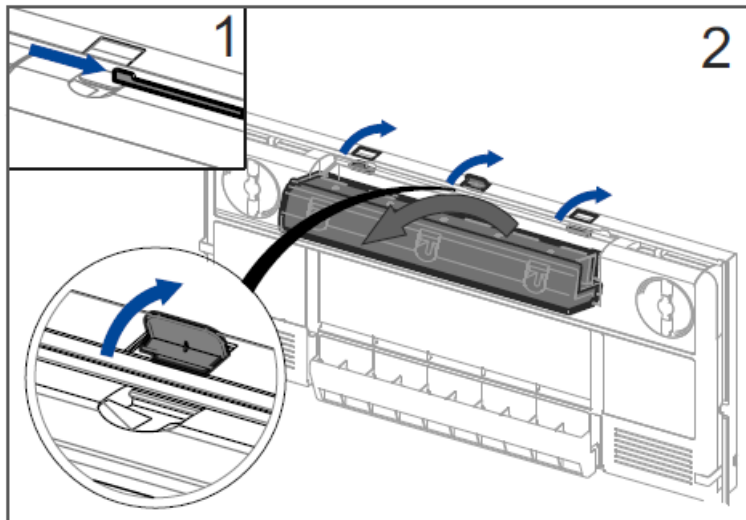
1. Switch off the device first by removing the plug from the socket.



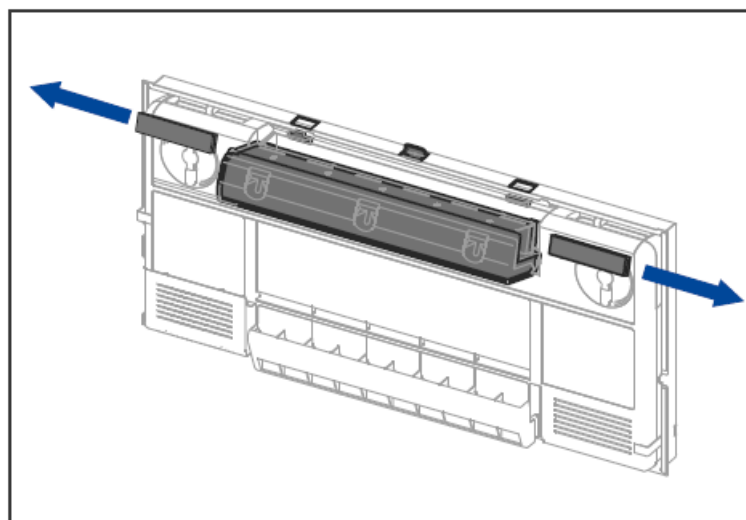
2. Turn the two locking hooks (at the bottom or on the side of the housing). Remove the cover of the Sensa by lifting it upwards.



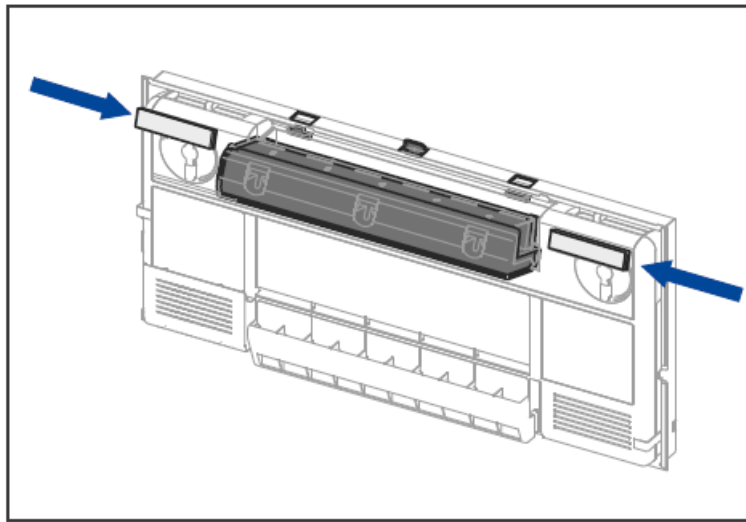
3. Replace the air supply filters. 1. Slide the cover to the right; the clips are now visible. 2. Open the three clips on the top and tilt the filter housing forwards.



4. Slide the two contaminated filters to the sides out of the filter housing.

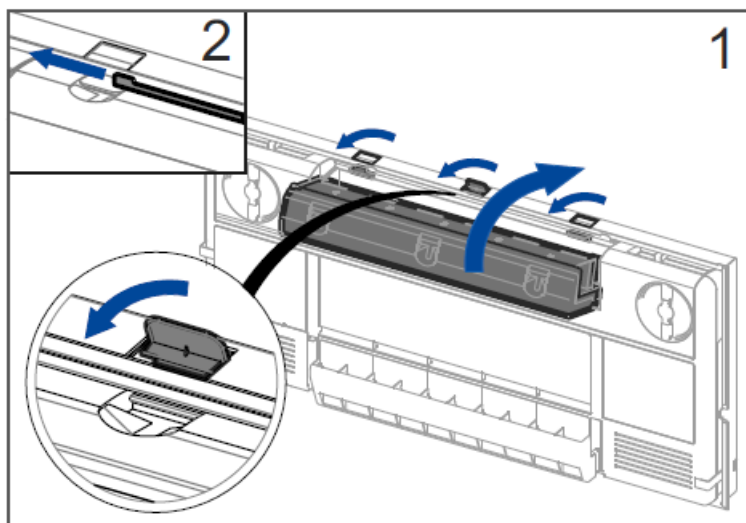


5. Slide the two new filters fully into the filter housing so that they do not project.

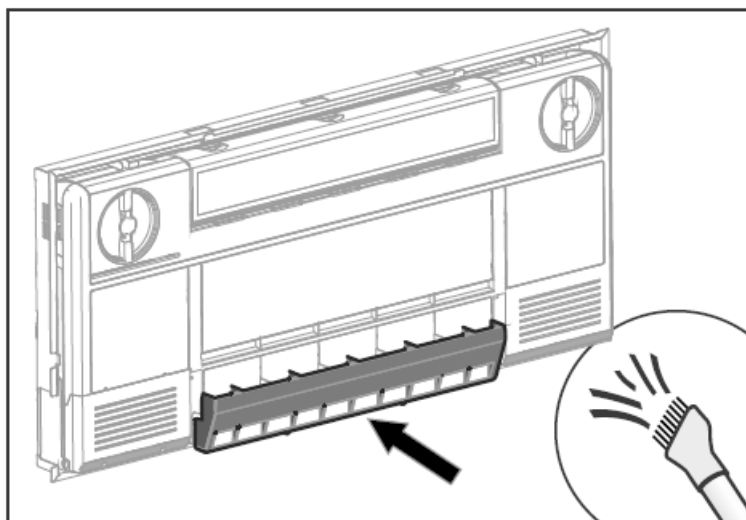


6. Close the filter housing and secure with the three clips. Caution: The filters must not protrude out of the filter housing.

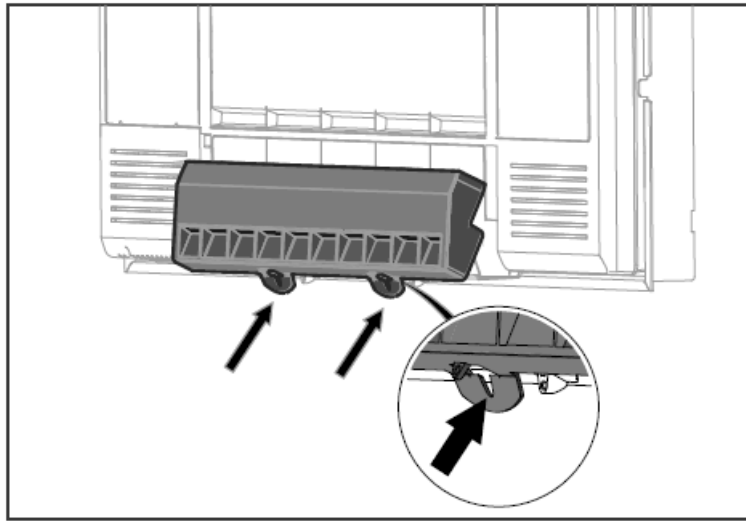
Slide the cover to the left to close.



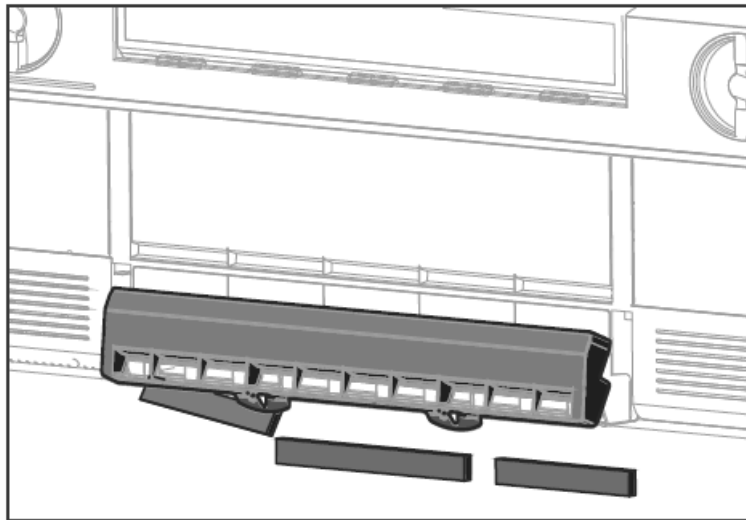
7. Cleaning the air outlet filters. When the air outlet filters are only slightly dirty, cleaning them with a vacuum cleaner is sufficient and you do not need to remove the air outlet filter.



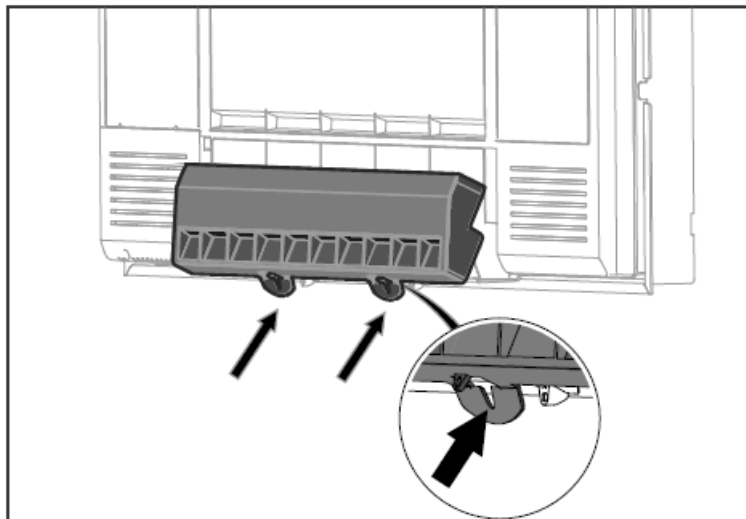
8. Replacing the air outlet filters. When the air outlet filters are dirty you need to unlock the filter housing by gently pulling the two clips towards you. Turn the filter grille as far forward as possible.



9. Push the filters from the front out of the filter housing. Place the three new filters in the sections.

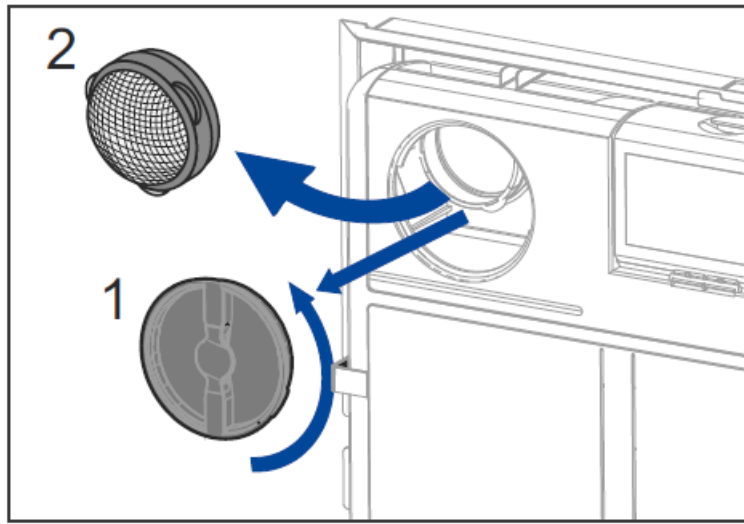


10. Press the grille at the bottom with the two clips firmly closed until you feel it snap. Please note that the filter housing must be properly closed for proper operation.

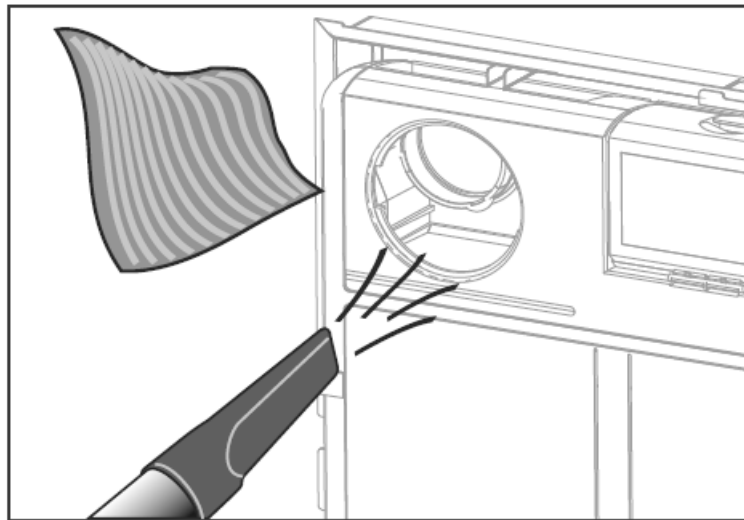


#### 11. Cleaning the air ducts

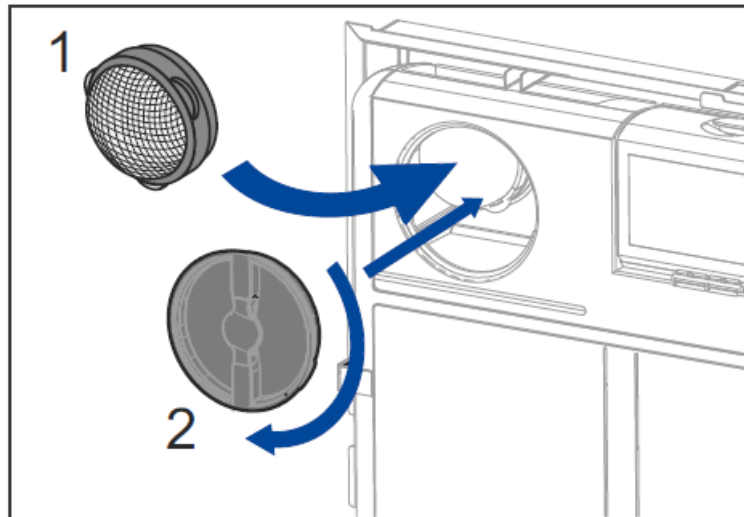
1. Remove the two inspection hatches by turning them to the left and removing them.
2. Remove the round cups from the air duct, and remove the dust and dirt from the insect mesh.



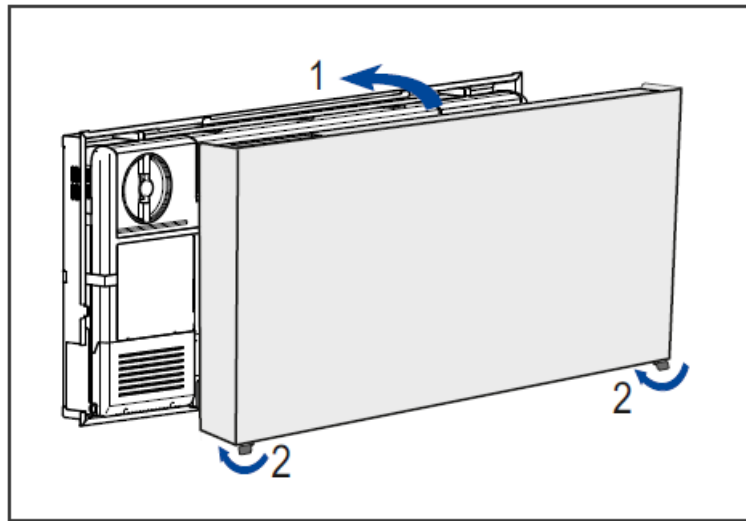
12. Remove any dirt from both channels with a vacuum cleaner or a soft cloth (do not use water).



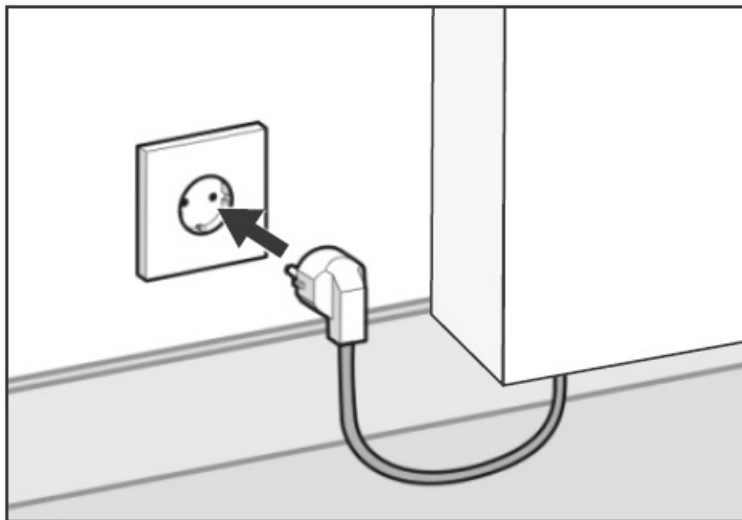
13. Insert the round cups. Install both inspection hatches and tighten them well for a correct operation.



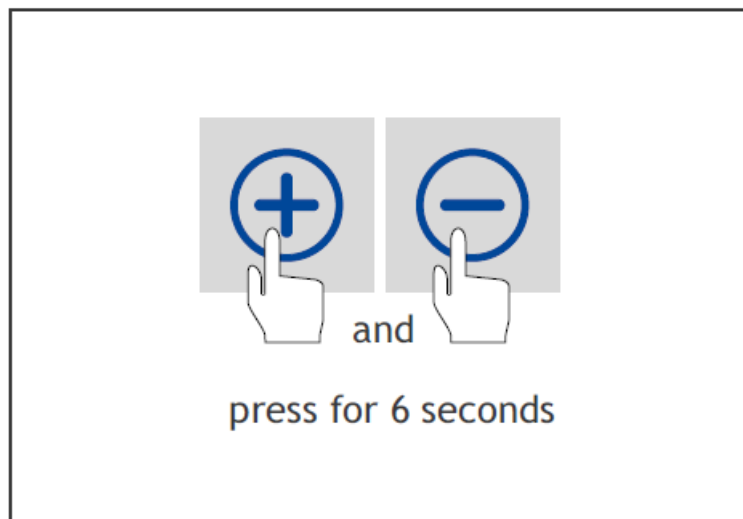
14. Put the cover back on and turn the locking hooks (at the bottom or on the side of the housing).



15. Push the plug back into the socket.



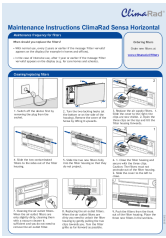
16. Reset the filter hour counter by simultaneously pressing on the + and – on the display for 6 seconds. The message 'Filter vervuild' will disappear.



**Important:** Reset the filter hour counter only if you have replaced the filters.

ClimaRad B.V. – Lübeckstraat 25 – 7575 EE – Oldenzaal – NL – [info@climarad.com](mailto:info@climarad.com) – [www.climarad.co.uk](http://www.climarad.co.uk) – tel. +31 541 358130.

**Documents / Resources**



[ClimaRad Sensa Horizontal](#) [pdf] Instruction Manual  
Sensa Horizontal, Sensa

## References

- [Webshop | ClimaRad](#)

Manuals+.