



Clevy 102687 Bluetooth Keyboard Instructions

[Home](#) » [Clevy](#) » Clevy 102687 Bluetooth Keyboard Instructions 



Clevy Bluetooth Keyboard
Windows 10



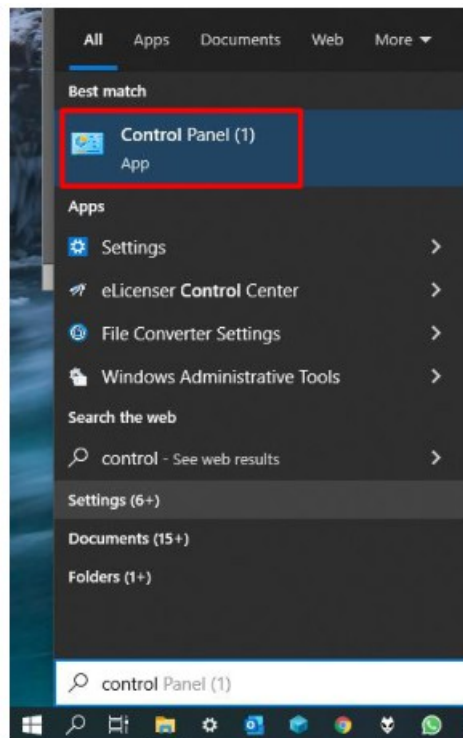
Contents

- [1 Pairing solution](#)
- [2 Documents / Resources](#)
- [3 Related Posts](#)

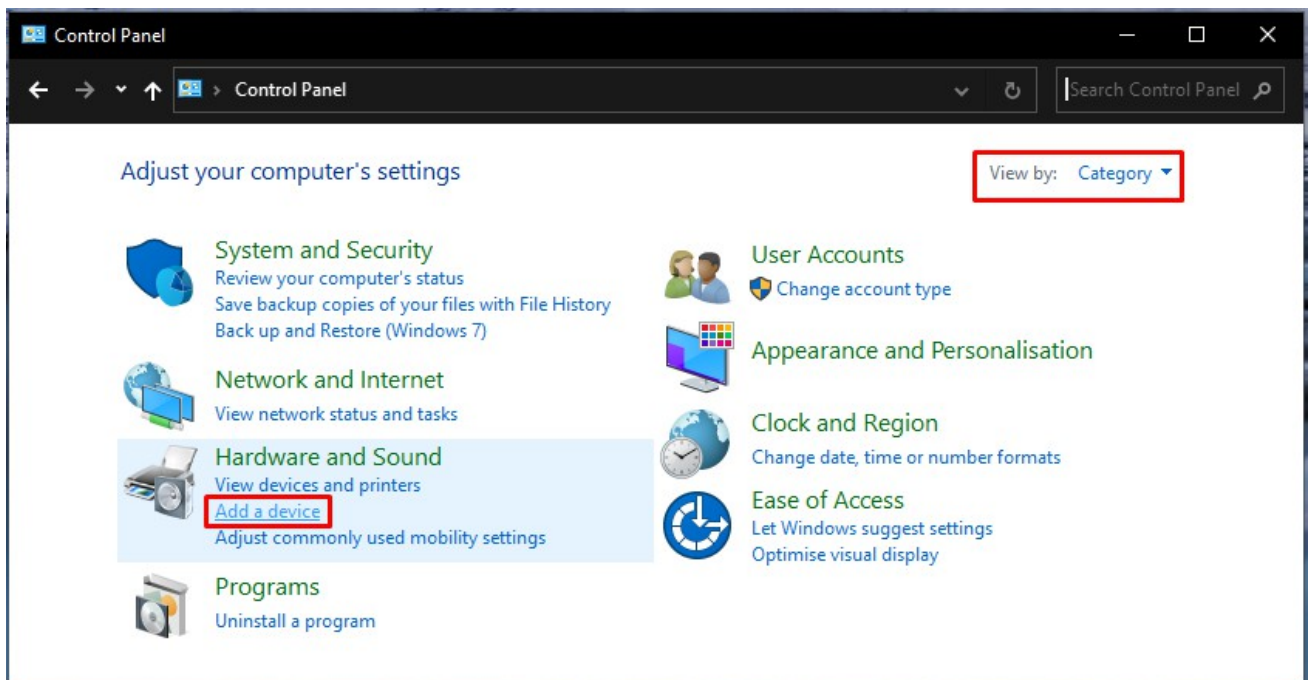
Pairing solution

Are you having problems (re)connecting the Clevy Bluetooth Keyboard to your Windows device? Here is a solution to get a new passcode to get your Clevy Keyboard reconnected.

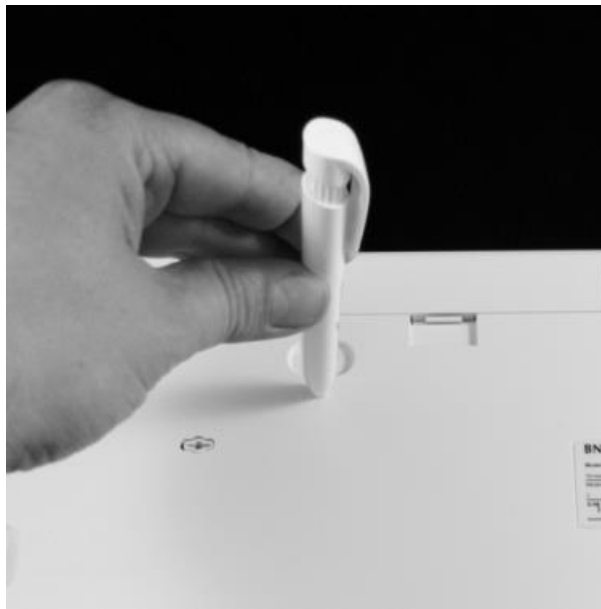
1.



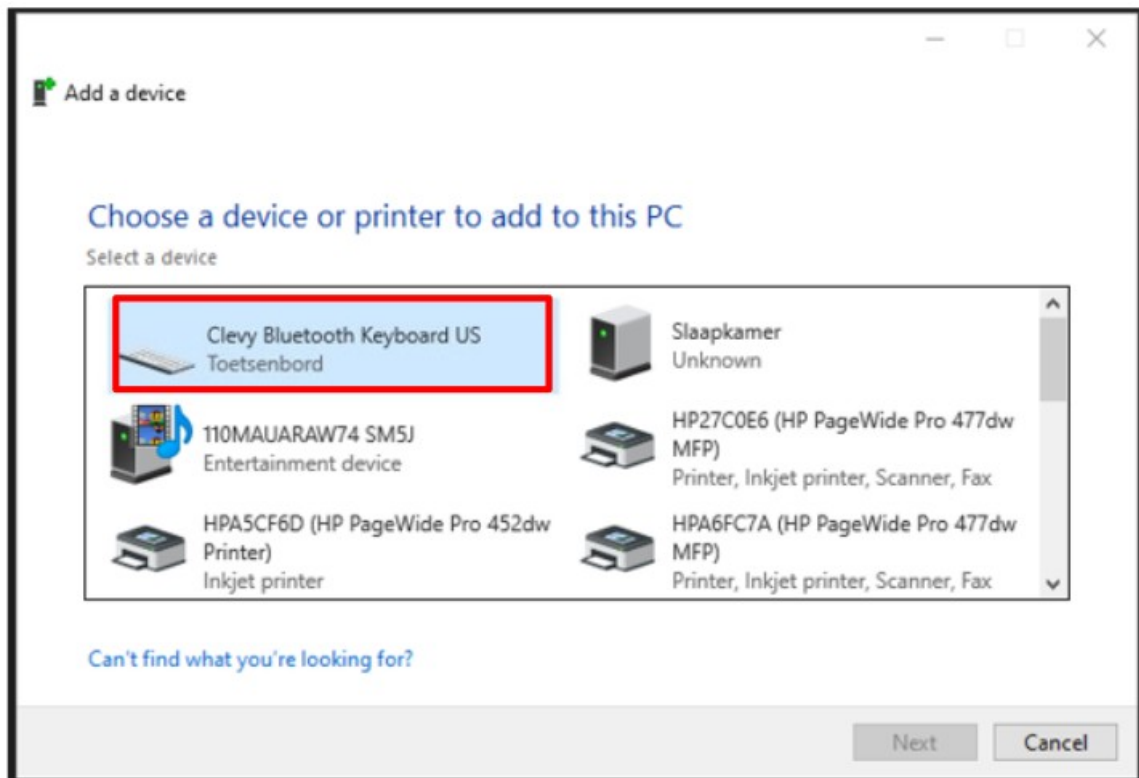
Open the Control Panel in Windows 10.



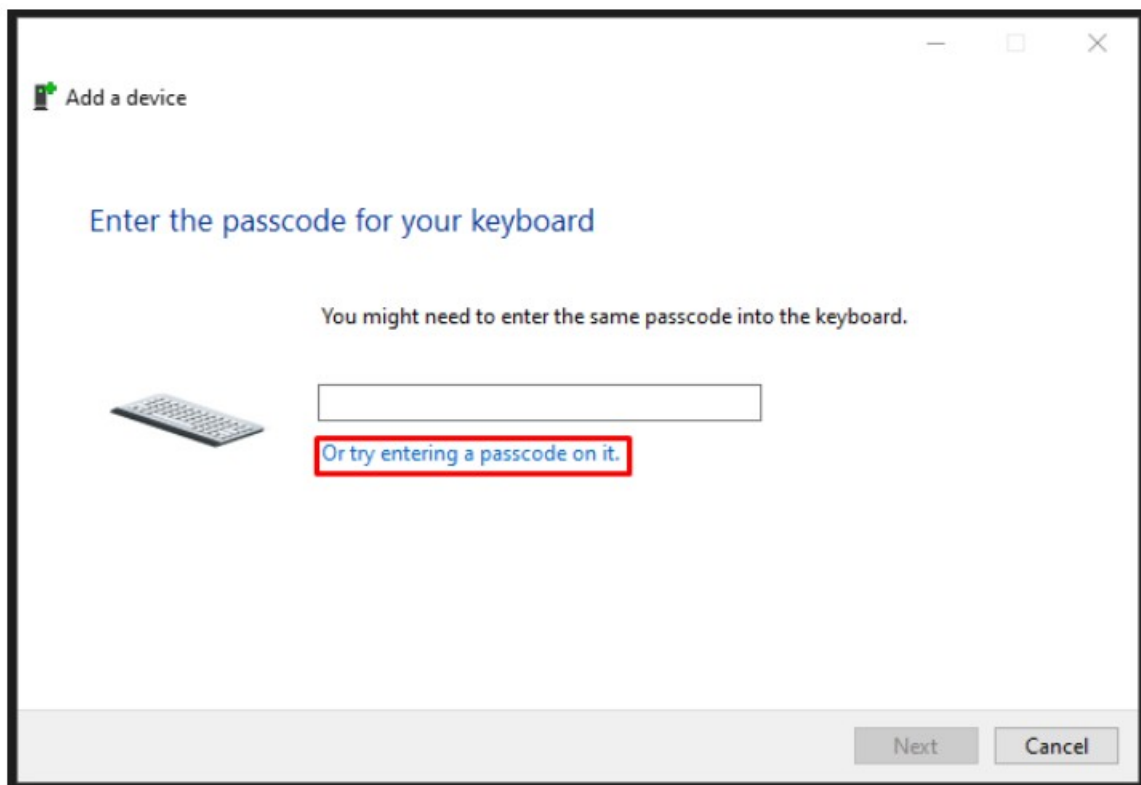
2. Select “View by: Category,” and click “Add a device” under “Hardware and Sound”.



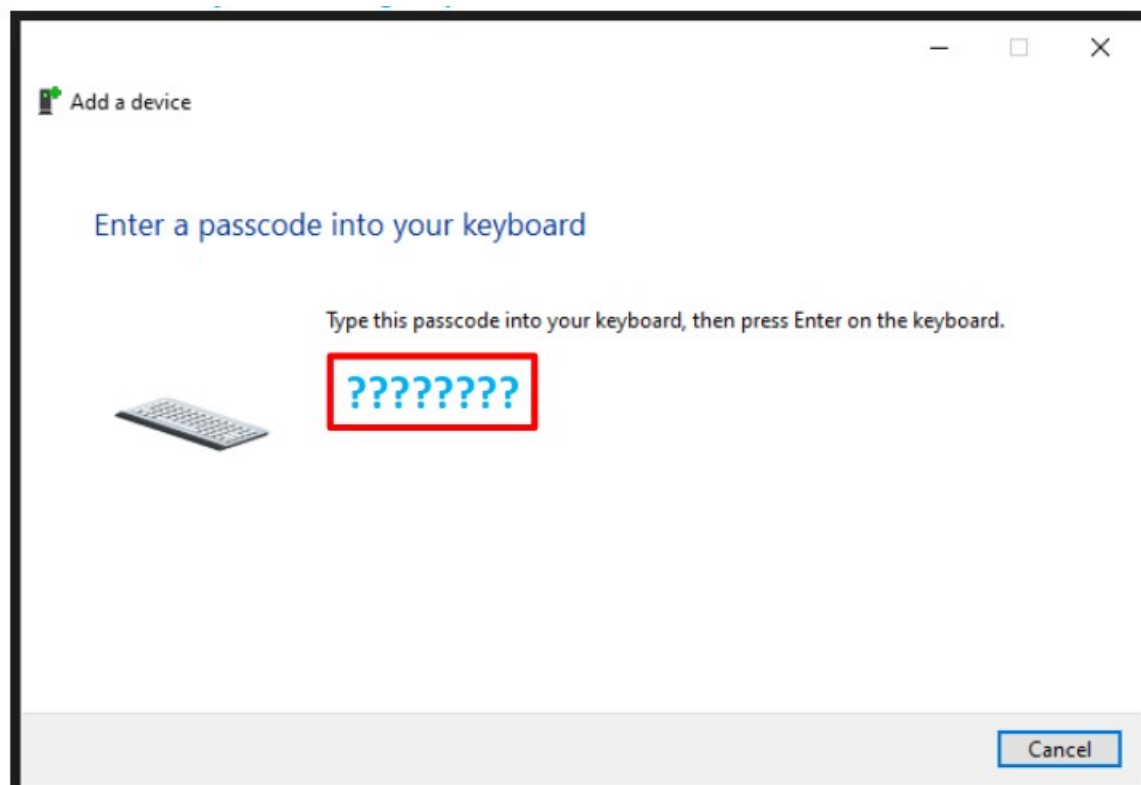
3. Press the Bluetooth pairing button on the backside of the Clevy Keyboard. The left blue led light (on the front of the Clevy Keyboard) is now blinking.



4. Clevy Bluetooth Keyboard shows up in this window. Select "(Clevy Bluetooth Keyboard" and click Next"



5. Click 'Or try entering a passcode on it'



6. Type the shown passcode into the Clevy Keyboard and then press Enter on the Clevy on the Clevy Keyboard.

7. The Clevy Keyboard is now paired and connected to your device.

Documents / Resources



Are you having problems re/connecting the Cherry Bluetooth keyboard to your Windows device? Here is a tutorial to get a new passcode to get your Cherry Bluetooth reconnected.

Manuals+,