



clearaudio Speed Light V2 Strobe Light Optimal Turntable Speed User Manual

[Home](#) » [clearaudio](#) » clearaudio Speed Light V2 Strobe Light Optimal Turntable Speed User Manual 

Contents

- 1 clearaudio Speed Light V2 Strobe Light Optimal Turntable Speed
- 2 Product Information
- 3 Product Usage Instructions
- 4 FAQ (Frequently Asked Questions)
- 5 Safety instructions
- 6 Included accessories
- 7 Usage of the Speed Light V2
- 8 Opening the housing
- 9 Technical data
- 10 ABOUT COMPANY
- 11 Documents / Resources
 - 11.1 References
- 12 Related Posts



clearaudio Speed Light V2 Strobe Light Optimal Turntable Speed



Product Information

Specifications:

- **Brand:** Clearaudio
- **Model:** Speed Light V2
- **Origin:** Made in Germany
- **Power Source:** Batteries or continuous power via microUSB (cable not included)

Product Usage Instructions

Safety Instructions:

1. **General Information:** Ensure battery voltage is sufficient for accurate measurements. Avoid staring into the LED light beam for prolonged periods.
2. **Transportation:** Always use the original packing material for transportation needs.
3. **Service:** Contact dealer, distributor, or Clearaudio directly for servicing or repairs.
4. **Disposal:** Do not dispose of the product with household waste. Follow WEEE regulations for proper disposal.

Included Accessories:

To use the Speed Light V2, you need a stroboscope LP. Additional analogue accessories are available at www.analogshop.de.

Usage of the Speed Light V2:

1. The Speed Light V2 is ready for use with installed batteries or continuous power via microUSB.
2. Place the stroboscope test record on your turntable, switch it on at the speed to be checked.

Note: The Speed Light V2 does not have a rechargeable battery. Operation is only possible via battery or continuous current.

Speed Calibration:

When the stroboscope lines stop in the white light and do not move visibly, you have achieved optimal speed (33 1/3rpm outer ring, 45rpm inner ring).

- If lines move clockwise, speed is too fast.
- If lines move anti-clockwise, speed is too slow.
- If light intensity reduces, change the battery or switch to continuous power.

Opening the Housing:

Using the allen key provided, loosen the four screws on top of the device and remove the cover for maintenance purposes.

FAQ (Frequently Asked Questions)

• Can I use rechargeable batteries with the Speed Light V2?

No, the Speed Light V2 does not support rechargeable batteries. It operates on standard batteries or continuous power via microUSB.

• How do I know if my turntable speed is correct using the Speed Light V2?

Place the stroboscope test record on your turntable, ensure the stroboscope lines stop in the white light without visible movement for optimal speed calibration.

Dear Clearaudio customer,

- Thank you for choosing a high-quality product from Clearaudio electronic GmbH.
- With the Clearaudio Speed Light V2 you have a valuable tool to achieve the perfect speed setting for your turntable.

Please note:

- This user manual gives you valuable information on how to use your Speed Light V2 correctly.
- We thank you for your trust and wish you a lot of joy.
- Clearaudio electronic GmbH

Safety instructions

1. General information

A battery voltage that is too low can lead to erroneous measurement results, even if the LED is still shining due to the residual voltage. Replace the battery or switch to continuous power.

Please note:

The built-in LED is not a laser diode. Nevertheless, please do not stare into the light beam for a long time, as it has a high luminosity.

2. Transportation

Should further transportation be necessary, please always use the original packing material.

3. Service

If any servicing or repair of a Clearaudio product is necessary, please first contact your dealer or distributor.

Alternatively contact Clearaudio directly and we will inform you about your nearest service location.

PLEASE RETAIN ALL ORIGINAL PACKAGING.

You will need it if this product has to be transported and/or shipped. Any further questions you may have about this product should be directed to your local dealer.

4. Safety instructions

Disposal

- This product is not allowed to be disposed with household waste.
- WEEE Reg.No.: DE26004446

Included accessories

- Allen key
- User manual

Please note:

In order to use the Speed Light V2 , you need a stroboscope LP.

The following are recommended:

- Clearaudio Speed Strobe Test Record (Art. No. AC038)
- Clearaudio Multi Installation Gauge (Art. No. AC155)

More analogue accessories are available at: www.analogshop.de.

Usage of the Speed Light V2

- The Clearaudio Speed Light V2 is immediately ready for use with the batteries already installed or with continuous power via micro-USB (cable not included in the scope of delivery).

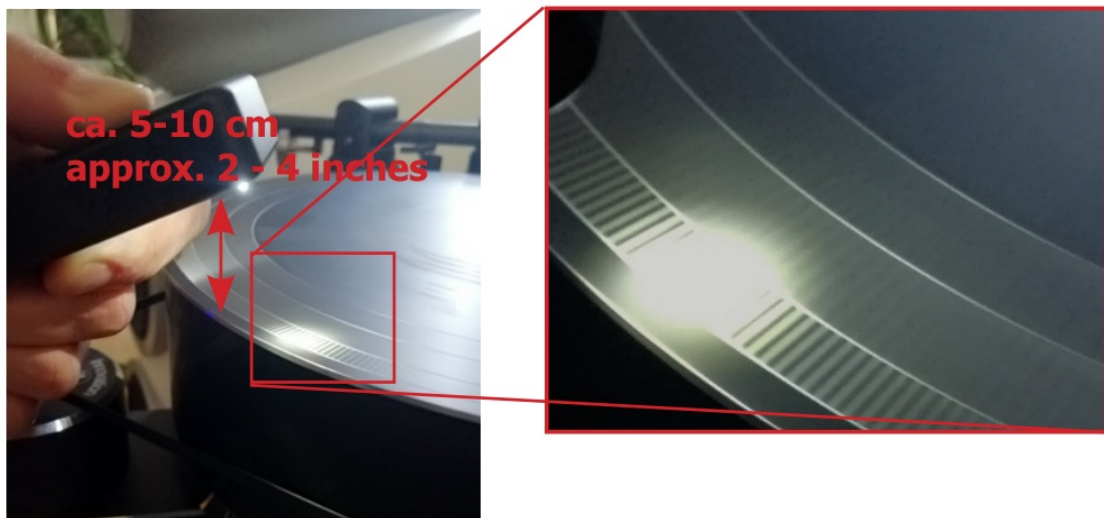


Pic. 1: Micro-USB for continuous current.

Please note:

The Speed Light V2 does not have a rechargeable battery. Operation only possible via battery or continuous current.

- Put the stroboscope test record on your turntable and switch the turntable on at the speed to be checked.
- To set the optimal speed for the turntable with the Speed Light V2, hold the Speed Light V2 about 2 – 4 inches (5 – 10 cm) over the Stroboscope Testrecord.



Pic. 2: Correct distance to the platter

- When the stroboscope lines stop in the white light and do not move visibly, you have the optimal speed (33 1/3rpm outer ring, 45rpm inner ring).
 - If the lines move clockwise, the speed is too fast.
 - If the lines move anti-clockwise, the speed is too slow.
- If the intensity of the light reduces, please change the battery, as described on the next page or switch to continuous current.

Opening the housing

- Using the allen key provided, loosen the four screws on top of the device and remove the cover.



Pic. 3: Opening the housing

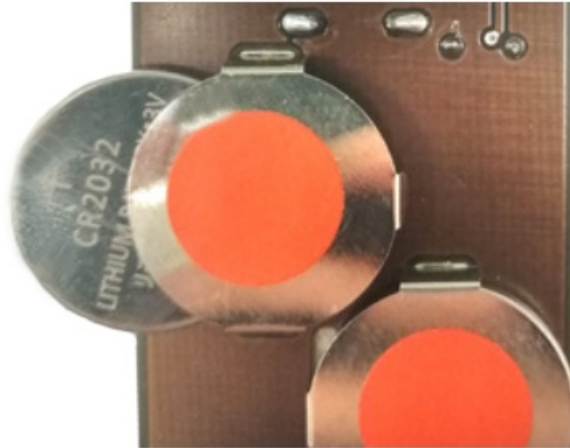


Pic. 4: Handle on the circuit board

- Remove the circuit board by lifting it out of the housing using the handle below the button. The batteries are

located on the backside of the circuit board.

When inserting the new batteries, make sure that the polarity is correct. (The “+” on the battery must face up.)



Pic. 5:
Inserting the batteries

Technical data

Material:	Anodized aluminum, Milled from solid material.
Light source:	White LED; calibrated to 300 Hz (for stroboscope LP).
Batteries:	2x CR2032 3V
USB connection:	Micro-USB

ABOUT COMPANY

- clearaudio electronic GmbH
- Spardorfer Straße 150
- 91054 Erlangen
- Germany
- **Phone** /Tel.: +49 9131 40300 100
- **Fax:** +49 9131 40300 119
- www.clearaudio.de
- www.analogshop.de
- info@clearaudio.de
- Handmade in Germany
- Clearaudio Electronic accepts no liability for any misprints.
- Technical specifications are subject to change or improvement without prior notice. Product availability is as long as stock lasts.

Documents / Resources



[clearaudio Speed Light V2 Strobe Light Optimal Turntable Speed](#) [pdf] User Manual
Speed Light V2 Strobe Light Optimal Turntable Speed, Speed Light V2, Strobe Light Optimal Turntable Speed, Light Optimal Turntable Speed, Optimal Turntable Speed, Turntable Speed

References

- [Oslo Sportslager - kvalitet - service - kunnskap i 90 år](#)
- [clearaudio analogshop](#)
- [clearaudio electronic GmbH | High End - made in Germany](#)
- [User Manual](#)

Manuals+, Privacy Policy

This website is an independent publication and is neither affiliated with nor endorsed by any of the trademark owners. The "Bluetooth®" word mark and logos are registered trademarks owned by Bluetooth SIG, Inc. The "Wi-Fi®" word mark and logos are registered trademarks owned by the Wi-Fi Alliance. Any use of these marks on this website does not imply any affiliation with or endorsement.