

CLEAR RATE uControl Fax Configuration User Guide

[Home](#) » [CLEAR RATE](#) » CLEAR RATE uControl Fax Configuration User Guide 

Contents

1

CLEAR RATE uControl Fax Configuration

2

Product Information

3

Product Usage Instructions

4

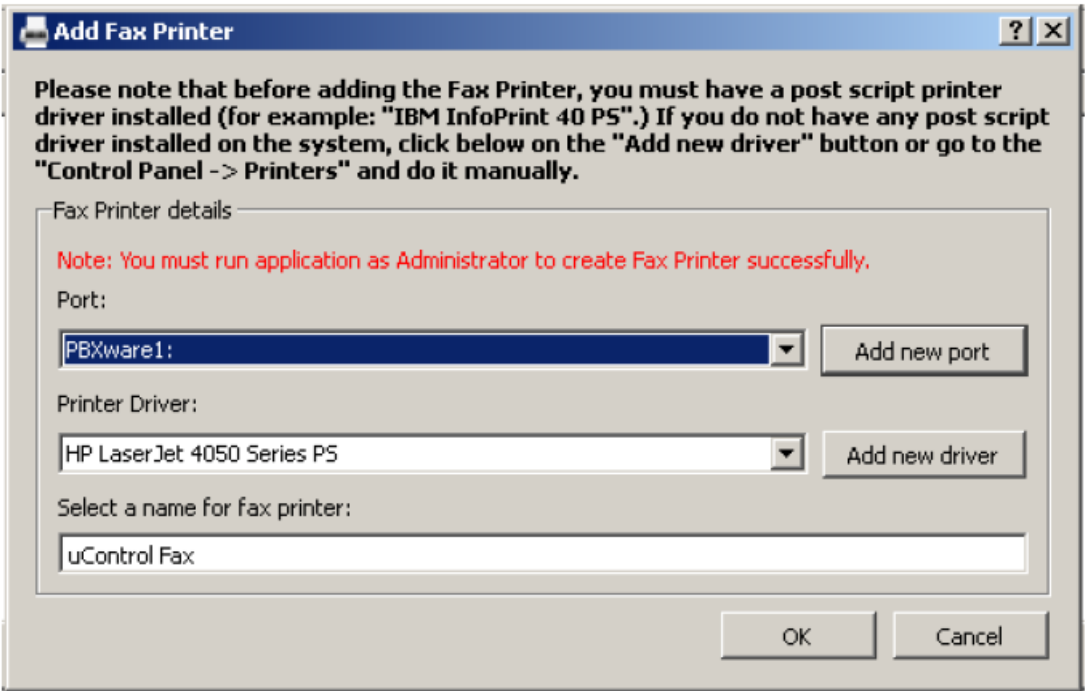
Documents / Resources

5

Related Posts



CLEAR RATE uControl Fax Configuration



Product Information

uControl Fax Configuration

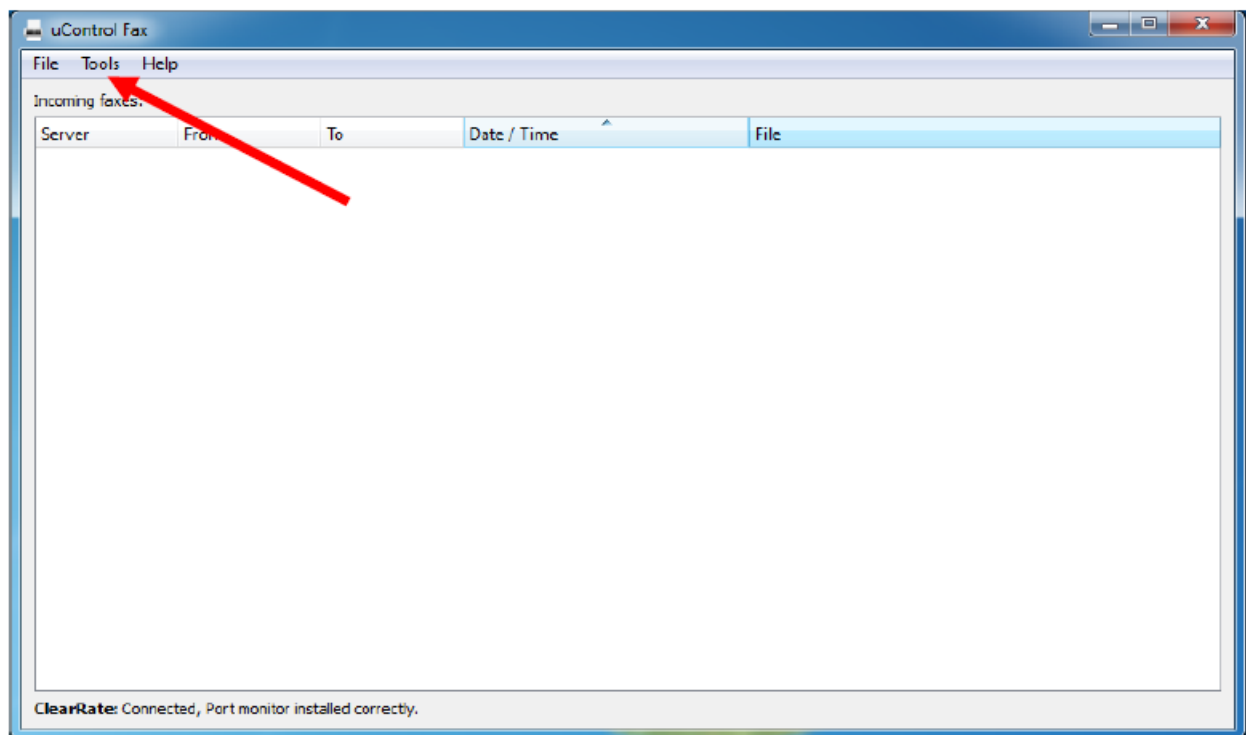
The uControl Fax Configuration allows users to send faxes from any printable program. The software agent can be downloaded from <http://www.clearrate.com/ucontrolfax.exe>. The product requires the user to have a PBXware1 listed in the dropdown list for Port and any postscript driver for the printer.

Product Usage Instructions

1. Download the software agent from <http://www.clearrate.com/ucontrolfax.exe>.
2. Install the software by double-clicking the downloaded application icon and following the defaults.
3. Open the application after installation.
4. Click on the Tools menu and select Settings in the software agent.
5. Within the settings menu, click the Add button.
6. Fill out the Server and Host information as provided by Clear Rate for each user. Test EXT is 106 / secret is 4oO2se8_Aw-NayGM.
7. Click Ok twice. You will return to the main software window.
8. In the lower left-hand corner of the window, it should now say 1. ClearRate: Connected, Port monitor installed correctly.
9. Add the fax printer driver by going back to the Tools menu and clicking Add Printer.
10. In the window that opens, verify you already have PBXware1 listed in the dropdown list for Port.
11. If not, click the add new port button.
12. Next, click the Add New Driver Button.
13. Choose HP or NRG as appropriate from the manufacturer list and then HP LaserJet 4050 Series PS or NRG MP 1100 PS from the printers list.
14. Click next and finish to complete adding the driver.
15. You should now have PBXware1 listed in the port dropdown list and NRG MP1100 PS or HP LaserJet 4050 Series PS in the driver dropdown list.
16. Make sure you click OK to actually add the printer, if cancel is hit then the printer will not be created.
17. To test your setup, open a Word document and type Test a few times then choose Print, and choose the uControl Fax printer that should be available in their list of printers now.
18. A window will pop up from the fax agent software prompting for the number to send to. You can use 10 digits (area code + number) or 1+ dialing (1+areacode+number), either works.
19. If you do not see the uControl Fax printer in your list of printers when you go to do test fax, go back into Tools and add the fax printer. Make sure the Port still says PBXWare1: and Printer Driver still says NRG MP1100 PS or HP LaserJet 4050 Series PS. Click OK and try your test fax again.

Download the software agent from <http://www.clearrate.com/ucontrolfax.exe>.

1. Install the software by double-clicking the downloaded application icon from Step 1.
 - Defaults are acceptable when installing.
2. After the software is installed, open the application.
3. Click on the Tools menu & then select Settings in the software agent.

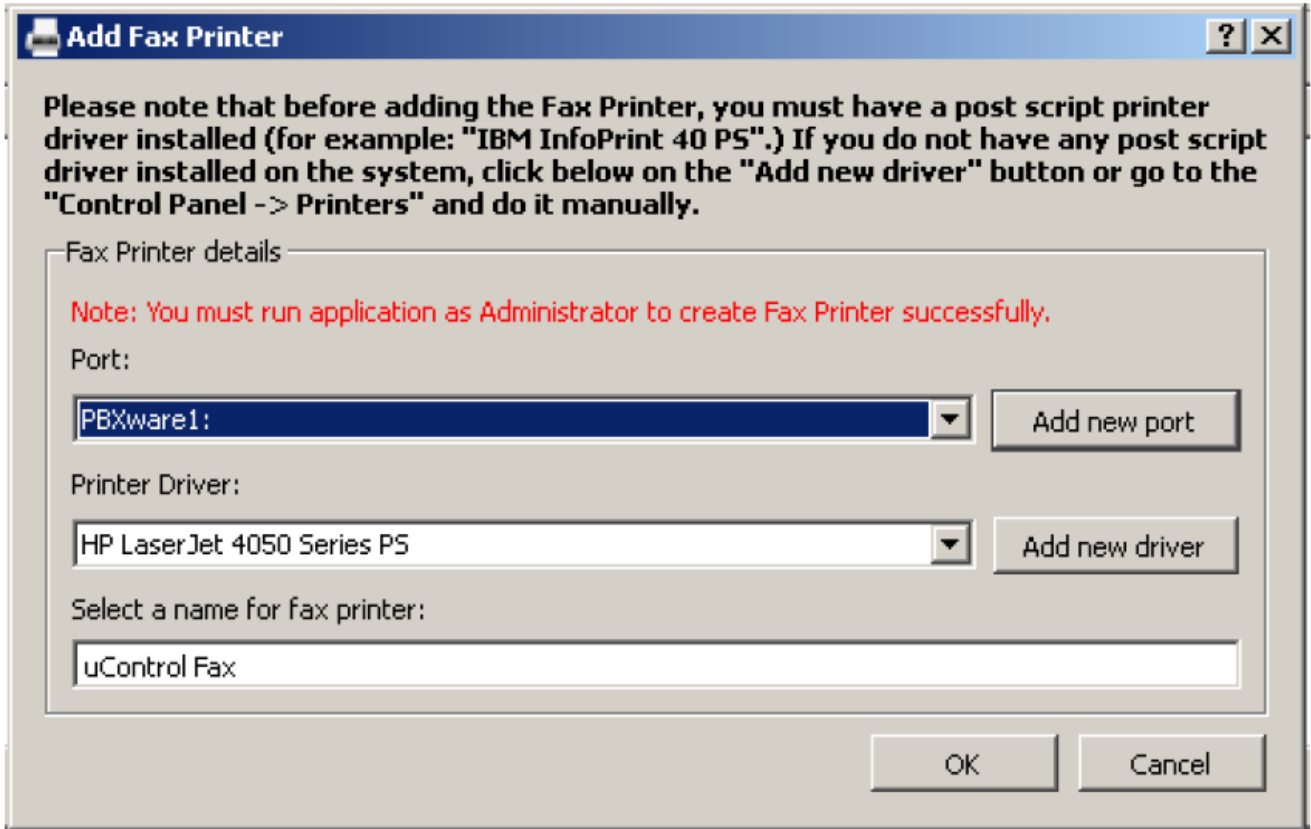


4. Within the settings menu click the Add button.
5. Fill out the Server & Host information as shown below:
 - The Extension and Secret will be provided by Clear Rate for each user.

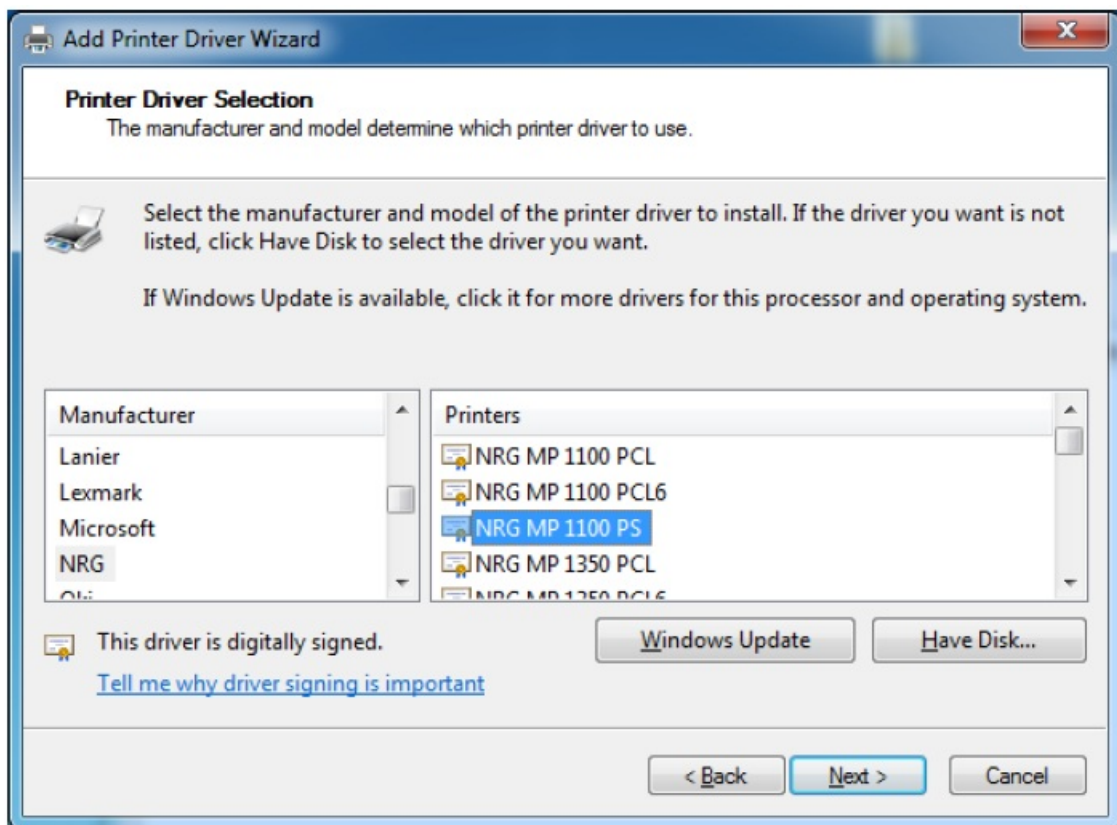
6. Test EXT is 106 / secret is 4oO2se8_Aw-NayGM Your EXT is SECRET is

7. Click Ok twice. You will return to the main software window.
8. In the lower left-hand corner of the window, it should now say

- "ClearRate: Connected, Port monitor installed correctly".
9. The next step is to add the fax printer driver
- This allows you to fax out from any printable program.
10. To do this: go back to the Tools menu & click Add Printer
- In the window that opens verify you already have PBXware 1 listed in the dropdown list for Port.
 - If not, click the "add new port" button.
11. Next, click the Add New Driver Button. (see screenshot below)



12. When you click add new driver the Windows add printer driver wizard will open.
- You can click next until you are given the Printer Driver Selection screen with a listing of available drivers on the system.
 - Any postscript driver should work.
 - We have found that the HP LaserJet 4050 Series PS driver works and appears to be available on all Windows XP installations, whereas the NRG MP 1100 PS appears to work on all Windows 7 installations.
 - Choose HP or NRG as appropriate from the manufacturer list and then HP LaserJet 4050 Series PS or NRG MP 1100 PS from the printers list as shown below:




13. Click next & finish to complete adding the driver

- This will bring you back to the add fax printer window.
- You should now have PBXware1 listed in the port drop-down list, and NRG MP1100 PS or HP Laserjet 4050 Series PS in the driver drop-down list.
- Make sure you click OK here to actually add the printer, if cancel is hit then the printer will not be created.

At this point, you should be configured correctly. To test your setup – open a Word document and type Test a few times then choose Print, and choose the uControl Fax printer that should be available in their list of printers now. A window will pop up from the fax agent software prompting for the number to send to. You can use 10 digits (area code + number) or 1+ dialing (1+areacode+number), either works. If you do not see the uControl Fax printer in your list of printers when you go to do test fax, go back into Tools → add fax printer. Make sure the Port still says “PBXWare1:” and Printer Driver still says NRG MP1100 PS or HP LaserJet 4050 Series PS. Click OK & try your test fax again. If after configuring the software agent and attempting a test fax you are given the message “it appears fax agent is not running or running under a different privilege level...etc”, File→Exit from the fax agent, and verify there are no other instances of the fax agent running by checking the taskbar and verifying there are no other instances present. Then re-open the fax agent and try again.

Documents / Resources

	<p>CLEAR RATE uControl Fax Configuration [pdf] User Guide uControl Fax, Configuration, uControl Fax Configuration</p>
---	--