



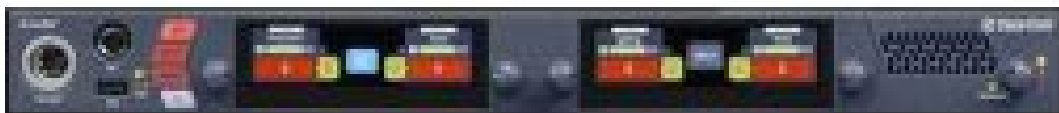
Clear-Com 1410 Base Station Central Station Main Station User Guide

[Home](#) » [Clear-Com](#) » Clear-Com 1410 Base Station Central Station Main Station User Guide 

Contents

- [1 Clear-Com 1410 Base Station Central Station Main Station User Guide](#)
- [2 14 Regulatory compliance](#)
- [3 14.1 FCC Notice](#)
- [4 14.3 Industry Canada Compliance Statement](#)
- [5 14.6 European Union \(CE mark\)](#)
 - [5.1 Directives:](#)
- [6 Read More About This Manual & Download PDF:](#)
- [7 Documents / Resources](#)
- [8 Related Posts](#)

Clear-Com 1410 Base Station Central Station Main Station User Guide



Applicant Name: Clear-Com LLC

Applicant Address: 1301 Marina Village Pkwy, Suite 105, Alameda CA 94501, United States

Manufacturer Name: Clear-Com LLC

Manufacturer Address: 1301 Marina Village Pkwy, Suite 105, Alameda CA 94501, United States

Country of Origin: USA

Brand: Clear-Com

Caution: All products are compliant with regulatory requirements detailed in this document when the user follows all installation instructions and operating conditions per Clear-Com specifications

Caution: Use of accessories and peripherals other than those recommended by Clear-Com may void the product's compliance as well as the user's authority to operate the equipment.

14.1 FCC Notice

This device complies with Part 15 of the FCC rules. Operation is subject to the following two conditions: (1) This device may not cause harmful interference, and (2) This device must accept any interference received, including interference that may cause undesired operation.

NOTE: This equipment has been tested and found to comply with the limits for a Class A digital device, pursuant to Part 15 of the FCC rules. These limits are designed to provide reasonable protection against harmful interference when the equipment is operated in a commercial environment. This equipment generates, uses and can radiate radio frequency energy and, if not installed and used in accordance with the instruction manual, may cause harmful interference to radio communication. Operation of this equipment in a residential area is likely to cause harmful interference, in which case the user will be required to correct the interference at his own expense. Changes or modifications not expressly approved by Clear-Com, LLC, an HM Electronics, Inc. company could void the user's authority to operate this equipment.

14.3 Industry Canada Compliance Statement

This Class[A] digital device complies with Canadian ICES-003.

14.6 European Union (CE mark)

The CE marking indicates compliance with the following directives and standards, whenever applicable to the product in question.

Directives:

-Radio Equipment Directive 2014/53/EU

-Electromagnetic Compatibility Directive 2014/30/EU

-Low Voltage Directive 2014/35/EU

– RoHS Directive 2011/65/EU, 2015/863/EU

Standards:

– EN55032

– EN55035

– IEC/EN62368-1

-EN300328

-EN301489

-EN50581

1.10 United Kingdom (UKCA Mark)

The UKCA (UK Conformity Assessed) marking is a new UK product marking that will be used for goods being placed on the market in Great Britain (England, Wales and Scotland). The UKCA marking alone cannot be used for goods placed on the Northern Ireland market, which require the CE

marking or UK(NI) marking.

Warning: This is a Class A product. In a domestic environment this product may cause radio interference in which case the user may be required to take adequate measures.

14.7 Electrical and Electronic Equipment (WEEE)

The European Union (EU) WEEE Directive (2012/19/EU) places an obligation on producers (manufacturers, distributors and/or retailers) to take-back electronic products at the end of their useful life. The WEEE Directive covers most Clear-Com products being sold into the EU as of August 13, 2005. Manufacturers, distributors and retailers are obliged to finance the costs of recovery from municipal collection points, reuse, and recycling of specified percentages per the WEEE requirements.



Instructions for Disposal of WEEE by Users in the European Union

The symbol shown below is on the product or on its packaging which indicates that this product was put on the market after August 13, 2005 and must not be disposed of with other waste. Instead, it is the user’s responsibility to dispose of the user’s waste equipment by handing it over to a designated collection point for the recycling of WEEE. The separate collection and recycling of waste equipment at the time of disposal will help to conserve natural resources and ensure that it is recycled in a manner that protects human health and the environment. For more information about where you can drop off your waste equipment for recycling, please contact your local authority, your household waste disposal service or the seller from whom you purchased the product.

Read More About This Manual & Download PDF:

Documents / Resources

| | |
|--|---|
| | <p>Clear-Com 1410 Base Station Central Station Main Station [pdf] User Guide 1410, BYM1410, 1410, Base Station Central Station Main Station</p> |
|--|---|