



CR2M Clean Remote Universal Instruction Manual

[Home](#) » [CLEAN REMOTE](#) » CR2M Clean Remote Universal Instruction Manual 

Contents

- [1 CR2M Clean Remote Universal](#)
- [2 Product Information](#)
- [3 Product Usage Instructions](#)
- [4 Battery Installation](#)
- [5 TV Only Setup Instructions](#)
- [6 Troubleshooting TV Only Setup](#)
- [7 Setup](#)
- [8 Cruise Line TV Systems Setup](#)
- [9 Documents / Resources](#)
- [10 Related Posts](#)



CR2M Clean Remote Universal



Product Information

- The CR2M is a remote control device designed for controlling TVs, specifically for TV systems on cruise ships. It requires 2 AAA batteries for operation.
- The remote control features a keypad with a dark lens cover and a lid at the back for battery installation. It also has LED indicators to provide feedback on the battery status.
- The CR2M remote control comes with an optional screw for the battery compartment, which can be found in the package.

Product Usage Instructions

Battery Installation

1. Looking at the keypad, slide the dark lens cover away from you (STEP 1) and lift the lid from the back (STEP 2).
2. Install 2 AAA batteries. Ensure that the + and – symbols on the metal hinge of the battery compartment correspond with the + and – ends of each battery.
3. With the keypad facing away from you, close the cover by gently pressing it down (STEP 1) and sliding it until it aligns with the front (keypad) of the device (STEP 2).
4. Test the remote by pressing the power button. The LED should light up, indicating that the batteries are correctly inserted. If the LED fails to light up, check if the batteries are incorrectly inserted or dead.

TV Systems Setup

Note: The following instructions are for setting up the remote control with different types of TV systems.

TV Only Setup

1. With the TV ON, point the remote control at the TV's front panel (stand at least 5 feet away from the TV for best results).
2. Press and firmly hold down the SETUP button. Do not release. The LED on the remote control will blink once and then, after 7 seconds, begin searching for your TV's code. The LED will blink every few seconds as it searches.
3. Release the SETUP button as soon as your TV shuts OFF to lock in the code.
4. Test the remote by using the power, volume, and channel buttons. If all functions work correctly, the setup is complete. If not, repeat the code search procedure above to find an exact code match for your TV model.

Cruise Line TV Systems Setup

1. With the TV ON, point the remote control at the TV's front panel (stand at least 5 feet away from the TV for best results).
2. Press and firmly hold down the SETUP button. Do not release. The LED on the remote control will blink once and then, after 7 seconds, begin searching for your TV system's code. The LED will blink every few seconds as it searches.
3. Release the SETUP button as soon as your TV system's features start working to lock in the code.
4. Test the remote to ensure it operates all your TV system's features. If not, try the next code listed.

Troubleshooting

TV Only Setup

If you think you missed the TV code or intend to use the remote on a different brand of TV, follow these steps:

1. Press and hold the SETUP button down, then press and hold the CC button down simultaneously until the red LED light blinks quickly 3 times.
2. Release both buttons. You have now reset the code list back to the beginning.
3. Refer to the "TV Only Setup" instructions above for further setup.

Returning to TV Only Mode or Factory Default

To return the remote control to TV only mode or reset it to the factory default, follow these steps:

1. Press and hold the SETUP button down, then press and hold the CC button down at the same time until the red LED light blinks quickly 3 times.
2. Release both buttons. The code list has now been reset back to the beginning.
3. For TV-only operation, refer to "Page 1" for TV-only setup instructions. For Sonifi and Cruise Line setup, refer to the relevant sections above.

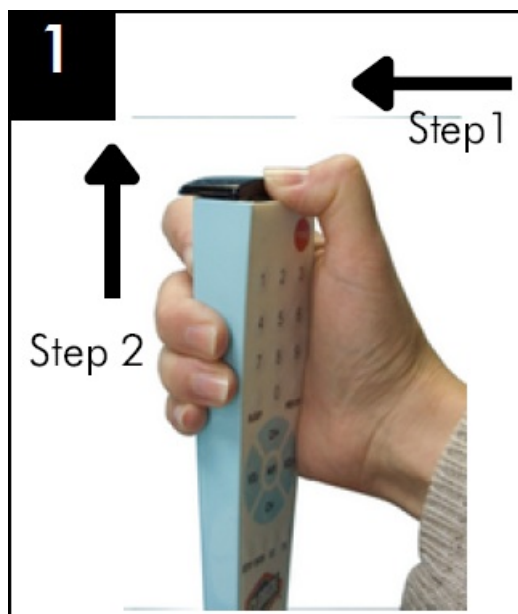
Direct Access Codes for TV Systems

The following two-digit codes can be used for TV systems:

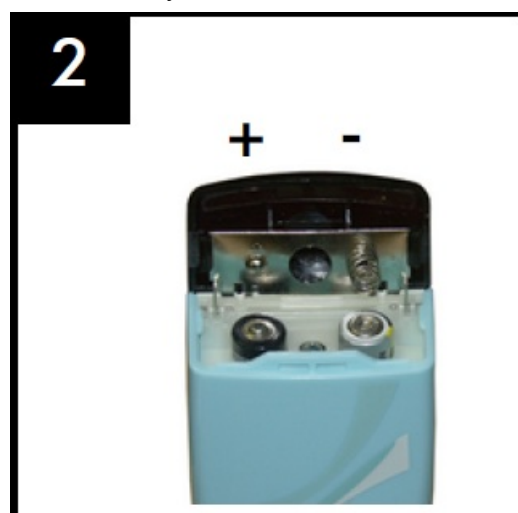
- TV Systems: 02, 06, 05, 07, 08, 10, 01, 03, 04, 11
- Cruise Line TV Systems: 14, 15, 16, 17, 21, 02, 05, 06

Battery Installation

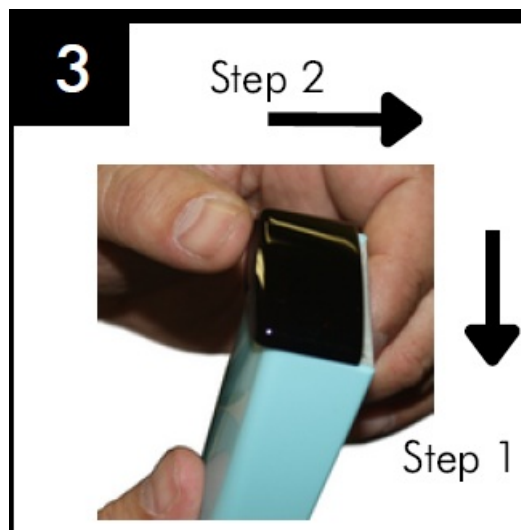
1. Looking at the keypad, slide the dark lens cover away from you (STEP 1) and lift the lid from the back (STEP 2).



2. Install 2 AAA batteries. Make sure the + and – symbols on the metal hinge of the battery compartment correspond with the + and – end of each battery.



3. With the keypad facing away from you, close the cover by gently pressing it down (STEP 1) and sliding it until it aligns with the front (keypad) of the device (STEP 2).



4. Test the remote by pressing the power button. The LED should light up, indicating the batteries are in correctly. If the LED fails to light up, the batteries are either incorrectly inserted or dead

The optional screw for the battery compartment is in the bag with the remote.

TV Only Setup Instructions

Important For Sonifi®, Lodgenet® or OnCommand® Systems And Cruise Ship TV Systems Skip To Page 2

- With the TV ON, point the remote at the TV's front panel. (For best results, stand at least 5 feet from the TV)
- Press and firmly hold down the SETUP button. Do not release. The LED on the remote will blink once and then after 7 seconds begin searching for your TV's code. The LED on the remote will blink every few seconds as it searches. The moment your TV shuts OFF, release the SETUP button to lock in the code.

Testing The Remote

Test power, volume, and channel functions. If all work correctly, setup is complete. If not, you may not have an exact code match for your TV model. Repeat the code search procedure above, it will begin where it left off

Troubleshooting TV Only Setup

Important: If you think you missed the TV code or you intend to use the remote on a different brand of TV, reset the remote to the TV factory default and restart the TV code search: Press and hold the SETUP button down, then press and hold the CC button down simultaneously until the red LED light blinks quickly 3 times, then release both buttons. You have now reset the code list back to the beginning. Then see TV Only Setup Instructions above

Setup

Sonifi® Systems (Lodgenet® OnCommand®) Setup

- Press and Hold Down both the SETUP and POWER buttons at the same time, until the LED light turns on and remains ON.
- Enter the two digit direct access number for your TV Systems from the list below; the LED light will then turn off confirming it was accepted.
- Test the remote to ensure it operates all your TV System's features. If not, try the next code listed.

Codes For Sonifi® Lodgenet® or OnCommand® Systems The most common code is 02, you can also try 06, 05, 07, 08 or 10, 01, 03, 04 and 11 Codes For Sonifi® Systems with Samsung® IPTV The code is 13.

Cruise Line TV Systems Setup

- Press and Hold Down both the SETUP and POWER buttons at the same time, until the LED light turns on and remains ON.
- Enter the two digit direct access number for your TV Systems from the list below; the LED light will then turn off confirming it was accepted.
- Test the remote to ensure it operates all your TV System's features. If not, try the next code listed.

Codes For Cruise Line TV Systems


The codes are 14, 15, 16, 17, 21, 02, 05, or 06

To Return Remote To TV Only Mode Or Return To The Factory Default

Press and hold the SETUP button down, then press and hold the CC button down at the same time until the red LED light blinks quickly 3 times, then release both buttons. You have now reset the code list back to the beginning. For TV-only operation see Page 1 for TV only setup or see Sonifi and Cruise Line setup above.

Copyright© 2022, Starlight Electronics LLC, Command In Hand Inc. rev.8-17-2022

Documents / Resources

	<p>Clean Remote CR2M Clean Remote Universal [pdf] Instruction Manual CR2M Clean Remote Universal, CR2M, Clean Remote Universal, Remote Universal, Universal</p>
---	---