

CLAUDGEN HE8408 Remote Control Unit Instruction Manual

[Home](#) » [CLAUDGEN](#) » CLAUDGEN HE8408 Remote Control Unit Instruction Manual 



INSTALLATION INSTRUCTIONS FOR Remote Control Unit Catalogue Number HE8408



Overview

The remote-control switch box HE8408 is for use with single/three-phase screen zone heaters. The unit comprises of one 10A double pole switch and three 10A switches in a surface mounting box, 166 mm x 86 mm x 40 mm deep.

Wiring the HE8408 to your heater

The wiring for the HE8408 is not the same on all heaters.

Figure 1 shows the wiring of the HE8408 for the RAC1306, RAC1309, RAC1509, RAC1512, HE8326, HE7433 and all heaters from the CA range.

Figure 2 shows the wiring of the HE8408 for the RAC10HL, RAC15HL and the RAC20HL.

For safety reasons, a sound earth connection must always be made to the unit before use.

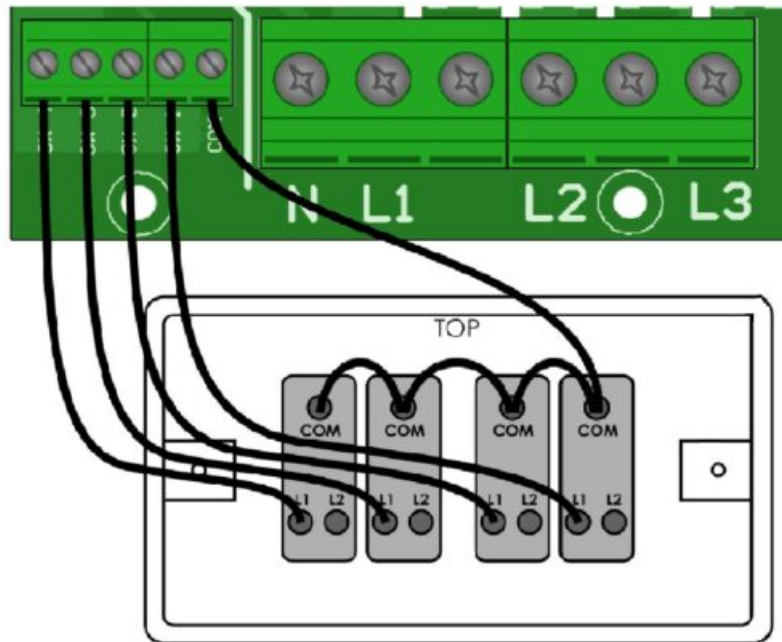


Figure 1

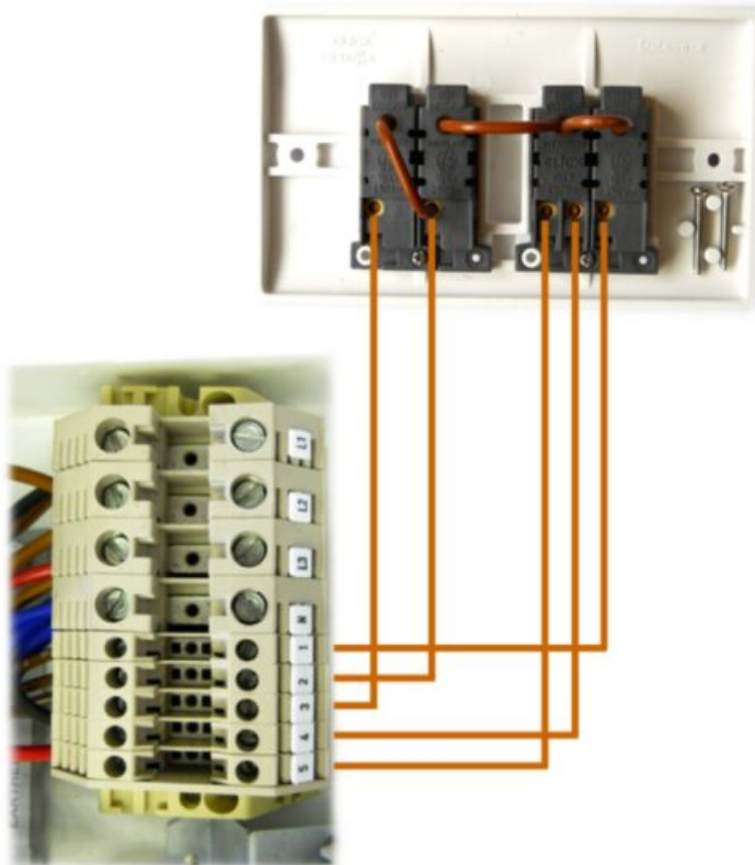


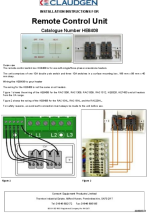
Figure 2

Consort Equipment Products Limited
 Thornton Industrial Estate, Milford Haven, Pembrokeshire, SA73 2RT
 Tel: 01646 692172
 Fax: 01646 695195
 BS EN ISO 9001 Registered Company No FM12671

Contents

- 1 Documents / Resources
- 2 Related Posts

Documents / Resources

	<p>CLAUDGEN HE8408 Remote Control Unit [pdf] Instruction Manual HE8408 Remote Control Unit, HE8408, Remote Control Unit</p>
---	---