

OneScreen™
by Clary Icon

Clary Icon
OPSI7L711
OneScreen OPS
Module



Clary Icon OPSI7L711 OneScreen OPS Module Installation Guide

[Home](#) » [Clary Icon](#) » Clary Icon OPSI7L711 OneScreen OPS Module Installation Guide 

Contents



- [1 Clary Icon OPSI7L711 OneScreen OPS Module](#)
- [2 What's included](#)
- [3 Assembly instructions](#)
- [4 FCC Compliance](#)
- [5 Documents / Resources](#)
 - [5.1 References](#)
- [6 Related Posts](#)

OneScreen™
by Clary Icon

Clary Icon OPSI7L711 OneScreen OPS Module



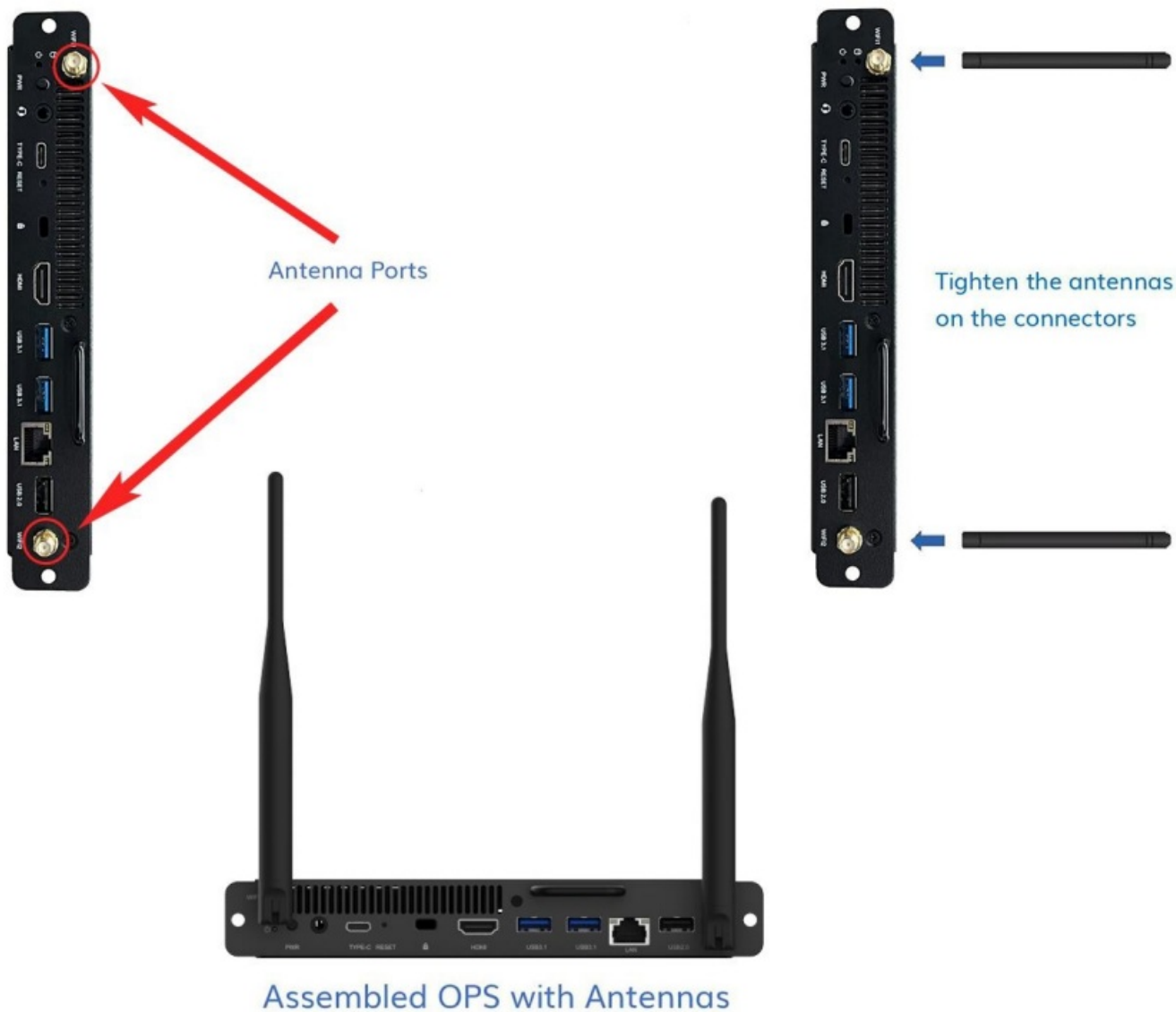
What's included

<p>A</p> 	<p>B</p> 
<p>1x OPS</p>	<p>2x Wi-Fi Antennas</p>

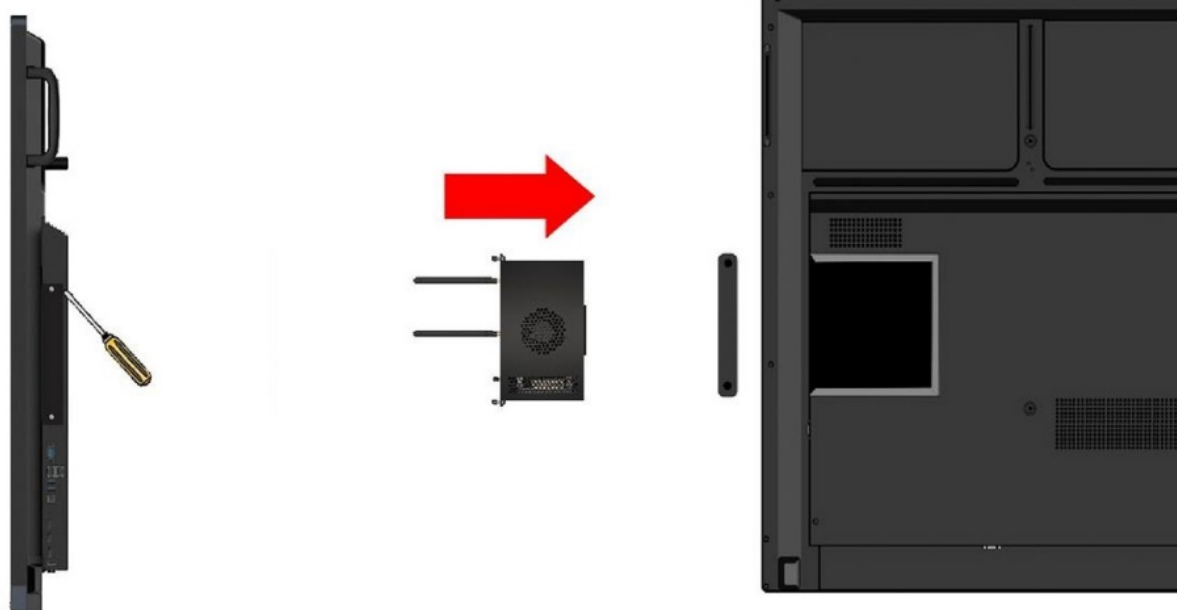
Note: The images in the entire document are illustrations for reference purposes and do not represent the exact shape or relative sizes of the parts included.

Assembly instructions

Step 1: Connect the 2x Wi-Fi antennas to your OneScreen OPS by tightening them with your hands onto the gold-colored antenna connectors on the back of the OPS.



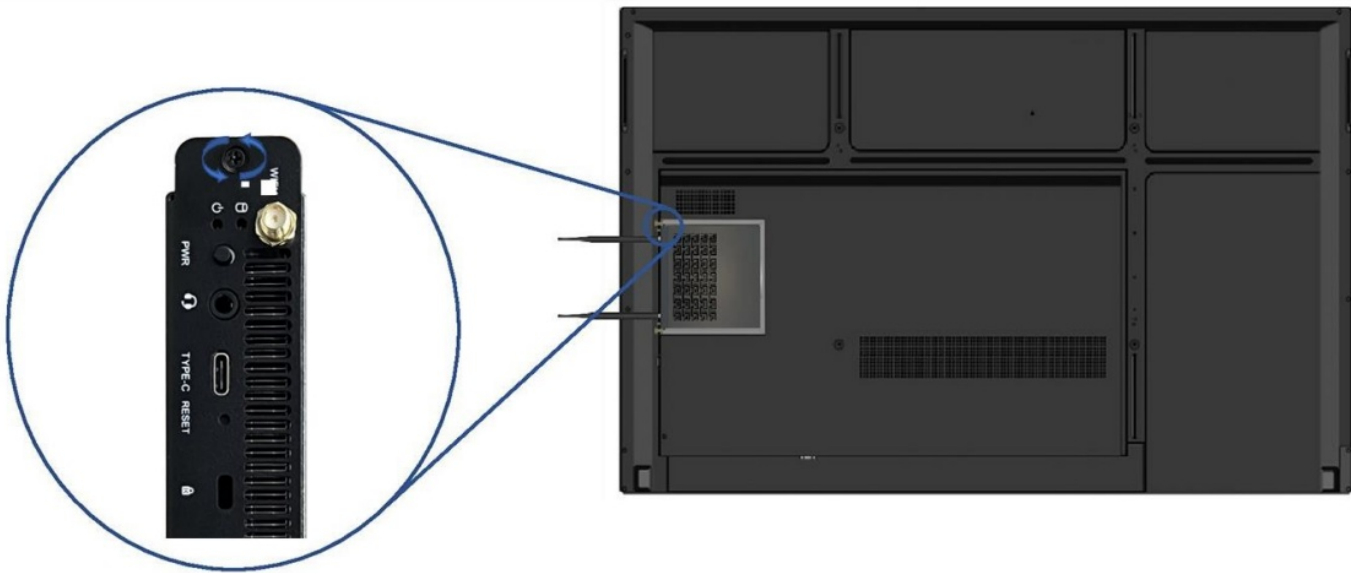
Step 3: Remove the OPS cover above the ports of the panel with a screwdriver and slide the OPS into the OPS slot located at the back of your OneScreen Panel with the OPS' fan grill facing outwards from the screen..



Remove the cover

Slide the OPS

Step 4: Tighten the 2x screws onto the back of the OPS to secure it in place.



Step 5: Press the small Power Button on the back of the OPS to power it on. It can also be powered on from the 'Source' option in your OneScreen Panel.



FCC Compliance

This device complies with part 15 of the FCC Rules. Operation is subject to the following two conditions:

1. This device may not cause harmful interference.
2. This device must accept any interference received, including interference that may cause undesired operation.

Any changes or modifications not expressly approved by the party responsible for compliance could void the user's authority to operate the equipment.

NOTE: This equipment has been tested and found to comply with the limits for a Class B digital device, pursuant to Part 15 of the FCC Rules. These limits are designed to provide reasonable protection against harmful interference in a residential installation. This equipment generates, uses and can radiate radio frequency energy and, if not installed and used in accordance with the instructions, may cause harmful interference to radio communications. However, there is no guarantee that interference will not occur in a particular installation. If this equipment does cause harmful interference to radio or television reception, which can be determined by turning the equipment off and on, the user is encouraged to try to correct the interference by one or more of the following measures:

1. Reorient or relocate the receiving antenna.
2. Increase the separation between the equipment and receiver.
3. Connect the equipment into an outlet on a circuit different from that to which the receiver is connected.
4. Consult the dealer or an experienced radio/TV technician for help.

To maintain compliance with FCC's RF Exposure guidelines, This equipment should be installed and operated with minimum 20 cm distance between the radiator and your body. Use only the supplied antenna.


To Contact Support

- support@onescreensolutions.com
- onescreensolutions.com/support



Additional Documents

Documents / Resources

	Clary Icon OPSI7L711 OneScreen OPS Module [pdf] Installation Guide 2AL8K-OPSI7L711, 2AL8KOPSI7L711, OPSI7L711 OneScreen OPS Module, OneScreen OPS Module, OPS Module
---	---

References

- [User Manual](#)

[Manuals+](#), [Privacy Policy](#)

This website is an independent publication and is neither affiliated with nor endorsed by any of the trademark owners. The "Bluetooth®" word mark and logos are registered trademarks owned by Bluetooth SIG, Inc. The "Wi-Fi®" word mark and logos are registered trademarks owned by the Wi-Fi Alliance. Any use of these marks on this website does not imply any affiliation with or endorsement.