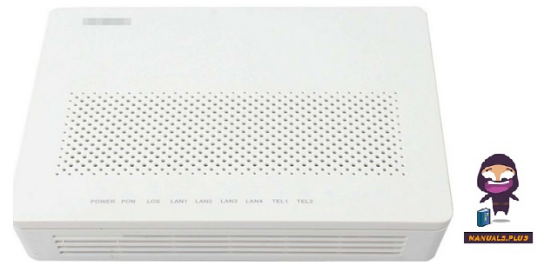


Claro'
Claro V1 GPON
Router



Claro V1 GPON Router Installation Guide

[Home](#) » [Claro](#) » Claro V1 GPON Router Installation Guide 

Contents

- [1 Claro V1 GPON Router](#)
- [2 Specifications](#)
- [3 Device Information](#)
- [4 CONNECT](#)
- [5 GET TO KNOW THE ROUTER](#)
- [6 SUGGESTIONS/Q&A](#)
- [7 FCC STATEMENT](#)
- [8 SAFETY INFORMATION](#)
- [9 Documents / Resources](#)
 - [9.1 References](#)

Claro'

Claro V1 GPON Router

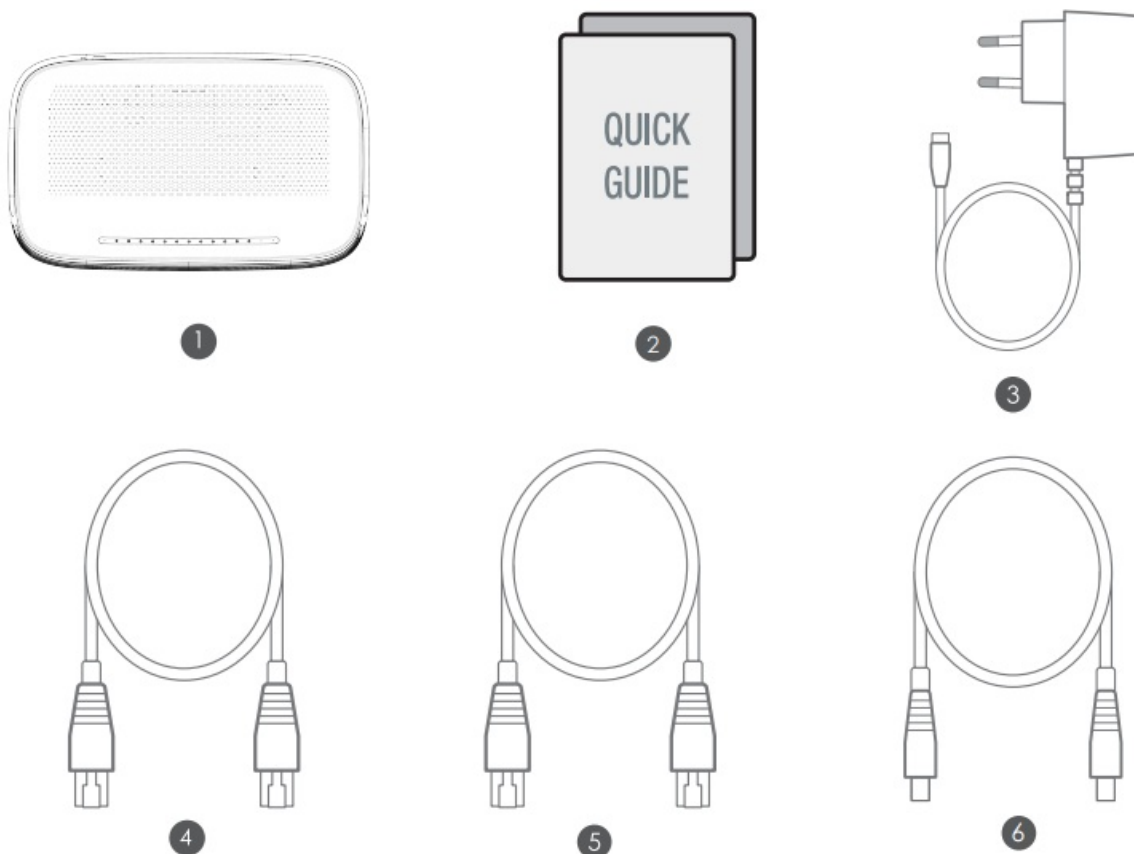


Specifications

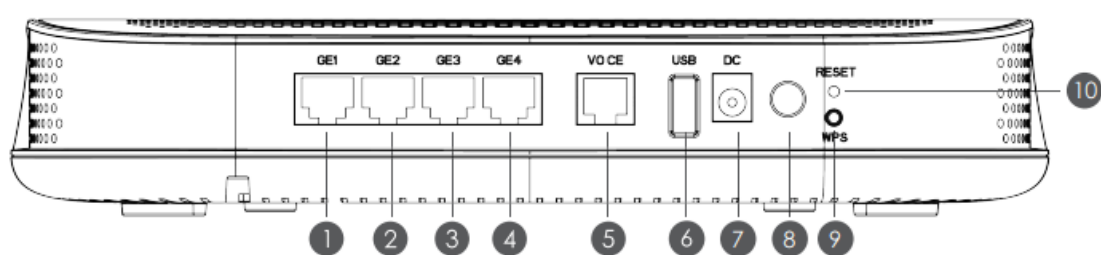
- Model: SG1696D2VR
- Dimensions: 95mm x 95mm
- Weight: 80g
- Manufacturer: Shenzhen SEI Robotics Co., Ltd.
- FCC ID: 2AOVU-SG1696D2VR V1

Device Information

Refer to the user manual for detailed information about the device, including troubleshooting tips and maintenance guidelines.

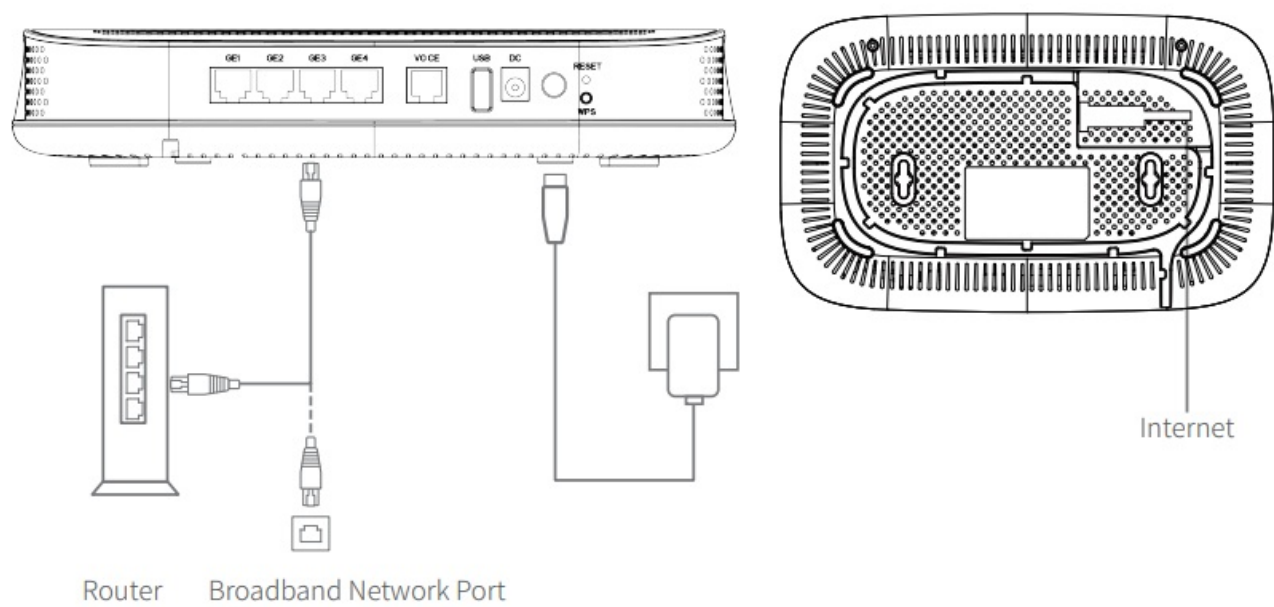


1. Router
2. Quick Guide
3. Power Adapter
4. Ethernet cable
5. telephone line
6. Fiber Optic Cable



1. GE1
2. GE2
3. GE3
4. GE4
5. VO CE
6. USB
7. DC
8. RWSET
9. POWER.
10. WPS

CONNECT



1. Choose a suitable and safe location to install SG1696D2VR.
2. Insert the fiber optic uplink provided by the telecommunications operator into the PON port (see the green interface at the bottom of the device).
3. Connect one end of the power adapter supplied with the SG1696D2VR to the power port of the SG1696D2VR and the other end to a household outlet.
Note: Using other adapters may damage the equipment or make it inoperable for use. The condition of the electrical outlet, the cables, must be in good condition and correspond to the requirements of the adapter. Avoid accidents such as fires or electric shocks due to using an item in poor condition.
4. When the Power LED indicates flashes, please wait for SG1696D2VR to boot completely. This process may take 100 seconds. Please check the status of the LED indicator in section 2 Appearance.
5. When the Internet LED indicates is always on, it indicates that you have successfully connected to the Internet.
6. If the Internet LED indicator is not lit up please refer to section 4.6.2 and try again to do points 2 – 5.

Items	Description
DC-12V	Power on and start.
GE 4/3/2/1	Gigabit LAN ports. Used to connect to a router, switch, computer or IPTV set top box.
PON	PON ports. It is used to connect the optical fiber cable of telecom operators to access the Internet.
WPS	WPS button. Wi-Fi-enabled devices can connect to the Wi-Fi networks of the Device without entering the password through WPS negotiation(0-3s).
RESET	Reset button. To restore the Device to factory settings: After the Device completes startup, press the button for more than 5 seconds and release it. All LED indicators will light off in a few seconds.

GET TO KNOW THE ROUTER

LED indicators

Items	Status	Description
Power	Solid on	The ONT is powered on properly.
	Off	The ONT is powered off or not powered on properly.
Internet	Solid on	The ONT is connected to the Internet.
	Off	The ONT is not connected to the Internet.
PON	Solid on	The ONT is registered successfully.
	Blinking	The registration is not completed (unregistered or registering).
	Off	The received optical power is lower than the optical receiver sensitivity, or no fiber cord is connected.
LOS	Blinking	The received optical power is lower than the optical receiver sensitivity, or no fiber cord is connected.
	Off	The received optical power is within the optical receiver sensitivity.
GE 4/3/2/1	Solid on	The LAN port is connected properly, but no data is being transmitted over the corresponding port.
	Blinking	The LAN port is connected properly, and data is being transmitted over the corresponding port.
	Off	No Ethernet device is connected or the Ethernet device is not connected to the LAN port properly.
2.4G/WPS	Solid on	The 2.4G Wi-Fi network is enabled.
	Blinking	The WPS is negotiating.
	Off	The Wi-Fi network is disabled.

Items	Status	Description
5G/WPS	Solid on	The 5G Wi-Fi network is enabled.
	Blinking	Blinking The WPS is negotiating.
	Off	The Wi-Fi network is disabled.
VOICE	Solid on	The ONT is registered with IMS, but no data is being transmitted.
	Blinking	The ONT is registered with IMS, and data is being transmitted.
	Off	The ONT is not registered with IMS.
USB	Solid on	The USB device is connected to the USB port properly, but no data is being transmitted over the port.
	Blinking	The USB device is connected to the USB port properly, and data is being transmitted over the port.
	Off	The USB port is disconnected or not connected properly.

SUGGESTIONS/Q&A

For optimal WiFi performance, it is recommended to position the router according to the following guidelines:

- Place the router in an elevated, open, and unobstructed location, avoiding confined spaces or corners.
- Ensure the router is positioned upright.
- Keep the router away from metal obstructions such as electrical boxes and metal racks.
- Position the router away from electrical devices that may cause interference, such as microwaves, ovens, refrigerators, and cordless phones.

Here are the steps to set up the router:

1. Power on the router.

2. Connect the WAN port of the router to the LAN port of your modem or the Ethernet jack using an Ethernet cable.
3. Connect your wireless client, such as a smartphone, to the WiFi network of the router. Alternatively, you can use an Ethernet cable to connect the computer to one of the LAN ports (1/2) of the router.

Here is the corrected version of the FAQ

FAQ

Q1: I cannot access the internet after configuration. What should I do?

A1: Try the following solutions first:

Check if the WAN port of the router is properly connected to a modem or Ethernet jack.

If the issue persists, try the following solutions:

For WiFi-enabled devices, ensure they are connected to the WiFi network of the router.

For wired devices:

Check if your wired devices are connected to a LAN port properly.

Ensure that wired devices are set to obtain an IP address and DNS server address automatically.

Q2: How do I reset the router?

A2: When the router is working normally, press and hold the WPS/RST button for about 5 seconds. Release the button when the LED indicator blinks rapidly. The router will enter the reset mode. Do not disconnect the DC power supply during this process. Wait for about 2-3 minutes, and the device will restart.

FCC STATEMENT

FCC regulatory conformance:

This device complies with Part 15 of the FCC Rules. Operation is subject to the following two conditions:

1. This device may not cause harmful interference.
2. This device must accept any interference received, including interference that may cause undesired operation.

NOTE: This equipment has been tested and found to comply with the limits for a Class B digital device, pursuant to part 15 of the FCC Rules. These limits are designed to provide reasonable protection against harmful interference in a residential installation. This equipment generates uses and can radiate radio frequency energy and, if not installed and used in accordance with the instructions, may cause harmful interference to radio communications. However, there is no guarantee that interference will not occur in a particular installation. If this equipment does cause harmful interference to radio or television reception, which can be determined by turning the equipment off and on, the user is encouraged to try to correct the interference by one or more of the following measures:

- Reorient or relocate the receiving antenna.
- Increase the separation between the equipment and receiver.
- Connect the equipment into an outlet on a circuit different from that to which the receiver is connected.
- Consult the dealer or an experienced radio/TV technician for help

NOTE: The manufacturer is not responsible for any radio or TV interference caused by unauthorized modifications to this equipment. Such modifications could void the user's authority to operate the equipment.

RF Exposure

This equipment complies with FCC radiation exposure limits set forth for an uncontrolled environment. This equipment should be installed and operated with minimum distance of 20 cm between the radiator and your body. This transmitter must not be co-located or operating in conjunction with any other antenna or transmitter.

FCC ID: 2AOVU-SG1696D2VR

SAFETY INFORMATION

CAUTION

NOTICE: To prevent fire and electric shock, do not expose this device to rain or moisture. In order to avoid any possible risk of electric shock, never attempt to open the unit. In case of the unit breaking down, repair of the unit should be carried out by qualified technicians. No part of this unit should be repaired by users.

\$Safety Precautions

- Before conducting any operation, please read the operation instructions and safety precautions carefully and follow them to prevent accidents. The warning and danger items mentioned in other documents do not encompass all safety precautions that must be observed. They serve as supplementary information, and installation and maintenance personnel should understand the fundamental safety precautions that need to be adhered to.
- For wall mounting, the equipment is suitable for mounting at heights $\leq 2\text{m}$ only.
- For desktop mounting, the device must be horizontally mounted for safe usage.
- Do not use the device in areas where wireless devices are prohibited.
- Please use the provided power adapter.
- The mains plug serves as the disconnecting device and should be easily operable.
- The power socket should be installed near the device and easily accessible.
- Operating environment: Temperature: 0°C to 45°C ; Humidity: (10% – 90%) RH, non-condensing; Storage environment: Temperature: -40°C to $+70^{\circ}\text{C}$; Humidity: (5% – 90%) RH, non-condensing.
- Keep the device away from water, fire, high electric fields, high magnetic fields, and flammable and explosive materials.
- Unplug the device and disconnect all cables during lightning storms or when the device is not in use for extended periods.
- Do not use the power adapter if its plug or cord is damaged.
- If you notice smoke, abnormal sounds, or odors while using the device, stop using it immediately, disconnect the power supply, unplug all connected cables, and contact the after-sales service personnel.
- Unauthorized disassembly or modification of the device or its accessories voids the warranty and may pose safety risks.

Documents / Resources



[Claro V1 GPON Router](#) [pdf] Installation Guide

SG1696D2VR, 2AOVU-SG1696D2VR, 2AOVUSG1696D2VR, V1 GPON Router, V1, GPON Router, Router

References

- [User Manual](#)

[Manuals+](#), [Privacy Policy](#)

This website is an independent publication and is neither affiliated with nor endorsed by any of the trademark owners. The "Bluetooth®" word mark and logos are registered trademarks owned by Bluetooth SIG, Inc. The "Wi-Fi®" word mark and logos are registered trademarks owned by the Wi-Fi Alliance. Any use of these marks on this website does not imply any affiliation with or endorsement.