

# Clarke® E20DS Dual Speed Floor Buffer



## CLARKE20DS Dual Speed Floor Buffer Instruction Manual

[Home](#) » [Clarke](#) » CLARKE20DS Dual Speed Floor Buffer Instruction Manual 

### Contents

- 1 CLARK E20DS Dual Speed Floor Buffer
- 2 Product Information
- 3 Product Usage Instructions
- 4 Frequently Asked Questions
- 5 INTRODUCTION
- 6 SAFETY PRECAUTIONS
- 7 GROUNDING INSTRUCTIONS
- 8 OPERATION OF FLOOR MACHINE
- 9 MAINTENANCE
- 10 STORAGE
- 11 HANDLE RELEASE ASSEMBLY INSTRUCTIONS
- 12 BASE ASSEMBLY
- 13 WIRING DIAGRAM
- 14 Documents / Resources
  - 14.1 References

# Clarke®

**CLARK E20DS Dual Speed Floor Buffer**



## Product Information

### Specifications

- **Model:** CFP Pro 20DS
- **Intended Use:** Commercial
- **Environment:** Indoor use only
- **Recommended Accessories:** Use only recommended accessories

### Product Usage Instructions

#### Safety Precautions

This machine is intended for commercial use in an indoor environment.

#### Follow these safety precautions

1. Do not operate the machine without proper ventilation.
2. Use only recommended accessories.
3. Read and understand all safety precautions before operation.

#### Operation of Floor Machine

1. Ensure the machine is plugged into a grounded outlet.

2. Follow the handle release assembly instructions for proper setup.
3. Operate the machine according to the user manual guidelines.

## **Maintenance**

1. Ensure proper ventilation during operation to allow the motor to run cooler.
2. Lubricate the wheels with a water-resistant lubricant once a month.

## **Storage**

1. Unplug the machine and wrap the cord on the handle.
2. Remove the pad driver or brush before storing.
3. Store the machine upright in a dry area.

## **Handle Release Assembly Instructions**

1. Follow Step 1 to remove the nut and spacer from the handle bracket assembly.
2. Proceed with Step 2 to place the handle assembly into handle clamp blocks.
3. Complete assembly by following Step 3 and Step 4 for proper cord and power cord cover connection.

## **Frequently Asked Questions**

- **Q: Can this machine be used outdoors?**
- **A:** No, this machine is intended for indoor use only.
- **Q: How often should I lubricate the wheels?**
  - **A:** Lubricate the wheels with a water-resistant lubricant once a month for optimal performance.

## **INTRODUCTION**

- This book has important information for the use and safe operation of this machine. Failure to read this book before operating or attempting any service or maintenance procedure to you.
- Clarke machine could result in injury to you or to other personnel; damage to the machine or other property could occur as well. You must have training in the operation of this machine before using it.
- If your operator(s) cannot read this manual, have it explained fully before attempting to operate this machine.
- All directions given in this book are as seen from the operator's position at the rear of the machine.

## **SAFETY PRECAUTIONS**

This machine is intended for commercial use. It is constructed for use in an indoor environment and is not intended for any other use. Use only recommended accessories.

**All operators shall read, understand, and exercise the following safety precautions:**

1. **Do not operate the machine:**
  - Unless trained and authorized.

- Unless you have read and understand the operator's manual.
- Inflammable or explosive areas.
- With a damaged cord or plug.
- If not in proper operating condition.
- In outdoor areas.
- In standing water.
- With the use of extension cords.

**2. Before operating the machine:**

- Make sure all safety devices are in place and operate properly.

**3. When using a machine:**

- Do not run the machine over the cord.
- Do not pull the machine by a cord or plug.
- Do not pull the cord around sharp edges or corners.
- Do not unplug by pulling on the cord.
- Do not stretch the cord.
- Do not handle the plug with wet hands.
- Keep the cord away from heated surfaces.
- Report machine damage or faulty operation immediately.

**4. Before leaving or servicing the machine:**

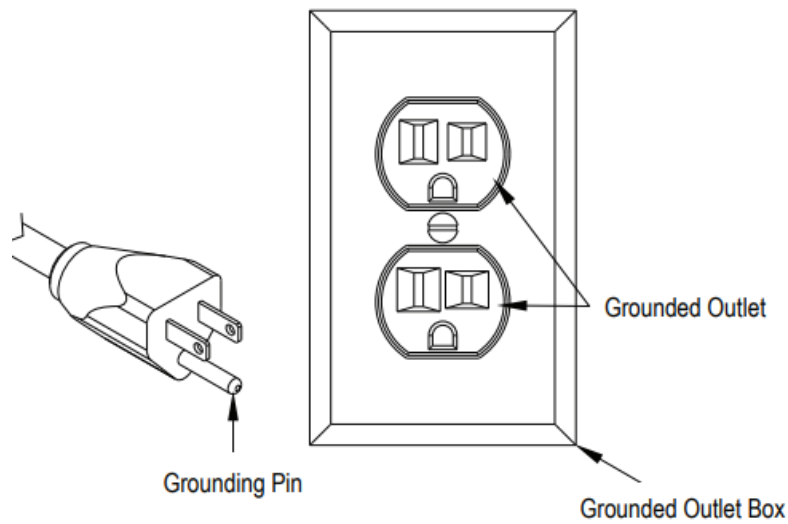
- Turn off the machine.
- Unplug the cord from the outlet.

**5. When servicing machine:**

- An experienced technician should only perform service work.
- Unplug the cord from the outlet.
- Use manufacturer-supplied or approved replacement parts.

## **GROUNDING INSTRUCTIONS**

- This floor machine shall be grounded while in use to protect the operator from electric shock. The machine is provided with a three-conductor cord and a three-contact grounding-type attachment plug to fit the proper grounding-type receptacle.
- The green [or green and yellow] conductor in the cord is the grounding wire. Never connect this wire to anything other than the grounding pin of the attachment plug.
- This machine is for use on a nominal 120-Volt circuit and has a grounding plug that resembles the plug illustrated in the gure below.
- Make sure that the machine is connected to an outlet having the same configuration as the plug. No adapter should be used with this machine.



## OPERATION OF FLOOR MACHINE

READ THE OPERATOR MANUAL THOROUGHLY BEFORE OPERATING OR SERVICING THIS MACHINE.

### GENERAL USE

1. Remove any obstructions or other obstacles in the area which is to be cleaned.
2. Place the handle in the upright position and tilt the machine back until the handle rests on the floor
  - Be sure the machine is not plugged into an outlet
3. Attach the pad driver or brush to the machine by placing the clutch plate over the gearbox hub and turning the driver / brush 1/4 turn.
4. Place the machine back into its upright position.
5. Plug the power cord into a grounded outlet.
  - **NOTE:** Never use an extension cord in conjunction with the standard power cord.
6. The handle height may be adjusted by lifting the compression handle which is located on the right side of the handle tube about 1 foot above floor level.
  - Release the compression handle and adjust the handle to a safe operating height, then push back down on the compression handle to lock the handle in the operating position.
7. Select either low speed (185rpm) or high speed (330rpm) by pushing the motor-mounted switch into the low or high position.
  - **NOTE:** Never change the speed while operating the machine. Be sure the power is turned off before changing the speed.
8. To start the machine, press the red safety button on the top of the upper switch housing, and then squeeze either of the operating triggers. (the safety button must be depressed before squeezing the operating triggers.)
9. When the machine is in operation, both hands should be placed on the switch housing (upper handle).
10. During operation, to make the machine go right, gently raise the handle. To make the machine to the left, gently lower the handle.
11. To stop the machine at any time, simply release the operating trigger [s] and the machine will stop automatically.

## MAINTENANCE

- To keep this machine performing well for many years, please follow the following maintenance procedures.
- Always confirm the machine is unplugged from the power source before performing any maintenance or repairs!

1. Unplug the machine as soon as you are done using it.
2. Tilt the machine back and remove the pad driver or brush.
  - \* Never store a low-speed machine with the pad driver or brush mounted to the machine
3. Clean the outside of the machine with a mild cleaner.
4. Check the power cord for any damage. If damage is detected, replace the power cord immediately.
5. Lubricate wheels with a water-resistant lubricant once a month.
6. Check the machine for loose or missing nuts and bolts, and replace them as necessary.
7. If the machine is used in a dusty environment, you may remove the motor cover and blow the motor clean with compressed air. This will ensure proper ventilation, and allow the motor to run cooler.

## **STORAGE**

1. Unplug the machine from the power source and wrap the cord on the handle.
2. Tilt the machine back and remove the pad driver or brush.
3. Store the machine in the upright position and a dry area.

## **HANDLE RELEASE ASSEMBLY INSTRUCTIONS**

### **1. STEP 1**

1. Remove the nut and spacer from the handle bracket assembly.
2. Push the two handle brackets backward so they lay on the floor.

### **2. STEP 2**

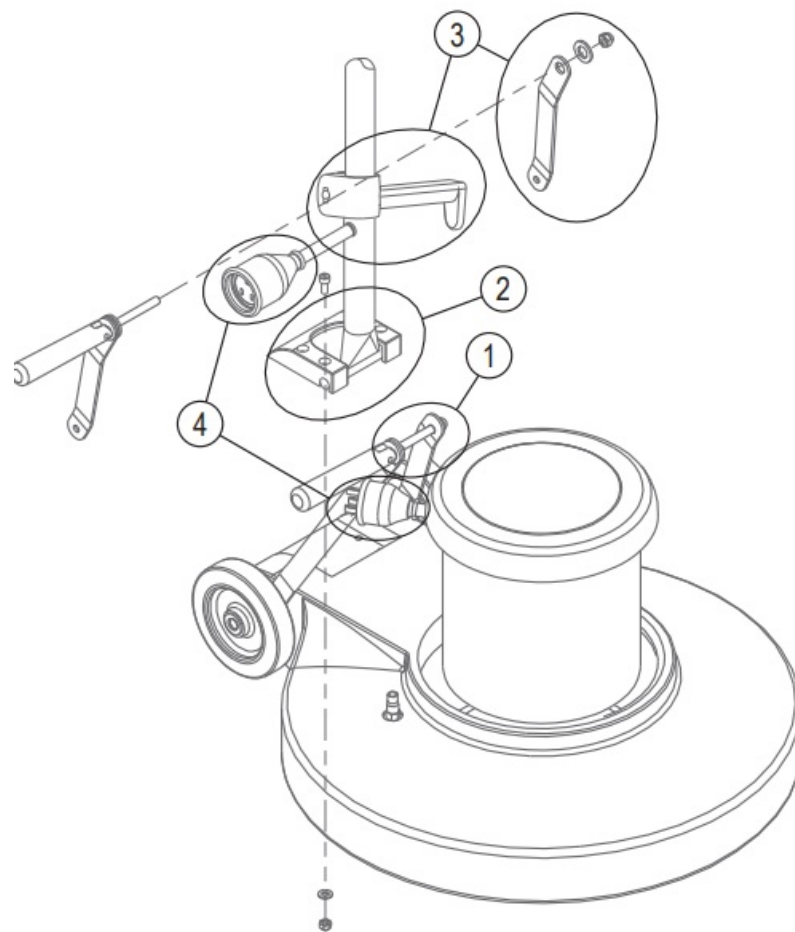
1. Remove Handle Clamp Blocks with 5mm hex head.
2. Place handle assembly into handle clamp blocks.
3. Re-attach the blocks to the base with a 5mm hex head.

### **3. STEP 3**

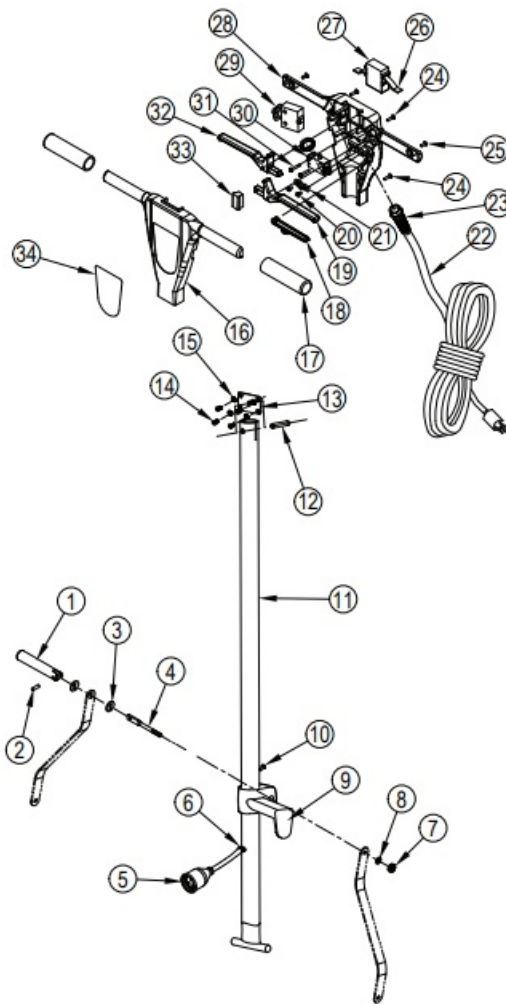
1. Make sure the actual cord wrap faces to the left of the machine when you are standing behind it.
2. Assemble hardware in the following order: spacer, left handle bracket, and nylock nut. (Do not over tighten nylock nut. Only tighten it enough to hold the handle in place when the compression lever is in the down position).

### **4. STEP 4**

1. Connect Power Cords
2. Connect Power Cord Covers together.



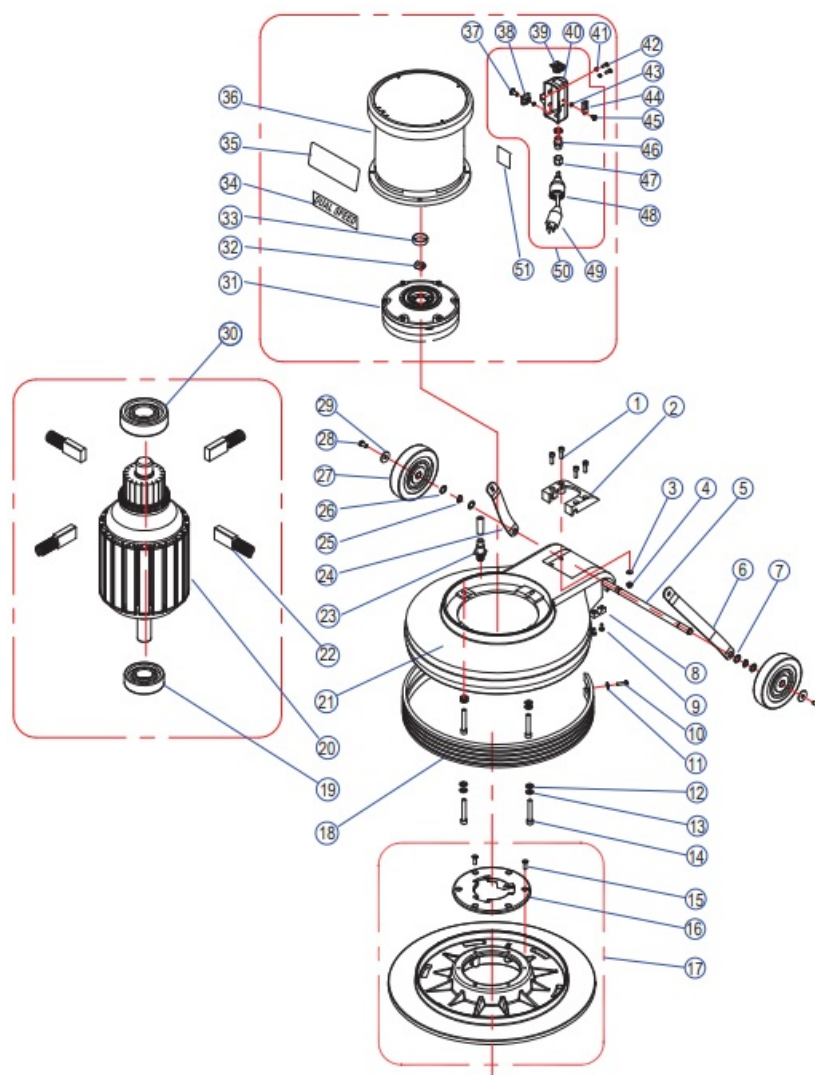
## HANDLE ASSEMBLY



Item	Ref. No.	Qty	Description
1	VF30016	1	Handle Release
2	VF30017	1	Screw
3	VF30018	2	Washer, Plain
4	VF300152	1	Bolt, Handle Release
5	VF45125	1	Cord, Handle
	AS41901	1	Plug Protector, Small Male <b>(for VF45125)</b>
6	VF50120A	1	Grommet
7	VF13504	1	Nut, Lock, M10
8	VF13517	1	Washer, Plain
9	VF300141	1	Cord Wrap Block
10	VF13493	1	Screw, M6 X 10
11	AS312206B	1	Tube

12	VF13570	1	Pin
13	VF40169	1	Connection Plate
14	VF14222	4	Screw, M5x12
15	VF13604	4	Tooth Washer, M5
16	AS312209	1	Front Cover
17	VF48310	2	Handle Grip
18	AS22006S	1	Lever, Solution
19	AS22004S	1	Lever, Left, Switch
20	VV13667	2	Screw, M4 X 12
21	VF48309	1	Clamp Block
22	VF45119	1	Cord, Power Supply
23	AS22009-1	1	Strain Relief, Cord
24	GT13009	5	Screw, M5 X 30
25	GT13008	2	Screw, M5 X 20
26	GV40218	1	Safety Button
27	GV40209	1	Safety Button
28	AS312209	1	Rear Cover
29	VF99010C	1	Breaker, Circuit, 17a
30	VF44203	1	Switch Assy
31	VF14212	2	Screw, M3 X 25
32	AS22005S	1	Lever, Right, Switch
33	AS312203	1	Cover
34	GV40226CL	1	Label, Front Cover

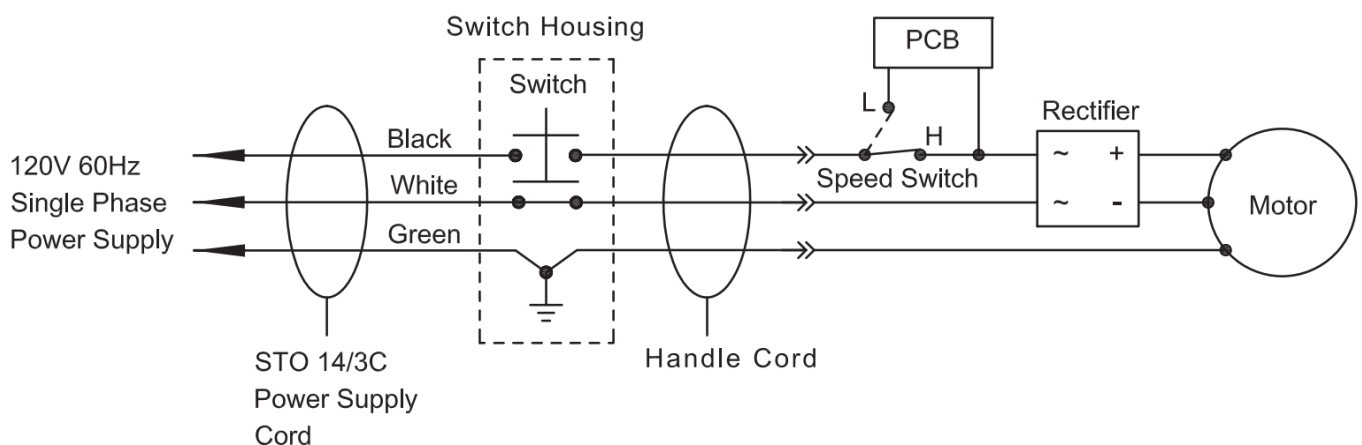
## BASE ASSEMBLY



Item	Ref. No.	Qty	Description	Item	Ref. No.	Qty	Description
1	GT13080	4	Screw, M6 X 30	27	VF48202	2	Wheel, 5"
2	AS312201 TP	1	Plate, Handle Guide	28	VF44012	2	Screw, M6 X 12.7
3	GT13032	4	Washer, Plain, M6	29	VF13666	2	Washer, M6
4	VF13502	4	Nut, Lock, M6	30	ZD40225	1	Bearing, #6203Z
5	VF30026	1	Axle	31	VF99980 2B	1	Gear Box
6	VF30020	1	Bracket, Left Handle	32	VF99021	1	Coupler
7	VV20274	4	Washer, Plain, M13	33	MT01102	1	Sleeve
8	GV40235	2	Clamp Block, Axle	34	VF40990	1	Label, Dual Speed
9	VV13621	4	Screw, Self-Tapping, St, M5 X 20	35	VF41079 CL	1	Label, Motor
10	VA13474	5	Screw, M5 X 16	36	ZD48000-1	1	Motor, Dual Speed
11	VF13474A	4	Washer, Plain, M5	37	VA13473	1	Screw, M4 x 16

12	VF13524	4	Washer, Plain, M8	38	VF44204	1	Rectifier
13	VF13519	4	Washer, Lock, M8	39	VA91347	1	Switch
14	GT13018	4	Screw, M8 X 55	40	ZD48309 DY	1	Shell
15	MF- VF002-4A	6	Screw, Self-Tapping, 1/4"-1"	41	VF13604	4	Washer, Lock, External Tooth
16	MF- VF002-2	1	Clutch Plate	42	VF14214	4	Screw, M5 X 8
17	MF- VF022JD	1	Pad Holder, 19"	43	GT13014	2	Nut, Nylon Insert, M4
18	AS312204	1	Bumper, 20"	44	ZD48316	1	Triac Assembly
19	ZD48315	1	Bearing	45	VV13650	4	Screw, M4 x 12
20	ZD48200	1	Shaft & Rotor Assembly	46	VV67405	1	Strain Relief, Cord
21	VF40100TP	1	Frame, 20"	47	VV67405-1A	1	Nut
22	VF99926-2	4	Kit, Carbon Brush	48	AS41902	1	Plug Protector, Large Female
23	VF40152	1	Hose Barb	49	VF99979 4	1	Cord, Motor
24	VF30019	1	Bracket, Handle, Right	50	ZD48330	1	Kit, Speed Adjustment
25	VF13520	2	Washer, Lock	51	VF40994	1	Read Manual label
26	VF50119	2	Washer, Plain, M12				


## WIRING DIAGRAM



- 14600 21st Avenue North
- Plymouth, MN 554473408
- [www.clarkeus.com](http://www.clarkeus.com)
- Phone: 8002530367
- Fax: 8008252753

- ©2014 Nilfi sk-Advance, Inc.
- A Nilfi sk-Advance Brand

## Documents / Resources

	<p><a href="#">Clarke CLARKE20DS Dual Speed Floor Buffer</a> [pdf] Instruction Manual</p> <p>CLARKE20DS Dual Speed Floor Buffer, CLARKE20DS, Dual Speed Floor Buffer, Speed Floor Buffer, Floor Buffer, Buffer</p>
---	--

## References

- ● [CustomerZone: Buy Nilfisk, Advance, Clarke, and Viper Parts, Accessories, and Machines](#)
- [User Manual](#)

### Manuals+ Privacy Policy

This website is an independent publication and is neither affiliated with nor endorsed by any of the trademark owners. The "Bluetooth®" word mark and logos are registered trademarks owned by Bluetooth SIG, Inc. The "Wi-Fi®" word mark and logos are registered trademarks owned by the Wi-Fi Alliance. Any use of these marks on this website does not imply any affiliation with or endorsement.