



CLR-C1-ODDG ClareOne Outdoor Sensor Installation Guide

[Home](#) » [CLARE](#) » CLR-C1-ODDG ClareOne Outdoor Sensor Installation Guide 



C1-ODDG ClareOne Outdoor Sensor Installation Guide

Last modified: 08/18/20

Model number: CLR-C1-ODDG



Contents

- [1 Description](#)
- [2 Installation](#)
- [3 Programming](#)
- [4 Specifications](#)
- [5 Regulatory information](#)
- [6 Warranty information](#)
- [7 Documents / Resources](#)
 - [7.1 References](#)
- [8 Related Posts](#)

Description

The CLR-C1-ODDG is a supervised wireless sensor that detects the opening and closing of doors, windows, gates, garage doors, etc. in extreme environments (-32° to 120°F (-35.6° to 49°C)). The sensor is constructed with a water-tight internal gasket to keep the sensor dry and protected from the elements. The unique design allows for outdoor mounting. The sensor and magnet are mounted using screws (included) or straps to secure the sensor to a post.

When activated, the sensor transmits an open (trip) or close (restore) signal to the panel. The sensor transmits supervisory, tamper, and low battery (as needed) to the ClareOne panel. The sensor is powered by (2) replaceable CR 2032, 3-VDC, Lithium batteries.

Installation

Follow the installation guidelines.

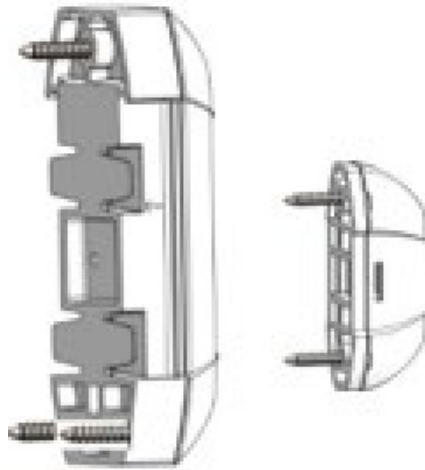
- Mount the sensor on a non-moving frame or post, allowing the magnet to move activating the sensor.
- Mount sensors at least 5 inches above the ground to avoid damaging them.
- The sensors can be mounted to either wood or metallic surfaces.
- Mounting the sensor on metal can affect the transmitting range and magnet gap performance. Test the sensor from the desired location using the installer sensor test before permanently mounting. (This test can be performed using the ClareOne panel's sensors testing feature. Settings > User/Installer Settings > System Tests > Sensor Test)
- The magnet should be mounted within 7/8" for wood or 1/2" for metal installations. Based on the magnet mount spacing, direction of operation, and material of the mounting surface, the gap for opening varies between 1/8" and 1 3/4". Desired operation should be checked before permanent installation.
- After mounting the sensor, re-test the sensor using the procedure in the section "Testing the sensor."

Mounting the sensor

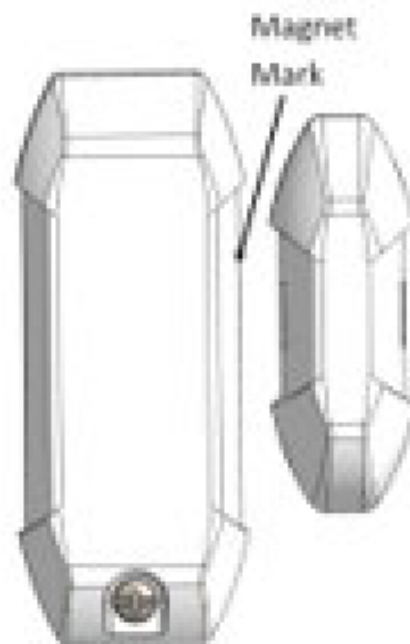
Mount the sensor using the supplied mounting screws or straps (not included).

To mount the sensor using mounting screws:

1. Remove the cover screw from the sensor.
2. Mount the sensor using 3 mounting screws and the magnet using 2.



3. Mount the magnet into the desired location making sure the magnet alignment mark lines up with the sensor mark.



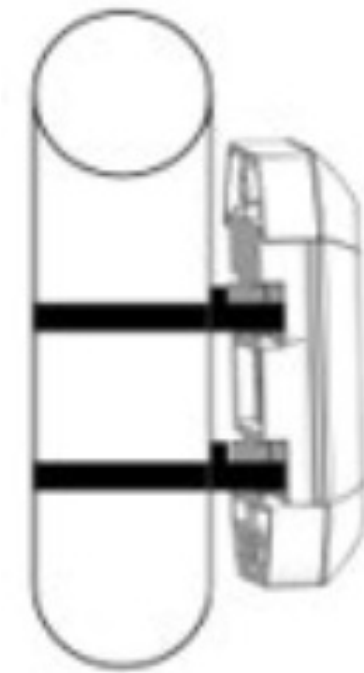
To mount the sensor using mounting straps:

Note: The sensor case is designed to support strap mounting.

1. Use a plastic tie strap and wrap it around the mounting post and through the sensor.

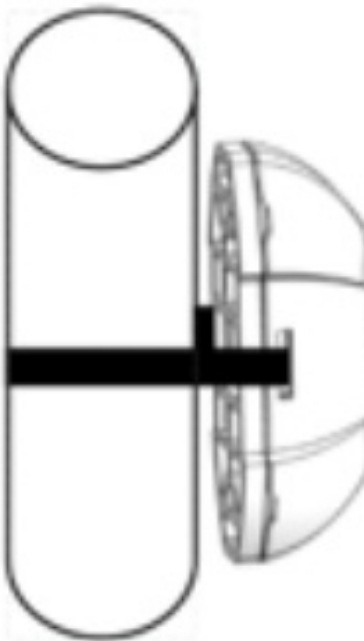
Notes

- Make sure the straps are tight, preventing the sensor from sliding away from the magnet.
- We recommend not using metal tie strips. They may interfere with RF signals.



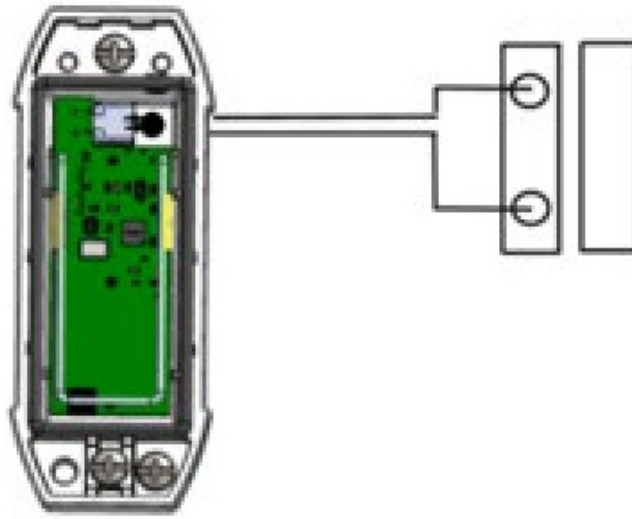
2. Mount the magnet by running a strap through the slot in the magnet housing.

Note: Make sure straps are tight to prevent the sensor from sliding away from the magnet.



External contact

An external contact can be connected to the transmitter or other device by feeding contact wiring through the rubber grommet.



Notes

- Do not exceed 50 ft. when wiring to an external contact.
- Only one set of contacts can be used at one time. Either use the external contact input or use the provided magnetic contact. They cannot be used together. To prevent physical bypass of the external contact, cut the internal reed switch.

Programming

To add the sensor to your panel and for detailed programming instructions, please refer to the ClareOne Wireless Security and Smart Home Panel User Manual (DOC ID 1871).

To add the door window sensor:

1. Put the ClareOne panel in “add mode” and follow the displayed instructions for adding the sensor.
2. Pull the magnet away from the sensor body.
 - Or –
 - Open the sensor body case to tamper.
3. Exit “add mode.”

Testing the sensor

Test the sensor once a week.

To test the sensor:

1. Set the panel to the sensor test mode. See the full ClareOne Panel manual.
2. Take the sensor and magnet to the desired mounting location, making sure to line up their alignment marks with each other. Trip the sensor by pulling the magnet away from the sensor, or by opening/closing the attached external contact.
3. Monitor the system after tripping the sensor.

Note: If a low battery alarm occurs, replace the battery within 7 days.

CAUTION: Battery may explode if mistreated. Do not recharge, disassemble or dispose of in fire.

Specifications

Compatible panel	ClareOne (CLR-C1-PNL1)
Transmitter frequency	433MHz
Encrypted	Yes
Operating gap	1.75" (44 mm)
Transmitted indications	Alarm, supervision, tamper and low battery Dual tamper; sensor and case added for security.
Supervisory keep-alive	60 to 70 minutes
Battery type	(2x) CR2032
Battery life	6 to 8 years
Operating environment	
Temperature	-35 to 120°F (-37 to 49°C)
Relative humidity	0 to 95% noncondensing
Dimensions (L × W × H)	Sensor 3.39" L × 1.34" W × 0.7" H. (86.1 × 34.03 × 17.78 mm) Magnet 1" L × 7/8" W × 0.7" H. (25.4 × 22.23 × 17.78 mm)
Water resistant	Yes
Certifications	FCC: 15.109 Class B 15.231, Industry Canada: ICES-003, RSS-210

Regulatory information

Manufacturer

Clare Controls, LLC.
7519 Pennsylvania Ave, Suite 104
Sarasota, FL 34243

FCC compliance

This equipment has been tested and found to comply with the limits for a Class B digital device, pursuant to Part 15 of the FCC Rules. These limits are designed to provide reasonable protection against harmful interference in a residential installation.

This equipment generates, uses and can radiate radio frequency energy and, if not installed and used in accordance with the instructions, may cause harmful interference to radio communications. However, there is no guarantee that interference will not occur in a particular installation.

If this equipment does cause harmful interference to radio or television reception, which can be determined by turning the equipment off and on, the user is encouraged to try to correct the interference by one or more of the following measures:

- Reorient or relocate the receiving antenna.
- Increase the separation between the equipment and receiver.
- Connect the equipment into an outlet on a circuit different from that to which the receiver is connected.
- Consult the dealer or an experienced radio/TV technician for help.

This device complies with Industry Canada license-exempt RSS standard(s). Operation is subject to the following two conditions:

1. this device may not cause interference, and
2. this device must accept any interference, including interference that may cause undesired operation of the device.

In accordance with FCC requirements of human exposure to radio frequency fields, the radiating element shall be installed such that a minimum separation distance of 20 cm is maintained from the general population.

FCC: 2ABBZ-RF-DWSOD-433

IC: 11817A-RFDWSOD433

This device complies with Part 15 of the FCC Rules. Operation is subject to the following two conditions:

1. This device may not cause harmful interference, and
2. This device must accept any interference received, including interference that may cause undesired operation.

Changes or modifications not expressly approved by the party responsible for compliance could void the user's authority to operate the equipment.

This Class B digital apparatus complies with Canadian ICES-3B.

MANUFACTURER HEREBY DISCLAIMS ALL WARRANTIES AND REPRESENTATIONS, WHETHER EXPRESS, IMPLIED, STATUTORY OR OTHERWISE INCLUDING (BUT NOT LIMITED TO) ANY WARRANTIES OF MERCHANTABILITY OR FITNESS FOR A PARTICULAR PURPOSE WITH RESPECT TO THESE PRODUCTS AND ANY RELATED SOFTWARE.

MANUFACTURER FURTHER DISCLAIMS ANY OTHER IMPLIED WARRANTY UNDER THE UNIFORM COMPUTER INFORMATION TRANSACTIONS ACT OR SIMILAR LAW AS ENACTED BY ANY STATE.




(USA only) SOME STATES DO NOT ALLOW THE EXCLUSION OF IMPLIED WARRANTIES, SO THE ABOVE EXCLUSION MAY NOT APPLY TO YOU.

THIS WARRANTY GIVES YOU SPECIFIC LEGAL RIGHTS AND YOU MAY ALSO HAVE OTHER LEGAL RIGHTS THAT VARY FROM STATE TO STATE. MANUFACTURER MAKES NO REPRESENTATION, WARRANTY, COVENANT OR PROMISE THAT ITS ALARM PRODUCTS AND/OR RELATED SOFTWARE (I) WILL NOT BE HACKED, COMPROMISED AND/OR CIRCUMVENTED; (II) WILL PREVENT, OR PROVIDE ADEQUATE WARNING OR PROTECTION FROM, BREAK-INS, BURGLARY, ROBBERY, FIRE; OR (III) WILL WORK PROPERLY IN ALL

Environmental class

UL: Indoor dry

IEC: 3K5

EU compliance	
EN 54	EN 54-00:0000
European Union directives	1999/5/EC (R&TTE directive): Hereby, Clare Controls declares that this device is in compliance with the essential requirements and other relevant provisions of Directive 1999/5/EC.
	2002/96/EC (WEEE directive): Products marked with this symbol cannot be disposed of as unsorted municipal waste in the European Union. For proper recycling, return this product to your local supplier upon the purchase of equivalent new equipment, or dispose of it at designated collection points. For more information see: www.recyclethis.info .
	2006/66/EC (battery directive): This product contains a battery that cannot be disposed of as unsorted municipal waste in the European Union. See the product documentation for specific battery information. The battery is marked with this symbol, which may include lettering to indicate cadmium (Cd), lead (Pb), or mercury (Hg). For proper recycling, return the battery to your supplier or to a designated collection point. For more information see: www.recyclethis.info .

Warranty information

Clare Controls offers a two (2) year limited warranty on original Clare Controls components, from the date of shipment from Clare Controls.

Contact information

Clare Controls, LLC.

7519 Pennsylvania Ave, Suite 104

Sarasota, FL 34243

General: 941.328.3991

Fax: 941.870.9646

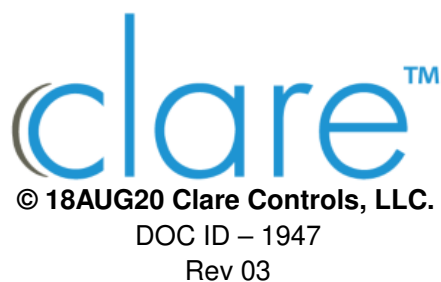
www.clarecontrols.com

Integrator/Dealer Support: 941.404.1072


claresupport@clarecontrols.com

Homeowner Support (ClareCare): 941.315.2273 (CARE)

help@clarecontrols.com



Documents / Resources

	<p>clare CLR-C1-ODDG ClareOne Outdoor Sensor [pdf] Installation Guide</p> <p>CLR-C1-ODDG ClareOne Outdoor Sensor, CLR-C1-ODDG, ClareOne Outdoor Sensor, Outdoor Sensor, Sensor</p>
---	--

References

-  [Clare Smart Home and Security](#)
-  [HOME](#)

Manuals+.