

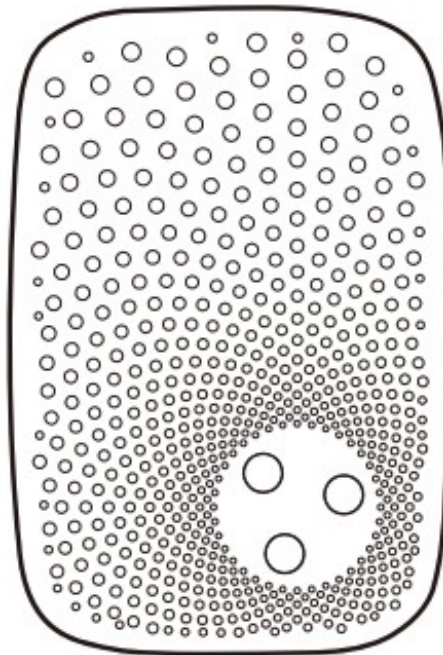


Clare Controls ClearOne Siren User Guide

[Home](#) » [Clare Controls](#) » Clare Controls ClearOne Siren User Guide

ClareOne Siren

ZW080

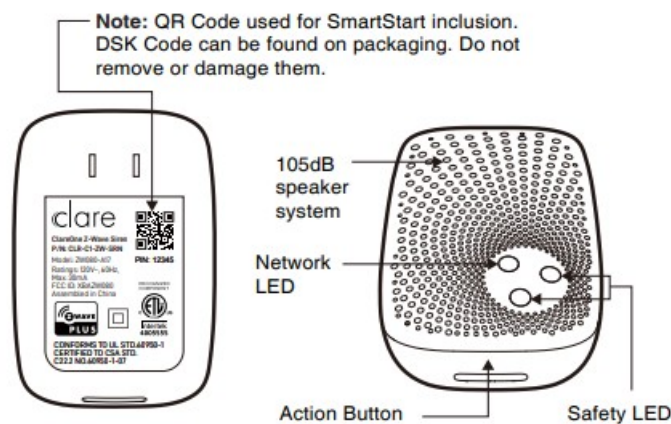


Contents [[hide](#)]

- 1 Clare Controles
- 2 Important safety information.
- 3 Get help & learn more.
- 4 Disposal guidelines and WEEE.
- 5 One-Year Limited Warranty.
- 6 FCC Notice.
- 7 RF Exposure Statement.
- 8 Declaration of Conformity.
- 9 Specifications.
- 10 Documents / Resources
 - 10.1 References
- 11 Related Posts

Clare Controles

Used in this guide.



Important safety information.

Please read this and the online guide(s) at <https://www.clarecontrols.com/helpcenter>. Failure to follow the recommendations set forth by Clare Controls may be dangerous or cause a violation of the law. The manufacturer, importer, distributor, and/or re-seller will not be held responsible for any loss or damage resulting from not following any instructions in this guide or in other materials.



Warning: To prevent possible hearing damage, test only when wearing appropriate hearing protection.

ClareOne Siren is intended for indoor use in dry locations only. Do not use in damp, moist, and/or wet locations.

Quick start.

The following will step you through installing the ClareOne Siren and connecting it to your ClareOne Z-Wave TM network.

1. Plug ClareOne Siren into a power outlet; its Network LED will slow flash.
2. To connect ClareOne Siren to your automation network;
 - a. If your Z-Wave gateway supports SmartStart, scan ClareOne Siren's QR Code using your gateway's app.

once scanned, ClareOne Siren will join your Z-Wave network automatically within 10 minutes.

- b. Else, set your gateway into its 'add device' mode. Refer to its manual if you are unsure of how to perform this step.
 - c. Then press ClareOne Siren's Action Button once; its Network LED will flash quickly to indicate pair mode.
 - d. If your gateway supports S2 security, and you want your device to use this higher level of security, please enter the first 5 digits of the DSK into the gateway interface when prompted. Refer to the gateway's manual if you are unsure how to perform this step. Do not lose the DSK or remove it from the product or package.
3. When ClareOne Siren successfully joins your Z-Wave network, its Network LED will become a solid ON state for a few seconds and then OFF. Should its Network LED still slow flash 3 times and then OFF, this indicates it was unable to join your Z-Wave network; repeat the above steps and please contact us for further support if needed.

ClareOne Siren is now a part of the ClareOne Z-Wave network.

You are able to test the ClareOne Siren's speaker system manually. **Safety:** Test only when wearing necessary ear protection. ClareOne Siren's speaker emits tones up to 105dB that can cause hearing damage. To test manually, press and hold Action Button for 5 seconds.

Get help & learn more.

Should you encounter any problem with the ClareOne Siren visit www.clarecontrols.com/helpcenter or contact our support team at claresupport@clarecontrols.com.

Manufactured for Clare Controls by Aeotec Limited (#704, Bright Way Tower, 33 Mong Kok Rd, Mong Kok, Hong Kong) contactable via aeotec.com/contact. The importer and/ or distributor of this device can both be reached separately with the company from whom you have purchased this device from responsible for warranty, technical support, and compliance-related queries.

Disposal guidelines and WEEE.

Clare Controls devices may contain batteries; remove when not in use. Do not dispose of devices as unsorted municipal waste, use separate collection facilities. Contact your local government for further information.

One-Year Limited Warranty.

Clare Controls warrants included Clare Controls branded hardware device when purchased new and delivered in new condition and in its original container against defects in materials and workmanship for one year from the date of original purchase from an authorized reseller when purchased and used in the region of original export. In line with the terms of sales between Clare Controls and the authorized importer/ reseller of this device, any claims against the foregoing warranty are to be handled by the authorized distributor/ reseller directly. The foregoing warranty is subject to the proper installation, operation, and maintenance of the device in accordance with installation instructions and the operating manual supplied to the customer and further documentation made available digitally. Liquid damage, including, but not limited to, internal liquid damage caused by improper use, closure, or affixing of the hardware, is not covered by this warranty. Splash, water, and dust resistance are not permanent conditions and resistance might decrease as a result of normal wear. Not warranted for damage from open flames and heat, and exposure to the sun. Not warranted for battery leak damage; always remove all batteries from products that not being used. Clare Controls does not warrant against normal wear and tear, nor damage caused by accident or abuse. Please be sure to read this device's support notes, digital materials, and quick start guide fully. Subject to the full terms of obtaining service within 30 days of the manifestation of a the problem, if you submit a valid claim under this warranty, Clare Controls shall provide further information in obtaining warranty services from the authorized importer and/or seller of this device.

FCC Notice.

The edition of this device made and certified for the US market and marked as such complies with part 15 of the FCC rules. Operation is subject to the following two conditions: (1) this device may not cause harmful interference, and (2) this device must accept any interference received, including interference that may cause undesired operation. The manufacturer is not responsible for any radio or TV interference caused by unauthorized modifications to this equipment. Such modifications could void the user's authority to operate the equipment. This equipment has been tested and found to comply with the limits for a Class B digital device, pursuant to part 15 of the FCC Rules. These limits are designed to provide reasonable protection against harmful interference in a residential installation. This equipment generates uses and can radiate radio frequency energy and, if not installed and used in accordance with the instructions, may cause harmful interference to radio communications. However, there is no guarantee that interference will not occur in a particular installation. If this equipment does cause harmful interference to radio or television reception, which can be determined by turning the equipment off and on, the user is encouraged to try to correct the interference by one or more of the following measures: (1) Reorient or relocate the receiving antenna. (2) Increase the separation between the equipment and receiver. (3) Connect the equipment into an outlet on a circuit different from that to which the receiver is connected. (4) Consult the dealer or an experienced radio/TV technician for help (5) Ensure this device and its antenna(s) are not be co-located or operating in conjunction with any other antenna or transmitter.

RF Exposure Statement.

The device has been evaluated to meet FCC/CE general RF exposure requirements. The device can be used without restriction

California Proposition 65.

WARNING: This product contains a chemical known o the State of California to cause birth defects or other reproductive harm. Use only for intended purposes. Do not use for other purposes including, but not limited to, the consumption of food and drinks

Declaration of Conformity.

Aeotec Limited declares that ClareOne Siren is in compliance with the essential requirements and other relevant provisions of RED 2014/53/EU, RoHS 2011/65/EU, IEC 62321:2008, EN 50581:2012 and ErP Directive 2009/125/EC, No 1275/2008 AMENDMENT 801/2013

Specifications.

Z-Wave devices operate between 868.40 & 926.3 MHz depending on local restrictions. It uses up to 1.15 dBm of transmit power, enabling long-range connectivity. Full information on device specifications and certifications at www.clarecontrols.com/helpcenter.




FCC ID: XBAZW080



Clare Controls

While the information in this guide has been compiled with care, it may not be deemed an assurance of device characteristics. All information, including, but not limited to, information regarding the functionality, features, and/or device specifications are subject to change. Clare Controls reserves all rights to revise or update its products or documentation without any obligation to notify any individual or entity. Clare Controls shall be liable only to the degree specified in the terms of sale and delivery.

Documents / Resources

	Clare Controls ClearOne Siren [pdf] User Guide ZW080 ClearOne Siren
---	--

References

-  [Help Center](#)
-  [Help Center](#)